

ANNUAL REPORT

1995-1996



KENTUCKY BOARD OF NURSING
312 Whittington Pky, Ste 300
Louisville, KY 40222-5172
(502) 329-7000

Board Members

Melda Sue Logan, RN
President
Jeff

Linda Thomas, RN
Vice President
Hanson

Sr. Margaret Ann Seasily, LPN
Secretary
Paducah

Diane Payne, Citizen-at-Large
Financial Officer
Lexington

Michael Carr, RN
Elizabethtown

Hazel Chappell, RN
Lexington

Linda DeVries, RN
Louisville

Debra Finneran, RN
Prospect

Nancy Kloha, ARNP
Ashland

Dorothy Thomas, LPN
Ashland

Sandra Thornton, LPN
Villa Hills

Marcia Stanhope, RN
Lexington

Anne Willis, RN
Louisville

Board Meetings

August 10-11, 1995
Regular Meeting

October 12-13, 1995
Regular Meeting

December 13 & 15, 1995
Regular Meeting

February 22-23, 1996
Regular Meeting

April 18-19, 1996
Regular Meeting

June 27-28, 1996
Annual Meeting

PREPARED BY STAFF
OF THE KENTUCKY BOARD OF NURSING

DESIGN & LAYOUT:
DARLENE CHILTON

COST OF PRINTING PAID FROM STATE FUNDS



KENTUCKY BOARD OF NURSING

312 Whittington Parkway, Suite 300
Louisville, Kentucky 40222-5172

PAUL E. PATTON
GOVERNOR

(502) 329-7000
(502) 329-7011 FAX

October 28, 1996

The Honorable Paul E. Patton
Office of the Governor
Commonwealth of Kentucky
State Capitol Building
Frankfort, KY 40601

Dear Governor Patton:

The Board and staff of the Kentucky Board of Nursing are pleased to submit the Annual Report for Fiscal Year 1995-96.

The following pages reflect the intense work of the Board during the past year. We are appreciative of the support and assistance provided by you and your staff, as we strive to assure that safe and effective nursing care is provided by nurses for the citizens of the Commonwealth.

Very sincerely yours,

LINDA J. THOMAS, MSN, RN
PRESIDENT

A handwritten signature in cursive script, reading "Sharon M. Weisenbeck", followed by a long horizontal flourish.

By: Sharon M. Weisenbeck, MS, RN
Executive Director

dc

KENTUCKY BOARD OF NURSING

	PAGE
Letter of Transmittal	1
Title Page	3
Table of Contents	5
Statement of Philosophy	7
Kentucky Administrative Regulations	9
Long Range Plan 1995-1999	11-12
Strategic Plan	13-18
Composition, Structures & Operations	
Board Activities	19
Organizational Charts	
Program	20
Staff	21
Councils/Committees/Panels	
Advisory Council	22
Advanced Registered Nurse Practice Council	22
Nursing Incentive Scholarship Fund Committee	22
Practice Committee	23
Education Committee	23
Study & Planning Committee	23
Credentials Review Panel	23
<i>Communique</i> ' Editorial Panel	23
Board Appointed Representatives	24
Financial Operations	25
Board Administrative Programs	
Continuing Education	27-30
Investigation & Disciplinary Action	31
Nursing Practice	32
Nursing Incentive Scholarship Fund	33
Prelicensure Programs of Nursing & NCLEX Pass Rates	34-36
Licensure & Registration	
Kentucky Nurse Licensees	37-40
ARNP Registrations	41-42
Licensure by Endorsement	43
Licensure Statistics FY 91-96	44-45

Table of Contents

Board of Nursing Statement of Philosophy

It is the philosophy of the Kentucky Board of Nursing that the regulation of the practice of nursing shall achieve public protection by ensuring the competency of licensees who provide nursing care. To that end, the regulation of nursing should be responsive to the changing health application of knowledge, skills, and behavior to meet those needs and priorities. As public protection is the essential role of the Board, the public should have a voice in the action taken to promote its protection.

Licensure establishes an essential level of competency, and indicates that nurses have a common core of knowledge. As such, the purpose of licensure is to set standards for practice and education of individuals in order to protect the public from dishonest and incompetent practitioners. These standards are established in the *Kentucky Nursing Laws* (Kentucky Revised Statutes Chapter 314) and its attendant administrative regulations. Nursing practice and behavior inconsistent with these standards should lead to disciplinary action.

Critical elements of the regulation of nursing practice include a coherent, generally acceptable definition of nursing, as well as definitions of professional scope and accountability. These definitions should make explicit that the nurse is responsible and accountable for the practice of nursing according to individual preparation and experience, with nursing auxiliaries assisting under prescribed conditions. Further, the licensed nurse is responsible and accountable for continued professional learning throughout her/his career continuum.

Essential components of the regulation of prelicensure nursing education include sufficient, qualified faculty and appropriate program curricula and clinical practice laboratories. The curricula should reflect the activities, functions, duties, and responsibilities of the practicing nurse. The clinical practice laboratories should allow prelicensure students opportunities to both generate new knowledge and demonstrate their practice abilities.

As the standards governing nursing practice, continuing education, and prelicensure education are established through the legislative process, the Board has a responsibility to maintain ongoing communication with the legislative branch of government. Concurrently, the complex and dynamic changes occurring in the health care delivery system require that effective communication be maintained with licensees and with local, state and national nursing organizations, health care providers and agencies, governmental units, and nursing education programs.

In summary, the Kentucky Board of Nursing believes that the protection of the public can best be accomplished through ensuring the competency of licensees who provide nursing care, and by establishing standards that allow for the fullest development of nursing practice, commensurate with its potential social contribution.

Adopted: August 1990

Kentucky Administrative Regulations are enacted to operationalize statutory language and carry force and effect of law. Several regulations were revised during FY 95-96 as indicated by the effective date. One new regulation was initiated by the Board and approved by the Legislative Research Commission.

<u>201 Kentucky Administrative Regulation 20:</u>		Effective Date
.056	Advanced Registered Nurse Practitioner Registration	8/94
.057	Scope & Standards of Practice of Advanced Registered Nurse Practitioners ...	9/95
.070	Licensure by Examination	86/96
.085	Licensure Periods	2/95
.090	Temporary Work Permit	3/94
.095	Inactive Nurse Licensure Status	2/93
.110	Licensure by Endorsement	2/93
.161	Investigation & Disposition of Complaints	8/93
.162	Procedures for Disciplinary Hearings Pursuant to KRS 314.091	9/95
.200	Definitions for Mandatory Continuing Education	7/92
.215	Contact Hours	3/96
.220	Provider Approval	7/92
.225	Reinstatement of License	2/93
.230	Renewal of Licenses	2/93
.235	The Prevention of Transmission of HIV & HBV by Nurses	9/93
.240	Fees for Applications & for Services	3/96
.250	Definitions for Registered & Practical Nurse Prelicensure Programs of Nursing ..	2/93
.260	Organization & Administration Standards for Prelicensure Programs of Nursing .	8/93
.270	Programs of Nursing Surveys	11/87
.280	Standards for Prelicensure Registered Nurse & Practical Nurse Programs	6/85
.290	Standards for Prelicensure Registered Nurse & Practical Nurse Extension Programs ...	11/87
.300	Standards for Prelicensure Experimental Programs of Nursing	6/85
.310	Faculty for Prelicensure Registered Nurse & Practical Nurse Programs	2/93
.320	Standards for Curriculum of Prelicensure Registered Nurse Programs	11/87
.330	Standards for Curriculum of Prelicensure Practical Nurse Programs	3/89
.340	Students in Prelicensure Registered Nurse & Practical Nurse Programs	6/85
.350	Education Facilities & Resources for Prelicensure Registered Nurse & Practical Nurse Programs	6/85
.360	Evaluation of Prelicensure Registered Nurse & Practical Nurse Programs	11/87
.370	Applications for Licensure & Registration	8/94
.380	Standards for Refresher Course Approval	11/87
.390	Nursing Incentive Scholarship Fund	9/94
.400	Delegation of Nursing Tasks to Unlicensed Persons	1/93
.410	Expungement of Records	9/95

Kentucky Administrative Regulations

MISSION

The mission of the Kentucky Board of Nursing is to enforce public policy related to the safe and effective practice of nursing in order to protect and safeguard the health and safety of the citizens of the Commonwealth of Kentucky. As a regulatory agency of state government, the Board accomplishes this mission by carrying out activities authorized by *Kentucky Revised Statutes* and administrative regulations, disseminating information to nurses and the public, and operating an agency which utilizes human and fiscal resources efficiently and effectively.

GOALS AND ASSUMPTIONS

GOAL I: *Ensure that persons licensed as nurses and registered as advanced registered nurse practitioners in Kentucky are qualified according to requirements to provide the citizens of the Commonwealth with safe and effective nursing care.*

ASSUMPTIONS:

1. Emphasis on determination of initial and continuing competency will continue.
2. Methods of competency determination, including the licensure examination, will continue to change.
3. Mandatory continuing education will continue to be a mechanism for competency validation.
4. Changes in educational requirements for licensure will occur.
5. Prelicensure educational programs will require an internship/preceptorship component.
6. Nursing curricula will change to reflect non-traditional delivery systems.
7. Scope of nursing practice will expand for licensees.
8. Registered nursing practice will expand to include current scopes of advanced nursing practice.
9. More practice complaints will be reported.
10. There will be an increased societal interest in the arena of infectious diseases and the associated risks for the public and health care providers.
11. The role of regulatory agencies will continue to be affected by national and international alliances.
12. Geopolitical events will direct new approaches for credentialing candidates for professional and occupational licensure.

GOAL II: *Optimize human and fiscal resources to improve services and control costs.*

ASSUMPTIONS:

1. Automation will continue to enhance Board operation.
2. Nurse manpower data will be valued and used.
3. An increase in fees to maintain current level of services will be needed.
4. Difficulty for nurses and consumers to serve on KBN relative to time, energy, and conflicts will continue to occur.
5. Changes in requirements for licensure will continue to have ramifications for Board composition.
6. The need for Board member education and staff development will increase.

LONG RANGE PLAN 1995-1999 (Continued)

GOAL III: *Assert leadership in state government and the public arena in the regulation of nurses, nursing education, and nursing practice to promote the delivery of safe and effective nursing services.*

ASSUMPTIONS:

1. Nursing manpower demands will continue to be cyclic and vary by work settings.
2. Qualified students will continue to select other professions other than nursing.
3. Efforts to restructure government will intensify the monitoring of KBN activities by other groups.
4. Questioning the value of regulation, licensure, and certification as currently known will increase.
5. Kentucky nurses will continue to be recognized for national contributions.
6. More nurses will be in independent practice and qualify for direct reimbursement.
7. The deinstitutionalization of health care delivery systems will continue to affect the utilization of nurses.
8. Increase in nonlicensed and/or cross-trained licensed persons performing nursing duties will continue.
9. Restructuring in health care organizations will affect the practice of nursing.
10. The current cost containment focus of health care reform will gradually shift to an emphasis on quality of care issues.
11. Accessibility of health care for citizens will continue to expand.
12. Corporate and government control of health care delivery systems will continue to expand.
13. The expansion of interdisciplinary approaches to health care delivery will impact and change the role and practice of nurse licensees.

Strategic Plan 1995-1999

GOAL I: *Ensure that persons licensed as nurses and those registered as advanced registered nurse practitioners in Kentucky are qualified according to requirements to provide the citizens of the Commonwealth with safe and effective nursing care.*

STRATEGIC GOALS (3-5 YRS)	STRATEGIC APPROACHES (1-3 YRS)	MAJOR ACTIVITIES 95-96
IA. Promote high quality prelicensure nursing education programs.	IA1. Promulgate administrative regulations for prelicensure programs of nursing (PONs) approval.	IA1. Researched need for regulatory language regarding applicants with criminal convictions.
	IA2. Examine prelicensure educational requirements for eligibility for licensure as a nurse.	IA2. Researched testing patterns following 4/94 implementation of computer adaptive licensure examination. Reviewed need for temporary work permit for new graduates.
	IA3. Assist prelicensure PON education for compliance with status and administrative regulations.	IA3. Conducted 7 PON surveys. Provided consultation to 3 PONs. Required special compliance reports from PONs.
IB. Promote high quality mandatory continuing education (CE) for nurses.	IB1. Promulgate administrative regulations for mandatory CE for nurses.	IB1. Revised 201 KAR 20:215, 240. Domestic Violence Intervention CE requirements enacted by 1996 General Assembly.
	IB2. Determine comparability of standards of other organizations with those of the Board administrative regulations for mandatory CE.	IB2. No new organizations requested recognition. Approved 32 individual reviews of CE offerings. Examined speciality certification requirements for comparability to CE standards.
	IB3. Assist approved providers for compliance with statutes and administrative regulations for mandatory CE.	IB3. Approved approximately 85 CE provider renewals for Category 1, 2, 3, 5, 6 and 7.
IC. Determine competency of applicants for licensure and registration.	IC1. Investigate methods for determining competence of applicants/licensees/registrants.	IC1. Researched alternative competency evaluation methodologies. Established Competency Task Force.
	IC2. Audit licensees for compliance with CE (including AIDS education) requirements for renewal of licensure.	IC2. Randomly audited LPN population renewing on active status by 10/31/95 with a 92% compliance rate. Reported 97% compliance rate with AIDS CE requirements to Cabinet for Health Services.
	IC3. Monitor impact of national and international law agreements affecting professional licensure.	IC3. Reviewed potential impact of NAFTA on nurse licensure in Kentucky.
	IC4. Maintain sound regulatory requirements for licensure and registration.	IC4. Revised 201 KAR 20:070 and the "Guidelines for Staff Evaluating of High School Equivalency."

STRATEGIC GOALS (3-5 YRS)	STRATEGIC APPROACHES (1-3 YRS)	MAJOR ACTIVITIES 95-96
ID. Enforce mandatory licensure/registration of individuals practicing as nurses.	<p>ID1. Examine mechanisms for monitoring licensure/registration status.</p> <p>ID2. Cooperate with employers, regulatory and other official agencies regarding licensure/registration of nurses.</p> <p>ID3. Assist nurses for compliance with licensure/registration requirements.</p>	<p>ID1. Reaffirmed CNATS Comparability to NCLEX-RN.</p> <p>ID2. Determined that CGFNS Credentials Evaluation Service be used for international applicants for LPN licensure.</p> <p>ID3. Approved that the CGFNS Credentials Evaluation Service be utilized for evaluation of LPN educational programs.</p> <p>Approved that the Canadian Nurse Registration Licensure Examination continue to be accepted for RN licensure.</p> <p>Received information on the release of licensee's mailing addresses under the Open Records Law, and <i>Zink v. Commonwealth</i>, and directed that the <i>Communique</i> provide information that the Board will continue to release the mailing addresses of licensees.</p> <p>Recommended that NCLEX candidates who fail the licensure examination be permitted to review and challenge the test in accordance with the NCSBN procedures.</p> <p>Processed 1,347 applicants for endorsement; 2,704 for initial licensure by examination; and 13,004 LPN renewal applications.</p>
IE. Enhance disciplinary action program to safeguard the public and to ensure due process rights of applicants/licensees/registrants.	<p>IE1. Examine statutes and administrative regulations regarding investigation and disciplinary activities.</p> <p>IE2. Promulgate administrative regulations for disciplinary action programs.</p> <p>IE3. Maintain a sound investigation and disciplinary action program.</p>	<p>IE1. Disseminated disciplinary data to advanced practice certifying agencies as requested.</p> <p>Contributed to NC Disciplinary Data Bank.</p> <p>Completed study on applicants with conviction records.</p> <p>Passed legislation for Peer Assistance Program for Kentucky nurses.</p> <p>IE2. Completed disciplinary action research study.</p> <p>IE3. Directed Credentials Review Panel address problems facing a number of licensees with probated licenses who are required to be employed in a nursing position during the period of probation.</p> <p>Approved the "Guidelines for Review of Criminal Convictions and Disciplinary Actions from Other Jurisdictions."</p> <p>Conducted 170 investigative meetings in response to 478 complaints, 287 probationary meetings, 67 disciplinary hearings.</p> <p>Processed 85 Consent Decrees, 88 Agreed Orders, and 57 Decisions.</p> <p>Budgeted for field nursing investigator positions.</p>

GOAL II: Optimize human and fiscal resources to improve services and control costs.

STRATEGIC GOALS (3-5 yrs)	STRATEGIC APPROACHES (1-3 yrs)	MAJOR ACTIVITIES 95-96
IIA. Ensure optimal development of human resources.	IIA1. Examine organization of Board agency and operation.	IIA1. Conducted strategic planning workshops for all Board members and staff. Revised Credentials Review Panel "Scope, Functions and Membership" statement. Received information on the results of an Advisory Council Member Survey. Implemented staff development master plan. Acted on report of work environment assessment. Established standing committee on Consumer Protection.
	IIA2. Provide orientation and development program for members of the Board, councils and committees.	IIA2. Held 2 orientation sessions and conducted 5 general discussion sessions with Board and staff.
	IIA3. Provide orientation and development program for staff.	IIA3. Recruited staff to attend GSC classes. Conducted team building and strategic planning workshops for all staff. Implemented staff development plans.
	IIA4. Maintain compliance with state affirmative action plan.	IIA4. Goals exceeded; ongoing implementation.
	IIA5. Maintain effective staffing plan.	IIA5. Began with assessment and analysis as basis for future staff reorganization.
	IIA6. Maintain recognition program for service as KBN representative, volunteer committee and council, staff and Board members.	IIA6. Recognized 4 staff, 3 Board members, 8 Advisory Council members, and 8 committee volunteers. Approved that group pictures and shirts with KBN logo be made available.
IIB. Provide for fiscal soundness and stability of agency.	IIB1. Maintain fiscal soundness and stability.	IIB1. Developed/adopted 96-98 Biennial Budget. Approved the "Expenditure Ceiling Guidelines."
	IIB2. Monitor fiscal effectiveness of agency operation.	IIB2. Monitored and adjusted 94-96 Biennial Budget. Reviewed 5-year metro and propective plans.
	IIB3. Update administrative regulation on fees.	IIB3. Revised 201 KAR:240 and 250.
IIC. Provide facilities to enhance the Board and agency operation.	IIC1. Examine environmental needs for Board and agency operation.	IIC1. Installed office security system. Expanded office space.
	IIC2. Maintain comprehensive plan for office automation.	IIC2. Completed the agency's 96-98 Information Resources Plan (IRP).
	IIC3. Examine effectiveness of master plan for office automation.	IIC3. Continued evaluation of ongoing services and assessment of new hardware/software.

STRATEGIC GOALS (3-5 YRS)	STRATEGIC APPROACHES (1-3 YRS)	MAJOR ACTIVITIES 95-96
IID. Maximize effectiveness of operational systems for implementing statutory mandates.	IID1. Maintain sound recordkeeping system.	IID1. Reviewed all applications and processes as part of work assessment process.
	IID2. Maintain sound and flexible operational systems for implementing policy.	IID2. Ongoing evaluation of operational systems. Planning initiated for converting computer software to support agency functions.
IIE. Maintain planning processes for agency effectiveness.	IIE1. Utilize established planning process for agency.	IIE1. Adopted revised KBN Strategic Plan. Developed Mission and Vision Statements.
	IIE2. Evaluate effectiveness of total agency operation.	IIE2. Published and submitted 94-95 KBN Annual Report to Office of Governor.

GOAL III: *Assert leadership in state government and the public arena in the regulation of nurses, nursing education, and nursing practice to promote the delivery of safe and effective nursing services.*

STRATEGIC GOALS (3-5 YRS)	STRATEGIC APPROACHES (1-3 YRS)	MAJOR ACTIVITIES 95-96
IIIA. Support sound legislation for the regulation of nurses, nursing education and nursing practice.	IIIA1. Study provisions of <i>Kentucky Nursing Laws</i> and related statutes for the purpose of needed revisions.	IIIA1. Statutory changes passed by 1996 General Assembly. Reviewed KRS 314 for potential regulatory changes. Directed changes to ARNP Council composition.
	IIIA2. Plan strategy for passage of statutory changes as needed.	IIIA2. Worked with various organizations to support enactment of revisions of KRS 314. Adopted revisions to 201 KAR 20:057. SANE program legislation passed.
	IIIA3. Monitor regulatory proposals and enactments.	IIIA3. Tracked bills introduced in 1996 General Assembly related to nursing and health care. Revised 201 KAR 20:040, 215, 070 and 390.
IIIB. Participate as a Member Board of the National Council of State Boards of Nursing (NCSBN).	IIIB1. Participate in activities to fulfill membership responsibilities and as requested by NCSBN.	IIIB1. Attended meetings and responded to all requests.
	IIIB2. Promote involvement of volunteers and selected individuals for the various offices, committees and work groups of NCSBN.	IIIB2. 5 KBN representatives served on NCSBN committees, panels, etc.
	IIIB3. Provide representation for NCSBN meetings and assemblies.	IIIB3. 2 delegates attended Area III meeting and annual meeting of Delegate Assembly.
IIIC. Promote integrity of legal scope of nursing practice.	IIIC1. Maintain currency on issues involving the legal scope of nursing practice.	IIIC1. Reaffirmed 3 advisory opinion statements: #84-05 "Performance of Advanced Life Support Procedures by RNs," #84-06 "Performance of Arterial Puncture by RNs," and #93-29 "Cardiopulmonary/Respiratory Nursing Practice."

STRATEGIC GOALS (3-5 YRS)	STRATEGIC APPROACHES (1-3 YRS)	MAJOR ACTIVITIES 95-96
IIID. Cooperate with individuals, groups and organizations to address nursing issues and concerns.	IIIC2. Interpret legal scope of nursing practice.	<p>Responded to Kentucky Board of Respiratory Care memorandum entitled "Opinion Statements on Persons Qualified to Perform Respiratory Care Tasks."</p> <p>IIIC2. Reviewed, developed or updated 7 formal advisory opinion statements.</p> <p>Issued 9 opinions on nursing practice issues.</p> <p>Appointed Competency Task Force to debate and discuss entry and continuing competency issues.</p>
	IIIC3. Promulgate administrative regulations on nursing practice as needed.	IIIC3. Revised 201 KAR 20:057, Scope and standards of practice of ARNPs.
	IIID1. Enhance communication strategies with appropriate individuals and groups.	<p>IIID1. Held ARNP Discussion Forum.</p> <p>Held meetings with executive directors and presidents of health care regulatory boards to discuss concerns/issues of mutual interest and integration of regulatory systems.</p> <p>Offered to participate in a proposed nursing summit, to be tentatively hosted by the Kentucky Nurses Association in spring 96, and that support be offered to KNA and KSALPN in hosting future nursing summits.</p>
	IIID2. Support programs for impaired nurses.	IIID2. Considered initial proposals for contractual agreements with the Ky Peer Assistance Program.
	IIID3. Support research relevant to the regulation of nurses, nursing education and nursing practice.	<p>IIID3. Convened Competency Task Force.</p> <p>Conducted Disciplinary Action Research Project and a Nursing Management Educational Needs Survey.</p> <p>Supported the Robert Wood Johnson Foundation Proposal submitted by KNA, and participation in a proposed Kentucky Nursing Care Consortium.</p> <p>Approved research proposal to examine recidivism among violators of <i>Kentucky Nursing Laws</i>.</p>
	IIID4. Develop innovative services for the promotion of public protection.	IIID4. Planned for fax back verification.
	IIID5. Increase the public and affected parties' understanding of the regulation of nursing and the contribution of nursing to society.	<p>IIID5. Completed 32 surveys related to CE, prelicensure nursing education, and nursing practice.</p> <p>Approved that a nurse managers/administrators educational program be offered in 1997 in lieu of a Board conference.</p> <p>Implemented 2 informal Board discussion sessions.</p> <p>Held 1996 Annual Conference and 2 Open Forums.</p>

STRATEGIC GOALS (3-5 YRS)	STRATEGIC APPROACHES (1-3 YRS)	MAJOR ACTIVITIES 95-96
III E. Disseminate information on the regulation of nurses and advanced registered nurse practitioners, and nursing education and practice.	<p>III E1. Evaluate information needed by applicants/ licensees/registrants/ approved entities for compliance with regulations.</p> <p>III E2. Continue enhancements to communication strategies with individuals and entities affected by regulation.</p>	<p>III E1. Sent 199 CE updates to providers; published CE compliance information in <i>Communique</i>. Revised <i>CE Brochure</i> 1996.</p> <p>III E2. Published 3 issues of <i>Communique</i>.</p>
III F. Establish a comprehensive data system on prelicensure and licensure populations.	<p>III F1. Maintain a sound and flexible system for collection and retrieval of data.</p> <p>III F2. Cooperate with individuals and local/state/national organizations and agencies involved in data collection and research.</p>	<p>III F1. Maintained AIDS CE compliance database.</p> <p>III F2. Cooperated with multiple groups seeking research populations.</p>
III G. Participate in activities aimed at sound health care reforms.	<p>III G1. Examine proposals on health care reform.</p> <p>III G2. Provide data as needed to requesting parties.</p> <p>III G3. Provide representation as needed/requested.</p>	<p>III G1. Monitored 1996 legislative activity. Participated on Health Policy Board committees.</p> <p>III G2. Supplied 89 requests for demographic and licensure data.</p> <p>III G3. Provided speakers to multiple groups as requested.</p>

Board Activities

OVERVIEW

All meetings of the Board and its committees and councils were held in open session as required by the open meetings law.

The commitment of the members of the Board and the dedication of its staff continued in unabated fashion. Appreciation for this service by Board staff and members was expressed through the recognition programs of the agency and executive branch of state government.

Retiring Board members Melda Sue Logan, RN; Hazel Chappell, RN; and Sandra Thornton, LPN, were honored and thanked for their substantial contributions to the Board.

Grace Scott, Credentials Branch Manager, was recognized for 15 years of service with the Board of Nursing. Darlene Chilton, NISF Program Coordinator, and Maria Wheat, Executive Secretary, were recognized for 10 years of service. Lisa Jeffries, Examination Specialist, was recognized for 5 years of service. The following staff were recipients of the Employee Excellence Award: Connie Lusher, Nurse Investigator, and Mary Booth, Accountant.

COMMITTEE MEETINGS

1995

Sep 14 Education/Practice Cmtes
 Sep 15 Study & Planning Cmte
 Nov 15 Practice Cmte
 Nov 16 Education/Study & Planning Cmtes

1996

Jan 17 Practice Cmte
 Jan 18 Education/Study & Planning Cmtes
 Mar 13 Practice Cmte
 Mar 14 Education/Study & Planning Cmtes
 May 16 Education/Practice Cmtes
 May 17 Study & Planning Cmte

BOARD OFFICERS

Elected June 1996

President: Linda Thomas
Vice President: Marcia Stanhope
Secretary: Sr. Margaret Ann Seasley
Financial Officer: Linda DeVries

Immediate Past

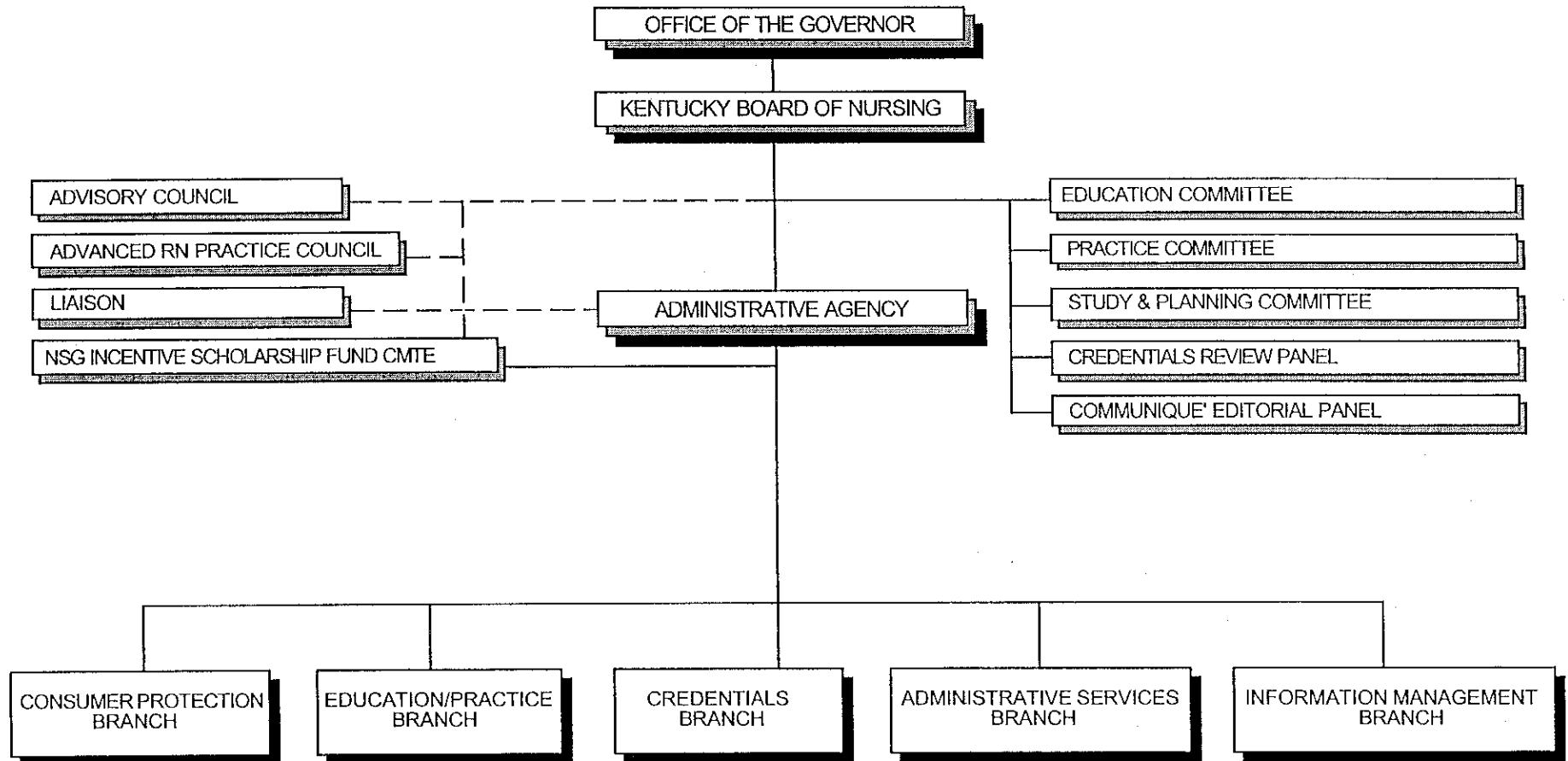
Melda Sue Logan
 Linda Thomas
 Sr. Margaret Ann Seasley
 Diane Payne

Past

Patricia Burge
 Melda Sue Logan
 Sandra Thornton
 Kathleen Bellinger

REGULATION OF NURSES AND NURSING EDUCATION AND PRACTICE

ORGANIZATION CHART (PROGRAM)



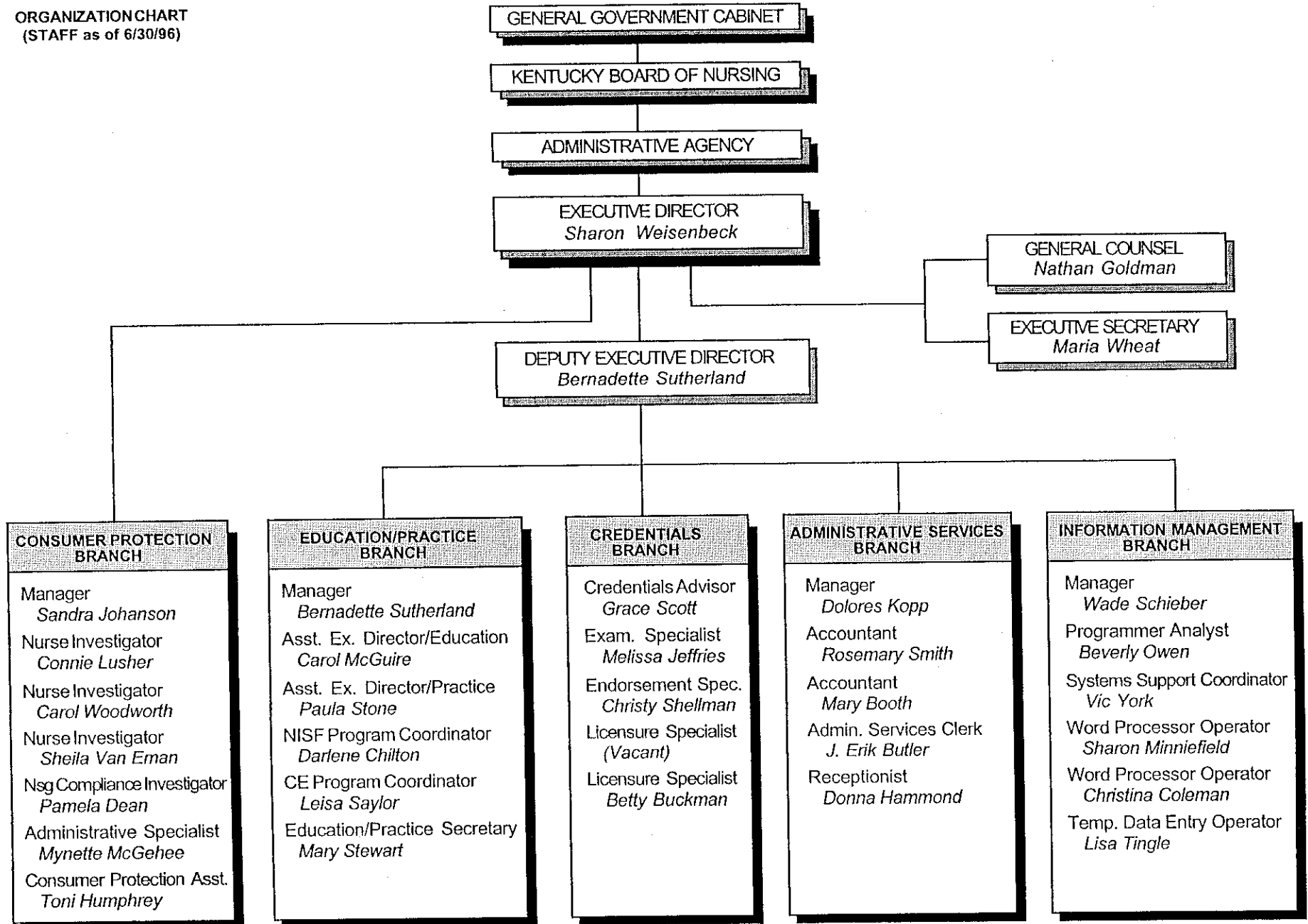
STATE GOVERNMENT STRUCTURE:

Cabinet
Department
Division
Branch
Section
Unit

Legend: _____ Direct Relationship
 - - - - - Advisory Relationship

(Board of Nursing is placed under the General Government Cabinet)

ORGANIZATION CHART
(STAFF as of 6/30/96)



Councils/Committees/Panels

ADVISORY COUNCIL

<u>Membership</u>	<u>Organization</u>
Laura Stone, RPh	Kentucky Pharmacy Association
M. Susan Jones, RN	Kentucky Nurses Association
William K. Massie, MD	Kentucky Hospital Association
Elizabeth A. Fultz, LPN	Kentucky State Association of Licensed Practical Nurses
William B. Monnig, MD	Kentucky Medical Association
Brenda Williams, RN	Kentucky Association of Health Care Facilities
Ben E. Baldwin, DMD	Kentucky Dental Association
Nancy M. Thomas, RN	Kentucky Association of Not-for-Profit Homes & Services for the Aging

The Governor appoints an **Advisory Council** to the board from nominees submitted by health related organizations. The council functions in an advisory capacity only as a constructive force in establishing and maintaining standards of nurse competency and licensure regulations in the interest of public protection.

Related organizations nominate representatives for membership on the **Advanced Registered Nurse Practice Council**, as an advisory body to the Board of Nursing. The council advises and recommends practice standards regarding the performance of acts relative to nurse anesthesia, nurse-midwifery, nurse practitioner and clinical nurse specialist practice.

ADVANCED REGISTERED NURSE PRACTICE COUNCIL

<u>Membership</u>	<u>Designation/Organization</u>
Brenda Farmer, ARNP	Advanced Registered Nurse Practitioner - Anesthetist
Sheila Ward, ARNP	Advanced Registered Nurse Practitioner - Midwife
Roberta Garfield, ARNP	Advanced Registered Nurse Practitioner - Practitioner
Debra Finneran, RN	Kentucky Board of Nursing
Nancy Khola, ARNP	Kentucky Board of Nursing
Preston P. Nunnolley, MD	Kentucky Board of Medical Licensure
Ed Ashcraft/Suvas Desai, MD	Kentucky Board of Medical Licensure
Ralph E. Bouvette, RPh	Kentucky Board of Pharmacy
Larry Fields, MD	Kentucky Medical Association
Sally Baxter, RN	Kentucky Association of Health Care Facilities
Teresa Mingea, RN	Kentucky Hospital Association

NURSING INCENTIVE SCHOLARSHIP FUND COMMITTEE

<u>Membership</u>	<u>Designation/Organization</u>
Marcia Stanhope, RN	Kentucky Board of Nursing
Marjorie Perrin, RN	Registered Nurses
Janice Oster, LPN	Licensed Practical Nurses
Ellen Bailey, ARNP	Kentucky Primary Care Association
W. David MacCool	Kentucky Hospital Association
Carolyn Kottak, RN	Kentucky Association of Health Care Facilities

The **Nursing Incentive Scholarship Fund (NISF)** was created in 1990 to increase the number of licensed nurses in medically underserved areas of the state and to decrease the number of vacant licensed nurse positions in all service sectors. The enabling statutory language was revised in 1994 to include registered nurses pursuing a graduate degree.

PRACTICE COMMITTEE

Anne Willis, RN, Chairperson
Michael Carr, RN
Hazel Chappell, RN
Dorothy Thomas, LPN
Nancy Kloha, ARNP
Debbie Drake, RN, RN Educator
Sue Ann Gariand, RN, LPN Educator
Geneva Coldiron, LPN, KSALPN Representative
Debora Price, RN, KNA Representative

The **Practice Committee** considers those matters related to the interpretation of the legal scope of nursing practice as defined in *Kentucky Revised Statutes* Chapter 314 and Board of Nursing administrative regulations. Committee deliberations may include review of other relevant statutes and regulations as necessary.

The **Education Committee** considers those matters related to mandatory continuing education and prelicensure nursing education in the Commonwealth. An additional membership category was added so that all levels of prelicensure nursing education are now represented on one committee.

EDUCATION COMMITTEE

Marcia Stanhope, RN, Chairperson
Linda Thomas, RN
Linda DeVries, RN
Sr. Margaret Ann Seasley, LPN
Mary Kleber, RN, LPN Prelicensure Education
Donna Combs, RN, ADN Prelicensure Education
Kay Robinson, RN, BSN Prelicensure Education
Carol Dickey, RN, LPN Continuing Education
Judy Bradley, RN, RN Continuing Education

STUDY & PLANNING COMMITTEE

Linda Thomas, RN, Chairperson
Marcia Stanhope, RN
Debra Finneran, RN
Sandra Thornton, LPN
Diane Payne, Citizen-at-Large
Anne Willis, RN
Sr. Margaret Ann Seasley, LPN, Alternate

The **Study and Planning Committee** considers those matters related to the needs of the Board and its operation for enhancement of monitoring statutory and regulatory compliance and in planning for the predictable future.

The **Credentials Review Panel** considers those matters related to licensure and registration credentials and disciplinary investigation and action not otherwise covered by guidelines set by the Board of Nursing and applicable laws.

CREDENTIALS REVIEW PANEL

Melda Sue Logan, RN, Chairperson
Diane Payne, Citizen-at-Large

COMMUNIQUE' EDITORIAL PANEL

Hazel Chappell, RN, Chairperson
Diane Payne, Citizen-at-Large
Sandra Thornton, LPN

The **Communique' Editorial Panel** considers those matters related to planning for the preparation and publication of the official Board of Nursing newsletter, which is published 3 times annually (fall, winter, and spring).

Board Appointed Representatives

CABINET FOR HUMAN RESOURCES

Ky Board of Family Health Care Providers
Annette Castle

COUNCIL ON LICENSURE ENFORCEMENT & REGULATION

Regulatory Issues Task Force
Nathan Goldman

EMERGENCY MEDICAL SERVICES ADVISORY COUNCIL

Marcia Stanhope
Paula Stone

GOVERNOR'S COALITION

Kentuckians for Health Care Reform
Sharon Weisenbeck

JEFFERSON COUNTY NURSE DAY

Recognition Committee
Sharon Weisenbeck

KENTUCKY BOARD OF MEDICAL LICENSURE

Physician Assistant Advisory Council
Ellen Bailey

KENTUCKY COUNCIL OF BACCALAUREATE & HIGHER DEGREE PROGRAMS

Marcia Stanhope
Carol McGuire

KENTUCKY COUNCIL OF ASSOCIATE DEGREE NURSING

Linda Thomas
Carol McGuire

KENTUCKY COUNCIL OF PRACTICAL NURSING

Carol McGuire

KENTUCKY NURSES ASSOCIATION

Board of Directors
Melda Sue Logan

Cabinet on Nursing Practice

Anne Willis
Paula Stone

Nurse Day Committee

Hazel Chappell
Sheila Van Eman

Nursing Education & Research Cabinet

Carol McGuire

KENTUCKY NURSING CONTINUING EDUCATION NETWORK

Michael Carr

KENTUCKY STATE ASSOCIATION OF LICENSED PRACTICAL NURSES

Sandra Thornton

NATIONAL COUNCIL OF STATE BOARDS OF NURSING

Delegate Representatives
Melda Sue Logan
Sharon Weisenbeck

Alternate Delegate Representatives

Linda Thomas
Paula Stone

Examination Committee

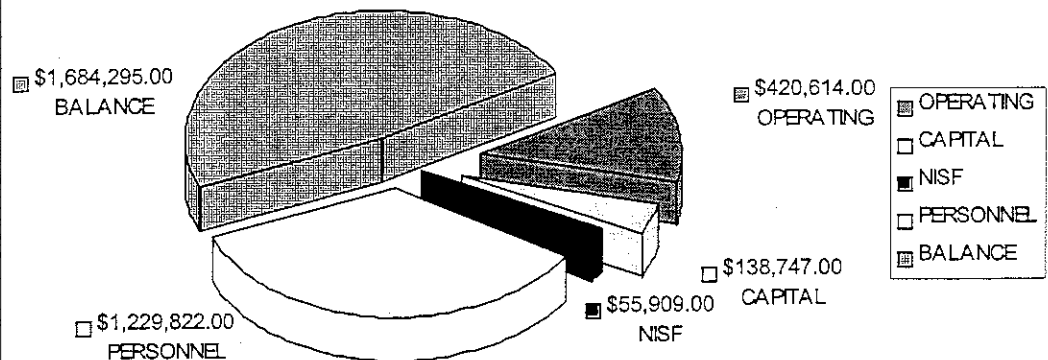
Carol McGuire

Long Range Planning Task Force

Sharon Weisenbeck

Financial Report

FY 95-96: TOTAL OPERATING FUND = \$3,529,387



The Kentucky Board of Nursing is a fee supported agency. No general revenue tax dollars are expended by the agency. The operating fund for FY 95-96 was \$3,529,387 with expenditures totaling \$1,845,092. The FY 95-96 Financial Report and Fee Schedule are illustrated.

Various Board of Nursing publications and informational material were offered for a nominal fee that covered duplicating costs. Some of the publications available for purchase were the KBN History, *Kentucky Nursing Laws*, KBN Administrative Regulations, KBN Advisory Opinion Statements, and Disciplinary Process and Procedures for Nursing Licensure. A free brochure on continuing education was also available.

FEE SCHEDULE

Licensure/Registration Application Fees

	RN	LPN
Endorsement	\$70	\$70
Reinstatement	70	70
Active License Renewal *	50	50
Inactive License Renewal *	40	40
Examination		
Licensure	70	70
Retake	30	30
ARNP Registration	70	
ARNP Reinstatement	70	
ARNP Renewal *	45	
Duplicate License Letter	20	20
Verification to Other States	20	20

Continuing Education Approval Fees

Initial Provider Approval	\$100
Reinstatement of Provider Approval	100
Renewal of Provider Approval *	50
Offering Approval Via Staff Review	10

* Issued for a two-year period

Continuing Education

As a mechanism to promote continuing competency, the *Kentucky Nursing Laws* (KRS 314.073) mandate that licensees earn a minimum of 30 hours of approved nursing continuing education, including at least 2 hours of Kentucky Cabinet for Human Resources (CHR) approved AIDS education (KRS 214.610). The Kentucky Board of Nursing is the Commonwealth agency legally authorized to approve providers of mandatory continuing education.

The post-renewal audit process is used to verify earning of the required 30 contact hours including the 2 hours of CHR approved AIDS education. The random audit requires that those persons selected show documented evidence (certificate of attendance, transcript, grade report, etc.) of approved contact hour earning during the applicable licensure period. Of those licensees randomly selected for the audit process, 99% demonstrated compliance with the CE requirements. Those not complying were referred for disciplinary action.

Board Administrative Programs

APPROVED PROVIDERS OF MANDATORY CONTINUING EDUCATION 1995-96

CALIFORNIA:

ROSEVILLE National Center of Continuing Education (916) 786-4626

ILLINOIS:

CHICAGO American Association of Neuroscience Nurses (612) 863-5306
PARK RIDGE American Association of Nurse Anesthetists (708) 692-7050

INDIANA:

JEFFERSONVILLE Clark Memorial Hospital (812) 283-2079
NEW ALBANY Center for Counseling & Wellness (812) 949-9241
Floyd Memorial Hospital & Health Services (812) 944-7701

KENTUCKY:

ASHLAND Ashland Community College (606) 329-2999 x 316
Community Hospice (606) 329-1890
King's Daughters' Medical Center (606) 327-4000
Our Lady of Bellefonte Hospital (606) 833-3550
BARBOURVILLE Knox County Hospital (606) 546-4175
BENTON Marshall County Hospital (502) 527-4840
BEREA Berea College Dept of Nursing (606) 986-9341 x 5380
Berea Hospital Inc (606) 986-6592
BOWLING GREEN Columbia Greenview Regional Hospital (502) 793-5180
The Commonwealth Health Corp-The Medical Ctr (502) 745-1000
Mediplex Rehab-Bowling Green (502) 782-6900
South Central Kentucky AHEC (502) 745-3325
Western Kentucky University (502) 745-3391
BRONSTON Health Info Dispersment Systems (606) 561-5514
BURKESVILLE Cumberland County Hospital (502) 864-2511
CAMPBELLSVILLE Taylor County Hospital (502) 465-3561
COLUMBIA Westlake Cumberland Hospital (502) 384-4753
CORBIN Baptist Regional Medical Center (606) 528-1212
Health Directions Inc (606) 523-8488
COVINGTON St. Charles Care Center (606) 331-3224
CUMBERLAND Southeast Community College (606) 589-2145

CYNTHIANA	Harrison Memorial Hospital	(606) 234-2300
	Wedco District Health Department	(606) 234-8750
DANVILLE	Danville School of Practical Nursing	(606) 236-6030
	Ephraim McDowell Regional Medical Center	(606) 236-4121
EDGEWOOD	Healthsouth Northern Ky Rehabilitation Hospital	(606) 341-2044
	St. Elizabeth Medical Center	(606) 344-2449
ELIZABETHTOWN	Elizabethtown Community College	(502) 769-2371
	Hardin County Memorial Hospital	(502) 765-1249
	Lakeview Rehabilitation Hospital	(502) 769-3100
	Surgical Center of Elizabethtown	(502) 737-5200
FLEMINGSBURG	Fleming County Hospital	(606) 849-2351
FLORENCE	The St. Luke Hospitals	(606) 525-4204
FORT MITCHELL	American Cancer Society, Northern Ky Division	(606) 331-8887
FRANKFORT	Bluegrass Regional Medical Center	(502) 875-5240 x 181
	Division of Maternal & Child Health	(502) 564-3236
	Kentucky State University	(502) 227-5957
FRANKLIN	Franklin Simpson Memorial Hospital	(502) 586-3253
GEORGETOWN	Scott General Hospital	(502) 868-1100
GLASGOW	Glasgow School for Health Occupations	(502) 651-5673
	Nursing CE Associates	(800) 645-0742
	T.J. Samson Community Hospital	(502) 651-4444
HARLAN	Harlan Appalachian Regional Hospital	(606) 573-8100 x 660
HARTFORD	APIC - West Kentucky	(502) 298-7411
	Ohio County Hospital	(502) 298-7411
HAZARD	ARH Division of Home Services	(606) 439-6751
	Hazard Community College	(606) 436-5721
	Southeast Kentucky Area Health Education Center	(606) 439-6791
HEBRON	Pharmicare IV Services	(800) 733-0166
HENDERSON	Community Methodist Hospital	(502) 827-7197
	Henderson Community College	(502) 827-1867
	UPC Health Network	(800) 426-8708
HOPKINSVILLE	Continuing Education Network Inc	(502) 887-9315
	Hopkinsville Community College	(502) 886-3921 x 201
	Jennie Stuart Medical Center	(502) 887-0120
	Western State Hospital	(502) 886-4431
JACKSON	Lees College	(606) 666-7521
JEFFERSONTOWN	NAON, River Cities Chapter	(502) 562-3385
JENKINS	Jenkins Community Hospital	(606) 832-2171
LAGRANGE	Tri-County Baptist Hospital	(502) 222-5388
LEBANON	Columbia Spring View Hospital	(502) 692-3161
LEITCHFIELD	Twin Lakes Regional Medical Center	(502) 259-9400
LEXINGTON	4208th United States Army Hospital (USAH)	(606) 221-6348
	Bluegrass AORN	(606) 257-5766
	Cardinal Hill Rehab Hospital	(606) 254-5701
	Central Baptist Hospital	(606) 275-6405
	Charter Ridge Behavioral Health System	(606) 269-2325
	Dialysis Clinic Inc	(606) 252-7712
	Eastern State Hospital	(606) 246-7000
	Federal Medical Center	(606) 255-6812 x 329
	Humana Hospital - Lexington	(606) 268-3747
	Kentucky Home Health Association	(606) 268-2574
	Kentucky Tech - Central Campus	(606) 255-8501
	Ky Coalition of Nurse Practitioners/Nurse Midwives	(606) 271-0942
	Lexington Clinic	(606) 258-4000 x 4616
	Lexington Community College	(606) 257-5484 or 2624
	Lexington-Fayette County Health Dept	(606) 288-2323
	Saint Joseph Hospital	(606) 278-3436 x 2187
	Samaritan Medical Center	(606) 252-6612 x 8665
	Shriners Hospital for Crippled Children	(606) 266-2101
	Society of Head & Neck Nurses	(606) 257-5407
	UK College of Nursing	(606) 323-5237
	UK - University Hospital Dept of Nursing	(606) 323-5545
	VAMC Nursing Service	(606) 233-4511 x 4482
LONDON	Cumberland Valley District Health Dept	(606) 864-4764
	Marymount Medical Center	(606) 878-6520 x 532
LOUISA	Three Rivers Medical Center	(606) 638-9451 x 548

LOUISVILLE	American Association of Critical Care Nurses	(502) 228-1810
	Advanced Nursing Services of Kentucky	(502) 933-1279
	American Heart Association, KY Affiliate	(502) 587-8641
	American Red Cross, Louisville Area Chapter	(502) 589-4450 x 413
	Anthem Blue Cross Blue Shield	(502) 423-6455
	AWHONN, Kentucky Section	(502) 363-2892
	Baptist Hospital East	(502) 897-8826
	Bellarmine College	(502) 452-8414
	Caritas Medical Center	(502) 361-8610
	Caritas Peace Center	(502) 451-3330 x 149
	Carlin Institute Inc.	(502) 636-3648
	Central State Hospital	(502) 245-4121
	Christian Church Homes of Kentucky	(502) 583-6533 x 228
	Columbia Audubon Hospital	(502) 636-7185
	Columbia/HCA Healthcare Corp	(502) 580-2645
	Critical Care Connections Inc	(502) 332-6904
	D & R Pharmacare	(502) 459-3887
	Dr. Elizabeth Moran Fitzgerald	(502) 429-0084
	Frazier Rehab Center	(502) 582-7487
	Hazelwood Center	(502) 361-2301
	Health Care Promotions	(502) 366-4388
	Hillhaven Corporation	(502) 425-6474
	Hospice of Louisville	(502) 456-6200
	Housecall Home Healthcare	(502) 339-2700
	Hurstbourne Care Centre	(502) 495-6240
	Jefferson Community College	(502) 584-0181 x 2328/97
	Jefferson County Health Dept	(502) 574-5282
	Jefferson Place/Manor Nursing Home	(502) 426-5600
	Jewish Hospital	(502) 587-4375
	Kentuckiana Assn of Operating Room Nurses	(502) 491-4786
	Kentucky Association of Health Care Facilities	(502) 425-5000
	Kentucky Association of Homes for the Aging	(502) 635-6468
	Kentucky Association of Nurse Anesthetists	(502) 473-1457
	Kentucky Commission for Children with Special Needs	(502) 595-4459
	Kentucky Emergency Nurses Association Inc.	(502) 634-1239
	Kentucky Health Care Training	(502) 459-2021
	Kentucky Hospital Service Corp	(502) 456-6222
	Kentucky Nurses Association	(502) 637-2546
	Kentucky Tech - Jefferson State Campus	(502) 595-4275
	Kosair Children's Hospital	(502) 629-7359
	Louisville Area Assn of Occupational Health Nurses	(502) 587-4794
	Labcorp	(502) 456-4700
	Nazareth Home	(502) 459-9681
	Norton Hospital	(502) 629-7425
	Pharmacy Corp of America	(502) 266-0811
	St Anthony Medical Center	(502) 627-1000 x 1199
	Southwest Hospital	(502) 933-8389
	Spalding University	(502) 585-9911
	Spectracare Inc	(502) 429-5500
	Suburban Medical Center	(502) 899-6024
	University of Louisville Hospital	(502) 426-4824
	University of Louisville School of Nursing	(502) 852-5366
	VA Medical Center	(502) 895-3401 x 5731
	Vencor Hospital Louisville	(502) 587-7001
	Visiting Nurse Association	(502) 581-8687
MADISONVILLE	Madisonville Community College	(502) 821-2250
	Madisonville Health Technology Center	(502) 824-7552
	Regional Medical Center	(502) 825-5100
MANCHESTER	Memorial Hospital	(606) 598-5104 x 2730
MARTIN	Our Lady of the Way Hospital	(606) 285-5181
MAYFIELD	Columbia Pinalake Regional Hospital	(502) 251-4100
MAYSVILLE	Maysville Community College	(606) 759-7141
	Meadowview Regional Medical Center	(606) 759-5311 x 114
	Comp Home Healthcare Services Inc.	(606) 248-1062
MIDDLESBORO	Morehead State University	(606) 783-2635
MOREHEAD	St Claire Medical Center	(606) 783-6602
MOUNT STERLING	Mary Chiles Hospital	(606) 498-1220

MOUNTVERNON	Rockcastle Hospital & Respiratory Care Center.....	(606) 256-2195
MURRAY	Murray State University	(502) 762-2193
	Murray-Calloway County Hospital	(502) 762-1100
PADUCAH	Lourdes Hospital	(502) 444-2969
	Paducah Community College	(502) 554-6265
	Tina Baker, PH	(502) 444-2794
	Western Baptist Hospital	(502) 575-2723
PAINTSVILLE	Mayo State Vocational Technical School.....	(606) 789-5321
PIKEVILLE	Pikeville Methodist Hospital.....	(606) 437-3525
PINEVILLE	Pineville Community Hospital	(606) 337-3051
PRESTONSBURG	Highlands Regional Medical Center	(606) 886-8511
PRINCETON	The Pharmacy Corner	(502) 365-2078
RADCLIFF	Lincoln Trail Hospital	(502) 351-9444
RICHMOND	Eastern Kentucky University.....	(606) 622-2143
	Pattie A. Clay Hospital	(606) 623-3131 x 309
RUSSELL SPRINGS	Russell County Hospital	(502) 866-4141
RUSSELLVILLE	Columbia Logan Memorial Hospital	(502) 726-4011
SCOTTSVILLE	KSALPN - c/o Ethel Cline	(502) 622-4206
SHELBYVILLE	Jewish Hospital Shelbyville.....	(502) 647-4000
SOMERSET	Eastern Kentucky Neonatal Nurses Association.....	(606) 678-2000
	Health Innovations Inc	(606) 677-1025
	Lake Cumberland District Health Dept	(606) 679-4416
	Lake Cumberland Home Health Agency	(606) 679-7439
	Lake Cumberland Regional Hospital	(606) 679-7441 x 3105
	Lifeline Home Health Care	(606) 348-6000
	Oakwood	(606) 679-4361 x 292
	Somerset School of Practical Nursing	(606) 679-4303
SOUTH WILLIAMSON	South Williamson ARH	(606) 237-1700 x 4305
STANFORD	Fort Logan Hospital Foundation Inc	(606) 365-2187 x 201
TOMPKINSVILLE	Monroe County Medical Center	(502) 487-9231 x 336
WEST LIBERTY	Morgan County Appalachian Regional Hospital.....	(606) 743-3186
WINCHESTER	Clark Regional Medical Center	(606) 745-3449

MASSACHUSETTS:

SOUTHEASTON	Western Schools (SC Publishing)	(800) 438-8888
-------------------	---------------------------------------	----------------

TENNESSEE:

CLARKSVILLE	Austin Peay State University	(615) 648-7710
MURFREESBORO	National Health Corp L.P.	(615) 890-2020
NASHVILLE	University of Tennessee, CC Program	(615) 251-1214

NATIONAL NURSING ORGANIZATIONS RECOGNIZED BY THE KENTUCKY BOARD OF NURSING FOR APPROVAL OF CONTINUING EDUCATION OFFERINGS

American Academy of Nurse Practitioners (AANP).....	(512) 442-4262
American Association of Critical Care Nurses (AACN)	(800) 899-2226
American Association of Nurse Anesthetists (AANA)	(708) 692-7050
American College of Nurse-Midwives (ACNM)	(202) 728-9860
American Nurses Association (ANA); ANA Accredited National Nursing Organizations; and Constituent State Nurses Associations.....	(202) 554-4444
Association of Women's Health, Obstetrical & Neonatal Nurses (AWHONN).....	(202) 662-1600
National Association of Pediatric Nurse Associates & Practitioners (NAPNAP)	(606) 667-1773
National Association of Practical Nurses Education & Service (NAPNES)	(301) 588-2491
National Federation of Licensed Practical Nurses (NFLPN).....	(919) 781-4791
National League for Nursing (NLN)	(212) 989-4791
Other State Boards of Nursing	

The Kentucky Cabinet for Human Resources (CHR) by statute must approve all HIV/AIDS education courses. KBN recognizes CHR approved HIV/AIDS courses for nursing continuing education.

Investigation & Disciplinary Action

DISCIPLINARY ACTIONS FY 95-96

TYPE OF DISCIPLINARY ACTION	RN	PN
Licenses Revoked	3	3
Licenses Suspended	14	9
Immediate Temporary Suspension of Licenses	3	1
Licenses Suspended Followed by Probation	0	0
Licenses Suspended Followed by Limitation/Probation	4	0
Licenses Probated	5	3
Licenses Limited	0	0
Licenses Limited/Probated	27	11
Licenses Continued on Probation or Limitation	2	4
Voluntary Surrender of License	6	0
Requests for Reinstatement of Revoked/Suspended Licenses		
- Granted on a Probationary or Limited Basis	4	2
Admitted to NCLEX/Licenses Probated/Limited	2	1
Admission to NCLEX Denied	1	1
Licensure Reinstatement Denied	4	10
Reprimand	15	11
Licensure Denied	1	1
Consent Decree/Civil Penalty	72	13
No Action Taken	2	0

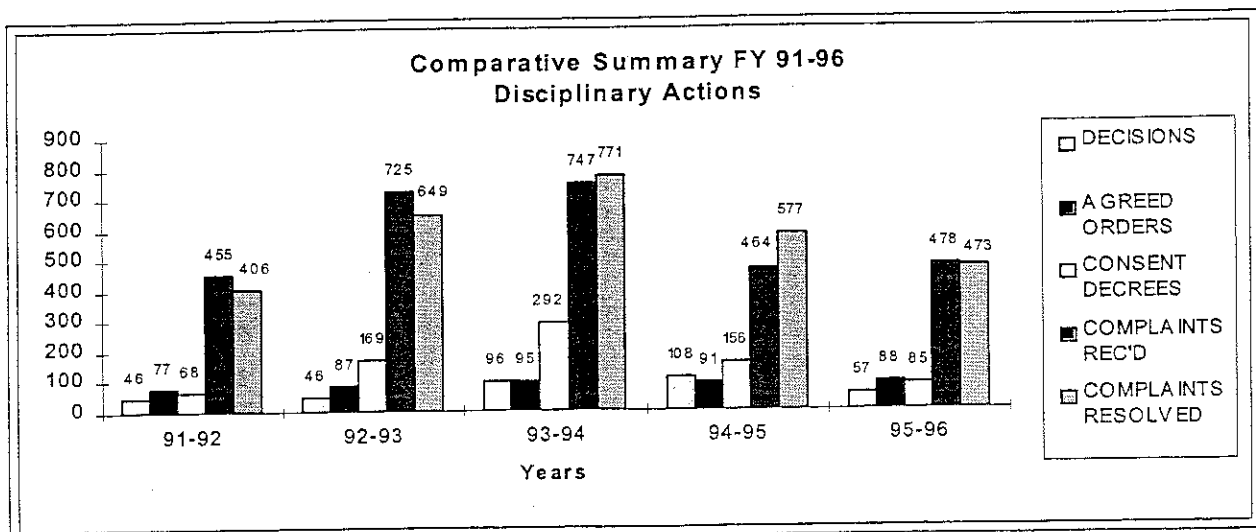
COMPLAINT ACTIVITY

Complaints for Applicants with Conviction Records Reviewed	174
Complaints/No Formal Action Deemed Necessary or Possible	69
Complaints Filed Away in Cases Where Individuals Could Not be Located, Were Deceased, or Criminal Charges Were Dismissed	54
TOTAL NUMBER OF COMPLAINTS RECEIVED	478
ACTIVE CASES AS OF JUNE 30, 1996	269

The *Kentucky Nursing Laws* provide that the Board of Nursing may "deny, limit, revoke, probate or suspend any license to practice nursing issued by the Board or applied for . . . or to otherwise discipline a licensee or to deny admission to the licensure examination, or to require evidence of evaluation and therapy"

The Board continues its efforts to make the public aware of the investigatory and disciplinary procedures and to emphasize the legal requirement to, and importance of, reporting nurses who are suspected of engaging in unsafe or illegal practices.

NOTE: The complaint activity listed above is included in the number of complaints received and resolved as shown on the graph below.



Nursing Practice

The Board interprets the legal scope of nursing practice according to *Kentucky Revised Statutes* Chapter 314 and Board of Nursing administrative regulations in the determination of safe and effective nursing care for the citizens of the Commonwealth. In response to inquiries requesting interpretation of the legal scope of nursing practice, the Board has published formal advisory opinion statements as guidelines for safe practice (see the chart at right), as well as issuing other opinions on nursing practice issues.

During FY 95-96, the Board addressed the following inquiries regarding nursing practice: Administration of epinephrine in emergency situations by RNs; performance of ambulation/mobility activities as independent nursing interventions by nurses; performance of respiratory tract suctioning by LPNs in the home health setting; performance of Healing Touch, Therapeutic Touch and Massage Therapy by RNs; conversion of medication administration routes from parenteral to oral by RNs; administration of oral ketamine hydrochloride (Ketalar) for conscious sedation by RNs; role of RNs in the administration of medications during rapid sequence induction (RIS); performance of esophageal motility studies by nurses; and delegation of Tuberculin (TB) skin test interpretation to unlicensed personnel by nurses.

KBN ADVISORY OPINION STATEMENTS

83-01	Role of the Registered Nurse/Licensed Practical Nurse in Spinal Screening for Detection of Common Abnormal/Curvatures of the Spine
83-02	Role of the Advanced Registered Nurse Practitioner, Registered Nurse, and Licensed Practical Nurse in Gynecological Cancer Detection
83/89B-03	Roles of Nurses in Intravenous Therapy Practice
84-04	Roles of Registered Nurses and Advanced Registered Nurse Practitioners in the Administration of Medication per Intraspinal Routes
* 84-05	The Performance of Advanced Life Support Procedures by Registered Nurses
* 84-06	The Performance of Arterial Puncture by Registered Nurses
84-07	The Performance of Stapling and Suturing for Superficial Wound Closure by Registered Nurses, and the Removal of Staples and Sutures by Nurses
84-08	Role of the Registered Nurse First Assistant
95-09	The Performance of Wound Debridement by Nurses
85-10	Roles of Nurses in the Care of Intrapartum Patients
* 85-11	Roles of Nurses in the Insertion and Removal of a Gastric Tube and in the Reinsertion of a Gastrostomy Tube
85-12	Advanced Registered Nurse Practitioner Prescription Authority
85-13	Roles of Registered Nurses in Psychiatric and Mental Health Nursing Practice
87-14	Roles of Nurses in the Implementation of Patient Care Orders
* 87-15	Roles of Nurses in the Supervision and Delegation of Nursing Acts to Unlicensed Personnel
87-16	Roles of Nurses in the Administration of Medication via Various Routes
87-17	Roles of Nurses in the Administration of "PRN" Medication
87-18	Employment of Students in Nursing
* 88-19	Responsibility and Accountability of Nurses for Patient Care Assignments and Nursing Care Delivery
89-20	Roles of Registered Nurses in Invasive Cardiac Procedures
90-21	Roles of Nurses in Dialysis
90-22	Roles of Nurses who Provide "Private Duty" Nursing
90-23	The Application and Removal of a Cast or Splint by Nurses
* 90-24	Responsibility and Accountability for Assuring Safe Patient Care by Nurses Employed in Health Care Facilities
91-25	Peripheral Insertion of Central and Long Line Intravenous Catheters by Nurses
91-26	Roles of Nurses in the Delivery of Prehospital Emergency Medical Care via Ambulance Services
92-27	Components of Licensed Practical Nursing Practice
92-28	Roles of Nurses and Unlicensed Nursing Personnel in Endoscopic Procedures
* 93-29	Cardiopulmonary/Respiratory Nursing Practice
93-30	School Nursing Practice
94-31	Removal of Femoral Access Devices (Sheaths) and Use of Mechanical Compression Devices by Registered Nurses
95-32	Intravenous Administration of Medications for Conscious Sedation by Nurses

* These advisory opinion statements were either reviewed, revised, or developed during FY 95-96.

Nursing Incentive Scholarship Fund

The Nursing Incentive Scholarship Fund (NISF) provides scholarships to Kentucky residents who will be attending in-state approved prelicensure nursing programs (registered nurse or practical nurse) or in-state graduate nursing programs. To be eligible for consideration, an applicant must have a designated sponsor (health care facility or educational institution) who matches any NISF monies awarded in return for the applicant's service upon completion of the educational program.

Due to the reduced demand for licensed nurses in the workplace and the resulting decrease in sponsor participation, the eligible NISF applicant pool significantly decreased in FY 94-95 and FY 95-96.

SUMMARY DATA NURSING INCENTIVE SCHOLARSHIP FUND					
APPLICANT/RECIPIENT DATA	FY 91-92	FY 92-93	FY 93-94	FY 94-95	FY 95-96
# Applications Mailed Out:	1123	1215	1146	1151	1027
# Applications Received/Processed:	149	120	51	39	38
# Applications Incomplete/Not Funded:	23	20	9	7	5
# Applications Complete/Not Funded:	56	30	2	3	0
# Applications Approved/Funded:	70	70	40	29	33
(Initial)	39	40	21	16	19
(Continuation)	31	30	19	13	14
# Recipients Graduated: (132)	34	47	21	16	Data Not Available Yet
# Completed Work Obligation: (81)	12	21	38	10	Data Not Available Yet

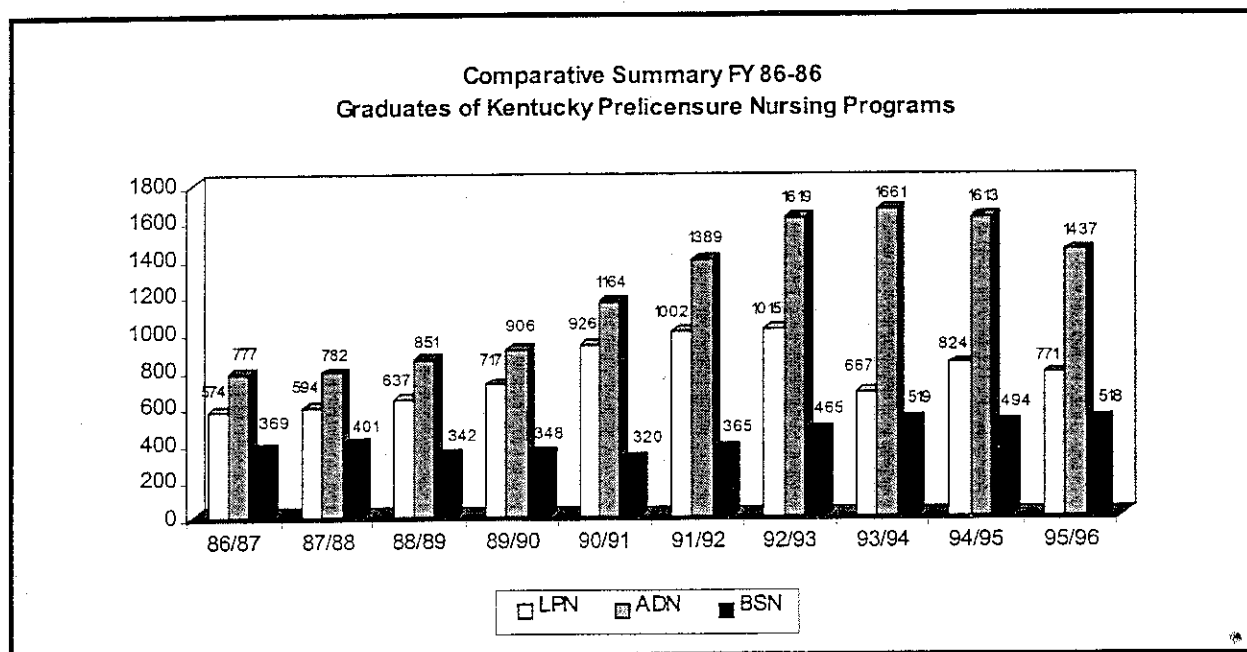
NOTE: Those who have completed their work obligation are also included in the number graduated.

DISBURSEMENT DATA	FY 91-92	FY 92-93	FY 93-94	FY 94-95	FY 95-96
NISF Fund Balance:	\$108,800	\$121,100	\$133,800	\$146,400	\$150,800
NISF Disbursements:	\$97,430	\$102,195	\$54,040	\$40,340	\$52,660
(Initial)	\$51,680	\$59,325	\$28,860	\$22,190	\$30,830
(Continuation)	\$44,750	\$42,870	\$25,180	\$18,150	\$21,830

NOTE: Fiscal activity reflects awards designated for the following year. FY 95-96 indicates the potential amount awarded, while the other fiscal years indicate the actual amount disbursed.

Prelicensure Programs of Nursing

The Kentucky Board of Nursing is the legally authorized body in the Commonwealth to approve programs of nursing preparing persons for eligibility for licensure as nurses. Through the provisions of the *Kentucky Nursing Laws* (KRS 314.011, 314.031, 314.111 and 314.131), the Board prescribes standards for educational institutions offering programs which prepare candidates for licensure as nurses. These standards include provisions for consultation, survey visits, review of Annual Reports and Faculty Summaries, monitoring of fiscal year licensure examination pass rates, and requests for and review of other special reports.



SOURCE: 1986-96 Annual Reports from Kentucky Prelicensure Programs of Nursing

NCLEX Pass Rates

With the April 1994 implementation of computer adaptive technology, eligible licensure candidates may schedule the NCLEX examination at a time of personal preference. Unless requested otherwise, all first-time candidates are scheduled to test within a maximum of 30 days of requesting a testing appointment at the testing center of choice.

Since NCLEX testing is now on a demand basis, the reporting of pass rates by programs of nursing is based upon the numbers of graduates from a program of nursing during a fiscal year (i.e., July 1, 1995 through June 30, 1996) who test prior to November 1, 1996.

Kentucky Nurse Licensees

The Board's mission of public protection is accomplished through the licensure and registration of those applicants who meet statutory and regulatory requirements. KRS 314.031 states "It shall be unlawful for any person to call or hold himself out as or use the title of nurse or to practice or offer to practice as a nurse unless licensed under the provision of KRS 314" The *Kentucky Nursing Laws* provide that "The license of every person under the provisions of KRS 314 . . . shall be renewed at least biennially" 201 Kentucky Administrative Regulation 20:080 states that the licensure period shall be November 1 to October 31.

BIENNIAL LICENSURE/CE EARNING SCHEDULE		
REGISTERED NURSE LICENSURE/EARNING PERIOD	EARNING REQUIREMENT	FOR RENEWAL BY
11/1/94 - 10/31/96	30 Contact Hours	10/31/96
11/1/96 - 10/31/98	30 Contact Hours	10/31/98
11/1/98 - 10/31/00	30 Contact Hours	10/31/00
11/1/00 - 10/31/02	30 Contact Hours	10/31/02
PRACTICAL NURSE LICENSURE/EARNING PERIOD	EARNING REQUIREMENT	FOR RENEWAL BY
11/1/93 - 10/31/95	30 Contact Hours	10/31/95
11/1/95 - 10/31/97	30 Contact Hours	10/31/97
11/1/97 - 10/31/99	30 Contact Hours	10/31/99
11/1/99 - 10/31/01	30 Contact Hours	10/31/01

Licensés issued by the Kentucky Board of Nursing are titled "registered nurse" (RN) and "licensed practical nurse" (LPN). Active licensure status grants recipients the privilege to practice nursing in the Commonwealth of Kentucky. Inactive status allows the use of the licensure title but prohibits the practice of nursing in the Commonwealth. During FY 95-96, there were 43,562 registered nurse licensees (39,928 active and 3,634 inactive) and 14,348 practical nurse licensees (13,005 active and 1,343 inactive).

LICENSURE TOTALS BY TYPE AND STATUS				
LICENSURE TYPE	REGISTERED NURSE		PRACTICAL NURSE	
	ACTIVE	INACTIVE	ACTIVE	INACTIVE
TOTAL CURRENT LICENSEES AS OF JUNE 1996	39,928	3,634	13,005	1,343
TOTAL OUT-OF-COUNTRY	34	14	3	0
TOTAL OUT-OF-STATE	5,835	1,994	1,260	391
TOTAL RESIDING IN KENTUCKY	34,059	1,626	11,742	952
LICENSES ISSUED BY REINSTATEMENT	244		232	
LICENSES ISSUED BY ACTIVATION/INACTIVATION	85		37	

Licensure & Registration

KENTUCKY REGISTERED NURSE LICENSEES
BY COUNTY OF RESIDENCE, EDUCATIONAL LEVEL & EMPLOYMENT DATA
FY 95-96

COUNTY	RNS	HIGHEST EDUCATIONAL LEVEL ATTAINED								EMPLOYMENT DATA					
		UKN	DIP	ADN	BSN	BAC OTH	MSN	MS OTH	DR OTH	FT	PT	UN	OTH	RET	UKN
ADAIR	88	--	12	57	12	3	4	--	--	69	7	4	2	3	3
ALLEN	82	--	7	49	11	4	8	3	--	68	4	7	1	--	2
ANDERSON	152	--	14	110	22	2	3	1	--	102	17	16	4	--	13
BALLARD	67	1	2	52	9	--	2	1	--	48	6	4	1	--	8
BARREN	270	2	36	176	42	9	3	2	--	183	36	24	4	9	14
BATH	61	--	5	46	7	1	--	2	--	48	1	5	--	1	6
BELL	245	1	38	178	11	7	7	3	--	178	12	24	3	7	21
BOONE	637	1	134	282	151	31	23	11	4	317	178	54	23	6	59
BOURBON	162	--	15	102	30	4	7	3	1	109	18	17	3	6	9
BOYD	661	--	137	396	91	18	13	6	--	439	95	70	14	11	32
BOYLE	243	1	42	130	50	9	8	3	--	161	32	19	3	11	17
BRACKEN	70	1	5	53	7	3	1	--	--	47	11	5	1	2	4
BREATHITT	127	2	12	90	18	1	2	2	--	83	7	19	5	1	12
BRECKINRIDGE	106	--	20	67	18	--	1	--	--	62	21	16	--	3	4
BULLITT	386	--	53	212	102	6	8	5	--	281	47	24	5	5	24
BUTLER	70	--	3	55	10	1	1	--	--	45	8	6	1	2	8
CALDWELL	103	--	6	72	17	5	2	1	--	75	14	8	1	--	5
CALLOWAY	251	--	27	68	119	8	17	5	7	164	28	22	4	9	24
CAMPBELL	763	1	167	376	136	41	28	8	6	382	213	54	17	20	77
CARLISLE	48	--	--	35	11	2	--	--	--	31	6	6	1	--	4
CARROLL	46	--	15	21	7	--	2	1	--	26	14	1	2	1	2
CARTER	198	--	18	143	27	7	2	1	--	143	14	29	5	1	6
CASEY	66	--	3	50	12	1	--	--	--	51	3	5	1	--	6
CHRISTIAN	447	1	60	282	73	11	18	2	--	309	33	42	12	17	34
CLARK	274	--	37	141	70	9	11	4	2	205	36	17	3	3	10
CLAY	111	--	13	72	22	2	--	2	--	82	8	6	--	3	12
CLINTON	55	--	--	44	10	--	--	1	--	46	1	6	--	--	2
CRITTENDEN	89	--	8	66	10	5	--	--	--	60	11	9	2	1	6
CUMBERLAND	42	--	6	26	7	1	2	--	--	32	3	2	--	--	5
DAVISS	1002	1	166	612	147	38	22	13	3	615	146	118	22	38	63
EDMONSON	32	--	4	24	3	1	--	--	--	26	2	1	--	1	2
ELLIOTT	34	--	2	21	9	1	1	--	--	22	3	4	--	1	4
ESTILL	75	--	3	52	15	4	1	--	--	50	9	7	5	1	3
FAYETTE	3918	13	603	1476	1287	175	246	81	37	2545	588	339	84	102	260
FLEMING	108	--	11	78	12	3	2	2	--	79	9	10	2	--	8
FLOYD	315	--	25	229	36	14	8	3	--	231	14	36	7	5	22
FRANKLIN	371	--	62	201	61	21	17	6	3	244	44	38	14	7	24
FULTON	32	--	4	17	7	2	1	--	1	21	5	2	1	--	3
GALLATIN	24	--	5	16	1	1	--	1	--	15	2	2	--	--	5
GARRARD	113	--	17	68	17	6	4	1	--	93	6	4	3	2	5
GRANT	79	--	17	47	12	2	1	--	--	42	16	8	5	1	7
GRAVES	308	2	21	209	61	6	7	2	--	187	37	27	10	2	45
GRAYSON	186	--	28	136	8	5	4	5	--	124	31	12	7	4	8
GREEN	67	1	7	48	8	2	--	1	--	50	2	9	1	--	5
GREENUP	345	--	56	233	35	11	9	1	--	221	53	30	3	11	27
HANCOCK	63	--	8	45	6	2	2	--	--	39	16	3	2	2	1
HARDIN	871	2	84	529	186	21	28	16	4	535	143	82	10	11	90
HARLAN	278	--	79	163	19	6	8	3	--	207	14	30	5	8	14
HARRISON	124	1	21	72	25	3	2	--	--	84	17	6	6	6	5
HART	90	--	10	57	15	4	2	2	--	70	14	3	--	1	2
HENDERSON	457	--	51	314	51	14	19	7	1	301	66	39	10	15	26
HENRY	98	1	15	56	19	3	3	1	--	65	11	13	2	1	6
HICKMAN	31	1	3	16	8	2	1	--	--	18	5	3	2	--	3
HOPKINS	498	--	29	346	75	20	19	9	--	287	84	60	8	7	52
JACKSON	48	--	5	33	6	3	--	1	--	33	5	5	1	1	3
JEFFERSON	7932	22	1697	2678	2610	342	306	227	50	5074	1369	532	226	217	374
JESSAMINE	428	1	48	192	133	24	20	7	3	254	71	39	13	5	39
JOHNSON	158	--	8	113	21	7	6	3	--	113	11	9	7	5	12
KENTON	1336	5	349	547	259	97	47	25	7	650	374	109	49	31	96
KNOTT	124	--	6	104	11	1	1	1	--	93	5	11	--	1	9
KNOX	158	1	15	115	12	10	4	1	--	113	7	11	2	1	19
LARUE	98	--	13	71	10	2	1	1	--	64	20	2	4	1	6

DIP = Diploma Program
ADN = Associate Degree in Nursing
BSN = Baccalaureate Degree in Nursing
BAC OTH = Baccalaureate in Other Field

MSN = Masters Degree in Nursing
MS OTH = Masters in Other Field
DR OTH = Doctorate Degree in Nursing or Other Field

FT = Full Time in Nursing
PT = Part Time in Nursing
UN = Unemployed
OTH = Employed in Other Field

RET = Retired
UKN = No Known Data

(Continued)
KENTUCKY REGISTERED NURSE LICENSEES
BY COUNTY OF RESIDENCE, EDUCATIONAL LEVEL & EMPLOYMENT DATA

COUNTY	RNS	HIGHEST EDUCATIONAL LEVEL ATTAINED								EMPLOYMENT DATA					
		UK	DIP	ADN	BSN	BAC OTH	MSN	MS OTH	DR OTH	FT	PT	UN	OTH	RET	UKN
LAUREL	328	--	30	207	68	13	7	3	--	215	26	44	3	2	38
LAWRENCE	86	--	19	60	4	2	--	1	--	62	13	4	2	--	5
LEE	26	--	3	20	3	--	--	--	--	19	3	2	--	1	1
LESLIE	86	--	9	53	12	6	4	2	--	58	7	6	4	1	10
LETCHER	220	1	21	179	11	4	3	1	--	157	14	22	5	1	21
LEWIS	57	1	4	40	10	1	1	--	--	39	4	6	2	2	4
LINCOLN	110	--	12	89	16	2	--	--	--	95	6	10	2	1	5
LIVINGSTON	100	--	10	65	15	3	7	--	--	67	11	6	2	2	12
LOGAN	130	--	15	87	18	7	--	3	--	84	19	10	4	2	11
LYON	67	--	6	44	14	2	--	1	--	39	5	12	1	2	8
McCRACKEN	885	--	103	559	145	37	29	12	--	582	103	76	25	29	70
McCREARY	68	--	2	55	8	2	--	1	--	53	9	4	1	--	1
McLEAN	108	--	11	80	12	3	--	2	--	74	12	11	2	3	6
MADISON	635	3	64	260	209	32	38	18	11	420	93	46	11	11	54
MAGOFFIN	46	--	--	37	8	--	1	--	--	36	2	4	--	--	4
MARION	114	--	12	68	23	4	2	4	1	86	7	7	2	--	12
MARSHALL	260	1	25	158	55	10	7	2	2	167	36	16	5	8	28
MARTIN	57	--	4	49	4	--	--	--	--	38	1	10	--	1	7
MASON	160	--	33	94	16	8	4	5	--	104	20	11	5	7	13
MEADE	99	--	25	57	14	1	1	1	--	58	14	17	2	4	4
MENIFEE	18	--	2	13	1	--	2	--	--	14	--	2	--	--	2
MERCER	154	3	28	91	25	3	4	--	--	105	18	10	2	3	16
METCALFE	46	--	5	32	6	3	--	--	--	35	4	4	--	--	3
MONROE	48	--	6	29	9	1	1	2	--	33	4	3	1	--	7
MONTGOMERY	127	--	15	78	22	6	4	1	1	87	16	10	4	2	8
MORGAN	67	--	4	53	6	3	1	--	--	53	2	8	1	--	3
MUHLENBERG	267	--	16	213	29	4	3	2	--	171	30	20	4	8	34
NELSON	263	--	50	135	52	9	13	4	--	181	39	19	10	2	12
NICHOLAS	40	--	10	25	3	1	1	--	--	32	1	1	2	1	3
OHIO	194	--	16	153	18	5	1	1	--	121	18	28	5	4	18
OLDHAM	588	1	133	199	193	29	21	10	2	353	131	46	19	9	30
OWEN	55	--	12	36	5	1	1	--	--	36	9	4	--	3	3
OWSLEY	24	--	1	17	5	--	--	1	--	15	1	3	--	--	5
PENDLETON	60	--	11	34	14	1	--	--	--	34	13	5	2	1	5
PERRY	279	1	31	190	36	5	9	5	2	195	11	35	4	1	33
PIKE	388	1	34	297	39	5	8	3	1	251	34	38	5	5	55
POWELL	49	--	2	37	7	2	1	--	--	36	3	5	2	--	3
PULASKI	419	2	49	270	72	11	9	6	--	294	48	33	9	8	27
ROBERTSON	16	--	1	12	3	--	--	--	--	11	--	3	1	--	1
ROCKCASTLE	76	--	8	51	15	1	--	--	1	53	5	7	2	3	6
ROWAN	197	--	18	100	45	11	15	5	3	145	13	23	4	3	9
RUSSELL	91	--	6	71	11	2	1	--	--	62	7	8	2	3	9
SCOTT	239	--	32	125	56	7	12	7	--	153	40	25	7	7	7
SHELBY	247	--	49	116	58	15	4	4	1	161	44	19	8	2	13
SIMPSON	75	--	11	47	12	4	--	--	1	50	14	8	--	--	3
SPENCER	72	1	13	34	22	1	1	--	--	52	10	3	3	1	3
TAYLOR	140	--	15	95	23	3	1	3	--	106	16	7	--	1	10
TODD	46	--	7	29	7	--	3	--	--	31	3	5	1	1	5
TRIGG	92	--	13	56	15	1	3	4	--	72	6	8	3	1	2
TRIMBLE	25	--	5	15	4	--	1	--	--	15	2	5	--	1	2
UNION	143	1	12	106	17	3	--	4	--	87	14	15	4	2	21
WARREN	896	1	115	479	179	65	28	25	4	608	122	70	24	15	57
WASHINGTON	53	--	10	29	10	2	--	2	--	36	4	9	--	--	4
WAYNE	89	--	8	62	17	1	--	1	--	68	7	9	2	--	3
WEBSTER	118	--	6	96	14	1	--	1	--	74	16	15	5	1	7
WHITLEY	281	--	31	197	34	6	9	3	--	193	26	27	9	4	22
WOLFE	38	--	1	29	7	1	--	--	--	29	4	1	--	--	4
WOODFORD	293	--	46	140	71	17	12	3	4	193	45	25	13	3	14
COUNTY TOTAL	35560	80	5607	18421	8124	1411	1238	641	163	23206	5313	3064	861	781	2460
Unknown/Invalid	125	--	--	--	--	--	--	--	--	--	--	--	--	--	--
Out-of-Country	48	2	16	8	10	7	1	2	2	29	9	5	4	--	1
Out-of-State	7828	43	1754	2639	2174	426	452	255	85	4625	1158	792	195	206	853
TOTAL	43561	125	7377	21068	10308	1844	1691	898	250	27860	6480	3861	1060	987	3314

**KENTUCKY PRACTICAL NURSE LICENSEES
BY COUNTY OF RESIDENCE & EMPLOYMENT DATA
FY 95-96**

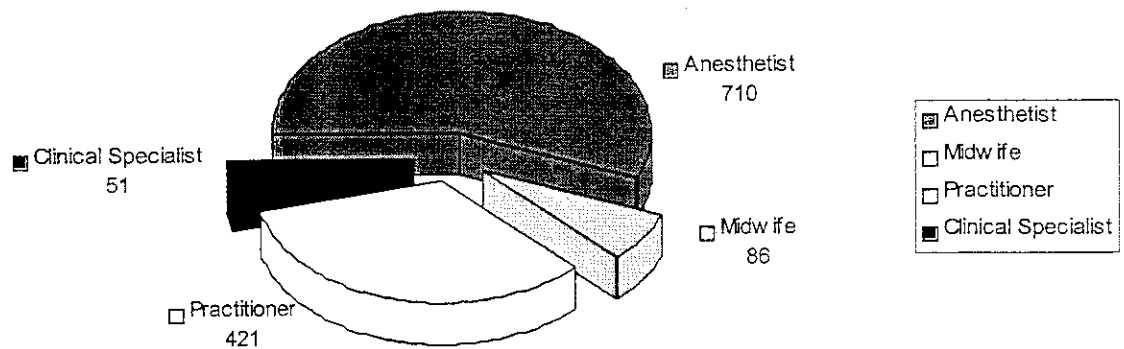
COUNTY	PNS	EMPLOYMENT DATA						COUNTY	PNS	EMPLOYMENT DATA					
		FT	PT	UN	OTH	RET	UK			FT	PT	UN	OTH	RET	UK
ADAIR	58	37	6	8	3	--	3	LEE	13	10	--	3	--	--	--
ALLEN	57	42	10	3	--	--	2	LESLIE	49	31	5	6	1	--	6
ANDERSON	34	19	4	4	2	--	4	LETCHER	184	132	6	26	3	1	16
BALLARD	36	24	5	5	1	--	1	LEWIS	35	24	2	1	2	--	6
BARREN	264	196	27	22	13	3	1	LINCOLN	165	110	11	25	9	5	5
BATH	57	45	5	6	--	1	--	LIVINGSTON	33	20	4	7	1	--	1
BELL	140	99	7	25	6	1	1	LOGAN	55	38	7	6	3	1	--
BOONE	234	122	54	29	10	7	6	LYON	22	14	--	3	2	3	--
BOURBON	46	36	3	1	1	--	3	McCRACKEN	253	178	31	29	4	6	5
BOYD	253	136	48	40	6	12	10	McCREARY	66	42	6	14	1	--	3
BOYLE	171	106	18	21	17	9	1	McLEAN	39	24	7	5	2	--	1
BRACKEN	40	28	6	2	1	--	4	MADISON	119	74	13	21	3	3	5
BREATHITT	59	41	3	10	--	--	4	MAGOFFIN	40	24	2	9	2	--	3
BRECKINRIDGE	40	21	10	4	--	--	5	MARION	85	50	5	19	3	1	7
BULLITT	152	108	16	15	5	4	5	MARSHALL	135	93	18	15	4	1	4
BUTLER	32	25	2	3	2	--	--	MARTIN	26	16	--	4	--	1	5
CALDWELL	42	28	7	4	1	1	--	MASON	48	31	5	4	2	1	5
CALLOWAY	175	126	19	13	6	8	3	MEADE	35	24	3	3	1	1	3
CAMPBELL	226	128	48	30	10	2	11	MENIFEE	17	11	2	2	1	1	--
CARLISLE	19	15	1	1	1	--	--	MERCER	146	93	20	21	5	2	5
CARROLL	38	21	3	5	--	1	8	METCALFE	47	36	7	3	--	1	--
CARTER	78	52	4	12	2	--	4	MONROE	44	34	4	3	2	--	1
CASEY	74	52	3	11	2	--	6	MONTGOMERY	63	50	4	3	1	1	4
CHRISTIAN	239	171	12	23	10	7	19	MORGAN	31	22	1	4	1	--	3
CLARK	108	77	9	12	3	1	6	MUHLBERG	135	82	24	15	7	4	3
CLAY	72	57	3	8	--	--	3	NELSON	96	65	6	18	1	--	6
CLINTON	51	41	5	2	--	--	2	NICHOLAS	22	16	3	1	1	1	--
CRITTENDEN	28	20	2	5	1	--	--	OHIO	81	48	14	14	1	2	2
CUMBERLAND	43	33	3	4	--	1	2	OLDHAM	95	57	14	8	4	3	9
DAVIESS	337	203	43	49	15	13	13	OWEN	32	22	4	--	1	1	4
EDMONSON	30	25	4	1	--	--	--	OWSLEY	5	5	--	--	--	--	--
ELLIOTT	18	14	1	3	--	--	--	PENDLETON	42	22	7	5	3	--	5
ESTILL	29	20	3	3	1	--	1	PERRY	179	125	10	29	6	1	8
FAYETTE	644	441	63	61	21	21	36	PIKE	339	218	36	47	15	4	19
FLEMING	39	24	6	4	1	--	2	POWELL	37	24	6	3	--	--	4
FLOYD	224	157	9	32	9	2	14	PULASKI	253	179	24	24	11	3	12
FRANKLIN	50	32	8	2	4	1	1	ROBERTSON	11	10	1	--	--	--	--
FULTON	15	11	2	1	--	--	1	ROCKCASTLE	65	39	8	13	2	--	3
GALLATIN	24	8	7	3	--	--	5	ROWAN	62	40	9	9	3	--	1
GARRARD	56	38	5	9	1	--	1	RUSSELL	56	36	12	5	1	--	2
GRANT	60	33	15	6	2	--	3	SCOTT	66	48	7	6	2	2	1
GRAVES	155	98	25	27	3	--	1	SHELBY	58	34	8	4	2	3	7
GRAYSON	40	15	8	8	1	1	4	SIMPSON	30	22	3	2	--	--	3
GREEN	65	55	4	4	3	--	1	SPENCER	18	9	3	4	--	--	2
GREENUP	128	76	21	21	4	2	5	TAYLOR	56	41	5	4	3	--	3
HANCOCK	30	13	10	2	3	--	2	TODD	23	15	4	3	--	1	--
HARDIN	263	151	39	30	7	1	32	TRIGG	33	24	1	5	--	2	1
HARLAN	100	76	6	10	3	3	2	TRIMBLE	30	19	1	4	--	--	3
HARRISON	46	25	7	9	3	2	--	UNION	38	27	6	6	3	1	--
HART	84	61	8	10	2	--	1	WARREN	170	114	31	22	3	2	5
HENDERSON	104	74	8	13	4	4	2	WASHINGTON	44	29	4	7	2	2	1
HENRY	43	26	2	5	--	1	7	WAYNE	65	47	7	9	3	--	--
HICKMAN	18	13	3	--	--	1	1	WEBSTER	63	31	13	11	2	1	2
HOPKINS	219	145	27	22	9	8	9	WHITLEY	81	58	10	8	2	2	3
JACKSON	20	8	5	6	--	--	1	WOLFE	22	16	2	2	--	--	3
JEFFERSON	1829	1183	240	173	60	52	121	WOODFORD	39	25	9	4	3	1	2
JESSAMINE	138	98	13	16	5	1	5	COUNTY TOTAL							
JOHNSON	97	60	--	24	5	4	4	12694	8334	1505	1502	476	250	627	
KENTON	437	246	101	44	25	6	15	Out-of-Country							
KNOTT	88	58	5	15	6	--	4	3	2	--	1	--	--	--	--
KNOX	98	78	4	14	1	--	1	1651	974	192	209	61	25	190	
LARUE	44	27	4	7	1	--	5	Out-Of-State							
LAUREL	84	65	5	12	--	1	1	TOTAL							
LAWRENCE	76	43	11	12	2	--	8	14348	9310	1697	1712	537	275	817	

ARNP Registrations

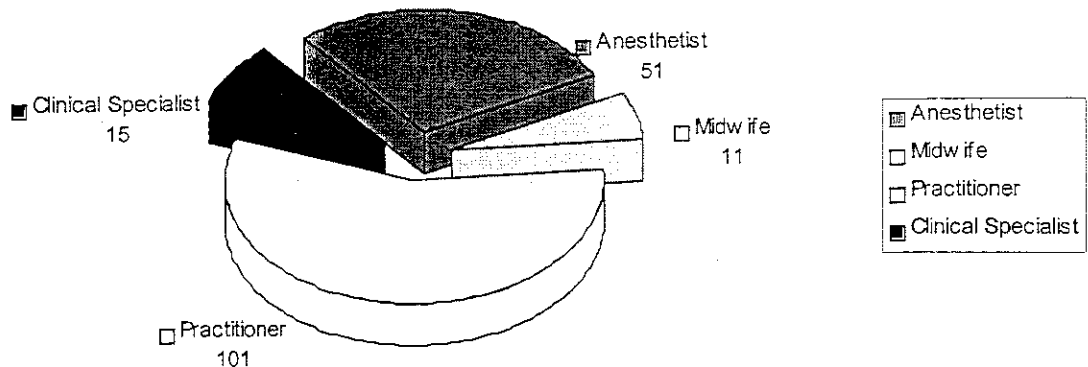
Since 1978, *Kentucky Revised Statutes* 314.131(1) empower the Board to register and designate those persons qualified to engage in advanced nursing practice. KRS 314.011(6) and (7) define "advanced registered nurse practitioner" and "advanced registered nursing practice," respectively. The Kentucky Board of Nursing registers qualified individuals as advanced registered nurse practitioners (ARNP) designated either as nurse anesthetist, nurse-midwife, nurse practitioner, or nurse clinical specialist.

ADVANCED REGISTERED NURSE PRACTITIONER REGISTRATIONS CUMULATIVE AND NEW FY 95-96

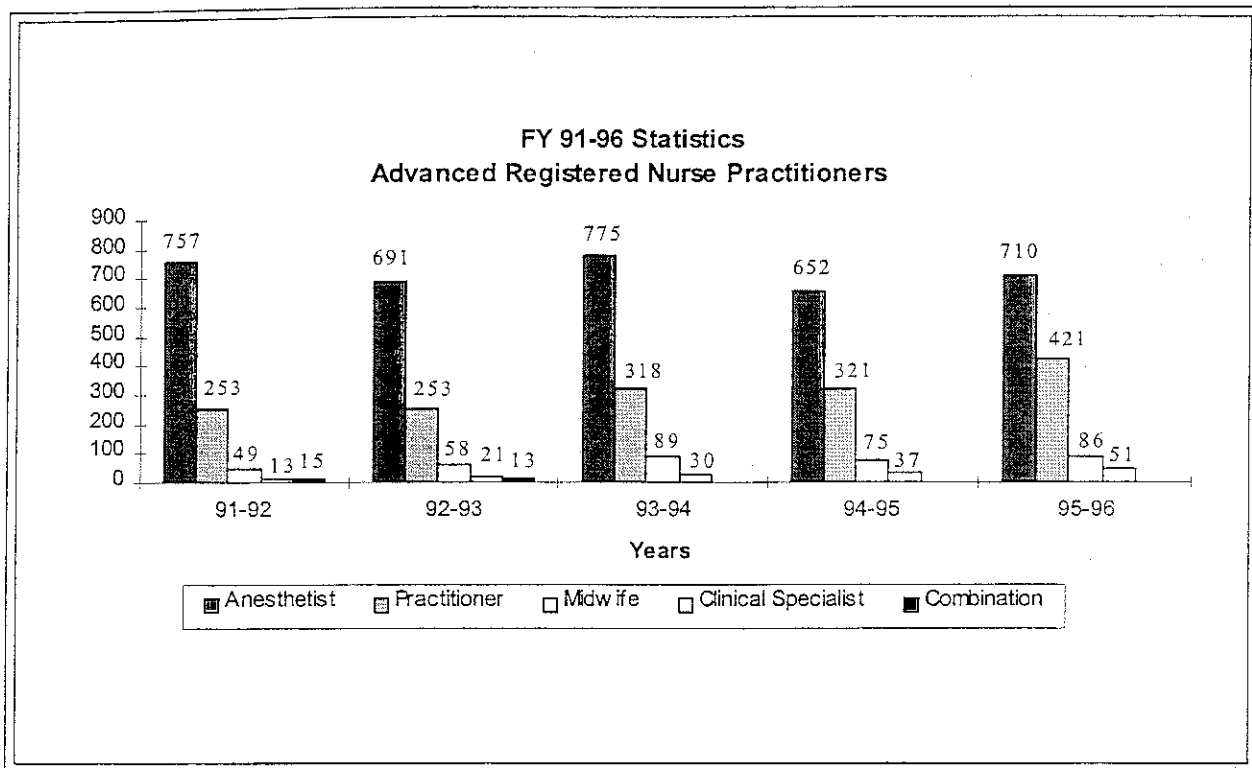
Cumulative Registrations Total = 1,268



New Registrations Total = 178



(Continued)
ARNP Registrations



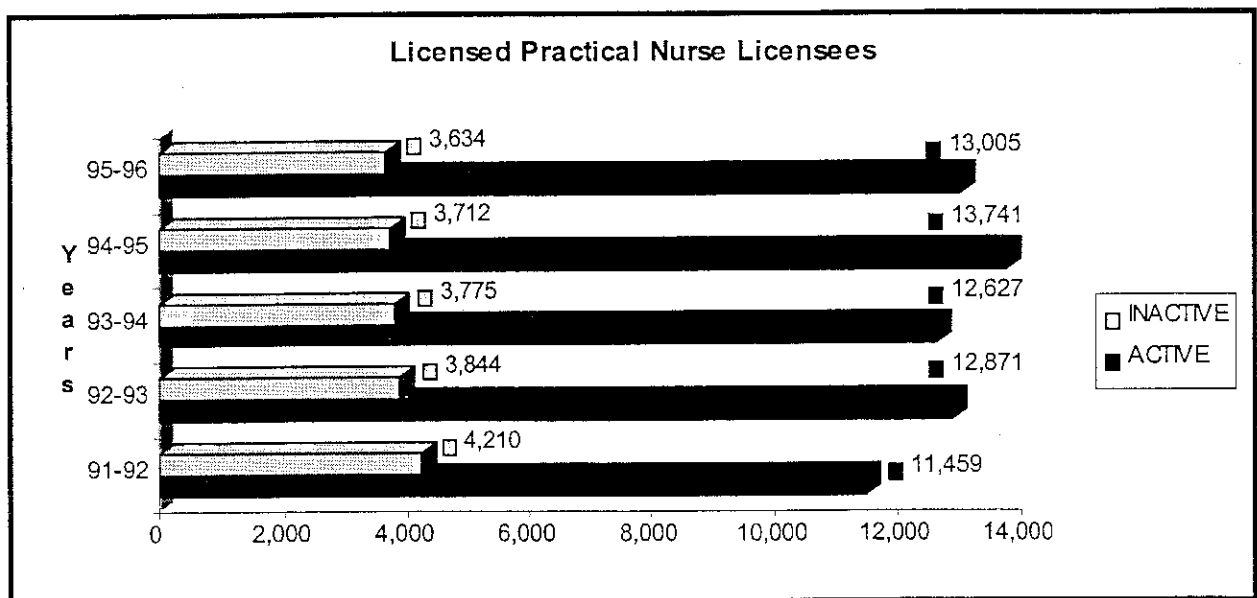
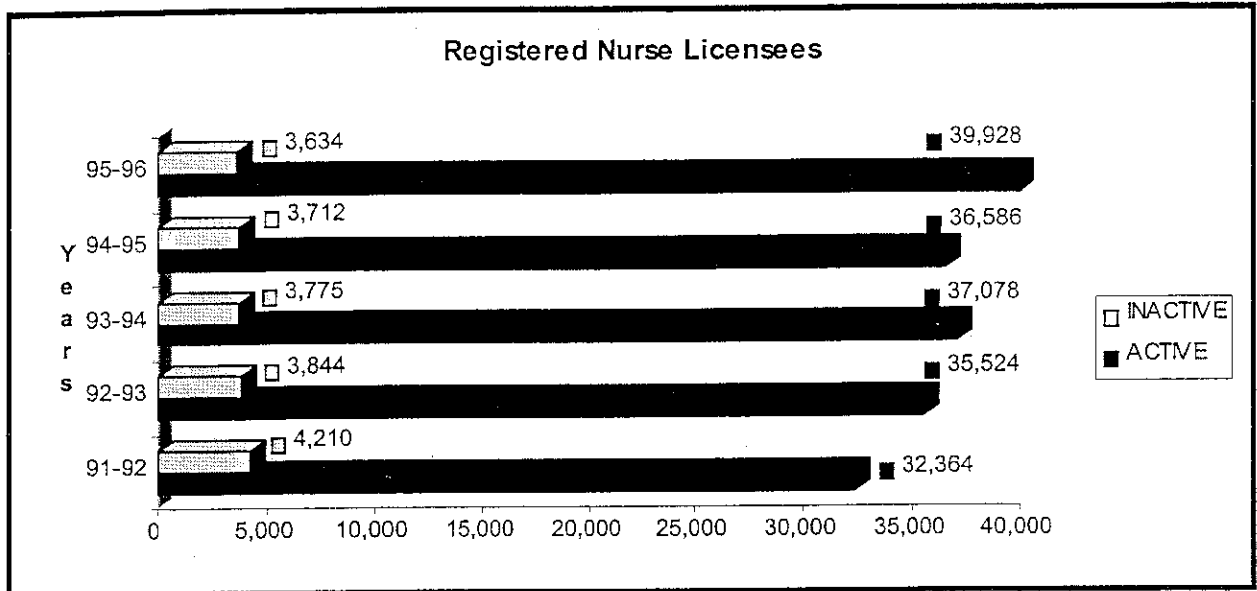
NOTE: The "Combination" category was eliminated as a separate grouping during FY 93-94. Those who hold "dual" registrations are now reflected in the individual registration categories they hold.

Licensure By Endorsement

The *Kentucky Nursing Laws* (KRS 314.041(4) and 314.051(5) authorize the Board to issue licenses to practice nursing in the Commonwealth to those nurses who have "... passed the examination prescribed by the Board or its equivalent and been licensed ... under the laws of another state, territory, or foreign country, if in the opinion of the Board, the applicant is qualified to practice professional nursing in this state." During FY 95-96, a total of 1,051 registered nurses and 296 practical nurses were granted active Kentucky nurse licensure via endorsement from another state, territory, or foreign country.

KENTUCKY NURSING LICENSES BY ENDORSEMENT & VERIFICATIONS TO OTHER BOARDS									
JURISDICTION OF ORIGINAL LICENSURE	ENDORSEMENT LICENSED BY KY		VERIFICATIONS TO OTHER BDS		JURISDICTION OF ORIGINAL LICENSURE	ENDORSEMENTS LICENSED BY KY		VERIFICATIONS TO OTHER BDS	
	RN	PN	RN	PN		RN	PN	RN	PN
ALABAMA	20	2	24	2	NEBRASKA	5	--	3	1
ALASKA	2	--	7	--	NEVADA	1	--	14	2
ARIZONA	3	--	13	3	NEW HAMPSHIRE	3	--	--	--
ARKANSAS	8	4	5	2	NEW JERSEY	6	--	12	1
CALIFORNIA	21	2	29	6	NEW MEXICO	5	--	15	3
COLORADO	4	2	18	2	NEW YORK	31	5	11	3
CONNECTICUT	3	1	22	3	NORTH CAROLINA	18	7	57	7
DELAWARE	--	--	--	--	NORTH DAKOTA	3	--	1	--
DISTRICT/COLUMBIA	2	--	7	2	OHIO	253	45	241	76
FLORIDA	48	11	109	29	OKLAHOMA	6	3	11	5
GEORGIA	19	7	75	11	OREGON	--	1	20	--
GUAM	--	--	1	--	PENNSYLVANIA	33	5	20	3
HAWAII	--	--	8	2	PUERTO RICO	1	--	--	--
IDAHO	1	--	3	--	RHODE ISLAND	1	--	6	--
ILLINOIS	53	15	81	25	SOUTH CAROLINA	11	12	32	4
INDIANA	123	45	405	133	SOUTH DAKOTA	5	--	2	--
IOWA	6	1	2	1	TENNESSEE	100	40	191	44
KANSAS	8	2	7	1	TEXAS	32	17	76	16
LOUISIANA	7	3	14	4	UTAH	3	--	5	1
MAINE	1	1	9	1	VERMONT	--	--	1	--
MARYLAND	11	--	14	4	VIRGIN ISLANDS	--	--	2	--
MASSACHUSETTS	15	--	8	2	VIRGINIA	37	11	53	14
MICHIGAN	26	3	44	8	WASHINGTON	3	1	10	4
MINNESOTA	10	1	2	1	WEST VIRGINIA	45	41	73	12
MISSISSIPPI	6	5	9	1	WISCONSIN	10	2	10	4
MISSOURI	30	11	39	6	WYOMING	--	--	2	1
MONTANA	1	--	3	1	OUT-OF-COUNTRY	11	--	2	--
TOTALS						1,051	296	1,828	451

Licensure Statistics FY 91-96



(Continued)
 Licensure Statistics
 FY91-96

