

COMMONWEALTH OF KENTUCKY
BOARD OF NURSING



Annual Report
1993-1994

PRINTED ON RECYCLED PAPER



KENTUCKY BOARD OF NURSING

329-7000

312 Whittington Parkway, Suite 300
Louisville, Kentucky 40222-5172

BRERETON C. JONES
GOVERNOR

October 17, 1994

The Honorable Brereton C. Jones
Office of the Governor
Commonwealth of Kentucky
State Capitol Building
Frankfort, KY 40601

Dear Governor Jones:

The Board and staff of the Kentucky Board of Nursing are pleased to submit the Annual Report for Fiscal Year 1993-94.

The following pages reflect the intense work of the Board during the past year. We are appreciative of the support and assistance provided by you and your staff, as we strive to assure that safe and effective nursing care is provided by nurses for the citizens of the Commonwealth.

Very sincerely yours,

PATRICIA B. BURGE, MSN, RN
PRESIDENT

A handwritten signature in cursive script that reads "Sharon M. Weisenbeck".

By: Sharon M. Weisenbeck, MS, RN
Executive Director

dc

ANNUAL REPORT

1993-1994



KENTUCKY BOARD OF NURSING

312 Whittington Pky, Ste 300
Louisville, KY 40222-5172
(502) 329-7000

Board Members

Roberta Scherer, RN
President
Ashland, KY

Patricia Burge, RN
Vice President
Louisville, KY

Sandra Thornton, LPN
Secretary
Villa Hills, KY

Theresa Sue Milburn, RN
Financial Officer
Danville, KY

Kathleen Bellinger, RN
Louisville, KY

Hazel Chappell, RN
Lexington, KY

Debra Finneran, RN
Prospect, KY

Karen Gee, LPN
Frankfort, KY

Melda Sue Logan, RN
Jeff, KY

Diane Payne, Citizen-at-Large
Lexington, KY

Ruth Ann Steele, LPN
LaGrange, KY

Linda Thomas, RN
Hanson, KY

Anne Willis, RN
Louisville, KY

Board Meetings

August 12-13, 1993
Regular Meeting

September 15, 1993
Advisory Council

October 14-15, 1993
Regular Meeting

December 9-10, 1993
Regular Meeting

February 17-18, 1994
Regular Meeting

April 21-22, 1994
Regular Meeting

June 23-24, 1994
Annual Meeting

PREPARED BY STAFF OF THE
KENTUCKY BOARD OF NURSING
OCTOBER 1994

DESIGN AND LAYOUT:
DARLENE CHILTON
CAROL MCGUIRE

COST OF PRINTING PAID FROM STATE FUNDS

KENTUCKY BOARD OF NURSING

	PAGE
Letter of Transmittal	1
Title Page	3
Table of Contents	5
Statement of Philosophy	7
Kentucky Nursing Laws	8
Kentucky Administrative Regulations	9
Long Range Plan 1993-1997	11-12
Strategic Plan	13-16
Composition, Structures & Operations	
Board Activities	17
Organizational Charts	
Program	18
Staff	19
Councils/Committees/Panels	
Advisory Council	20
Advanced Registered Nurse Practice Council	20
Nursing Incentive Scholarship Fund Committee	20
Practice Committee	21
Education Committee	21
Study & Planning Committee	21
Credentials Review Panel	21
<i>Communique'</i> Editorial Panel	21
Board Appointed Representatives	22
Financial Operations	23
Board Administrative Programs	
Continuing Education	25-28
Investigation & Disciplinary Action	29
Nursing Practice	30
Nursing Incentive Scholarship Fund	31
Prelicensure Programs of Nursing & NCLEX Using Cat	32-34
Licensure & Registration	
Kentucky Nurse Licensees	35-38
Licensure By Endorsement	39
Comparative Summaries FY 89-94	40-42
ARNP Registrations	43-44

Table of Contents

Board of Nursing Statement of Philosophy

It is the philosophy of the Kentucky Board of Nursing that the regulation of the practice of nursing shall achieve public protection by ensuring the competency of licensees who provide nursing care. To that end, the regulation of nursing should be responsive to the changing health application of knowledge, skills, and behavior to meet those needs and priorities. As public protection is the essential role of the Board, the public should have a voice in the action taken to promote its protection.

Licensure establishes an essential level of competency, and indicates that nurses have a common core of knowledge. As such, the purpose of licensure is to set standards for practice and education of individuals in order to protect the public from dishonest and incompetent practitioners. These standards are established in the *Kentucky Nursing Laws* and its attendant administrative regulations. Nursing practice and behavior inconsistent with these standards should lead to disciplinary action.

Critical elements of the regulation of nursing practice include a coherent, generally acceptable definition of nursing, as well as definitions of professional scope and accountability. These definitions should make explicit that the nurse is responsible and accountable for the practice of nursing according to individual preparation and experience, with nursing auxiliaries assisting under prescribed conditions. Further, the licensed nurse is responsible and accountable for continued professional learning throughout her/his career continuum.

Essential components of the regulation of prelicensure nursing education include sufficient, qualified faculty and appropriate program curricula and clinical practice laboratories. The curricula should reflect the activities, functions, duties, and responsibilities of the practicing nurse. The clinical practice laboratories should allow prelicensure students opportunities to both generate new knowledge and demonstrate their practice abilities.

As the standards governing nursing practice, continuing education, and prelicensure education are established through the legislative process, the Board has a responsibility to maintain ongoing communication with the legislative branch of government. Concurrently, the complex and dynamic changes occurring in the health care delivery system require that effective communication be maintained with licensees and with local, state and national nursing organizations, health care providers and agencies, governmental units, and nursing education programs.

In summary, the Kentucky Board of Nursing believes that the protection of the public can best be accomplished through ensuring the competency of licensees who provide nursing care, and by establishing standards that allow for the fullest development of nursing practice, commensurate with its potential social contribution.

Adopted: August 1990

Kentucky Nursing Laws

The *Kentucky Nursing Laws* are contained in Kentucky Revised Statutes Chapter 314. During its 1994 session, the General Assembly enacted several revisions to the laws, as follows.

Kentucky Revised Statutes Chapter 314

- .011 Definition of "limited license" deleted for compliance with the American with Disabilities Act.
- .021 Language added to require that nurses practice with reasonable skill and safety.
- .025 Adds graduate nursing education to preference categories for Nursing Incentive Scholarship Fund awards.
- .027 Adds nursing schools as participating sponsors for the Nursing Incentive Scholarship Fund awards.
- .031 Adds provision for mandatory reporting of unfit or incompetent practice to the Board.
- .041 Physical and mental health requirements for RNs deleted for compliance with the Americans with Disabilities Act. Also conforms language to new licensure examination methodology.
- .042 As above, for ARNPs.
- .051 As above, for LPNs.
- .091 Adds provision clarifying when action can be taken against a licensee based on disciplinary action in another licensure jurisdiction.

Language added concerning disciplinary action by the Board in the case of convictions for several criminal offenses involving sexual contact with a patient.
- .101 Changes the length of time for which a temporary work permit may be issued to conform with new computerized adaptive testing methodology.
- .131 Allows the Board to expunge certain disciplinary records.

Language added concerning the development of guidelines by the Board to deal with complaints of sexual misconduct by a nurse and with training of Board members and investigators on sexual misconduct.
- .193 Corrects the name of the Nurse Practice Council to Advanced Registered Nurse Practice Council.

KRS 216.000

Makes it a criminal act for a health care professional to knowingly by force or duress cause another to commit or attempt to commit suicide or to assist another person to commit or attempt to commit suicide.

KRS 422A.0507

Adds RNs and ARNPs practicing psychiatric/mental health nursing to psychotherapist definition in the Kentucky Evidence Code.

Kentucky Administrative Regulations are enacted to operationalize statutory language and carry force and effect of law. Several regulations were revised during FY 93-94 as indicated by the effective date.

<u>201 Kentucky Administrative Regulation 20:</u>		<u>Effective Date</u>
.056	Advanced Registered Nurse Practitioner Registration	8/93
.057	Scope & Standards of Practice of Advanced Registered Nurse Practitioners	8/93
.070	Licensure by Examination	3/94
.085	Licensure Periods	3/94
.090	Temporary Work Permit	3/94
.095	Inactive Nurse Licensure Status	3/94
.110	Licensure by Endorsement	2/93
.161	Investigation & Disposition of Complaints	8/93
.162	Procedures for Disciplinary Hearings Pursuant to KRS 314.091	8/93
.200	Definitions for Mandatory Continuing Education	7/92
.215	Contact Hours	8/93 3/96
.220	Provider Approval	7/92
.225	Reinstatement of License	2/93
.230	Renewal of Licenses	2/93
.235	The Prevention of Transmission of HIV & HBV by Nurses	9/93
.240	Fees for Applications & for Services	3/94
.250	Definitions for Registered & Practical Nurse Prelicensure Programs of Nursing ...	2/93
.260	Organization & Administration Standards for Prelicensure Programs of Nursing ..	8/93
.270	Programs of Nursing Surveys	11/87
.280	Standards for Prelicensure Registered Nurse & Practical Nurse Programs	6/85
.290	Standards for Prelicensure Registered Nurse & Practical Nurse Extension Programs ...	11/87
.300	Standards for Prelicensure Experimental Programs of Nursing	6/85
.310	Faculty for Prelicensure Registered Nurse & Practical Nurse Programs	2/93
.320	Standards for Curriculum of Prelicensure Registered Nurse Programs	11/87
.330	Standards for Curriculum of Prelicensure Practical Nurse Programs	3/89
.340	Students in Prelicensure Registered Nurse & Practical Nurse Programs	6/85
.350	Education Facilities & Resources for Prelicensure Registered Nurse & Practical Nurse Programs	6/85
.360	Evaluation of Prelicensure Registered Nurse & Practical Nurse Programs	11/87
.370	Applications for Licensure & Registration	11/87
.380	Standards for Refresher Course Approval	11/87
.390	Nursing Incentive Scholarship Fund	10/93
.400	Delegation of Nursing Tasks to Unlicensed Persons	1/93

Kentucky Administrative Regulations

MISSION

The mission of the Commonwealth of Kentucky Board of Nursing is to enforce public policy related to the safe and effective practice of nursing in the interest of public welfare. As a regulatory agency of state government, the Board of Nursing accomplishes this mission as authorized by *Kentucky Revised Statutes* and attendant administrative regulations. In accomplishing its aims, the Board of Nursing licenses and registers qualified nurses and advanced registered nurse practitioners, approves providerships for mandatory continuing education and prelicensure programs of nursing, enforces the *Kentucky Nursing Laws*, and issues nursing practice opinions. In addition, the Board of Nursing cooperates with individuals, groups, organizations, and other state and national entities by the provision of appropriate services to promote safe and effective nursing care for the citizens of the Commonwealth.

GOALS AND ASSUMPTIONS

GOAL I: *Ensure that persons licensed as nurses and registered as advanced registered nurse practitioners in Kentucky are qualified according to requirements to provide the citizens of the Commonwealth with safe and effective nursing care.*

ASSUMPTIONS:

1. Method of licensure examination administration will change.
2. More practice complaints will be reported.
3. Registered nursing practice will expand to include current scopes of advanced nursing practice.
4. Emphasis on determination of competency will continue.
5. Questioning of mandatory continuing education for validation of competency will increase.
6. Changes in educational requirements for licensure will occur.
7. Scope of nursing practice will expand for licensees.
8. Nursing curricula will change to reflect non-traditional delivery systems.
9. Prelicensure educational programs will require an internship/preceptorship component.
10. There will be an increased societal interest in the arena of infectious diseases.
11. The role of regulatory agencies will be affected by the 1991 Americans With Disabilities Act.
12. Geopolitical events will dictate new approaches to the credentialing of foreign candidates for professional and occupational licensure.

GOAL II: *Optimize human and fiscal resources to improve services and control costs.*

ASSUMPTIONS:

1. Automation will enhance Board operation.
2. Nurse manpower data will be valued and used.
3. An increase in fees or identification of other sources of revenue to maintain current level of services will be needed.

LONG RANGE PLAN 1993-1997 (Continued)

4. Difficulty for nurses and consumers to serve on KBN relative to time, energy, and conflicts will occur.
5. Changes in educational requirements for licensure will have ramifications for Board composition.

GOAL III: *Assert leadership in state government and the public arena in the regulation of nurses, nursing education, and nursing practice to promote the delivery of safe and effective nursing services.*

ASSUMPTIONS:

1. Shortages of nursing manpower will intensify.
2. Qualified students will select other professions.
3. A resurgence of monitoring KBN activities by other groups will occur.
4. The need for education regarding issues surrounding the regulation of nursing will continue.
5. Kentucky nurses will gain national prominence.
6. More nurses will be in independent practice.
7. The number of nurses employed outside of hospitals will increase.
8. Increase in non-licensed persons performing nursing duties will continue.
9. Efforts to implement institutional licensure will resurface.
10. Kentucky Legislature will consider reorganization of state government.
11. Inaccessibility of health care for citizens will jeopardize public safety.
12. Corporate control of health care delivery systems will expand.
13. The expansion of interdisciplinary approaches to health care delivery will impact and change the role and practice of nurse licensees.

Approved: 6/89

Revised: 6/92

Strategic Plan 1993-1997

GOAL I: Ensure that persons licensed as nurses and registered as advanced registered nurse practitioners in Kentucky are qualified according to requirements to provide the citizens of the Commonwealth with safe and effective nursing care.

STRATEGIC GOALS (3-5 YRS)	STRATEGIC APPROACHES (1-3 YRS)	MAJOR ACTIVITIES 93-94
IA. Promote high quality prelicensure nursing education programs.	IA1. Promulgate administrative regulations for prelicensure program of nursing (PON) approval.	IA1. Revised 201 KAR 20:260; adopted guidelines for calculating FY NCLEX pass rates with 4/94 implementation of computerized adaptive testing (CAT).
	IA2. Study prelicensure educational requirements for eligibility for licensure as a nurse.	IA2. Granted continuing approval to 52 prelicensure PONs; conducted 5 site visits; reviewed/accepted 53 follow up reports; reviewed 349 faculty appointments.
	IA3. Assist prelicensure PON education with compliance with administrative regulations.	IA3. Added member to Education Committee so that both ADN and BSN programs had representatives. Monitored NCLEX pass rates; issued letters of commendation for 100% pass rate to 4 PONs; issued letters of concern or warning for failing to maintain 85% pass rate to 5 PONs; reviewed/approved curriculum changes from 20 PONs; accepted 1 application to establish new ADN PON.
IB. Assure high quality mandatory continuing education (CE) for nurses.	IB1. Promulgate administrative regulations for mandatory CE for nurses.	IB1. Revised 201 KAR 20:215 and 220. Repealed 201 KAR 20:205 and 210.
	IB2. Determine comparability of standards of other organizations with those of the Board administrative regulations for mandatory CE.	IB2. Denied recognition of CE comparability to oncology nursing certification or recertification program.
	IB3. Assist approved providers with compliance with administrative regulations for mandatory CE.	IB3. Approved 117 provider renewal applications and 5 new CE providers; reviewed 64 CE offerings for compliance with regulatory requirements; modified licensure by endorsement process to accommodate mandatory AIDS education requirement.
IC. Determine competency of applicants for licensure and registration.	IC1. Investigate methods for determining competence of applicants/licensees/registrants.	IC1. Examined specialty certification requirements for comparability to CE standards.
	IC2. Audit licensees for compliance with CE (including AIDS education) requirements for renewal of licensure.	IC2. Randomly audited LPN population renewing on active status by 10/31/93; 97% compliance rate.
	IC3. Monitor impact of limited licensure/disability status.	IC3. Conducted retrospective analysis; researched implications of ADA; revised statutory language to repeal Limited Licensure Handicap (LLH) licensure category.
	IC4. Maintain sound regulatory requirements for licensure and registration.	IC4. Revised 201 KAR 20:056, 057, 070, 085, 090, 095, 161, 162, 215, 235, 240, 260, and 370.

STRATEGIC GOALS (3-5 YRS)	STRATEGIC APPROACHES (1-3 YRS)	MAJOR ACTIVITIES 93-94
ID. Enforce mandatory licensure of individuals practicing as nurses.	ID1. Examine mechanisms for monitoring licensure status.	ID1. Initiated planning for installation of Licensure Verification System (IVR).
	ID2. Cooperate with employers, regulatory and other official agencies regarding licensure of nurses.	ID2. Verified >5700 licensed nurses to >900 inquirers; provided workshops and video conferences regarding CAT implementation.
IE. Enhance disciplinary action program to safeguard the public and to ensure due process rights of applicants/ licensees/registrants.	IE1. Study statutes and administrative regulations regarding investigation and disciplinary activities.	IE1. <i>Kentucky Nursing Laws</i> revised by General Assembly: KRS Chapter 314.011, 021, 031, 041, 042, 051, 091, and 131. Revised guidelines.
	IE2. Analyze data on disciplinary actions and limitation of licenses.	IE2. Initiated disciplinary action research study. Discontinued LLH after analysis.
	IE3. Analyze types of complaints reported for implications for nursing practice.	IE3. Ongoing analysis; communicated concern regarding rise in practice related complaints to education programs.
	IE4. Maintain a sound investigation and disciplinary action program.	IE4. Approved removal of 53 licenses from probation, 94 Agreed Orders, 118 Proposed Decisions, and 284 Consent Decrees. Held 546 investigative/probationary meetings.

GOAL II: Optimize human and fiscal resources to improve services and control costs.

STRATEGIC GOALS (3-5 YRS)	STRATEGIC APPROACHES (1-3 YRS)	MAJOR ACTIVITIES 93-94
IIA. Ensure optimal development of human resources.	IIA1. Study organization of Board agency and operation.	IIA1. Reviewed and revised staff organizational chart, effective October 93.
	IIA2. Provide orientation and development program for members of the Board, councils and committees.	IIA2. Refined programs; held 2 orientation sessions; conducted 2 general discussion sessions; revised/updated Board member manual.
	IIA3. Provide orientation and development program for staff.	IIA3. Reviewed program; planned staff needs assessment; attended state/national meetings and GSC classes.
	IIA4. Implement state affirmative action plan.	IIA4. Goals exceeded; ongoing implementation.
	IIA5. Evaluate effectiveness of master staffing plan to provide needed services and revise as needed.	IIA5. Added 1 nurse investigator; reclassified staff positions as needed; utilized agency temporaries.
	IIA6. Maintain recognition program for service as volunteer committee and council, staff and Board members.	IIA6. Recognized 6 staff for service and 12 volunteers for committee service.
IIB. Assure sound fiscal planning for agency operation.	IIB1. Maintain fiscal soundness and stability.	IIB1. Adopted 94-96 Biennial Budget for submission to Governor's Office for Policy and Management and the Legislative Research Commission.
	IIB2. Monitor fiscal effectiveness of agency operation.	IIB2. Ended fiscal year within 10% of budgeted projections.

STRATEGIC GOALS (3-5 YRS)	STRATEGIC APPROACHES (1-3 YRS)	MAJOR ACTIVITIES 93-94
IIC. Provide facilities to enhance the Board and agency operation.	IIC1. Evaluate environmental needs for the Board and agency operation. IIC2. Maintain comprehensive plan for office automation. IIC3. Evaluate effectiveness of master plan for office automation.	IIC1. Established smoke-free office environment. IIC2. Submitted Information Resources Plan to DIS. IIC3. Capital purchases of \$40,000 to implement plan.
IID. Maximize effectiveness of operational systems for implementing statutory mandates.	IID1. Revise recordkeeping system to eliminate duplication. IID2. Review operational systems for implementing policy.	IID1. Revised travel reimbursement process to reduce duplication. IID2. Revised licensure process to accommodate CAT and mandatory AIDS education.
IIE. Strengthen planning processes for agency effectiveness.	IIE1. Utilize established planning process for agency. IIE2. Evaluate effectiveness of total agency operation.	IIE1. Reviewed KBN Strategic Plan used as basis for agency planning. IIE2. Responded to complaints and inquiries; submitted reports as required.
GOAL III: Assert leadership in state government and the public arena in the regulation of nurses, nursing education, and nursing practice to promote the delivery of safe and effective nursing services.		
STRATEGIC GOALS (3-5 YRS)	STRATEGIC APPROACHES (1-3 YRS)	MAJOR ACTIVITIES 93-94
IIIA. Support sound legislation for the regulation of nurses, nursing education and nursing practice.	IIIA1. Study provisions of <i>Kentucky Nursing Laws</i> and related statutes for the purpose of needed revisions. IIIA2. Plan strategy for passage of statutory changes as needed. IIIA3. Monitor regulatory proposals and enactments.	IIIA1. Recommended revisions of KRS Chapter 314 to accommodate ADA; repealed LLH. IIIA2. Solicited sponsors for proposed statutory revisions. IIIA3. Monitored 1994 General Assembly session and provided testimony on relevant issues as requested.
IIIB. Participate as a Member Board of the National Council of State Boards of Nursing (NCSBN).	IIIB1. Participate in activities to fulfill membership responsibilities and as requested by NCSBN. IIIB2. Promote involvement of volunteers and selected individuals for the various offices, committees and work groups of NCSBN. IIIB3. Provide representation for NCSBN meetings and assemblies.	IIIB1. Modified contract with NCSBN to provide for implementation of CAT. IIIB2. 12 KBN representatives served on NCSBN committees, panels, etc. IIIB3. 2 delegates attended Area III meeting and annual meeting of Delegate Assembly.
IIIC. Interpret and promote integrity of legal scope of nursing practice.	IIIC1. Study issues involving the legal scope of nursing practice. IIIC2. Update advisory opinion statements issued by the Board.	IIIC1. Identified need for RN availability to supervise UAP administering medication in group home settings. Reviewed and provided responses to 22 individual practice related issues. IIIC2. Reviewed, developed or updated 7 advisory opinion statements.

STRATEGIC GOALS (3-5 YRS)	STRATEGIC APPROACHES (1-3 YRS)	MAJOR ACTIVITIES 93-94
IID. Cooperate with individuals, groups and organizations to address nursing issues and concerns.	<p>IIID1. Enhance communication strategies with appropriate individuals and groups.</p> <p>IIID2. Strengthen relationship with programs for impaired nurses.</p> <p>IIID3. Support research relevant to the regulation of nurses, nursing education and nursing practice.</p> <p>IIID4. Develop innovative services for the promotion of public protection.</p> <p>IIID5. Increase the public and affected parties' understanding of the regulation of nursing and the contribution of nursing to society.</p>	<p>IIID1. Produced 3 interactive video conferences regarding CAT; sponsored annual conference with 300 attendees.</p> <p>IIID2. Worked with KNA on Impaired Nurse Task Force.</p> <p>IIID3. Participated in 2 research studies regarding impaired nurses; completed 60 survey instruments.</p> <p>IIID4. Initiated planning for installation of IVR.</p> <p>IIID5. Provided 30 speakers to related external agencies and organizations.</p>
IIIE. Disseminate information on the regulation of nurses and advanced registered nurse practitioners, and nursing education and practice.	<p>IIIE1. Evaluate information needed by applicants/licensees/registrants/approved entities for compliance with regulations.</p> <p>IIIE2. Enhance communication strategies with individuals and entities affected by regulation.</p>	<p>IIIE1. Published 3 issues of <i>Communique</i> (circulation 60,000 per issue); published PON and CE provider updates (circulation 533).</p> <p>IIIE2. Produced 3 video teleconferences regarding CAT; sponsored annual conference with 300 attendees; answered >50,000 phone inquiries; mailed >13,000 pieces of correspondence and >3,000 licensure applications.</p>
IIIF. Establish a comprehensive data base of prelicensure and licensure populations.	<p>IIIF1. Study existing system for collection and maintenance of data.</p> <p>IIIF2. Cooperate with individuals and local/state/national organizations and agencies involved in data collection and research.</p>	<p>IIIF1. Redesigned internal processing of licensure by examination applications.</p> <p>IIIF2. Provided data to Kentucky Council on Higher Education (performance of PON grads on licensure exam) and Cabinet for Human Resources (AIDS education compliance).</p>
IIIG. Participate in activities aimed at sound health care reforms.	<p>IIIG1. Study proposals on health care reform.</p> <p>IIIG2. Provide data as needed to requesting parties.</p> <p>IIIG3. Provide representation as needed/requested.</p>	<p>IIIG1. Monitored 1994 General Assembly actions and federal proposals on health care reform.</p> <p>IIIG2. Provided data/labels for all inquiries as possible; produced licensee names and addresses as requested.</p> <p>IIIG3. Appointed 34 Board and staff members to liaison role with external agencies.</p>

Board Activities

OVERVIEW

All meetings of the Board and its committees and councils were held in open session as required by the open meetings law.

The commitment of the members of the Board and the dedication of its staff continued in unabated fashion. Appreciation for this service by Board staff and members was expressed through the recognition programs of the agency and executive branch of state government.

Retiring Board members Roberta Scherer, RN; Theresa Sue Milburn, RN; and Ruth Ann Steele, LPN, were honored and thanked for their substantial contributions to the Board.

Beverly Owen, Programmer Analyst, was awarded a pin in recognition of 20 years of service. The following staff were recipients of the Employee of the Quarter Recognition Program: Sandra Johanson, Nurse Investigator; Alta Haunsz, Consumer Protection Branch Manager; Beverly Owen, Programmer Analyst; and Carol McGuire, Assistant Executive Director for Education.

COMMITTEE/COUNCIL MEETINGS

1993

September 15 Orientation/Advisory Council
September 16 Education/Practice Cmtes
September 17 Study & Planning Cmte
November 11 Education/Practice Cmtes
November 12 Study & Planning Cmte

1994

January 13 Education/Practice Cmtes
January 14 Study & Planning Cmte
March 17 Education/Practice Cmtes
March 18 Study & Planning Cmte
May 19 Education/Practice Cmtes
May 20 Study & Planning Cmte

BOARD OFFICERS

Elected June 1994

President: Patricia Burge
Vice President: M. Sue Logan
Secretary: Sandra Thornton
Financial Officer: Kathleen Bellinger

Immediate Past

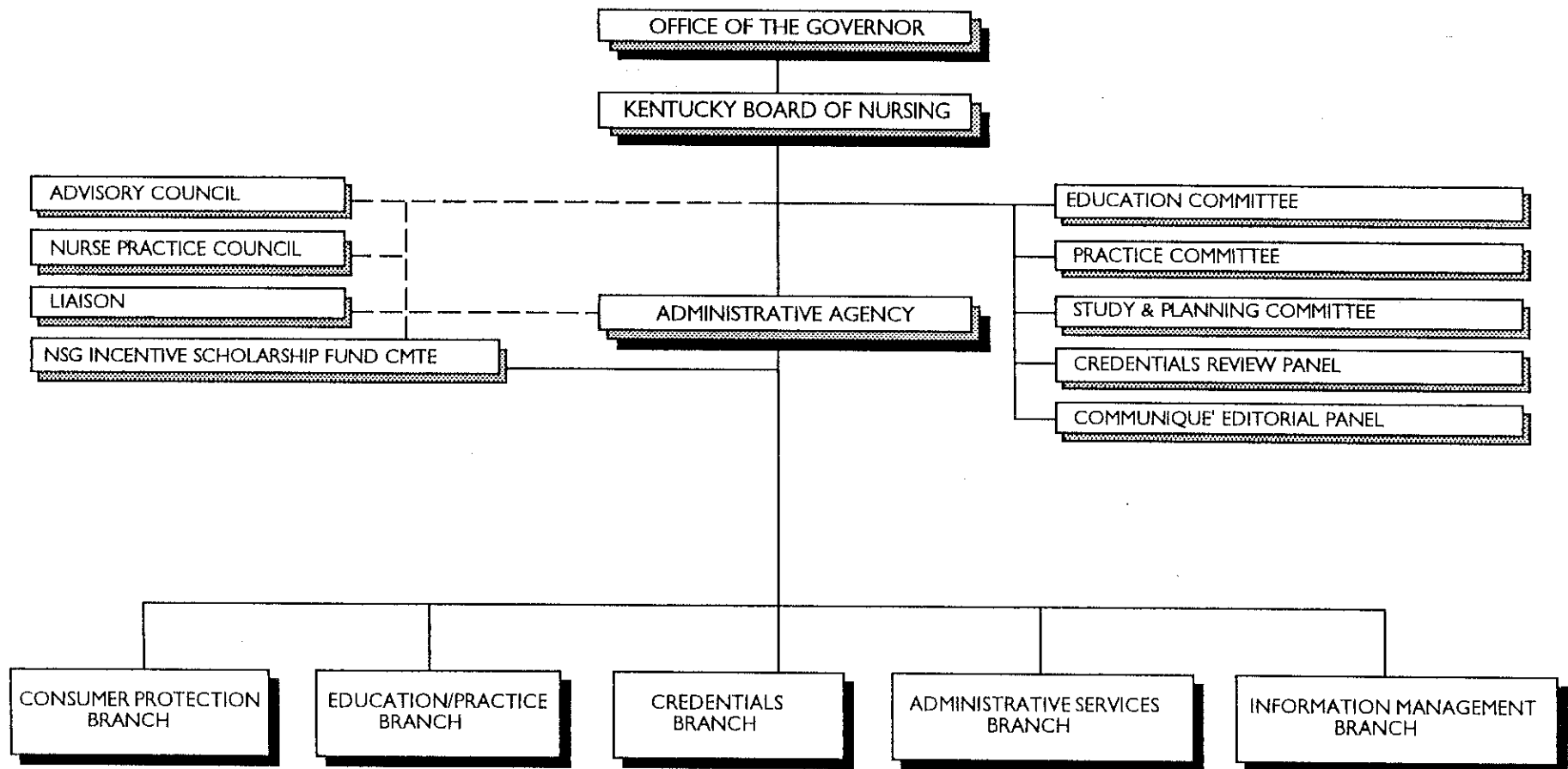
Roberta Scherer
Patricia Burge
Sandra Thornton
Sue Milburn

Past

Susan Hockenberger
Roberta Scherer
Karen Gee
Sue Milburn

REGULATION OF NURSES AND NURSING EDUCATION AND PRACTICE

ORGANIZATION CHART (PROGRAM)



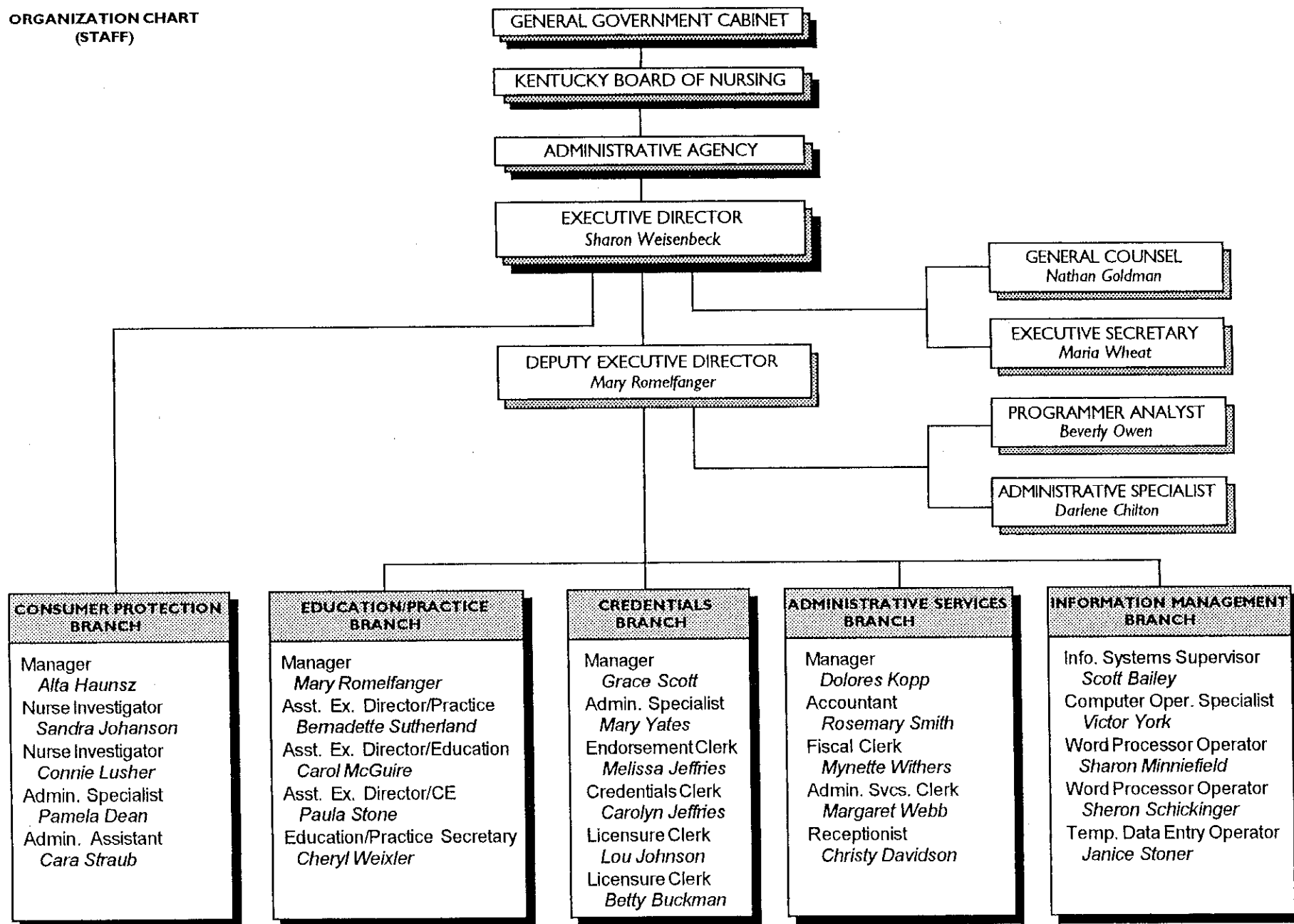
STATE GOVERNMENT STRUCTURE:

Cabinet
Department
Division
Branch
Section
Unit

Legend: _____ Direct Relationship
 - - - - - Advisory Relationship

(Board of Nursing is placed under the General Government Cabinet)

**ORGANIZATION CHART
(STAFF)**



Councils/Committees/Panels

ADVISORY COUNCIL

Membership

Organization

Laura Stone, RPh	Kentucky Pharmacy Association
M. Susan Jones, RN	Kentucky Nurses Association
William K. Massie, MD	Kentucky Hospital Association
Elizabeth A. Fultz, LPN	Kentucky State Association of Licensed Practical Nurses
William B. Monnig, MD	Kentucky Medical Association
Brenda Williams, RN	Kentucky Association of Health Care Facilities
Ben E. Baldwin, DMD	Kentucky Dental Association
Kathleen Mary Bohan, SCN	Kentucky Association of Not-for-Profit Homes & Services for the Aging

The Governor appoints an **Advisory Council** to the board from nominees submitted by health related organizations. The council functions in an advisory capacity only as a constructive force in establishing and maintaining standards of nurse competency and licensure regulations in the interest of public protection.

Related organizations nominate representatives for membership on the **Advanced Registered Nurse Practice Council**, as an advisory body to the Board of Nursing. The council advises and recommends practice standards regarding the performance of acts relative to nurse anesthesia, nurse-midwifery, nurse practitioner and clinical nurse specialist practice.

ADVANCED REGISTERED NURSE PRACTICE COUNCIL

Membership

Designation/Organization

Sandra Tunajek, ARNP	Advanced Registered Nurse Practitioner - Anesthetist
Sheila Ward, ARNP	Advanced Registered Nurse Practitioner - Midwife
Pamela L. King, ARNP	Advanced Registered Nurse Practitioner - Practitioner
Kathleen Bellinger, RN	Kentucky Board of Nursing
Melda Sue Logan, RN	Kentucky Board of Nursing
Preston P. Nunnelle, MD	Kentucky Board of Medical Licensure
Frank M. Gaines, Jr., MD	Kentucky Board of Medical Licensure
Ralph E. Bouvette, RPh	Kentucky Board of Pharmacy
John D. Noonan, MD	Kentucky Medical Association
Sally Baxter, RN	Kentucky Association of Health Care Facilities
Teresa Mingea, RN	Kentucky Hospital Association

NURSING INCENTIVE SCHOLARSHIP FUND COMMITTEE

Membership

Designation/Organization

Theresa Sue Milburn, RN	Kentucky Board of Nursing
Marjorie Perrin, RN	Registered Nurses
Ann Martin, LPN	Licensed Practical Nurses
Ellen Bailey, ARNP	Kentucky Primary Care Association
Sr. Mary Jeannette Wess	Kentucky Hospital Association
Betty Parrish, RN	Kentucky Association of Health Care Facilities

The **Nursing Incentive Scholarship Fund (NISF)** was created in 1990 to increase the number of licensed nurses in medically underserved areas of the state and to decrease the number of vacant licensed nurse positions in all service sectors. The enabling statutory language was revised in 1994 to include registered nurses pursuing a graduate degree.

PRACTICE COMMITTEE

Hazel Chappell, RN, Chairperson
Patricia Burge, RN
Debra Finneran, RN
Karen Gee, LPN
Anne Willis, RN
Gail Carpenter, RN, RN Educator
Mary Kleber, RN, LPN Educator
Sylvia Keller, LPN, KSALPN Representative
Linda Wyatt, RN, KNA Representative

The **Practice Committee** considers those matters related to the interpretation of the legal scope of nursing practice as defined in *Kentucky Revised Statutes* Chapter 314 and Board of Nursing administrative regulations. Committee deliberations may include review of other relevant statutes and regulations as necessary.

The **Education Committee** considers those matters related to mandatory continuing education and prelicensure nursing education in the Commonwealth.

EDUCATION COMMITTEE

Melda Sue Logan, RN, Chairperson
Theresa Sue Milburn, RN
Ruth Ann Steele, LPN
Linda Thomas, RN
Rebecca Forrest, RN, LPN Prelicensure Education
Patsy Turner, RN, ADN Prelicensure Education
Linda Salyer, RN, BSN Prelicensure Education
Doris Ball, RN, LPN Continuing Education
Beverly Bone, RN, RN Continuing Education

STUDY & PLANNING COMMITTEE

Patricia Burge, RN, Chairperson
Kathleen Bellinger, RN
Hazel Chappell, RN
Karen Gee, LPN
Melda Sue Logan, RN
Theresa Sue Milburn, RN
Diane Payne, Citizen-at-Large
Sandra Thornton, LPN Alternate

The **Study and Planning Committee** considers those matters related to the needs of the Board and its operation for enhancement of monitoring statutory and regulatory compliance and in planning for the predictable future.

The **Credentials Review Panel** considers those matters related to licensure and registration credentials and disciplinary investigation and action not otherwise covered by guidelines set by the Board of Nursing and applicable laws.

CREDENTIALS REVIEW PANEL

Roberta Scherer, RN, Chairperson
Sandra Thornton, LPN

COMMUNIQUE' EDITORIAL PANEL

Diane Payne, Citizen-at-Large, Chairperson
Sue Milburn, RN
Sandra Thornton, LPN

The **Communique' Editorial Panel** considers those matters related to planning for the preparation and publication of the official Board of Nursing newsletter.

Board Appointed Representatives

ADVANCED REGISTERED NURSE PRACTITIONER
 PRESCRIBING PRIVILEGES COALITION
Bernadette Sutherland
Nathan Goldman

CABINET FOR HUMAN RESOURCES
Ky Board of Family Health Care Providers
Annette Castle

COMMISSION ON GRADUATES OF
 FOREIGN NURSING SCHOOLS
Credentials Committee
Sharon Weisenbeck

COUNCIL OF STATE GOVERNMENTS
Health Policy Task Force
Mary Romelfanger

EMERGENCY MEDICAL SERVICES
 ADVISORY COMMITTEE
Prehospital Nursing Working Group
Bernadette Sutherland

GOVERNOR'S COALITION
Kentuckians for Health Care Reform
Sharon M. Weisenbeck

JEFFERSON COUNTY NURSE DAY
 RECOGNITION COMMITTEE
Sharon Weisenbeck

KENTUCKY BOARD OF MEDICAL LICENSURE
Physician Assistant Advisory Council
Ellen Bailey

KENTUCKY COALITION ON THE
 AVAILABILITY OF NURSES
Mary Romelfanger

KENTUCKY COUNCIL OF
 ASSOCIATE DEGREE NURSING
Carol McGuire

KENTUCKY COUNCIL OF PRACTICAL NURSING
Ruth Ann Steele

KENTUCKY NURSES ASSOCIATION
Board of Directors
Roberta Scherer

Cabinet on Education
Paula Stone

Cabinet on Nursing Practice
Bernadette Sutherland

KENTUCKY NURSES ASSOCIATION (Cont.)
Nurse Day Committee
Sandra Johanson

Strategic Planning Committee
Sharon Weisenbeck

KENTUCKY NURSING CONTINUING
 EDUCATION NETWORK
Sue Milburn

KENTUCKY STATE ASSOCIATION OF
 LICENSED PRACTICAL NURSES
Karen Gee

NATIONAL COUNCIL OF STATE BOARDS OF NURSING
Delegate Representatives
Roberta Scherer
Sharon Weisenbeck

Alternate Delegate Representatives
Kathleen Bellinger
Mary Romelfanger

**Nurse Aide Competency Evaluation
 Program Committee**
Sharon Weisenbeck, Chairperson

Administration of Examination Committee
Alta Haunsz

Examination Committee
Carol McGuire

Disciplinary Case Analysis Focus Group
Nathan Goldman

Literature Review Focus Group
Bernadette Sutherland, Chairperson

NATIONAL LEAGUE FOR NURSING
Council for Practice Executive Committee
Bernadette Sutherland

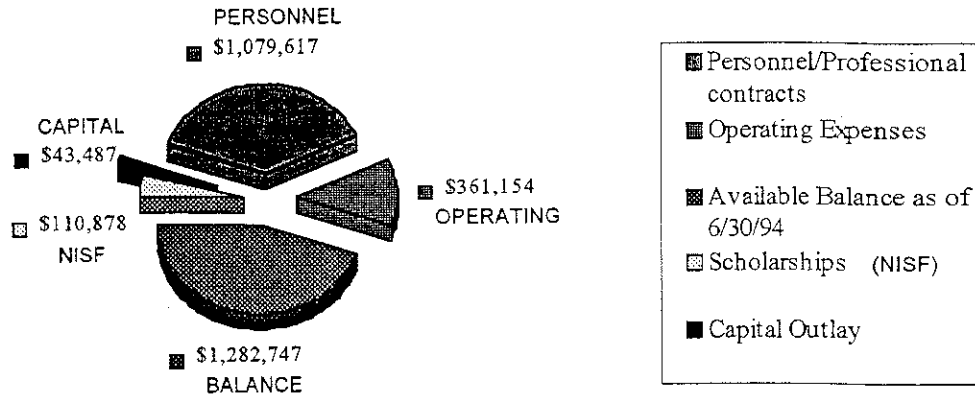
PEER ASSISTANCE COMMITTEE
Bernadette Sutherland
Connie Lusher
Nathan Goldman

ROBERT WOOD JOHNSON
 PRACTICE SIGHTS INITIATIVE
**Data Base Development and Policy
 Strategies Subcommittee**
Mary Romelfanger

Financial Operations

Financial Report

FY 93-94: TOTAL OPERATING FUND = \$2,877,883



The Kentucky Board of Nursing is a fee supported agency. No general revenue tax dollars are expended by the agency. The operating fund for FY 93-94 was \$2,877,883 with expenditures totaling \$1,595,136. The FY 93-94 Financial Report and Fee Schedule are illustrated.

Various Board of Nursing publications and informational material were offered for a nominal fee that covered duplicating costs. Some of the publications available for purchase were the KBN History, *Kentucky Nursing Laws*, KBN Administrative Regulations, KBN Advisory Opinion Statements, and Disciplinary Process and Procedures for Nursing Licensure. A free brochure on continuing education was also available.

FEE SCHEDULE

Licensure/Registration

Application Fees	RN	LPN
Endorsement	\$70	\$70
Reinstatement	70	70
Active License Renewal *	50	50
Inactive License Renewal *	40	40
Examination		
Licensure	70	70
Administration of NCLEX **	35	15
Retake ***	30	30
ARNP Registration	70	
ARNP Reinstatement	70	
ARNP Renewal *	35	
Duplicate License Letter	20	20
Verification to Other States	20	20

Continuing Education Approval Fees

Initial Provider Approval	\$100
Reinstatement of Provider Approval	100
Renewal of Provider Approval *	50
Offering Approval Via Staff Review	35

* Issued for a two-year period
 ** Discontinued 1/94
 *** Effective 12/93

Continuing Education

As a mechanism to promote continuing competency, the *Kentucky Nursing Laws* (KRS 314.073) mandate that licensees earn a minimum of 30 hours of approved nursing continuing education, including at least 2 hours of Kentucky Cabinet for Human Resources (CHR) approved AIDS education (KRS 214.610). The Kentucky Board of Nursing is the Commonwealth agency legally authorized to approve providers of mandatory continuing education.

The post-renewal audit process is used to verify earning of the required 30 contact hours including the 2 hours of CHR approved AIDS education. The random audit requires that those persons selected show documented evidence (certificate of attendance, transcript, grade report, etc.) of approved contact hour earning during the applicable licensure period. Of those licensees randomly selected for the audit process, 97% demonstrated compliance with the CE requirements. Those not complying were referred for disciplinary action.

Board Administrative Programs

APPROVED PROVIDERS OF MANDATORY CONTINUING EDUCATION 1993-94

CATEGORY 1: PROFESSIONAL NURSING ORGANIZATIONS (13)

ILLINOIS:

CHICAGO American Association of Neuroscience Nurses (312) 993-0043
PARK RIDGE American Association of Nurse Anesthetists (708) 692-7050

KENTUCKY:

LEXINGTON Bluegrass A.O.R.N. (606) 278-3436 x 1133
Ky Coalition of Nurse Practitioners & Nurse Midwives (606) 271-0942
Society of Head & Neck Nurses, Lexington Chapter (606) 257-5405

LOUISVILLE AWHONN Kentucky Section (502) 589-1240
American Association of Critical Care Nurses (502) 228-1810
Kentuckiana Association of Operating Room Nurses
Kentucky Association of Nurse Anesthetists (502) 456-5741
Kentucky Nurses Association (502) 637-2546
Louisville Area Assn of Occupational Health Nurses (502) 452-4196 or 0333
Nat'l Assn of Orthopaedic Nurses, River Cities Chapter .. (502) 562-3385

SCOTTSVILLE Ky State Association of Licensed Practical Nurses (502) 622-4206

CATEGORY 2: RELATED NURSING ORGANIZATIONS (2)

KENTUCKY:

LOUISVILLE Kentuckiana Emergency Nurses Association, Inc (502) 634-1239
SOMERSET Eastern Kentucky Neonatal Nurses Association (606) 678-2000

CATEGORY 3: EDUCATIONAL INSTITUTIONS (30)

KENTUCKY:

ASHLAND Ashland Community College (606) 329-2999
BEREA Berea College (606) 986-9341
BOWLING GREEN Western Kentucky University (502) 745-3391
CUMBERLAND Southeast Community College (606) 589-2145
DANVILLE Danville School of Practical Nursing (606) 236-6030
ELIZABETHTOWN Elizabethtown Community College (502) 769-2371
FRANKFORT Kentucky State University (502) 227-5957
GLASGOW Glasgow School for Health Occupations (502) 651-5673

CATEGORY 3: EDUCATIONAL INSTITUTIONS (Continued)

HAZARD	Hazard Community College	(502) 436-5721
HENDERSON	Henderson Community College	(502) 827-1867
HOPKINSVILLE	Hopkinsville Community College	(502) 886-3921
JACKSON	Lees College	(606) 666-7521
LEXINGTON	Central Kentucky State Vocational Technical School	(606) 255-8501
	Lexington Community College	(606) 257-8763
	University of Kentucky, College of Nursing	(606) 233-5237
LOUISVILLE	Bellarmine College	(502) 452-8215
	Jefferson Community College	(502) 584-0181
	Kentucky Health Care Training	(502) 459-2021
	Kentucky Tech - Jefferson State Campus	(502) 588-4275
	Spalding University	(502) 585-9911 x 245
	University of Louisville, School of Nursing	(502) 588-8381
MAYSVILLE	Maysville Community College	(606) 759-7141
MOREHEAD	Morehead State University	(606) 783-2635
MURRAY	Murray State University	(502) 762-2193
PADUCAH	Paducah Community College	(502) 442-6131
PAINTSVILLE	Mayo State Vocational Technical School	(606) 789-5321
RICHMOND	Eastern Kentucky University	(606) 622-2143
SOMERSET	Somerset School of Practical Nursing	(606) 679-4303 or 4304

TENNESSEE:

CLARKSVILLE	Austin Peay State University, Department of Nursing	(615) 648-7710
NASHVILLE	University of Tennessee	(615) 251-1214

CATEGORY 4: HEALTH SERVICE AGENCIES (105)

INDIANA:

NEW ALBANY	Floyd Memorial Hospital	(812) 944-7701
------------------	-------------------------------	----------------

KENTUCKY:

ASHLAND	King's Daughters' Medical Center	(606) 327-4000
	Our Lady of Bellefonte Hospital	(606) 833-3333
BARBOURVILLE	Knox County Hospital	(606) 546-4175
BENTON	Marshall County Hospital	(502) 527-1336
BEREA	Berea Hospital, Inc.	(606) 986-3151
BOWLING GREEN	HCA Greenview Hospital	(502) 781-4330
	Medical Center at Bowling Green	(502) 745-1000
	Mediplex Rehab-Bowling Green	(502) 782-6900
BURKESVILLE	Cumberland County Hospital	(502) 864-2511
CAMPBELLSVILLE	Taylor County Hospital	(502) 465-3561
COLUMBIA	Westlake Cumberland Hospital	(502) 384-4753
CORBIN	Baptist Regional Medical Center	(606) 528-1212
COVINGTON	St. Charles Care Center	(606) 331-3224
CYNTHIANA	Harrison Memorial Hospital	(606) 234-2300
	Wedco District Health Department	(606) 234-8750
DANVILLE	Ephraim McDowell Regional Medical Center	(606) 236-4121
EDGEWOOD	Northern Kentucky Rehabilitation Hospital	(606) 341-2044
	St. Elizabeth Medical Center	(606) 344-2335
ELIZABETHTOWN	Hardin County Memorial Hospital	(502) 737-1212
	Lakeview Rehabilitation Hospital	(502) 769-3100
FLEMINGSBURG	Fleming County Hospital	(606) 849-2351
FLORENCE	St. Luke Hospital East	(606) 525-4204
FRANKFORT	Bluegrass Regional Medical Center	(502) 875-5240
GEORGETOWN	Scott General Hospital	(502) 863-2141
GLASGOW	T.J. Samson Community Hospital	(502) 651-4444
HARLAN	Harlan Appalachian Regional Hospital	(606) 573-8100 x 660
HARTFORD	Ohio County Hospital	(502) 298-7411
HAZARD	Southeast Kentucky Area Health Education Center	(606) 439-1331 x 259
HENDERSON	Community Methodist Hospital	(502) 827-7700
HOPKINSVILLE	Jennie Stuart Medical Center	(502) 887-0100
	Western State Hospital	(502) 886-4431
JENKINS	Jenkins Community Hospital	(606) 832-2171
LAGRANGE	Tri-County Baptist Hospital	(502) 222-5388

CATEGORY 4: HEALTH SERVICE AGENCIES (Continued)

LEBANON	Spring View Hospital	(502) 692-3161
LEITCHFIELD	Twin Lakes Regional Medical Center	(502) 259-9400
LEXINGTON	Cardinal Hill Hospital	(606) 254-5701 x 270
	Central Baptist Hospital	(606) 275-6100
	Charter Ridge Hospital	(606) 269-2325
	810th Convalescent Hospital	(606) 233-4511 x 4619
	Eastern State Hospital	(606) 255-1431
	Good Samaritan Hospital	(606) 252-6612 x 8656
	Lexington Clinic	(606) 255-6841
	Lexington-Fayette County Health Department	(606) 252-2371
	Humana Hospital - Lexington	(606) 268-3747
	St. Joseph Hospital	(606) 278-3436
	Shriners Hospital for Crippled Children	(606) 266-2101
	University of Kentucky, University Hospital	(606) 233-5545
	Veterans Administration Medical Center	(606) 233-4511 x 4482
LONDON	Cumberland Valley District Health Department	(606) 878-0610 x 202
	Marymount Hospital	(606) 878-6520
LOUISA	Three Rivers Medical Center	(606) 638-9451
LOUISVILLE	Audubon Regional Medical Center	(502) 636-7185
	Baptist Hospital East	(502) 897-8100
	Central State Hospital	(502) 245-4121
	Christian Church Homes of Kentucky	(502) 583-6533
	Columbia/HCA Healthcare Corp	(502) 580-2645
	Frazier Rehab Center	(502) 582-7400
	Hazelwood ICF/MR	(502) 361-2301
	Hospice of Louisville	(502) 456-6200
	Jefferson Place/Manor Nursing Home	(502) 426-5600
	Jewish Hospital	(502) 587-4375
	Kentucky Commission for Handicapped Children	(502) 588-4459
	Kosair Childrens Hospital	(502) 562-7310
	Nazareth Home	(502) 459-9681
	Norton Hospital	(502) 562-7425
	Our Lady of Peace Hospital	(502) 451-3330 x 149
	St. Anthony Medical Center	(502) 627-1000
	SS. Mary and Elizabeth Hospital	(502) 361-6771
	Southwest Hospital	(502) 933-8100
	SpectraCare, Inc	(502) 429-5500
	Suburban Medical Center	(502) 893-1188
	University of Louisville Hospital	(502) 562-3963
	Veterans Administration Medical Center	(502) 895-3401 x 616
	Visiting Nurse Association	(502) 584-2456
MADISONVILLE	Regional Medical Center	(502) 825-5100
MANCHESTER	Memorial Hospital	(606) 598-5104
MARTIN	Our Lady of the Way Hospital	(606) 285-5181
MAYFIELD	Pinelake Medical Center	(502) 247-5211
MAYSVILLE	Meadowview Regional Hospital	(606) 759-5311
MOREHEAD	St. Claire Medical Center	(606) 784-6661 x 3353
MT. STERLING	Mary Chiles Hospital	(606) 498-1220
MT. VERNON	Rockcastle County Hospital	(606) 256-219
MURRAY	Murray-Calloway County Hospital	(502) 762-1249
OWENSBORO	Mercy Hospital	(502) 686-6393
	Owensboro-Daviess County Hospital	(502) 926-3030 x 219
PADUCAH	Lourdes Hospital, Nursing Division, CE Unit	(502) 444-2444
	Western Baptist Hospital	(502) 575-2723
PIKEVILLE	Pikeville Methodist Hospital	(606) 437-3525
PRESTONSBURG	Highlands Regional Medical Center	(606) 886-8511
RADCLIFF	Lincoln Trail Hospital	(502) 351-9444
RICHMOND	Pattie A. Clay Hospital	(606) 623-3131
RUSSELL SPRINGS	Russell County Hospital	(502) 866-4141
RUSSELLVILLE	Logan Memorial Hospital	(502) 726-4011
SHELBYVILLE	Jewish Hospital	(502) 633-2345
SOMERSET	Lake Cumberland District Health Department	(606) 679-4416
	Lake Cumberland Home Health Agency	(606) 679-7439
	Lake Cumberland Regional Hospital	(606) 679-7441
	Lifeline Home Health Care	(606) 679-4100
	Oakwood	(606) 679-4361 x 292

CATEGORY 4: HEALTH SERVICE AGENCIES (Continued)

SOUTH WILLIAMSON	South Williamson Appalachian Regional Healthcare	(606) 237-1700 x 4305
STANFORD	Fort Logan Hospital	(606) 365-2187
WINCHESTER	Clark Regional Medical Center	(606) 744-3261

TENNESSEE:

MURFREESBORO	National HealthCorp LP	(615) 890-2020
NEW TAZEVELL	Comprehensive Home Healthcare Services	(615) 626-8661

CATEGORY 5: HEALTH RELATED ORGANIZATIONS (13)**KENTUCKY:**

BOWLING GREEN	South Central Kentucky AHEC	(502) 745-3325
ERLANGER	American Cancer Society, Northern Kentucky Division	(606) 572-5100
HARTFORD	APIC, West Kentucky	(502) 298-7411
LEXINGTON	Dialysis Clinic, Inc	(606) 252-7712
	Kentucky Home Health Association	(606) 268-2574
LOUISVILLE	American Heart Association, KY Affiliate	(502) 587-8641
	American Red Cross, Louisville Area Chapter	(502) 589-4450 x 413
	Kentucky Association of Health Care Facilities	(502) 425-5000
	Kentucky Association of Homes for the Aging	(502) 635-6468
	Kentucky Hospital Service Corp	(502) 456-6220
	National Health Laboratories, Inc	(502) 456-4700
	R.E.A.C.H. of Louisville, Inc	(502) 585-1911
	SmithKline Beecham Clinical Laboratories	1-800-366-7522

CATEGORY 6: COMMERCIAL ORGANIZATIONS (6)**KENTUCKY:**

CRESCENT SPRINGS	Pharmacare IV Services	(606) 331-1112
LOUISVILLE	Advanced Nursing Services of Kentucky	(502) 933-1279
	Blue Cross and Blue Shield of Kentucky/Medical Management	(502) 423-5985
	D & R Pharmacare	(502) 454-0803
	Phillip Morris Medical Department	(502) 566-1205
PRINCETON	The Pharmacy Corner	(502) 365-2078

CATEGORY 7: OTHER (12)**CALIFORNIA:**

ROSEVILLE	National Center of Continuing Education	(916) 786-4626
SAN DIEGO	Western Schools	(619) 469-2121

KENTUCKY:

BRONSTON	Health Information Dispersment Systems	(606) 561-5514
FRANKFORT	Division of Maternal & Child Health, CHR, DHS	(502) 564-3236
GLASGOW	Nursing CE Associates	(800) 645-0742
HOPKINSVILLE	Continuing Education Network, Inc	(502) 887-9315
LEBANON JUNCTION	Critical Care Connections	(502) 833-4404
LOUISVILLE	Carlin Institute of Weight Control and Health, Inc	(502) 451-7519
	Health Care Consultants, PSC	(502) 568-4043
	Health Care Promotions	(502) 366-4388

MISSOURI:

ST. LOUIS	Mosby/Resource Applications	(301) 796-9010
-----------------	-----------------------------------	----------------

WISCONSIN:

OCONOMOWOC	Caring Unlimited	(800) 992-2731
------------------	------------------------	----------------

NATIONAL NURSING ORGANIZATIONS RECOGNIZED BY THE KENTUCKY BOARD OF NURSING FOR APPROVAL OF CONTINUING EDUCATION OFFERINGS

American Academy of Nurse Practitioners (AANP)	Assn of Women's Health, Obstetrical & Neonatal Nurses (AWHONN)
American Association of Critical Care Nurses (AACN)	National Assn of Pediatric Nurse Associates & Practitioners (NAPNAP)
American Association of Nurse Anesthetists (AANA)	National Assn of Practical Nurses Education & Service (NAPNES)
American College of Nurse-Midwives (ACNM)	National Federation of Licensed Practical Nurses (NFLPN)
American Nurses Association (ANA)	National League for Nursing (NLN)
[Includes national nursing organizations accredited by ANA]	Other State Boards of Nursing

The Kentucky Cabinet for Human Resources (CHR) by statute must approve all HIV/AIDS education courses. KBN recognizes CHR approved HIV/AIDS courses for nursing continuing education.

Investigation & Disciplinary Action

DISCIPLINARY ACTIONS FY 93-94

TYPE OF DISCIPLINARY ACTION	RN	PN
Licenses Revoked	2	3
Licenses Suspended	37	18
Immediate Temporary Suspension of Licenses	4	6
Licenses Suspended Followed by Probation	2	1
Licenses Suspended Followed by Limitation/Probation	10	1
Licenses Probated	7	8
Licenses Limited	1	3
Licenses Limited/Probated	13	14
Licenses Continued on Probation	0	2
Voluntary Surrender of License	5	8
Requests for Reinstatement of Revoked/Suspended Licenses - Granted on a Probationary or Limited Basis	8	2
Admitted to NCLEX/Licenses Probated/Limited	1	5
Admission to NCLEX Denied	0	0
Licensure Reinstatement Denied	19	25
Reprimand	6	7
Licensure Granted	1	3
Consent Decree/Civil Penalty	238	54
No Action Taken	2	0

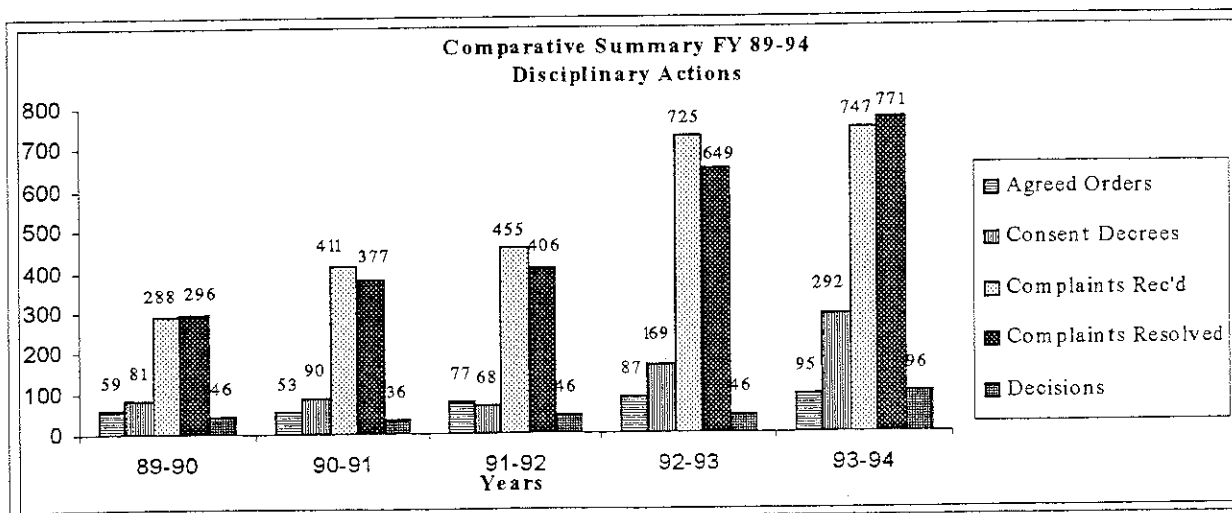
COMPLAINT ACTIVITY

Complaints for Applicants with Conviction Records Reviewed	205
Complaints/No Formal Action Deemed Necessary or Possible	31
Complaints Filed Away in Cases Where Individuals Could Not be Located, Were Deceased, or Criminal Charges Were Dismissed	29
TOTAL NUMBER OF COMPLAINTS RECEIVED	747
ACTIVE CASES AS OF JUNE 30, 1994	271

The *Kentucky Nursing Laws* provide that the Board of Nursing may "deny, limit, revoke, probate or suspend any license to practice nursing issued by the Board or applied for . . . or to otherwise discipline a licensee or to deny admission to the licensure examination, or to require evidence of evaluation and therapy"

The Board continues its efforts to make the public aware of the investigatory and disciplinary procedures and to emphasize the legal requirement to, and importance of, reporting nurses who are suspected of engaging in unsafe or illegal practices.

Note: The complaint activity listed above is included in the number of complaints received and resolved as shown on the graph below.



Nursing Practice

The Board interprets the legal scope of nursing practice according to *Kentucky Revised Statutes Chapter 314* and Board of Nursing administrative regulations in the determination of safe and effective nursing care for the citizens of the Commonwealth. In response to inquiries requesting interpretation of the legal scope of nursing practice, the Board has published advisory opinion statements as guidelines for safe practice.

KBN ADVISORY OPINION STATEMENTS

- | | |
|-------------|---|
| 83-01 | Role of the Registered Nurse/Licensed Practical Nurse in Spinal Screening for Detection of Common Abnormal/Curvatures of the Spine |
| 83-02 | Role of the Advanced Registered Nurse Practitioner, Registered Nurse, and Licensed Practical Nurse in Gynecological Cancer Detection |
| * 83/89B-03 | Roles of Nurses in Intravenous Therapy Practice |
| 84-04 | Roles of Registered Nurses and Advanced Registered Nurse Practitioners in the Administration of Medication per Intraspinal Routes |
| 84-05 | The Performance of Advanced Life Support Procedures by Registered Nurses |
| 84-06 | The Performance of Arterial Puncture by Registered Nurses |
| 84-07 | The Performance of Stapling and Suturing for Superficial Wound Closure by Registered Nurses, and the Removal of Staples and Sutures by Nurses |
| 84-08 | Role of the Registered Nurse First Assistant |
| * 95-09 | The Performance of Wound Debridement by Nurses |
| 85-10 | Roles of Nurses in the Care of Intrapartum Patients |
| 85-11 | Roles of Nurses in the Insertion and Removal of a Gastric Tube and in the Reinsertion of a Gastrostomy Tube |
| * 85-12 | Advanced Registered Nurse Practitioner Prescription Authority |
| 85-13 | Roles of Registered Nurses in Psychiatric and Mental Health Nursing Practice |
| 87-14 | Roles of Nurses in the Implementation of Patient Care Orders |
| * 87-15 | Roles of Nurses in the Supervision and Delegation of Nursing Acts to Unlicensed Personnel |
| * 87-16 | Roles of Nurses in the Administration of Medication via Various Routes |
| 87-17 | Roles of Nurses in the Administration of "PRN" Medication |
| 87-18 | Employment of Students in Nursing |
| 88-19 | Responsibility and Accountability of Nurses for Patient Care Assignments and Nursing Care Delivery |
| 89-20 | Roles of Registered Nurses in Invasive Cardiac Procedures |
| 90-21 | Roles of Nurses in Dialysis |
| 90-22 | Roles of Nurses who Provide "Private Duty" Nursing |
| 90-23 | The Application and Removal of a Cast or Splint by Nurses |
| 90-24 | Responsibility and Accountability for Assuring Safe Patient Care by Nurses Employed in Health Care Facilities |
| 91-25 | Peripheral Insertion of Central and Long Line Intravenous Catheters by Nurses |
| * 91-26 | Roles of Nurses in the Delivery of Prehospital Emergency Medical Care via Ambulance Services |
| 92-27 | Components of Licensed Practical Nursing Practice |
| * 92-28 | Roles of Nurses and Unlicensed Nursing Personnel in Endoscopic Procedures |
| 93-29 | Cardiopulmonary/Respiratory Nursing Practice |
| 93-30 | School Nursing Practice |
| * 94-31 | Removal of Femoral Access Devices (Sheaths) and Use of Mechanical Compression Devices by Registered Nurses |

* These advisory opinion statements were either revised or created during FY 93-94.

Nursing Incentive Scholarship Fund

The Nursing Incentive Scholarship Fund (NISF) provides scholarships to Kentucky residents who will be attending in-state approved prelicensure nursing programs (registered nurse or practical nurse) or in-state graduate nursing programs. To be eligible for consideration, an applicant must have a designated sponsor (health care facility or educational institution) who matches any NISF monies awarded in return for the applicant's service upon completion of the educational program.

SUMMARY DATA NURSING INCENTIVE SCHOLARSHIP FUND				
APPLICANT/RECIPIENT DATA	FY 90-91	FY 91-92	FY 92-93	FY 93-94
# Applications Mailed Out:	1200	1123	1215	1146
# Applications Received/Processed:	148	149	120	51
# Applications Approved/Not Funded:	42	56	30	0
# Applications Approved/Funded:	58	70	70	42
(Initial)	58	39	40	23
(Continuation)		31	30	19
# Recipients Graduated: (97)	14	34	49	Data Not Available Yet
# Completed Work Obligation: (36)		12	18	6

Due to the reduced demand for licensed nurses in the workplace and the resulting decrease in sponsor participation, the eligible NISF applicant pool significantly decreased in FY 94.

DISBURSEMENT DATA	FY 90-91	FY 91-92	FY 92-93	FY 93-94
NISF Fund Balance:	\$152,925	\$108,800	\$121,100	\$133,800
NISF Disbursements:	\$88,050	\$97,620	\$108,745	\$66,945
(Initial)	\$88,050	\$51,930	\$62,565	\$36,595
(Continuation)		\$45,690	\$46,180	\$30,350

NOTE: Fiscal activity reflects awards designated for the following year.

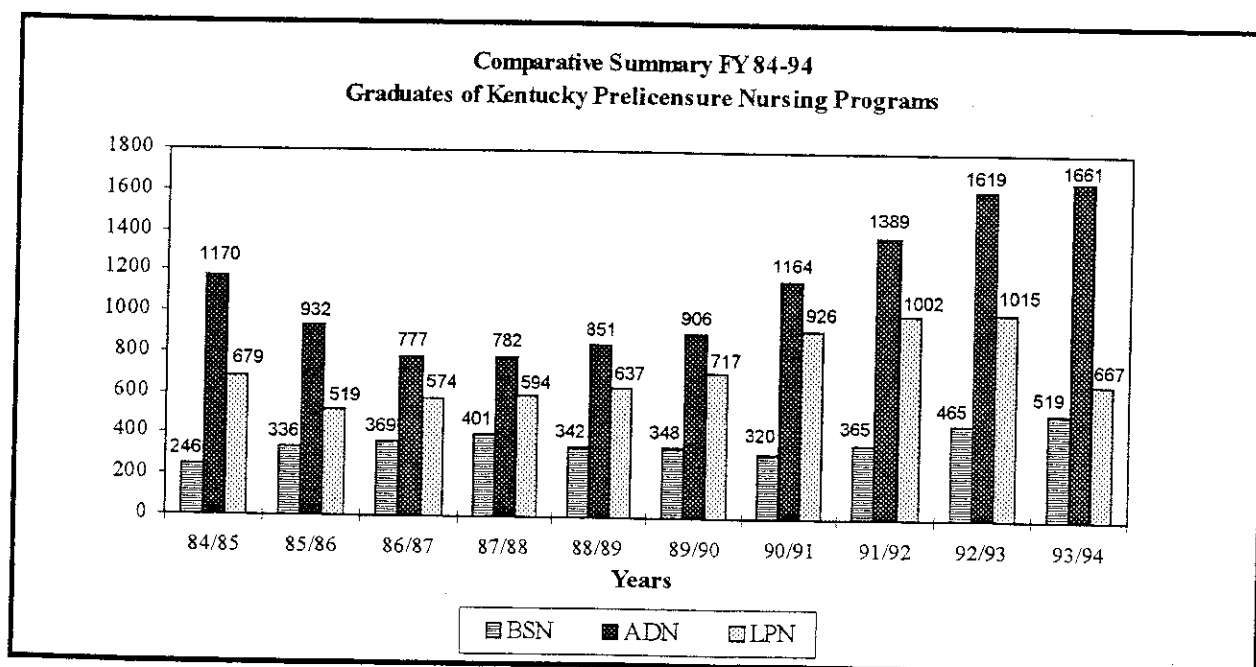
Prelicensure Programs of Nursing

The Kentucky Board of Nursing is the legally authorized body in the Commonwealth to approve programs of nursing preparing persons for eligibility for licensure as nurses. Through the provisions of the *Kentucky Nursing Laws* (KRS 314.011, 314.031, 314.111 and 314.131), the Board prescribes standards for educational institutions offering programs which prepare candidates for licensure as nurses. These standards include provisions for consultation, survey visits, review of Annual Reports and Faculty Summaries, monitoring of fiscal year licensure examination pass rates, and requests for and review of other special reports.

NCLEX Using CAT

The administration of the national nurse licensure examination (NCLEX) changed as of April 1, 1994. After more than 10 years of research, the National Council of State Boards of Nursing implemented computerized adaptive testing (CAT) for the administration of the NCLEX-RN and NCLEX-PN. Formerly, the nurse licensure examinations were offered for registered nurse candidates in February and July, and in April and October for practical nurse candidates. With the April 1994 implementation of computer adaptive technology, eligible licensure candidates may schedule the NCLEX examination at a time of personal preference. Unless requested otherwise, all candidates will be scheduled to test within a maximum of 45 days of requesting a testing appointment at the testing center of choice.

Since NCLEX testing is now on a demand basis, the reporting of pass rates by programs of nursing is in transition. For the FY 93-94, there was a paper and pencil examination administered in July 1993 and February 1994 for registered nurse candidates, and an October 1993 examination for practical nurse candidates. Beginning April 1, 1994, the reporting of NCLEX pass rates for programs of nursing will be related to graduation date.



SOURCE: 1984-94 Annual Reports from Kentucky Prelicensure Programs of Nursing

**KENTUCKY PRELICENSURE PROGRAMS OF NURSING
GRADUATES & NCLEX PASS RATES
FY 93-94**

Registered Nurse Programs

BACCALAUREATE DEGREE NURSING PROGRAMS	# GRADS *	NCLEX PASS RATES 7/93 & 2/94		NCLEX/CAT PASS RATES 4/94 - 6/94	
		# TESTED *	% PASSED	# TESTED *	% PASSED
Bellarmine College, Louisville	22	10	100	3	100
Berea College, Berea	10	18	72	2	100
Eastern Kentucky University, Richmond	87	68	98	26	89
Morehead State University, Morehead	33	31	87	9	89
Murray State University, Murray	51	51	94	22	96
Spalding University, Louisville	67	50	90	12	83
Thomas More College, Crestview Hills	12	15	100	7	100
- Providence Hospital Ext, Cincinnati, OH	1				
University of Kentucky, Lexington	100	123	93	32	88
University of Louisville, Louisville	89	93	91	19	100
Western Kentucky University, Bowling Green	47	37	84	26	84
TOTAL BSN GRADUATES & PASS RATES	519	496	91	158	93
ASSOCIATE DEGREE NURSING PROGRAMS	# GRADS *	NCLEX PASS RATES 7/93 & 2/94		NCLEX/CAT PASS RATES 4/94 - 6/94	
		# TESTED *	% PASSED	# TESTED *	% PASSED
Ashland Community College, Ashland	74	77	92	21	81
Eastern Kentucky University, Richmond	123	117	95	26	100
Elizabethtown Community College, Elizabethtown	81	84	96	24	100
Hazard Community College, Hazard	56	61	79	13	92
Henderson Community College, Henderson	70	107	95	26	92
- Owensboro Extension	27				
Hopkinsville Community College, Hopkinsville	49	56	93	17	100
Jefferson Community College, Louisville	163	166	93	24	100
Kentucky State University, Frankfort	50	49	92	15	93
Kentucky Wesleyan College, Owensboro	47	36	81	32	78
Lees College, Jackson	26	27	82	14	93
Lexington Community College, Lexington	81	89	100	42	98
Lincoln Memorial University, Harrogate, TN	20	20	95	**	**
- Corbin Extension					
Madisonville Community College, Madisonville	103	105	92	20	100
Maysville Community College, Maysville	42	26	96	29	97
Midway College, Midway	88	102	89	28	89
- Danville Extension	24				
Morehead State University, Morehead	48	35	97	8	88
Northern Kentucky University, Highland Heights	98	84	96	24	100
Paducah Community College, Paducah	86	79	96	61	98
Pikeville College, Pikeville	29	18	78	22	77
Prestonsburg Community College, Prestonsburg	34	32	91	2	100
Somerset Community College, Somerset	51	44	100	22	96
Southeast Community College, Cumberland	60	50	88	10	90
Sue Bennett College, London (OPENED 8/93)	0	-	-	-	-
Western Kentucky University, Bowling Green	102	130	90	38	97
- Glasgow Extension	29				
TOTAL ADN GRADUATES & PASS RATES	1,661	1,594	92	518	94

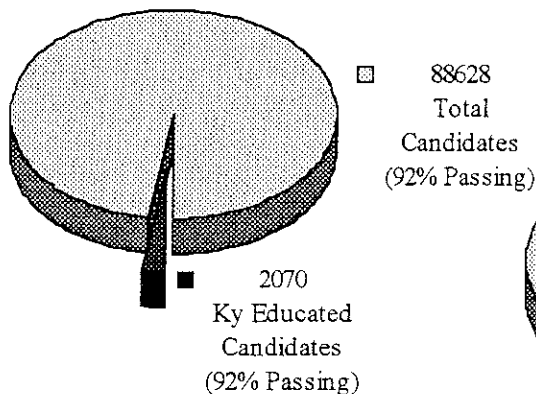
* The number of graduates and the number tested vary because some FY 92-93 graduates were tested in FY 93-94 and some graduates may not be tested until FY 94-95.

** Data not yet available.

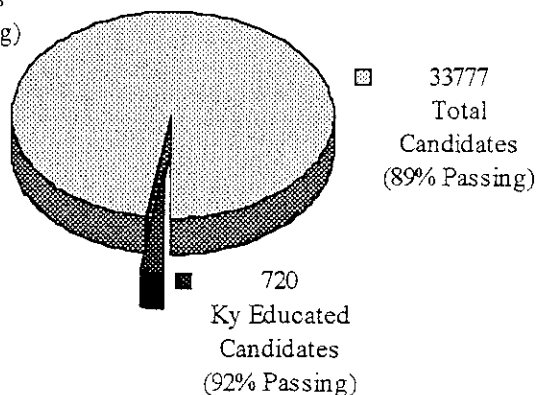
Practical Nurse Programs

PROGRAM NAME	# GRADS *	NCLEX PASS RATES 10/93		NCLEX/CAT PASS RATES 4/94 - 6/94	
		# TESTED *	% PASSED	# TESTED *	% PASSED
Ashland State Voc-Tech School, Ashland	21	23	74	2	50
Central Kentucky State Voc-Tech School, Lexington	50	25	88	30	93
Cumberland Valley Health Occupations Center, Pineville	27	35	86	11	100
- Mt. Vernon Extension	13				
Danville School of Health Occupations, Danville	46	55	95	21	100
Galen Health Institutes, Louisville	115	55	93	62	97
Glasgow School for Health Occupations, Glasgow	0	92	98	1	0
- Elizabethtown Extension	18				
Hazard State Voc-Tech School, Hazard	27	39	92	0	-
- Letcher County Extension	1				
Jefferson State Voc-Tech School, Louisville	54	28	82	36	89
Madisonville Health Occupations School, Madisonville	43	25	96	2	50
Mayo State Voc-Tech School, Paintsville	0	36	89	0	-
- Pikeville Extension	0				
Murray Area Vocational Education Center, Murray	28	21	86	1	100
Northern Ky Health Occupations Center, Edgewood	31	35	94	28	93
- Carrollton Extension	12				
Owensboro State Voc-Tech School, Owensboro	37	32	94	0	-
Rowan State Voc-Tech School, Morehead	0	67	87	0	-
- Maysville Extension	0				
Somerset State Voc-Tech School, Somerset	21	55	91	17	82
Spencerian College, Louisville	102	76	95	43	100
West Kentucky State Voc-Tech School, Paducah	21	21	100	0	-
TOTAL PN GRADUATES & PASS RATES	667	720	91	254	80

NCLEX-RN Pass Rates of First Time Exam Writers
KY & All U.S. Jurisdictions



NCLEX-LPN Pass Rates of First Time Exam Writers
KY & All U.S. Jurisdictions



Kentucky Nurse Licensees

The Board's mission of public protection is accomplished through the licensure and registration of those applicants who meet statutory and regulatory requirements. KRS 314.031 states "It shall be unlawful for any person to call or hold himself out as or use the title of nurse or to practice or offer to practice as a nurse unless licensed under the provision of KRS 314" The *Kentucky Nursing Laws* provide that "The license of every person under the provisions of KRS 314 . . . shall be renewed at least biennially" 201 Kentucky Administrative Regulation 20:080 states that the licensure period shall be November 1 to October 31.

BIENNIAL LICENSURE/CE EARNING SCHEDULE		
REGISTERED NURSE LICENSURE/EARNING PERIOD	EARNING REQUIREMENT	FOR RENEWAL BY
11/1/92 - 10/31/94	30 Contact Hours	10/31/94
11/1/94 - 10/31/96	30 Contact Hours	10/31/96
11/1/96 - 10/31/98	30 Contact Hours	10/31/98
11/1/98 - 10/31/00	30 Contact Hours	10/31/00
PRACTICAL NURSE LICENSURE/EARNING PERIOD	EARNING REQUIREMENT	FOR RENEWAL BY
11/1/91 - 10/31/93	30 Contact Hours	10/31/93
11/1/93 - 10/31/95	30 Contact Hours	10/31/95
11/1/95 - 10/31/97	30 Contact Hours	10/31/97
11/1/97 - 10/31/99	30 Contact Hours	10/31/99

Licenses issued by the Kentucky Board of Nursing are titled "registered nurse" (RN) and "licensed practical nurse" (LPN). Active licensure status grants recipients the privilege to practice nursing in the Commonwealth of Kentucky. Inactive status allows the use of the licensure title but prohibits the practice of nursing in the Commonwealth. During FY 93-94, there were 40,853 registered nurse licenses renewed (37,078 active and 3,775 inactive) and 13,937 practical nurse licenses renewed (12,627 active and 1,310 inactive).

LICENSURE TOTALS BY TYPE AND STATUS				
LICENSURE TYPE	REGISTERED NURSE		PRACTICAL NURSE	
	ACTIVE	INACTIVE	ACTIVE	INACTIVE
TOTAL CURRENT LICENSEES AS OF JUNE 1994	37,078	3,775	12,627	1,310
TOTAL OUT-OF-COUNTRY	42	18	0	2
TOTAL OUT-OF-STATE	5,822	2,205	1,237	419
TOTAL RESIDING IN KENTUCKY	31,214	1,552	11,390	889
LICENSES ISSUED BY REINSTATEMENT	238	0	275	3
LICENSES ISSUED BY ACTIVATION/INACTIVATION	71	1	48	3

**KENTUCKY REGISTERED NURSE LICENSEES
BY COUNTY OF RESIDENCE, EDUCATIONAL LEVEL & EMPLOYMENT DATA
FY 93-94**

COUNTY	RNS	HIGHEST EDUCATIONAL LEVEL ATTAINED							EMPLOYMENT DATA					
		DIP	ADN	BSN	BAC OTH	MSN	MS OTH	DR OTH	FT	PT	UN	OTH	RET	UKN
ADAIR	89	15	53	12	6	3	--	--	75	8	3	1	2	--
ALLEN	77	9	43	14	3	6	2	--	60	5	9	1	--	2
ANDERSON	121	13	84	17	3	3	1	--	95	16	6	4	--	--
BALLARD	58	3	45	7	1	2	--	--	44	7	4	1	--	2
BARREN	241	38	158	32	8	3	2	--	174	30	21	5	9	2
BATH	49	4	37	5	1	--	2	--	43	2	1	1	1	1
BELL	217	41	148	13	7	5	2	--	159	21	20	5	5	7
BOONE	549	118	240	132	26	19	11	2	299	162	48	24	6	10
BOURBON	152	16	88	34	4	7	3	--	104	23	14	5	6	--
BOYD	603	144	333	87	17	13	8	1	415	102	59	16	8	3
BOYLE	213	43	113	38	9	8	2	--	140	32	24	5	11	1
BRACKEN	67	5	51	7	2	1	--	--	50	8	5	--	--	4
BREATHITT	99	13	68	13	2	1	2	--	67	6	22	2	1	1
BRECKINRIDGE	93	19	58	16	--	--	--	--	54	21	14	--	3	1
BULLITT	337	54	177	88	9	5	4	--	266	47	14	5	4	1
BUTLER	60	5	43	10	1	1	--	--	43	8	4	1	3	1
CALDWELL	89	6	61	14	4	2	2	--	69	12	5	2	--	1
CALLOWAY	217	23	51	104	11	19	4	5	151	31	19	4	8	4
CAMPBELL	704	170	339	122	36	22	6	6	377	218	42	21	25	21
CARLISLE	42	--	28	11	3	--	--	--	34	3	2	1	--	2
CARROLL	43	16	17	7	1	--	2	--	24	17	1	1	--	2
CARTER	166	18	120	17	8	2	1	--	128	13	17	3	1	--
CASEY	55	4	41	10	--	--	--	--	49	3	3	--	--	4
CHRISTIAN	413	59	247	72	13	19	2	1	319	35	36	7	11	--
CLARK	260	39	133	60	10	13	3	2	199	41	13	3	4	5
CLAY	104	15	58	23	3	1	4	--	83	11	6	1	2	--
CLINTON	52	1	39	9	1	--	1	--	44	1	5	--	1	1
CRITTENDEN	78	6	57	11	3	1	--	--	59	10	6	2	--	1
CUMBERLAND	34	5	24	4	--	1	--	--	31	2	1	--	--	1
DAVIESS	958	191	569	125	39	18	12	2	643	150	95	24	40	--
EDMONSON	29	4	22	2	1	--	--	--	26	2	--	--	1	6
ELLIOTT	27	2	16	7	1	1	--	--	14	5	5	--	1	--
ESTILL	68	3	48	12	4	1	--	--	48	9	6	4	1	2
FAYETTE	3692	654	1332	1178	188	233	73	32	2587	607	282	100	96	--
FLEMING	104	10	75	13	2	2	2	--	85	10	4	3	--	21
FLOYD	293	26	213	30	16	4	3	--	228	17	32	6	6	2
FRANKLIN	341	68	172	52	24	16	6	3	228	49	39	15	10	4
FULTON	32	4	18	8	--	1	1	--	20	5	5	1	--	--
GALLATIN	21	4	15	--	1	--	1	--	14	5	--	--	--	1
GARRARD	102	14	62	14	8	4	--	--	90	5	4	1	1	2
GRANT	68	15	39	11	2	1	--	--	44	14	5	3	1	1
GRAVES	265	24	169	58	4	5	2	--	183	33	20	9	3	1
GRAYSON	180	33	122	11	4	5	4	--	131	29	7	7	6	17
GREEN	58	8	42	6	1	--	1	--	47	4	3	2	1	--
GREENUP	320	63	202	37	11	5	1	1	221	55	26	3	12	1
HANCOCK	53	8	35	7	2	1	--	--	28	19	1	2	3	3
HARDIN	774	98	458	159	22	18	17	1	550	130	64	10	11	--
HARLAN	249	83	132	16	8	6	4	--	200	14	22	6	5	10
HARRISON	123	28	70	20	3	2	--	--	87	17	5	5	8	2
HART	82	9	54	10	4	2	2	--	65	12	4	--	1	1
HENDERSON	431	57	283	51	14	18	7	1	306	68	19	13	13	--
HENRY	83	16	50	12	3	2	--	--	60	8	12	2	1	12
HICKMAN	27	3	14	6	2	1	--	--	19	5	2	--	--	--
HOPKINS	439	36	280	76	20	17	8	--	299	85	36	11	8	1
JACKSON	37	4	26	26	2	--	1	--	32	2	1	1	1	--
JEFFERSON	7637	1859	2431	2463	332	284	215	45	5230	1418	485	225	228	50
JESSAMINE	375	46	178	100	23	15	8	3	247	75	33	10	5	5
JOHNSON	136	12	93	19	6	3	3	--	102	10	11	6	5	2
KENTON	1289	366	521	241	86	43	24	6	679	402	107	43	27	31
KNOTT	102	6	84	9	1	1	1	--	84	5	12	--	--	1
KNOX	132	15	90	13	10	1	2	1	109	5	10	4	1	3
LARUE	90	14	62	10	2	1	1	--	63	20	1	4	1	1

DIP = Diploma Program
ADN = Associate Degree in Nursing
BSN = Baccalaureate Degree in Nursing
BAC OTH = Baccalaureate in Other Field

MSN = Masters Degree in Nursing
MS OTH = Masters in Other Field
DR OTH = Doctorate Degree in Nursing or Other Field

FT = Full Time in Nursing
PT = Part Time in Nursing
UN = Unemployed
OTH = Employed in Other Field

RET = Retired
UKN = No Known Data

(Continued)
KENTUCKY REGISTERED NURSE LICENSEES
BY COUNTY OF RESIDENCE, EDUCATIONAL LEVEL & EMPLOYMENT DATA

COUNTY	RNS	HIGHEST EDUCATIONAL LEVEL ATTAINED							EMPLOYMENT DATA					
		DIP	ADN	BSN	BAC OTH	MSN	MS OTH	DR OTH	FT	PT	UN	OTH	RET	UKN
LAUREL	245	28	153	49	8	4	3	--	183	21	33	5	1	2
LAWRENCE	77	17	51	5	4	--	--	--	58	15	2	2	--	--
LEE	23	3	17	3	--	--	--	--	16	1	5	--	1	--
LESLIE	76	9	42	10	7	4	3	--	64	4	2	4	--	2
LETCHER	185	22	144	10	5	2	1	--	139	11	25	6	1	3
LEWIS	48	4	33	7	2	2	--	--	36	2	4	3	2	1
LINCOLN	109	11	76	16	5	--	--	--	93	9	4	2	--	1
LIVINGSTON	85	10	55	14	3	3	--	--	64	11	6	2	1	1
LOGAN	121	18	76	16	7	1	3	--	87	20	8	5	--	1
LYON	54	6	30	15	2	--	1	--	36	6	6	1	1	4
McCRACKEN	875	103	547	154	36	21	13	--	624	111	66	27	27	20
McCREARY	68	3	53	8	2	--	2	--	53	4	7	3	--	1
McLEAN	96	10	69	12	3	--	2	--	76	10	7	1	2	--
MADISON	578	62	217	203	34	33	21	8	431	90	31	12	9	5
MAGOFFIN	44	--	37	7	--	--	--	--	34	4	4	1	--	1
MARION	89	10	46	22	5	2	2	1	75	5	6	1	--	2
MARSHALL	236	29	144	48	8	4	1	2	167	32	20	5	4	8
MARTIN	52	6	44	2	--	--	--	--	40	1	7	--	2	2
MASON	153	38	83	13	8	5	5	--	103	23	11	2	8	5
MEADE	90	25	53	9	1	1	1	--	60	13	14	2	1	--
MENIFEE	15	4	9	2	--	--	--	--	8	1	3	--	2	1
MERCER	139	32	72	28	2	3	1	--	106	18	6	2	7	--
METCALFE	44	5	28	5	4	--	1	--	33	8	2	1	--	--
MONROE	35	6	20	4	2	1	2	--	30	2	2	1	--	--
MONTGOMERY	113	16	73	17	2	3	1	1	90	10	6	4	3	--
MORGAN	57	3	42	7	4	--	--	--	43	3	6	3	--	2
MUHLENBERG	214	16	165	22	4	4	1	--	159	30	14	2	5	4
NELSON	249	50	123	56	9	7	4	--	171	48	16	8	1	5
NICHOLAS	37	11	20	3	1	2	--	--	32	1	2	1	1	--
OHIO	170	19	134	12	3	1	1	--	123	19	14	4	5	5
OLDHAM	526	137	184	153	21	21	9	1	329	126	44	16	8	4
OWEN	54	12	34	5	2	1	--	--	37	11	4	--	2	--
OWSLEY	15	1	11	2	--	--	1	--	11	2	2	--	--	--
PENDLETON	52	11	29	10	1	--	--	1	33	10	7	--	1	1
PERRY	223	34	138	33	7	5	4	1	186	12	16	5	3	1
PIKE	319	33	254	20	6	3	3	--	232	32	32	3	4	16
POWELL	40	3	28	6	2	1	--	--	30	2	6	2	--	--
PULASKI	373	51	237	56	9	12	8	--	269	50	34	11	8	1
ROBERTSON	15	--	12	3	--	--	--	--	12	1	1	1	--	--
ROCKCASTLE	62	8	43	9	1	--	1	--	53	4	2	2	1	--
ROWAN	185	17	99	34	11	15	7	2	144	15	16	5	4	1
RUSSELL	78	8	59	8	2	1	--	--	58	10	5	3	1	1
SCOTT	209	28	116	44	5	8	6	1	138	41	17	7	6	--
SHELBY	215	46	100	45	15	3	5	1	154	39	13	4	4	1
SIMPSON	68	11	45	7	4	--	--	1	48	15	4	--	--	1
SPENCER	57	10	27	18	1	1	--	--	46	5	2	4	--	--
TAYLOR	119	17	77	18	3	1	3	--	93	17	6	1	2	--
TODD	41	7	27	5	--	2	--	--	30	4	5	--	2	--
TRIGG	83	9	53	12	2	3	4	--	66	7	7	2	--	1
TRIMBLE	22	7	9	4	--	2	--	--	19	--	--	1	2	--
UNION	121	14	86	14	2	--	4	--	77	18	11	5	1	9
WARREN	835	118	460	144	56	29	23	4	614	121	60	22	12	6
WASHINGTON	41	8	23	7	1	--	2	--	30	5	5	1	--	--
WAYNE	79	8	57	11	1	1	--	--	62	9	5	3	--	--
WEBSTER	104	5	87	11	1	--	--	--	77	14	8	3	1	1
WHITLEY	246	33	165	28	6	10	3	1	188	27	17	10	4	--
WOLFE	33	2	24	6	1	--	--	--	27	3	2	--	1	--
WOODFORD	275	51	134	61	13	8	4	4	188	45	27	10	4	1
County Total	32766	5950	16205	7322	1383	1098	619	141	22909	5367	2479	872	763	377
Unknown	--	60	--	--	--	--	--	--	--	--	--	--	--	--
Out-of-Country	60	30	4	15	7	--	2	2	32	13	11	3	--	1
Out-of-State	8027	1917	2663	2151	472	461	263	89	5460	1273	734	228	212	119
TOTAL	40853	7957	18872	9488	1861	1559	884	232	28401	6653	3224	1103	975	497

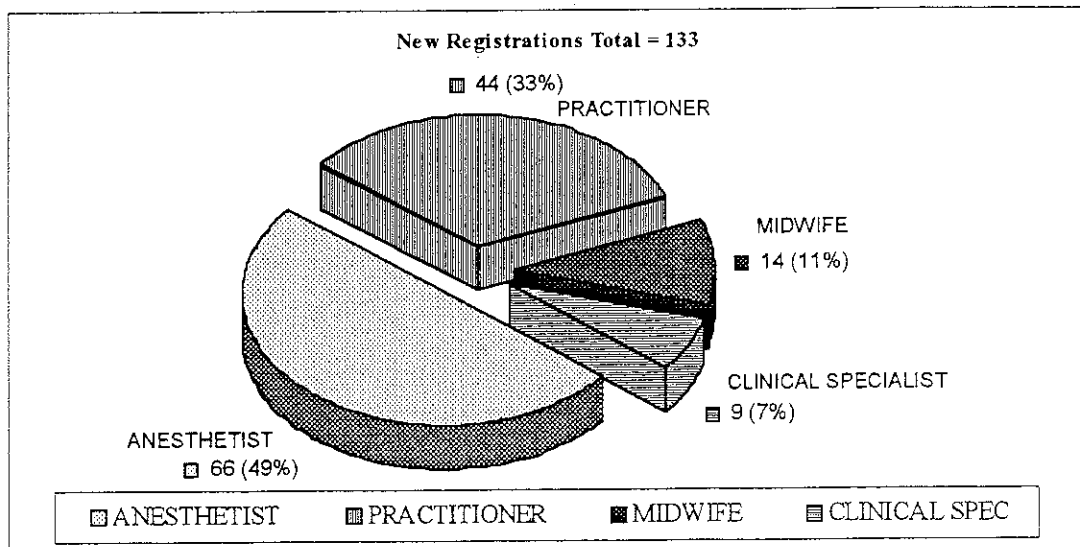
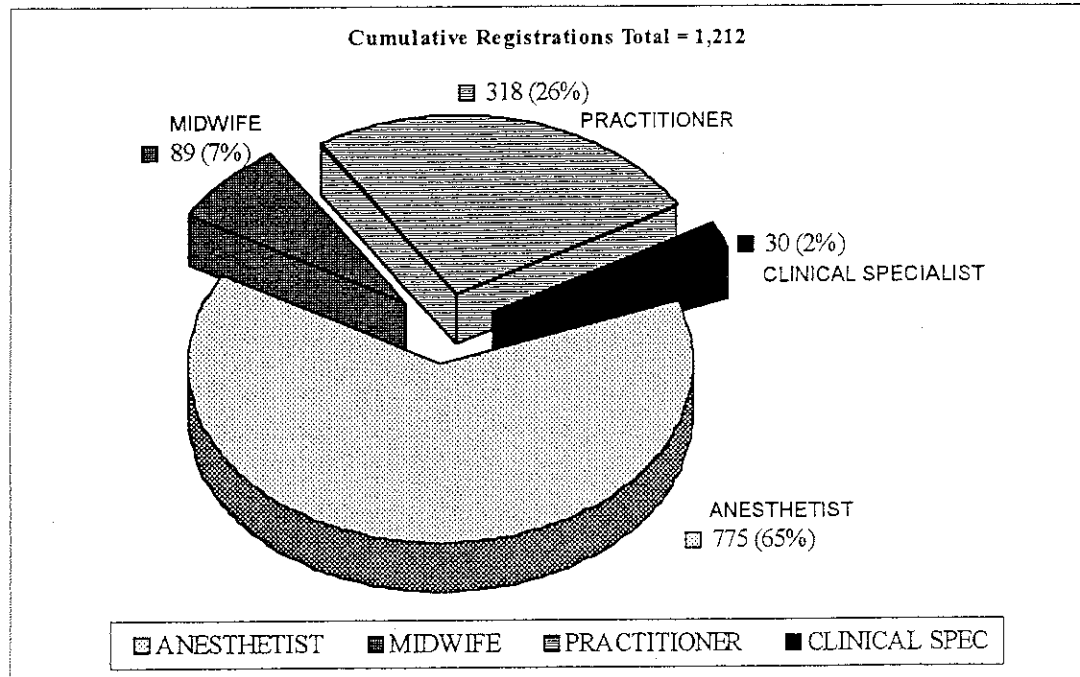
**KENTUCKY PRACTICAL NURSE LICENSEES
BY COUNTY OF RESIDENCE, EDUCATIONAL LEVEL & EMPLOYMENT DATA
FY 93-94**

COUNTY	PNS	EMPLOYMENT DATA						COUNTY	PNS	EMPLOYMENT DATA					
		FT	PT	UN	OTH	RET	UKN			FT	PT	UN	OTH	RET	UKN
ADAIR	48	31	6	8	3	—	—	LEE	13	12	—	1	—	—	—
ALLEN	60	42	10	7	—	1	—	LESLIE	35	29	3	2	1	—	—
ANDERSON	26	21	2	—	2	—	1	LETCHER	186	123	18	37	4	1	3
BALLARD	34	25	6	2	1	—	—	LEWIS	27	21	1	5	—	—	—
BARREN	274	197	37	22	13	4	1	LINCOLN	165	128	11	14	6	4	2
BATH	50	34	4	7	—	1	4	LIVINGSTON	35	26	1	5	1	1	1
BELL	156	104	16	29	5	2	—	LOGAN	58	47	6	4	—	1	—
BOONE	221	123	52	28	11	4	3	LYON	20	10	3	3	2	2	—
BOURBON	46	40	4	—	1	—	1	McCRACKEN	261	184	43	21	2	9	2
BOYD	250	143	53	37	6	9	2	McCREARY	65	40	7	17	1	—	—
BOYLE	199	128	23	19	17	7	5	McLEAN	43	26	7	7	2	—	1
BRACKEN	36	29	3	1	2	—	1	MADISON	111	80	10	11	4	1	5
BREATHITT	62	49	9	4	—	—	—	MAGOFFIN	33	21	4	7	1	—	—
BRECKINRIDGE	35	22	7	4	—	—	2	MARION	71	48	7	12	2	—	2
BULLITT	128	83	16	18	5	3	3	MARSHALL	126	93	17	11	2	1	2
BUTLER	29	19	3	3	2	—	2	MARTIN	20	13	1	4	—	—	2
CALDWELL	45	30	6	7	2	—	—	MASON	46	35	4	5	1	1	—
CALLOWAY	164	121	21	10	5	5	2	MEADE	20	12	4	4	—	—	—
CAMPBELL	236	132	57	24	9	5	9	MENIFEE	18	14	2	1	—	1	—
CARLISLE	19	16	2	—	1	—	—	MERCER	140	88	21	20	5	1	5
CARROLL	29	19	6	1	—	—	3	METCALFE	38	30	7	—	—	1	—
CARTER	72	59	4	7	1	—	1	MONROE	44	36	3	2	3	—	—
CASEY	68	42	9	10	2	—	5	MONTGOMERY	62	48	4	7	—	1	2
CHRISTIAN	225	165	17	24	11	5	3	MORGAN	28	19	2	6	—	—	1
CLARK	96	69	11	6	3	—	7	MUHLBERG	151	91	35	16	5	4	—
CLAY	73	58	5	9	—	1	—	NELSON	81	51	10	10	—	—	10
CLINTON	39	30	5	3	—	—	1	NICHOLAS	20	15	2	1	—	1	1
CRITTENDEN	26	15	5	6	—	—	—	OHIO	81	51	15	7	2	2	4
CUMBERLAND	31	27	1	3	—	—	—	OLDHAM	97	59	16	10	4	1	7
DAVIESS	350	219	62	40	14	11	4	OWEN	27	20	5	1	1	—	—
EDMONSON	25	18	2	5	—	—	—	OWSLEY	5	5	—	—	—	—	—
ELLIOTT	17	12	2	3	—	—	—	PENDLETON	37	22	5	4	1	1	4
ESTILL	27	20	5	—	1	—	1	PERRY	176	132	17	21	3	2	1
FAYETTE	657	472	86	49	20	17	13	PIKE	325	222	33	48	12	3	7
FLEMING	32	19	7	5	1	—	—	POWELL	29	18	3	3	1	—	4
FLOYD	222	152	22	33	9	1	5	PULASKI	227	167	18	32	4	1	5
FRANKLIN	54	36	9	4	4	1	—	ROBERTSON	9	8	—	1	—	—	—
FULTON	16	14	2	—	—	—	—	ROCKCASTLE	51	33	9	4	2	—	3
GALLATIN	22	14	6	—	—	—	2	ROWAN	63	40	7	13	2	—	1
GARRARD	54	36	7	8	1	—	2	RUSSELL	56	34	15	4	1	—	2
GRANT	55	34	12	8	1	—	—	SCOTT	69	53	8	6	—	—	2
GRAVES	147	100	21	19	3	—	4	SHELBY	49	36	6	3	—	1	3
GRAYSON	33	15	12	5	1	—	—	SIMPSON	24	18	3	2	1	—	—
GREEN	56	46	4	3	3	—	—	SPENCER	16	12	3	—	—	—	1
GREENUP	138	82	27	20	4	2	3	TAYLOR	53	42	2	5	4	—	—
HANCOCK	33	14	9	6	3	—	1	TODD	22	15	2	4	—	1	—
HARDIN	253	169	38	24	7	1	14	TRIGG	31	23	1	5	—	2	—
HARLAN	106	72	10	14	3	6	1	TRIMBLE	18	15	1	1	—	—	1
HARRISON	47	30	6	6	3	2	—	UNION	38	24	6	4	3	1	—
HART	77	62	8	5	2	—	—	WARREN	180	126	31	18	3	2	—
HENDERSON	109	84	9	7	4	3	2	WASHINGTON	46	31	4	6	2	2	1
HENRY	25	20	2	2	—	1	—	WAYNE	58	42	5	8	3	—	—
HICKMAN	21	19	2	—	—	—	—	WEBSTER	62	34	13	11	2	1	1
HOPKINS	227	154	27	27	10	7	2	WHITLEY	91	66	11	8	2	2	2
JACKSON	14	7	3	3	—	—	1	WOLFE	19	13	2	1	—	—	3
JEFFERSON	1719	1172	231	132	48	37	99	WOODFORD	42	27	7	3	3	1	1
JESSAMINE	126	95	10	10	8	—	3	County Total							
JOHNSON	98	65	6	20	3	2	2	Out-of-Country							
KENTON	447	235	126	38	27	4	17	Out-Of-State							
KNOTT	81	57	5	15	3	—	1	12279	8360	1692	1308	387	197	335	
KNOX	108	88	7	11	—	—	2	2	1	—	—	1	—	—	
LARUE	31	24	5	1	—	—	1	1656	1036	256	202	59	27	76	
LAUREL	87	60	10	13	—	1	3	TOTAL							
LAWRENCE	70	43	11	7	4	1	4	13937	9397	1948	1510	447	224	411	

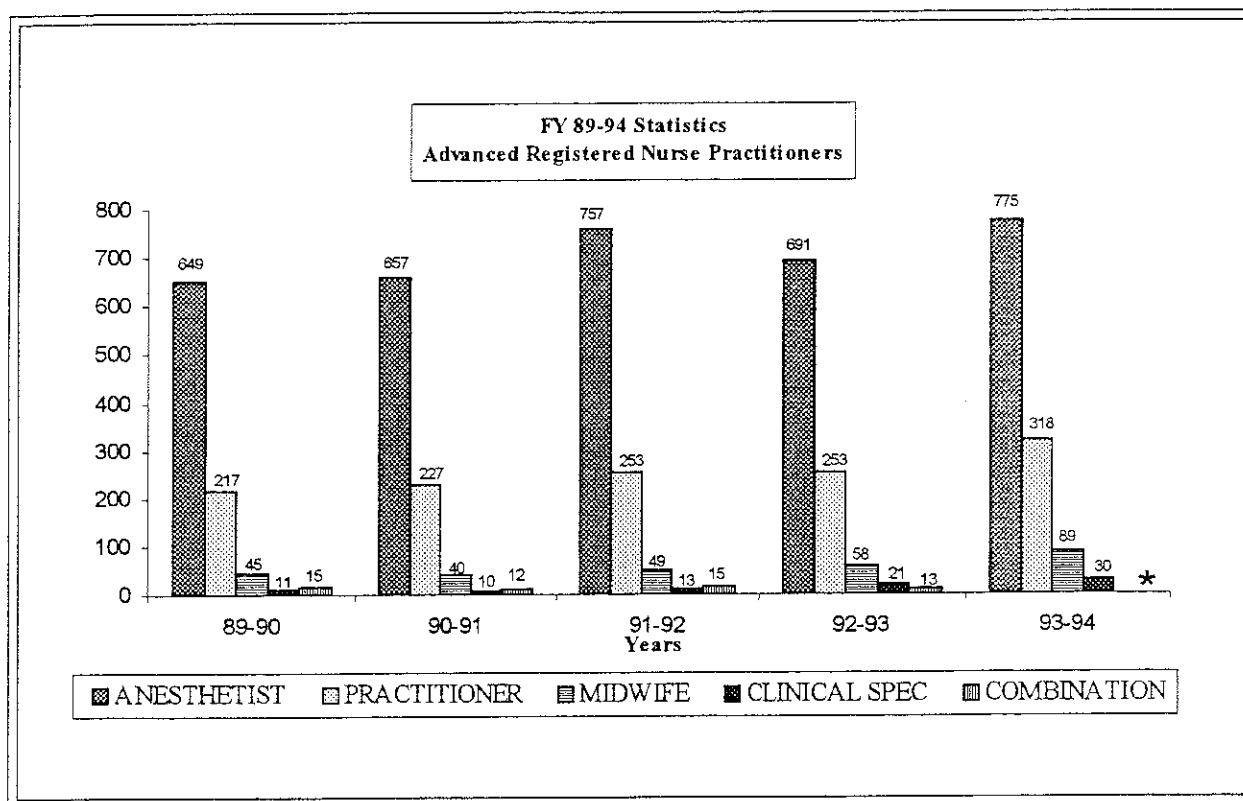
ARNP Registrations

Since 1978, *Kentucky Revised Statutes* 314.131(1) empower the Board to register and designate those persons qualified to engage in advanced nursing practice. KRS 314.011(6) and (7) define "advanced registered nurse practitioner" and "advanced registered nursing practice," respectively. The Kentucky Board of Nursing registers qualified individuals as advanced registered nurse practitioners (ARNP) designated either as nurse anesthetist, nurse-midwife, nurse practitioner, or nurse clinical specialist.

ADVANCED REGISTERED NURSE PRACTITIONER REGISTRATIONS CUMULATIVE AND NEW FY 93-94



(Continued)
ARNP Registrations



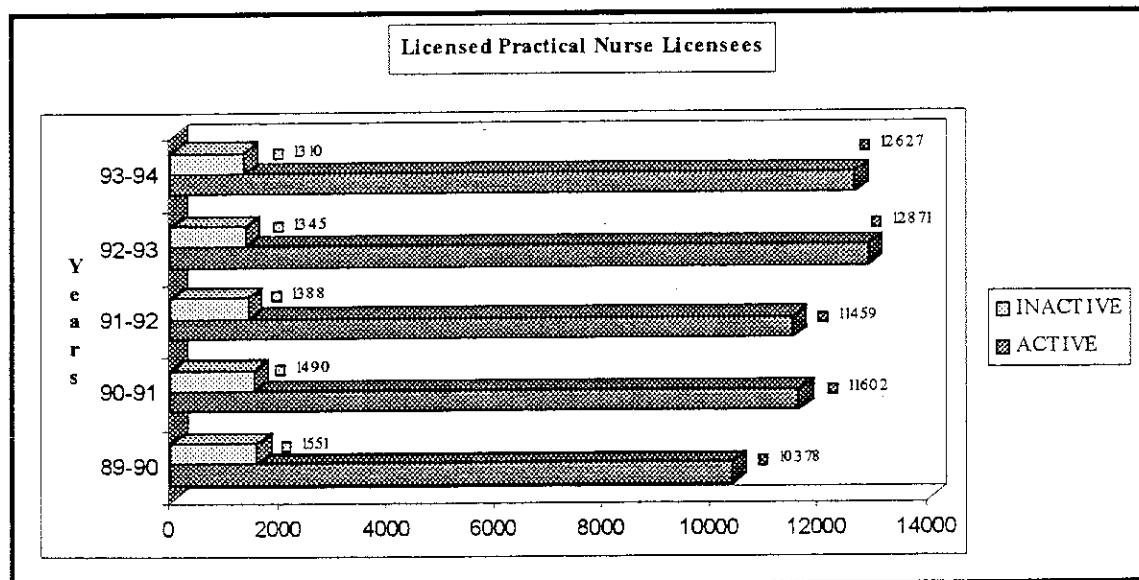
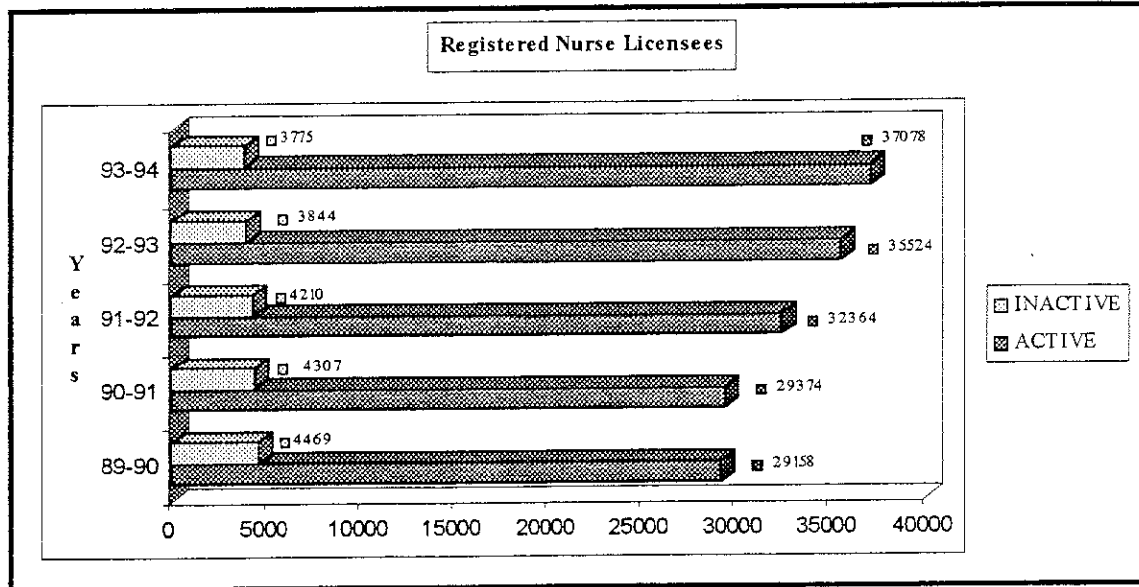
* The "Combination" category has been eliminated as a separate grouping. Those who hold "dual" registrations are now reflected in the individual registration categories they hold.

Licensure By Endorsement

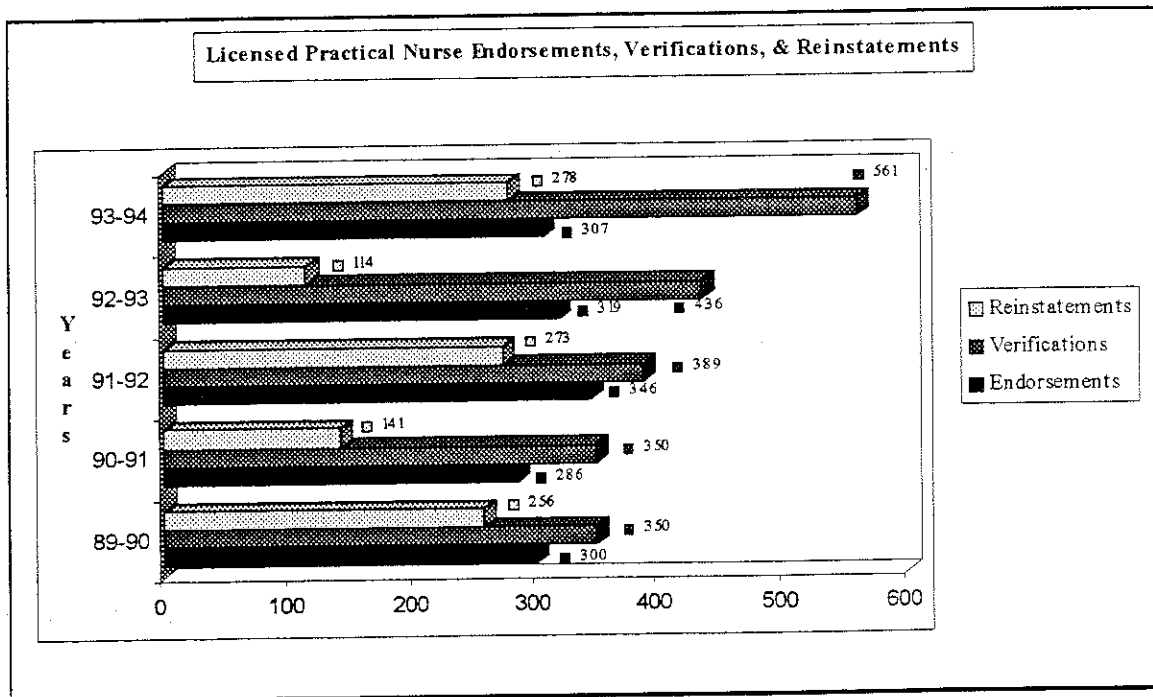
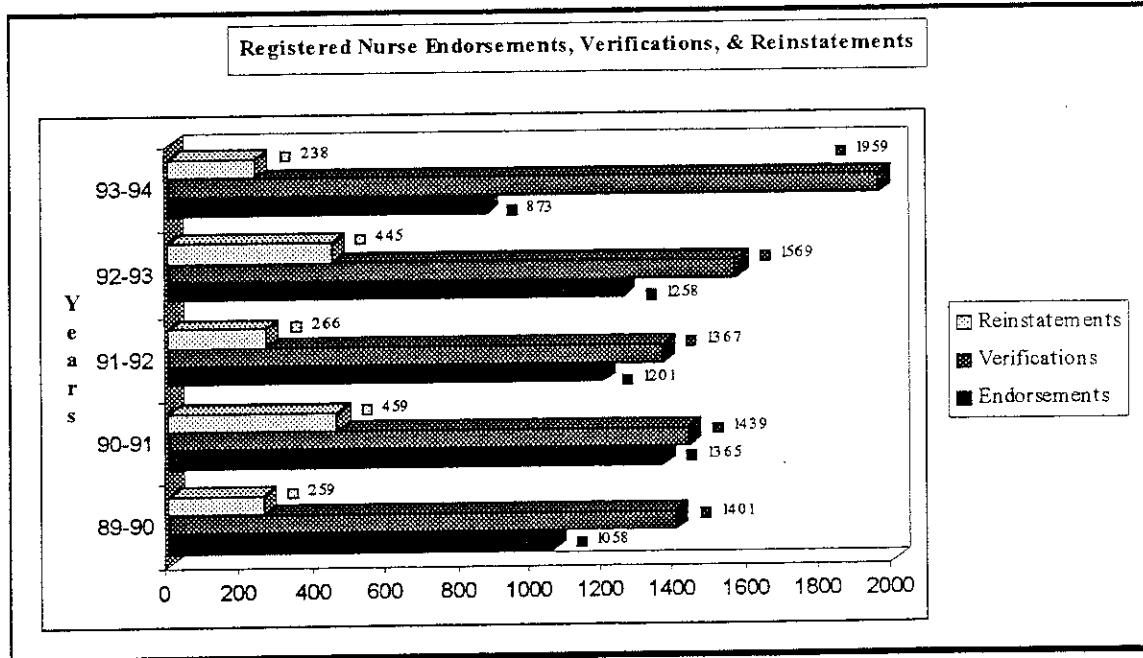
The *Kentucky Nursing Laws* (KRS 314.041(4) and 314.051(5) authorize the Board to issue licenses to practice nursing in the Commonwealth to those nurses who have ". . . passed the examination prescribed by the Board or its equivalent and been licensed . . . under the laws of another state, territory, or foreign country, if in the opinion of the Board, the applicant is qualified to practice professional nursing in this state." During FY 93-94, a total of 873 registered nurses and 307 practical nurses were granted active Kentucky nurse licensure via endorsement from another state, territory, or foreign country.

KENTUCKY NURSING LICENSES BY ENDORSEMENT: BY JURISDICTION OF ORIGINAL LICENSURE					
JURISDICTION OF ORIGINAL LICENSURE	LICENSURE TYPE		JURISDICTION OF ORIGINAL LICENSURE	LICENSURE TYPE	
	RN	PN		RN	PN
ALABAMA	16	4	MONTANA	1	2
ALASKA	0	1	NEBRASKA	4	1
AMERICAN SAMOA	—	—	NEVADA	1	0
ARIZONA	5	1	NEW HAMPSHIRE	1	1
ARKANSAS	6	0	NEW JERSEY	7	1
CALIFORNIA	23	8	NEW MEXICO	4	1
COLORADO	9	3	NEW YORK	27	5
CONNECTICUT	3	1	NORTH CAROLINA	22	4
DELAWARE	1	1	NORTH DAKOTA	2	0
DISTRICT OF COLUMBIA	2	0	OHIO	188	46
FLORIDA	34	14	OKLAHOMA	4	2
GEORGIA	19	6	OERGN	3	0
GUAM	—	—	PENNSYLVANIA	22	5
HAWAII	1	1	PUERTO RICO	—	—
IDAHO	1	1	RHODE ISLAND	1	0
ILLINOIS	66	29	SOUTH CAROLINA	9	2
INDIANA	66	53	SOUTH DAKOTA	3	0
IOWA	7	1	TENNESSEE	100	35
KANSAS	10	3	TEXAS	29	15
KENTUCKY	—	—	UTAH	2	0
LOUISIANA	4	1	VERMONT	1	1
MAINE	3	0	VIRGIN ISLANDS	—	—
MARYLAND	7	2	VIRGINIA	16	9
MASSACHUSETTS	10	0	WASHINGTON	7	4
MICHIGAN	19	8	WEST VIRGINIA	48	31
MINNESOTA	5	2	WISCONSIN	7	0
MISSISSIPPI	6	0	WYOMING	3	0
MISSOURI	22	2	OUT-OF-COUNTRY	16	0
TOTAL LICENSEES ISSUED BY ENDORSEMENT				873	307

Licensure Statistics FY 89-94



(Continued)
 Licensure Statistics
 FY 89-94



(Continued)
 Licensure Statistics
 FY 89-94

