

**THE COMMONWEALTH OF KENTUCKY
BOARD OF NURSING**

**ANNUAL REPORT
Fiscal Year 1992-1993**

**Prepared by Staff of the
Kentucky Board of Nursing
October 1993**

KENTUCKY BOARD OF NURSING
312 Whittington Parkway, Suite 300
Louisville, Kentucky 40222-5172
(502) 329-7000

COST OF PRINTING PAID FROM STATE FUNDS



KENTUCKY BOARD OF NURSING

312 Whittington Parkway, Suite 300
Louisville, Kentucky 40222-5172

(502) 329-7000

BRERETON C. JONES
GOVERNOR

October 15, 1993

The Honorable Brereton C. Jones
Office of the Governor
Commonwealth of Kentucky
State Capitol Building
Frankfort, KY 40601

Dear Governor Jones:

The Board and staff of the Kentucky Board of Nursing are pleased to submit the Annual Report for Fiscal Year 1992-93.

The following pages reflect the intense work of the Board during the past year. We are appreciative of the support and assistance provided by you and your staff, as we strive to assure that safe and effective nursing care is provided by nurses for the citizens of the Commonwealth.

Very sincerely yours,

ROBERTA G. SCHERER, BSN, RN
PRESIDENT

By: Sharon M. Weisenbeck, MS, RN
Executive Director

dc

Table of Contents

	PAGE
LIST OF TABLES	3
ACKNOWLEDGEMENTS	5
PREFACE	7
PART I. BOARD OF NURSING COMPOSITION, STRUCTURES AND OPERATIONS	
Board of Nursing Structures and Operation	9
Board of Nursing Membership and Activities	11
Board of Nursing Committees and Councils	
Advisory Council	12
Nurse Practice Council	12
Board Committees and Membership	13
Board of Nursing Organizational Charts	
Program	14
Staff	15
Board of Nursing Administrative Staff	16
State Government Advisors	17
Financial Report	18
PART II. BOARD OF NURSING INVOLVEMENTS AND LEADERSHIP ACTIVITIES	
Board Involvements and Leadership Activities	19
Board Appointed Representatives	21
PART III. BOARD ADMINISTRATIVE PROGRAMS	
Nursing Education	
Continuing Education	23
Prelicensure Nursing Education Programs	24
Nursing Practice	24
Nursing Incentive Scholarship Fund (NISF)	25
Investigation and Disciplinary Action	26
Kentucky Administrative Regulations	28
PART IV. LICENSURE AND REGISTRATION ACTIVITIES	
Nurse Credentials and Licensure Requirements	29
Licensure Examinations	30
Licensure by Endorsement	31
Advanced Registered Nurse Practitioners	32
Kentucky Nurse Licensees	32
APPENDIX A. OPERATIONAL DEFINITIONS	61
APPENDIX B. STATEMENT OF PHILOSOPHY AND LONG RANGE PLAN	65

List of Tables

	PAGE
1. Approved Providers of Mandatory Continuing Education by Category, 1992-93	35
2. Prelicensure Programs of Nursing Approval Status & Number of Graduates by Program Type, 1992-93	39
2a. Kentucky Prelicensure Program of Nursing Graduates, FY 84 - FY 93	40
2b. Comparative Data: Kentucky Prelicensure Program of Nursing Graduates, FY 89 - FY 93	41
3. NCLEX* Pass-Rates of First Time Examination Writers by Program, FY 93	42
4. Comparative NCLEX Pass Rates of First Time Examination Writers: Kentucky and All U.S. Jurisdictions, FY 93	44
5. Kentucky Board of Nursing Disciplinary Actions, FY 93	45
6. Advanced Registered Nurse Practitioner (ARNP) Registrations, FY 93 and Cumulative	46
7. Licensure Totals By Licensure Type and Status, 1992-93	47
8. Kentucky Registered Nurses By Highest Educational Level, FY 93	48
9. Kentucky Registered Nurse Licensees by County of Residence and Educational Data, FY 93	49
10. Kentucky Board of Nursing Endorsement/Verification Activity, FY 93	51
11. Kentucky Nursing Licenses Issued By Endorsement: By Jurisdiction of Original Licensure, FY 93	52
12. Kentucky Nurse Licensees by Type of License and County of Residence, FY 93	53
13. Kentucky Nurse Licensees by County of Residence and Employment Data, FY 93	54
14. Kentucky Board of Nursing Ten Year Comparative Data Summary, FY 84 - FY 93	56

* National Council Licensure Examination

Acknowledgments

The Kentucky Board of Nursing is pleased to present the 1992-93 Annual Report. This report reflects the ongoing commitment to ensure safe and effective nursing services for the citizens of the Commonwealth. Many governmental entities have directed concerted efforts toward the continued improvement of nursing education and nursing services. They include the following:

KENTUCKY GENERAL ASSEMBLY
LEGISLATIVE RESEARCH COMMISSION
OFFICE OF THE GOVERNOR
GOVERNOR'S OFFICE FOR POLICY AND MANAGEMENT
OFFICE OF THE ATTORNEY GENERAL
OFFICE OF AUDITOR OF PUBLIC ACCOUNTS
KENTUCKY HIGHER EDUCATION ASSISTANCE AUTHORITY
CABINET FOR FINANCE AND ADMINISTRATION
DEPARTMENT FOR FACILITIES MANAGEMENT
OFFICE FOR INVESTMENT AND DEBT MANAGEMENT
CABINET FOR WORKFORCE DEVELOPMENT
CABINET FOR HUMAN RESOURCES
DEPARTMENT OF PERSONNEL
COUNCIL ON HIGHER EDUCATION
DEPARTMENT OF INFORMATION SYSTEMS
KENTUCKY INFORMATION SYSTEMS COMMISSION
DEPARTMENT FOR LIBRARIES AND ARCHIVES

In addition, private agencies, professional and voluntary associations, and individuals have invested time and energy in support of the activities of the Board of Nursing. Likewise, the statutory mandates of the Board of Nursing have been met through the contributions by the members of the Advisory Council to the Board and the Nurse Practice Council, and volunteer committee members and staff to the Board. With the dedicated assistance provided by these groups and individuals, the mission of the Board was accomplished with dispatch. Appreciation is expressed for this interest, cooperation, and support to achieve sound regulatory practices in the interest of public protection for the citizens of the Commonwealth of Kentucky.

Preface

The Kentucky Board of Nursing is the state government agency authorized by *Kentucky Revised Statutes Chapter 314 (Kentucky Nursing Laws)* to approve and regulate nursing education and practice, to administer licensure examinations and license qualified graduates of approved prelicensure programs of nursing, to approve providers of continuing education, to license qualified nurse applicants, to oversee scholarship program, and to register and designate qualified advanced registered nurse practitioner applicants.

Four major goals provide guidance in fulfilling the statutory mission of the Board of Nursing. The 1992-93 Annual Report of the Board of Nursing summarizes the functions carried out by the Board to accomplish its mission and goals. The major programs and activities of the Board of Nursing are encompassed within the mission and goals as described in this Report and include: prelicensure nursing education, mandatory continuing education, nursing scholarship program, nursing practice, credentials and licensure, investigation and disciplinary action, administrative regulations of the Board, office operation, and state and national involvements. Information is also provided on agency structures and finances.

Information contained throughout this 1992-93 Annual Report of the Board of Nursing shows the depth and scope of the activities of Board members and staff, and it highlights the multi-faceted involvements of the Board of Nursing. The Report information documents that the Board of Nursing is achieving its statutory mission to protect the public by licensing and registering only those individuals who are competent and effective as nurse licensees.

The ongoing development and implementation of sound regulatory practices in the interest of public protection for the citizens of the Commonwealth of Kentucky is a dynamic process. The Long Range Plan 1993-1997 document (included in Appendix B) sets forth the goals and strategic approaches to meet the continuing need for protection of the public as mandated by the statutory mission of the Board.

Sharon M. Weisenbeck
Executive Director
Kentucky Board of Nursing

PART I

Board of Nursing Composition, Structures & Operations

MEETINGS

All meetings of the Board and its committees and councils were held in open session except for the few exemptions as allowed in the open meetings law. The meetings were advertised in the Board communications with licensees and the public as required. In total, the Board held one special and seven regular meetings including the annual meeting. The standing and ad hoc committees of the Board, serving in an advisory capacity, continued to expedite the Board decision making processes. The composition of the committees included volunteer members who provided a broader based perspective and viewpoint of interested parties and groups affected by regulatory practices. (See p. 11 for specific meeting dates.)

The orientation program, as expanded in 1986, was continued. A dinner meeting for all Board, committee and council members was held as part of the orientation program. This general session included a discussion of regulatory issues and information on Board structures and operation. In addition, sessions held at the time of the first meeting of the various groups enhanced the orientation for each group by focusing on specific programs and issues. (See pp. 12-13 for committee composition and meeting dates.)

FINANCIAL OPERATIONS

In a time of continuing fiscal constraint, the finances of the Board were again monitored carefully. As part of the budgetary planning process, revenues and expenditures were projected for a five year period, and the past ten year finances of the Board were reviewed. Additionally, investment of the agency's fund balance, as authorized by the revision to the *Nursing Practice Act* passed by the 1986 General Assembly, was diligently carried out according to approved procedures of the Office for Investment and Debt Management. (See p. 18 for agency financial report.)

PERSONNEL OPERATIONS

In compliance with the enactment of the 1986 Personnel Omnibus Bill, which mandated revisions to KRS Chapter 18A, the Kentucky Employee Performance Evaluation System, implemented during the 1987 year, was once again refined by staff managers and supervisors. This refinement of the system included participation in the audits of staff evaluations performed by the Department of Personnel.

The commitment of the members of the Board and the dedication of its staff continued in unabated fashion. (See p. 16 for listing of agency administrative staff.) Appreciation for this service by Board staff and members was expressed through the recognition programs of the agency and executive branch of state government. The following staff were awarded pins in recognition of years of service:

Connie Lusher, Credentials Consultant - 5 years
Sheron Schickinger, Word Processor Operator - 10 years
Bernadette Sutherland, Assistant Executive Director for Nursing Practice - 10 years

The Employee of the Quarter Recognition Program was initiated as a staff effort in January 1990. The following individuals were selected by their fellow staff persons as recipients of the award during the past year:

Cara Straub, Credentials Clerk
Cheryl Weixler, Education/Practice Secretary
Paula Stone, Assistant Executive Director for Continuing Education

Retiring Board members Susan Hockenberger, ARNP, and Diane Payne, Citizen-at-Large, were honored and thanked for their service. Mary Ousley, RN, submitted her resignation in March 1993. These members, each completing one four-year term, contributed substantially by their very active participation in carrying out member responsibilities.

OPERATIONAL PLANNING

Through its study and planning activities, the Board continues to update the Long Range Plan which consists of three documents: 1) Statement on Mission, Broad Goals and Assumptions; 2) Strategic Plan 1993-1997; and 3) Operational Plan 1993-1995. The long range planning process includes not only updating of the plan but evaluation of the total agency operation as well. An Information Resources Plan, as mandated by the Kentucky Information Systems Commission, also was updated to provide continuing direction for efficiency in operations. Further, the plan for development of personnel resources, including the Affirmative Action Plan for the Board, was revised, and the biennial budget was revised to accommodate fiscal changes mandated by the 1992 Kentucky General Assembly. (See p. 17 for listing of state government advisory personnel.)

Kentucky Board of Nursing Membership & Activities

The members of the Kentucky Board of Nursing for the period ending June 30, 1993 included:

Kathleen Bellinger, RN
Louisville, KY
Term Expires 1995

Patricia Burge, RN
Louisville, KY
Term Expires 1995

Hazel Chappell, RN
Lexington, KY
Term Expires 1996

Debra Finneran, RN
Prospect, KY
Term Expires 1993

Karen Gee, LPN
Frankfort, KY
Term Expires 1995

Susan Hockenberger, ARNP
Louisville, KY
Term Expires 1993

Melda Sue Logan, RN
Jeff, KY
Term Expires 1996

Sue Milburn, RN
Danville, KY
Term Expires 1994

Diane Payne, Citizen-at-Large
Lexington, KY
Term Expires 1993

Roberta Scherer, RN
Ashland, KY
Term Expires 1994

Ruth Ann Steele, LPN
LaGrange, KY
Term Expires 1994

Sandra Thornton, LPN
Villa Hills, KY
Term Expires 1996

BOARD OFFICERS

Elected June 1993

PRESIDENT: Roberta Scherer
VICE PRESIDENT: Patricia Burge
SECRETARY: Sandra Thornton
FINANCIAL OFFICER: Sue Milburn

Immediate Past

Susan Hockenberger
Roberta Scherer
Karen Gee
Sue Milburn

Past

M. Susan Jones
Susan Hockenberger
Janice Oster
Wilma Jones

BOARD MEETINGS

The *Kentucky Nursing Laws* state that the Board shall meet at least annually. As listed below, the Board met eight times during fiscal year 92-93 for a total of ten days. The Board members also participated in other activities including examinations and committee meetings. Hearings were conducted by hearing panels which consisted of two Board members each. The members served equal time on the hearing panels. The estimated average time for each member to attend meetings, administer examinations, serve on hearing panels and represent the Board was 54 days for the year.

August 6, 1992	Regular Meeting
September 16, 1992	Advisory Council
October 8, 1992	Regular Meeting
December 3, 1992	Regular Meeting

February 18, 1993	Regular Meeting
April 22 & 23, 1993	Regular Meeting
June 17 & 18, 1993	Annual Meeting
June 30, 1993	Special Meeting

Advisory Council

The Governor appoints an advisory council to the board consisting of seven members to be selected one each from lists submitted by Kentucky Medical Association, Kentucky Hospital Association, Kentucky Association of Health Care Facilities, Kentucky Nurses Association, Kentucky State Association of Licensed Practical Nurses, Kentucky Dental Association and Kentucky Pharmacists Association. During 1992-93, the Advisory Council met on September 16, 1992. The members of the Advisory Council and their respective organizations for the period ending June 30, 1993 included:

<u>Membership</u>	<u>Organization</u>
Laura Stone, RPh	Kentucky Pharmacy Association
Mary Gail Wilder, RN	Kentucky Nurses Association
William K. Massie, MD	Kentucky Hospital Association
Elizabeth A. Fultz, LPN	Kentucky State Association of Licensed Practical Nurses
William B. Monnig, MD	Kentucky Medical Association
Brenda Williams, RN	Kentucky Association of Health Care Facilities
Ben E. Baldwin, DMD	Kentucky Dental Association
Kathleen Mary Bohan, SCN	Kentucky Assn of Not-for-Profit Homes & Services for the Aging

Nurse Practice Council

The Nurse Practice Council, as an advisory body to the Board of Nursing, has the duty of recommending standards in the performance of acts by advanced registered nurse practitioners (ARNP) which require additional education and are recognized jointly by the nursing and medical professions.

<u>Membership</u>	<u>Designation/Organization</u>
Larry Owens, ARNP	Advanced Registered Nurse Practitioner Anesthetist
Sheila Ward, ARNP	Advanced Registered Nurse Practitioner Midwife
Pamela King, ARNP	Advanced Registered Nurse Practitioner Practitioner
Kathleen Bellinger, RN	Kentucky Board of Nursing
Patricia Burge, RN	Kentucky Board of Nursing
John D. Noonan, MD	Kentucky Medical Association
Preston P. Nunneley, MD	Kentucky Board of Medical Licensure
Frank M. Gaines, Jr., MD	Kentucky Board of Medical Licensure
Richard L. Ross, RPh	Kentucky Board of Pharmacy

KBN Committees and Membership

STANDING COMMITTEES *

Education Committee

Sue Milburn, RN, Chairperson
Kathleen Bellinger, RN
Melda Sue Logan, RN
Ruth Ann Steele, LPN
Deborah Whitehouse, RN, RN Prelicensure Education
Jane Kelly, RN, LPN Prelicensure Education
Beverly Bone, RN, RN Continuing Education
Doris Ball, RN, LPN Continuing Education

Study & Planning Committee

Roberta Scherer, RN, Chairperson
Kathleen Bellinger, RN
Patricia Burge, RN
Sue Milburn, RN
Diane Payne, Citizen-at-Large
Sandra Thomton, LPN
Ruth Ann Steele, LPN Alternate

Practice Committee

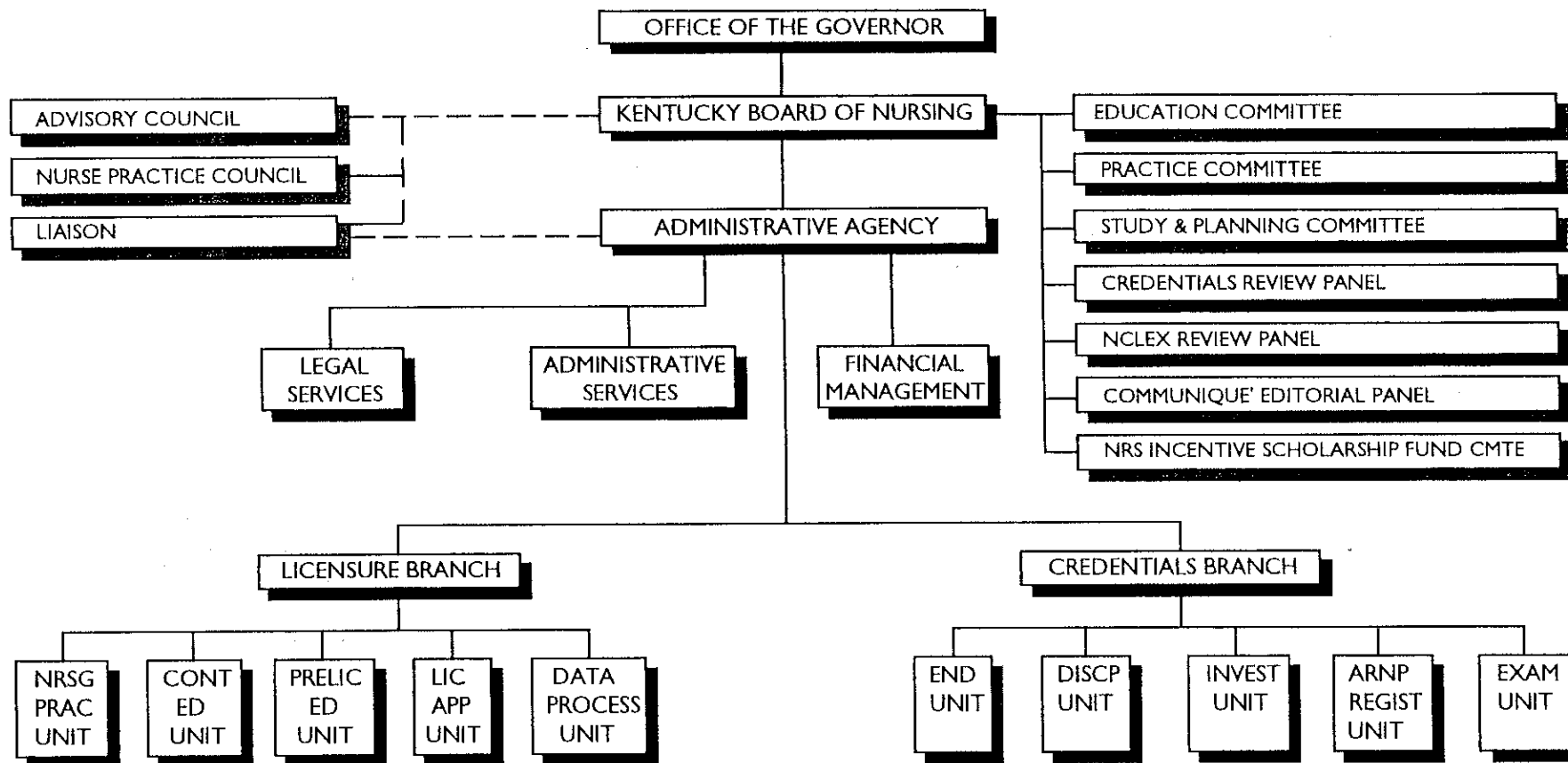
Patricia Burge, RN, Chairperson
Hazel Chappell, RN
Debra Finneran, RN
Karen Gee, LPN
Roberta Scherer, RN
Gail Carpenter, RN, RN Educator
Mary Kleber, RN, LPN Educator
Anne Powell, RN, KNA Representative
Sylvia Keller, LPN, KSALPN Representative

The standing committees of the Kentucky Board of Nursing each met five times during 1992-93. Committee meetings were one day in length.

* KBN President and Executive Director serve as Ex Officio members to all standing committees.

ORGANIZATION CHART
(PROGRAM)

REGULATION OF NURSES AND NURSING EDUCATION AND PRACTICE



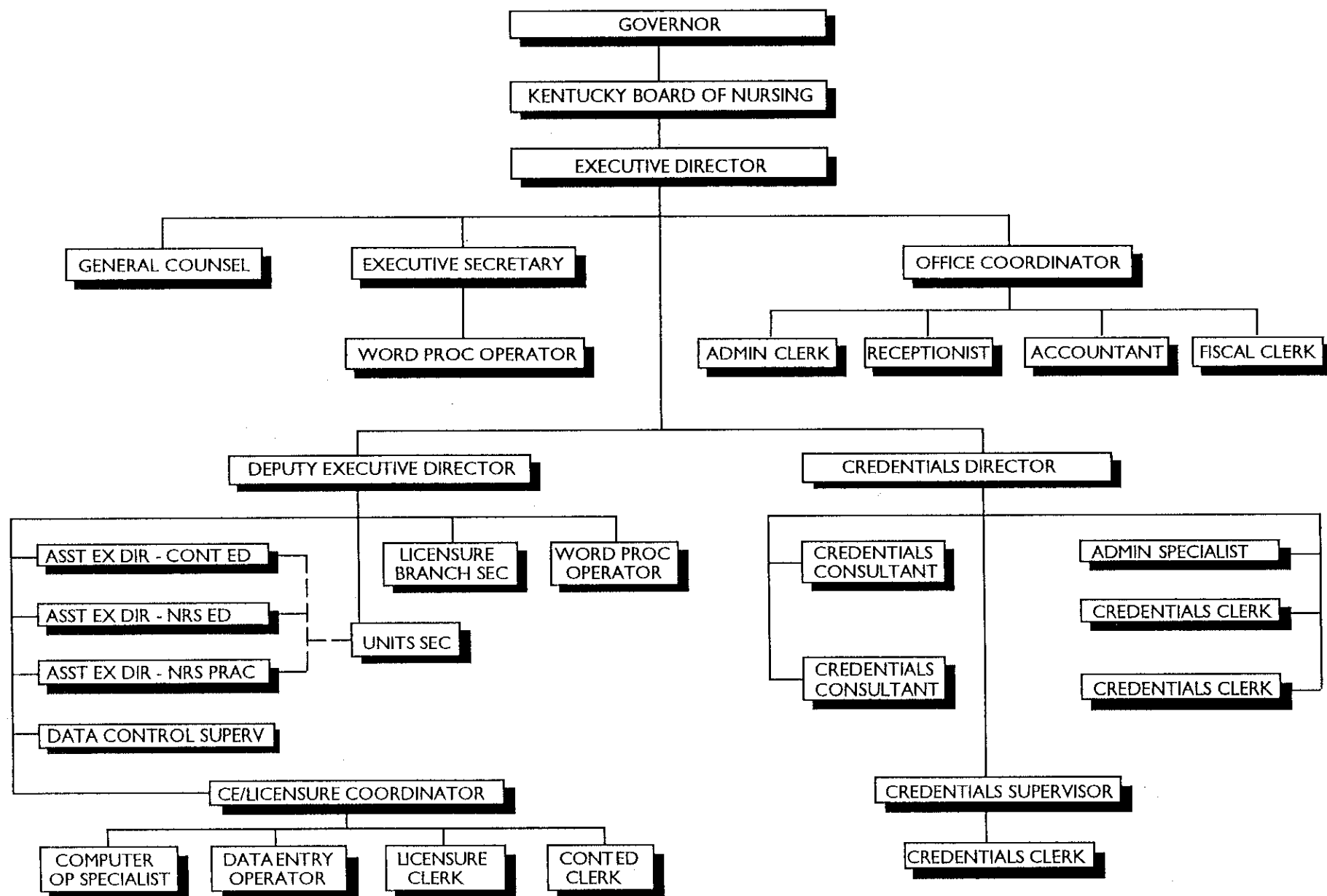
Legend: _____ Direct Relationship
 - - - - - Advisory Relationship

STATE GOVERNMENT STRUCTURE
 CABINET
 DEPARTMENT
 DIVISION
 BRANCH
 SECTION
 UNIT

Board of Nursing is placed under the General Government Cabinet.

ORGANIZATION CHART
(STAFF)

COMMONWEALTH OF KENTUCKY



Administrative Staff

The administrative staff of the Kentucky Board of Nursing for Fiscal Year 1992-93 included:

Name	Title
Sharon Weisenbeck, RN	Executive Director
Mary Romelfanger, RN	Deputy Executive Director
Nathan Goldman, JD	General Counsel
Alta Haunsz, RN	Credentials Director; Nursing Education Consultant (Reclassified 6/93)
Bernadette Sutherland, RN	Assistant Executive Director/Practice
Carol McGuire, RN	Assistant Executive Director/Education
Paula Stone, RN	Assistant Executive Director/Continuing Education
Sandra Johanson, RN	Credentials Consultant
Constance Lusher, RN	Credentials Consultant
R. Scott Bailey	Computer Programmer Analyst Senior
Andrew Blues	Computer Operations Specialist (Resigned 5/93)
Betty Buckman	Licensure Clerk Chief
Darlene Chilton	Licensure Branch Secretary (7/92-4/93); Administrative Specialist Senior (Reclassified 5/93)
Betty Cissell	Credentials Clerk Chief (Resigned 11/92)
Pamela Dean	Credentials Administrative Specialist Senior
Carolyn Jeffries	Fiscal Clerk Senior (7/92-4/93); Credentials Clerk Chief (Promoted 5/93)
Melissa Jeffries	Credentials Clerk Chief
Dolores Kopp	Office Coordinator
Sharon Minniefield	Word Processor Operator Senior
Beverly Owen	Computer Programmer Analyst Senior
Sheron Schickinger	Word Processor Operator Principal
Grace Scott	CE/Licensure Coordinator
Rosemary Smith	Accountant (7/92-4/93); Accountant Principal (Reclassified 5/93)
Cara Straub	Credentials Clerk Principal (7/92-3/93); Administrative Assistant (Reclassified 4/93)
Margaret Webb	Administrative Clerk Principal
Cheryl Weixler	Education & Practice Units Secretary Chief
Maria Wheat	Executive Secretary Senior
Mynette Withers	Receptionist Clerk Principal (7/92-5/93); Fiscal Clerk Senior (Transferred 6/93)
M. Lou Yates	Licensure Clerk Principal
Mary J. Yates	Credentials Supervisor (7/92-4/93); Administrative Specialist Senior (Reclassified 5/93)
Victor York	Computer Operations Specialist (Resigned 7/92)
Chris Cassell	Temporary Data Entry Operator Principal (7/92-11/92)
Judith Lock	Temporary Clerk Principal (7/92-12/92); Data Entry Operator Principal (12/92-1/93)
Connie Sutherland ..	Temporary Clerk Principal (8/92-11/92)

State Government Advisors

During the past year, the work of the Board and staff continued to be enhanced by the expertise of state government personnel who served in advisory and assisting capacities. They included:

Charlotte Hummel
Assistant Attorney General

Edgar C. Ross
Director of Accounts
Finance and Administration Cabinet

James Butler
Branch Manager
Division for Real Properties
Finance and Administration Cabinet

Roy Clifton
Branch Manager
Purchasing
Finance and Administration Cabinet

Bill Davies
Branch Manager
Planning/Engineering, Telecommunications
Finance and Administration Cabinet

Ronald Muchmore
Branch Manager
Pre-Audit, Division of Accounts
Finance and Administration Cabinet

Don Wade
Branch Manager
Local Services, Telecommunications
Finance and Administration Cabinet

Phil Nally
Division of Accounts
Finance and Administration Cabinet

Ron Cook
Printing Operations Administrator
Finance and Administration Cabinet

Sharon Parker
Buyer, Division of Purchases
Finance and Administration Cabinet

Patricia Pennington
Policy Advisor
Governor's Office for Policy and Management

Stephen Dooley
Commissioner
Department of Information Systems

Maria Bush
Agency Consultant
Department of Information Systems

Tommy Badgett
Financial and Investment Program Specialist
Office of Investment and Debt Management

Susan Harding Wunderlich
Regulations Compiler
Legislative Research Commission

Gregory Karambellas
Legislative Analyst
Legislative Research Commission

Kathy Gilliland
Analyst
State Records
Department for Libraries and Archives

Lowell W. Clark
Commissioner
Department of Personnel

Jim Stanley
Branch Manager
Classification and Compensation
Department of Personnel

Ron Smith
Agency Liaison
Classification and Compensation
Department of Personnel

Financial Report

Balance Forwarded July 1, 1992 \$910,563

Receipts

Program \$2,286,019
 Interest Income 49,821
 Non-Revenue (KNISF)* 28,530
 Total \$2,364,370
 Total Operating Fund \$3,274,933

Object Expenditures

	<u>Budget</u>	<u>Actual</u>
Personnel/Professional Contracts	\$1,061,900	\$1,030,828
Operating Expenses	361,900	366,657
Capital Outlay	32,900	24,957
Capital Project	53,000 **	120,754
Grants	108,800	106,294
Total	\$1,618,500	\$1,649,490
Available Balance June 30, 1993		\$1,625,443

Fee Schedule

Application Fees

	<u>RN</u>	<u>LPN</u>
Endorsement	\$60	\$60
Reinstatement	60	60
Active License Renewal ***	40	40
Inactive License Renewal ***	30	30
Examination		
Licensure	60	60
Administration	35	15
ARNP Registration	60	
ARNP Reinstatement	60	
ARNP Renewal **	35	
Duplicate License Letter	10	10
Verification to Other States	15	15

Continuing Education Approval Fees

Initial Provider Approval \$100
 Reinstatement of Provider Approval 100
 Renewal of Provider Approval ** 50
 Offering Approval Via Staff Review 35

* Kentucky Nursing Incentive Scholarship Fund

** NOTE: The Capital Project had a FY 92 carry forward balance of \$67,843 that allowed an expenditure of \$120,754 during FY 93.

*** Issued for a two-year period.

PART II

Board of Nursing Involvements and Leadership Activities

OVERVIEW

The continuing need for nurse manpower was the focus of many activities this past year. At both the federal and state levels, legislative and other proposals abounded, with particular attention being given to the appropriate use of assistive personnel. This issue was studied in depth by the Board with results that have significantly affected the use of assistive personnel relative to the medication nurse aide curriculum project with the Cabinet for Human Resources and the promulgation of an administrative regulation (201 KAR 20:400 Delegation of nursing tasks to unlicensed persons) on the use of assistive personnel. Maintaining the integrity of the regulation of nursing is an overriding concern, however, other relevant groups have demonstrated an increasing recognition of the existence and need for involvement of the regulatory body charged with the regulation of nursing in the Commonwealth.

NATIONAL HEALTH CARE ISSUES

Recent federal mandates affecting nursing regulation include the national practitioner data bank (1986 and 1988), persons with disabilities (1990), the training and evaluation of nurse aides (1987, 1989 and 1990) and nurse practitioner reimbursement (1991). As FY 93 drew to a close, the Board was in the process of promulgating a regulation to implement a new federal mandate (42 U.S.C. Section 300ee-2 note). This mandate requires states to develop guidelines for prevention of transmission of human immunodeficiency virus (HIV) and hepatitis B virus (HBV) by nurses.

With the advent of National Health Care Reform, it can be expected that federal mandates will increasingly involve the regulation of nursing. Thus, it is incumbent for the agency to be prepared to respond proactively, and to continue communication and liaison relationships with the various nursing, health, and governmental entities involved. The Board continued cooperation with local, state and national organizations involved with health data collection for nursing manpower needs. Also, data were released to the National Council of State Boards of Nursing on nurse licensure and disciplinary actions taken by the Board.

STATEWIDE HEALTH CARE ISSUES

Issues involving continued work with other groups included delegation and assistive personnel, faculty/student nurse ratios and faculty qualifications, school health, emergency medical technicians and services, physician assistants, advanced registered nurse prescription privileges, and pharmacy administrative regulations. These issues were discussed in depth at Board and committee meetings, discussion sessions, and public forums.

BOARD ACTIVITIES

Members and staff of the Board of Nursing actively participated in various local, state and national groups during the 1992-93 year. Representation to the following groups was continued: Kentucky

Council of Associate Degree Nursing, Kentucky Nurses Association Board of Directors, KNA Cabinet on Nursing Education, KNA Cabinet on Practice, KNA Cabinet on Continuing Education, Kentucky State Association of Licensed Practical Nurses, Kentucky Nursing Continuing Education Network, Advisory Committee of Nurses Assisting Nurses (NAN). In addition, individuals from the Board and staff served on the National Council of State Boards of Nursing Administration of Examination Committee and Nurse Information System Committee, as members of the Health Fraud Task Force of the Office of the Attorney General in Kentucky, as members of the Council on Licensure Enforcement and Regulation (CLEAR) committees, as a member of Kentucky Champions Against Drugs Statewide Action Group of the Office of the Governor, and as members of the Nurse Aide Training Advisory Committee of the Cabinet for Human Resources. (See complete listing on pp. 21-22.)

KBN members and staff actively participated in the National Council of State Boards of Nursing (NCSBN). The computerized adaptive testing (CAT) project was approved for implementation by the August 1991 NCSBN Delegate Assembly. This project, scheduled to begin in April 1994, will change the administration of NCLEX from a paper and pencil format to a computerized adaptive method. Each examination will be scheduled at the convenience of the candidate and tailored to measure individual candidate competency. These efforts, along with other Board member and staff involvements in NCSBN activities, have provided a strong voice from Kentucky at the national level.

The need for education about the regulation of nurses and nursing continues to be given priority by the Board members and staff. Both formal (annual conference, speeches, etc.) and informal (provision of data, information, etc.) methods are used to meet this ongoing need. In response to the Governor's Task Force on Health Care Access and Affordability, the Board submitted data on licensed nurses and advanced registered nurse practitioners along with documentation of nursing's numerous and diverse contributions to health care. Through these processes, not only was the potential of nurses as providers of essential health services clearly identified, but so too were the obstacles to the provision of such services.

Kentucky Board of Nursing Appointed Representatives

ADVANCED REGISTERED NURSE PRACTITIONER PRESCRIBING PRIVILEGES COALITION
Bernadette Sutherland, RN

AMERICAN NURSES' ASSOCIATION
Task Force on Assistive Personnel to the Registered Nurse
Sharon Weisenbeck, RN

CABINET FOR HUMAN RESOURCES
Kentucky Board of Family Health Care Providers
Annette Castle, RN

COMMISSION ON GRADUATES OF FOREIGN NURSING SCHOOLS
Credentials Committee
Sharon Weisenbeck, RN

COUNCIL ON LICENSURE ENFORCEMENT AND REGULATION (CLEAR)
Council of State Governments
Board of Directors
Mary Romelfanger, RN

Council of State Governments
National Certified Investigator Training (NCIT) Advisory Committee
Alta Haunsz, RN

Council of State Governments
Professional Discipline Program Sub-Committee
Alta Haunsz, RN

Council of State Governments
Nominating Committee
Alta Haunsz, RN

EMERGENCY MEDICAL SERVICES ADVISORY COMMITTEE
PREHOSPITAL NURSING WORKING GROUP
Bernadette Sutherland, RN

JEFFERSON COUNTY
Nurse Day Recognition Committee
Sharon Weisenbeck, RN

KENTUCKY COALITION ON AVAILABILITY OF NURSES
Mary Romelfanger, RN

KENTUCKY COUNCIL OF ASSOCIATE DEGREE NURSING
Carol McGuire, RN

KENTUCKY COUNCIL OF PRACTICAL NURSING
Ruth Ann Steele, LPN

KENTUCKY MEDICAL LICENSURE BOARD PHYSICIAN ASSISTANT ADVISORY COMMITTEE
Ellen Bailey, ARNP

KENTUCKY NURSES ASSOCIATION

Board of Directors
Susan Hockenberger, ARNP

Cabinet on Continuing Education
Paula Stone, RN

Cabinet on Nursing Education
Sue Milburn, RN

Cabinet on Nursing Practice
Bernadette Sutherland, RN

Nurse Day Committee
Sandra Johanson, RN

Planning Committee for Nursing Summit
Sharon Weisenbeck, RN

Strategic Planning Committee
Sharon Weisenbeck, RN

KENTUCKY NURSING CONTINUING EDUCATION NETWORK

Sue Milburn, RN

KENTUCKY STATE ASSOCIATION OF LICENSED PRACTICAL NURSES

Karen Gee, LPN

NATIONAL COUNCIL OF STATE BOARDS OF NURSING - MEMBER BOARD

Delegate Representative
Roberta Scherer, RN

Delegate Representative
Sharon Weisenbeck, RN

Alternate Delegate Representative
Kathleen Bellinger, RN

Alternate Delegate Representative
Mary Romelfanger, RN

Nurse Aide Competency Evaluation Program Committee
Sharon Weisenbeck, RN, Chairperson

Administration of Examination Committee
Alta Haunsz, RN

Computerized Adaptive Testing Implementation Team
Carol McGuire, RN

Computerized Adaptive Testing Readiness Criteria Panel
Sharon Weisenbeck, RN

OFFICE OF THE ATTORNEY GENERAL

Health Fraud Task Force
Bernadette Sutherland, RN

PART III

Board Administrative Programs

OVERVIEW

The programmatic functions of the Board of Nursing expanded not only in volume and complexity but also increased through new programs mandated by legislation. Additionally, the shortage of nurses has precipitated a need to expedite regulatory processes in an effort to conserve scarce manpower resources while at the same time maintaining standards to assure safe and effective care. A review of all regulatory procedures currently in effect was continued with the objective to both facilitate and enhance sound regulatory practices in view of budget restraints and workload. (The Kentucky administrative regulations governing agency activities are listed on p. 28.)

CONTINUING EDUCATION

Background

The Kentucky Board of Nursing is the Commonwealth agency legally authorized to approve providers of mandatory continuing education for nurses. In accordance with the *Kentucky Nursing Laws* (Kentucky Revised Statutes 314.073), the Board prescribes standards for the providers of nursing continuing education. The approval of providers of continuing education was initiated in 1981 to assure that continuing education offerings approved by the Board would be both available and accessible for nurses who were required to meet contact hour earnings for renewal of licenses for the first time in 1982. (See Table I for a listing of the 173 currently approved providers.)

The process for verification of continuing education earning by Kentucky nurse licensees consists of a post-renewal audit procedure. This process is used for verification of earning of both the 30 contact hour and the newly required 2 contact hour AIDS programming. The audit is conducted on a random basis and requires that those persons selected show documented evidence (certificate of attendance, transcript, grade report, etc.) of approved contact hour earning during their respective licensure periods.

A post-renewal audit to determine licensee compliance with continuing education earning requirements was conducted following the 1991 LPN and 1992 RN licensure renewal periods and will be conducted again following the 1993 LPN licensure renewal period. An average of 3 percent of the audited population has had disciplinary action by the Board for failure to comply with continuing education earning requirements.

In addition to those providers who were granted continued approval during the 1992-93 year, 10 new providers were approved while 3 providers ceased participation. At the close of the year on June 30, a total of 173 active providers of continuing education held approval by the Board. Geographically, these providers are located throughout 60 in-state communities and 5 other states.

Another major project is the ongoing implementation of the Acquired Immunodeficiency Syndrome (AIDS) mandatory education requirement enacted into law in 1990 for all nurse licensees. Board staff worked closely with staff of the Cabinet for Human Resources who approve content to meet the 2 hour requirement. This mutually cooperative effort has resulted in a more effective and efficient process for all affected health care licensees.

PRELICENSURE PROGRAMS OF NURSING

Background

The Kentucky Board of Nursing is the legally authorized body in the Commonwealth to approve programs of nursing preparing persons for eligibility for licensure as nurses. Through the provisions of the *Kentucky Nursing Laws* (KRS 314.011, 314.031, 314.111 and 314.131), the Board prescribes standards for educational institutions offering programs which prepare candidates for licensure as nurses. These standards include provisions for consultation, survey visits, review of Annual Reports and Faculty Summaries, and requests for and review of other special reports.

During 1992-93, the Board approved 3 new programs (1 practical nursing program, 1 associate degree nursing program, and 1 experimental - practical nursing to associate degree - nursing program). One practical nursing program closed during the year. Board staff conducted 11 program of nursing survey visits which were acted upon by the Board in FY 93. Any nursing education program determined to be out of compliance with a regulation of the Board was required to implement plans for corrective action within a specified time frame. There are currently 48 educational institutions which operate a total of 11 BSN, 26 ADN, and 25 LPN prelicensure programs of nursing. (See Table 2 for a listing of approved prelicensure programs and the number of program graduates during FY 93.)

Of critical concern to nurses, officials in the public and private sectors, and employers of nurses, is the ever increasing demand for nursing services. Since the 1989-90 academic year, data indicates a continued growth in nursing student enrollments and graduations.

As illustrated in Tables 2A and 2B, prelicensure programs of nursing in Kentucky reported a 19 percent increase in registered nurse graduates and a 1 percent increase in practical nurse graduates during 1992-93. There was a 25 percent increase in first-time writers for NCLEX-RN from fiscal year 1991-92 to 1992-93, and a 4 percent increase in NCLEX-PN first-time writers for 1992-93 in comparison with 1991-92. Kentucky educated first-time NCLEX-RN writers averaged a 95 percent pass rate during 1992-93 while NCLEX-PN first-time writers averaged a 94 percent pass rate (Tables 3 and 4). The average pass rates nationally for RN and PN first-time writers are about 92 percent and 91 percent respectively. Kentucky nursing educators are to be commended for this achievement.

NURSING PRACTICE

Background

The Board interprets the legal scope of nursing practice according to *Kentucky Revised Statutes* Chapter 314 and Board of Nursing Administrative Regulations in the determination of safe and effective nursing care for the citizens of the Commonwealth.

In response to inquiries requesting interpretation of the legal scope of nursing practice, the Board has published a total of 30 Advisory Opinion Statements (AOS) as guidelines for safe practice. During the past year, the Board issued 2 new AOS: "Cardiopulmonary/Respiratory Nursing Practice" and "School Nursing Practice." Additionally, responses to 23 letters requesting opinions on various nursing practice issues were handled through the work of the Practice Committee.

Five AOS were revised during FY 93: "The Role of the ARNP, RN and LPN in Gynecological Cancer Detection," "The Performance of Stapling for Superficial Wound Closure by RNs and the Removal of Staples and Sutures by Nurses," "Role of the RN First Assistant," "Roles of Nurses in the Implementation of Patient Care Orders," and "Employment of Students in Nursing."

Following its distribution for public comment, an administrative regulation on delegation of nursing activities to unlicensed persons was promulgated. Other issues currently under discussion include the educational and experiential preparation of registered nurses in the delivery of prehospital emergency care via ambulance services, and training of unlicensed personnel in the administration of select medications in children's residential treatment centers.

At the close of the year, the Practice Committee was in the process of studying various nursing practice issues including: educational and experiential preparation [via continuing education program(s)] of the RNs in prehospital emergency medical care; emergency medical services by LPNs; and "Health Services Protocol" - Draft, Department of Social Services, Program Development and Training Branch.

In accordance with provisions of the American with Disabilities Act, the *Kentucky Nursing Laws* authorize the Board to issue limited licenses to disabled but otherwise qualified applicants for licensure. As of June 1993, limited licenses were issued to 27 such individuals. The Board is implementing procedures to amend/delete the administrative regulation governing limited licensure, 201 KAR 20:115.

NURSING INCENTIVE SCHOLARSHIP FUND PROGRAM

The Nursing Incentive Scholarship Fund (NISF) Program was created to provide scholarship monies to applicants for prelicensure and graduate nursing education in order to increase the number of licensed nurses in medically underserved areas; to decrease the number of vacant licensed nurse positions in all service sectors, i.e., acute, long term, and home health; and to increase the pool of master's prepared registered nurses for faculty positions. Overall, there has been a highly favorable response to the NISF program by both applicants and sponsors who match the monies awarded through this program.

As of June 1993, again a high volume of application forms (1,215) were requested and 120 application forms were processed. Seventy scholarships were awarded for the 1993-94 school year. Of these, 30 recipients were eligible for continuation, and 40 first-time awards were made. Since the implementation of the NISF, there have been 48 recipients who have successfully completed a program of nursing and are presently working in the health care industry.

INVESTIGATION AND DISCIPLINARY ACTION

Background

The *Kentucky Nursing Laws* provide that the Board of Nursing may "deny, limit, revoke, probate or suspend any license to practice nursing issued by the Board or applied for . . . or to otherwise discipline a licensee or to deny admission to the licensure examination, or to require evidence of evaluation and therapy"

The Board continues its efforts to make the public aware of the investigatory and disciplinary procedures and to emphasize the legal requirement and importance of reporting nurses who are suspected of engaging in unsafe or illegal practices.

All disciplinary actions are published in the Kentucky Board of Nursing quarterly newsletter, the *Communique*. The Board participates in the National Council of State Boards of Nursing Disciplinary Data Bank which provides monthly reports to all participants of disciplinary action taken by boards of nursing throughout the United States. These reports are received in the Board office on a monthly basis and routinely reviewed as a part of the procedure for licensure application review.

Board "Guidelines for Determining the Need for Disciplinary Action on KRS 314 Violations and Conviction Records" were used for reviewing applications of those licensure applicants who have had a previous criminal conviction record, or previous disciplinary action in another jurisdiction. These guidelines have assisted with the review of conviction records, and provided direction to staff for handling these situations in a timely manner.

A major issue facing the Board of Nursing concerns the processing of complaints against nurses who are impaired by chemical use and/or stress. In its continuing study of this matter, the Board developed a survey tool which was sent to nurses who have completed terms for disciplinary action taken on their licenses during the preceding five years. The purpose was to collect data to assist the Board in making decisions regarding disciplinary action in cases involving impairment. The Board is reviewing the questionnaire results for internal study and possible publication of aggregate data. Significant issues are facing the profession of nursing with attendant implications for the regulation of nurses. The members and staff of the Board of Nursing look forward to continued cooperative efforts with the Kentucky Nurses Association for resolution of these issues to ensure safe practice of nursing for the citizens of the Commonwealth. Again, the Board and staff members are appreciative of the many individuals and groups whose interest, cooperation and support assist the Board in achieving sound regulatory practices in the interest of public protection.

Complaint Activity

The total number of complaints received increased by 60 percent during the past year. The caseload has continued to be heavy due to the large increase in the number of complaints and the volume carried forward from the previous year. Complaints were entered for 28 individuals who failed to meet continuing education requirements for renewal of license and 290 for new licensees who did not meet the requirement for AIDS education within a six month period as

specified in KRS Chapter 214. Administrative regulations relevant to the investigation and disposition of complaints and procedures for disciplinary hearings have been followed in the disposition of complaints through the use of hearings, agreed orders, and consent decrees. Records for 224 applicants who indicated previous criminal convictions were reviewed by a Board member before being processed.

Disciplinary Action Activity

Disciplinary Actions

The Board entered 90 decisions, approved 80 agreed orders, and ratified 109 consent decrees for licensees and/or applicants which resulted in the actions illustrated in Table 5. Staff recommendations for removal from probation were approved by the Board. During the year, there were 4 appeals of disciplinary orders of the Board, and 2 appeals were carried forward from 1991-92.

Probation Activity

Additional staff time was required due to the 22 percent increase in the number of licensees with limited or probated licenses who were mandated to meet with a representative of the Board on a quarterly or semiannual basis, have written reports submitted during the probationary period, and meet various other requirements.

During 1993-94, disciplinary action will need to be considered for both the current caseload of 296 active cases and for the complaints projected to be received during the coming year.

Credentials Review Panel

A Credentials Review Panel, composed of two Board members, continued to consider those matters related to licensure credentials and disciplinary investigation and action not otherwise covered by applicable laws and regulations or guidelines set by the Board of Nursing. This panel's recommendations regarding cases which fall outside of available precedent provided direction to staff and aid in the processing of complaints.

KENTUCKY ADMINISTRATIVE REGULATIONS

During fiscal year 1992-93, administrative regulation activity initiated by the Board, reviewed by the Advisory Council and approved by the Legislative Research Commission included eleven revised regulations; one new regulation; and two repealed regulations.

<u>Number & Title</u>	<u>Regulation</u>	<u>Effective Date</u>
201 KAR 20:056	Advanced Registered Nurse Practitioner Registration	9/91
201 KAR 20:057	Scope and Standards of Practice of Advanced Registered Nurse Practitioners	9/87
201 KAR 20:070	Licensure by Examination	2/93
201 KAR 20:085	Licensure Periods	6/85
201 KAR 20:090	Temporary Work Permit	2/93
201 KAR 20:095	Inactive Nurse Licensure Status	2/93
201 KAR 20:110	Licensure by Endorsement	2/93
201 KAR 20:115	Limited Licensure	11/87
201 KAR 20:161	Investigation & Disposition of Complaints	4/91
201 KAR 20:162	Procedures for Disciplinary Hearings Pursuant to KRS 314.091	4/91
201 KAR 20:200	Definitions for Mandatory Continuing Education	7/92
201 KAR 20:205	Standards for Continuing Education Offerings	Repealed
201 KAR 20:210	Standards for a Program of Continuing Education	Repealed
201 KAR 20:215	Contact Hours	7/92
201 KAR 20:220	Provider Approval	7/92
201 KAR 20:225	Reinstatement of License	2/93
201 KAR 20:230	Renewal of Licenses	2/93
201 KAR 20:240	Fees for Applications and for Services	11/87
201 KAR 20:250	Definitions for Registered and Practical Nurse Prelicensure Programs of Nursing	2/93
201 KAR 20:260	Organization and Administration Standards for Prelicensure Programs of Nursing	6/85
201 KAR 20:270	Programs of Nursing Surveys	11/87
201 KAR 20:280	Standards for Prelicensure Registered Nurse and Practical Nurse Programs	6/85
201 KAR 20:290	Standards for Prelicensure Registered Nurse and Practical Nurse Extension Programs	11/87
201 KAR 20:300	Standards for Prelicensure Experimental Programs of Nursing	6/85
201 KAR 20:310	Faculty for Prelicensure Registered Nurse and Practical Nurse Programs	2/93
201 KAR 20:320	Standards for Curriculum of Prelicensure Registered Nurse Programs	11/87
201 KAR 20:330	Standards for Curriculum of Prelicensure Practical Nurse Programs	3/89
201 KAR 20:340	Students in Prelicensure Registered Nurse and Practical Nurse Programs	6/85
201 KAR 20:350	Education Facilities and Resources for Prelicensure Registered Nurse and Practical Nurse Programs	6/85
201 KAR 20:360	Evaluation of Prelicensure Registered Nurse and Practical Nurse Programs	11/87
201 KAR 20:370	Applications for Licensure and Registration	11/87
201 KAR 20:380	Standards for Refresher Course Approval	11/87
201 KAR 20:390	Nursing Incentive Scholarship Fund	5/92
201 KAR 20:400	Delegation of Nursing Tasks to Unlicensed Persons	1/93

PART IV

Licensure and Registration Activities

LICENSURE AND REGISTRATION REQUIREMENTS

Background

The primary mission of the Board of Nursing is public protection. This mission continued to be accomplished through the licensure and registration of only those applicants who met statutory and regulatory requirements. Administrative regulations relevant to licensure requirements have been followed during the past year.

Registered Nurse/Advanced Registered Nurse Activity

Given the continuing national and statewide concern regarding the shortage of licensed nurses, the fiscal year licensure statistics have been given careful scrutiny. The reported highest educational level for the registered nurse (RN) population is noted in Table 8. Although the number of RNs holding active Kentucky licensure increased by 160 in FY 93, the total number of RN licensees decreased by 5.6 percent in FY 93 following an 8.5 percent increase in FY 92 (Table 14). The number of advanced registered nurse practitioners (ARNPs) decreased from 1,087 to 1,036 with the largest percentage decrease by specialty type occurring in nurse anesthetist registrations (8.7 percent). Table 6 illustrates the ARNP registrations by type for both the total population and those newly registered in FY 93.

Licensed Practical Nurse Activity

While the number of new graduates from Kentucky prelicensure licensed practical nurse (LPN) programs remained steady in FY 93, the total number of LPNs licensed in the Commonwealth increased by 10.6 percent during FY 92 (following a 12 percent increase the previous year).

Active Licensure Activity

The percentage of licensees holding active licensure status (which allows for active practice in Kentucky) has remained stable during the past two fiscal years. As illustrated in Table 7, active licensure is held by 91 percent of the licensed practical nurse population, and 89 percent of the registered nurse population. (These figures fluctuate an average of 1-2 percent annually.) This high percentage of licensure population in the available employment pool is consistent with national nursing licensure population norms.

Verification/Endorsement Activity

A review of verification and endorsement data (Table 10) reveals that Kentucky continues to be a "supplier" state, with more licensees being verified for licensure in other jurisdictions (verification total 2,005) than being endorsed for Kentucky licensure from other jurisdictions (endorsement total 1,577). As illustrated in Table 14, this pattern has been consistent for the past decade.

Temporary Work Permit Activity

During 1992-93, 1,139 registered nurse and 328 licensed practical nurse applicants for licensure by endorsement (Table 10), and 2,004 registered nurse and 768 licensed practical nurse applicants for licensure by examination, were issued temporary work permits to expedite nursing employment. (Permits are issued within five days of receipt of a completed application form.)

LICENSURE EXAMINATIONS

Background

Since the initiation of national licensure examinations for nurses in the late 1940s, the Kentucky Board of Nursing has adopted officially as its licensure examination, those examinations provided by the National League for Nursing Test Service and most recently by the CTB/McGraw-Hill Test Service, under the auspices of the National Council of State Boards of Nursing, Inc. (NCSBN). Prior to the July 1982 examination, the title of the examination was the State Board Test Pool Examination (SBTPE). Since 1982, the examination is entitled the National Council Licensure Examination (NCLEX), with the designation of either RN for registered nurses or PN for practical nurses. The licensure examinations (NCLEX) are scored by using a criterion-referenced scoring system instead of a norm-referenced scoring system. Effective with the October 1988 examination, the National Council of State Boards of Nursing instituted pass/fail reporting of examination results; scores are no longer reported by the test service.

The *Kentucky Nursing Laws* state, "An applicant shall be required to pass a written examination in such subjects as the board may prescribe." This applies to applicants for registered nurse licensure and applicants for practical nurse licensure. The Kentucky Board of Nursing administers the National Council Licensure Examination to both registered nurse and licensed practical nurse applicants. Table 4 illustrates performance data for first time examination candidates in Kentucky compared to candidates in all U.S. licensure jurisdictions.

Finally, it should be noted that as has been the case for the past several years, the fiscal year pass-rate of graduates from Kentucky programs (Table 3) again exceeded the national percentage pass-rate of all graduates who took the licensure examination for the first time (Table 4).

Licensure Testing: NCLEX and NCLEX-CAT®

The comprehensive National Council Licensure Examination for registered nurse licensure, based on a revised test plan, consists of an examination with four parts with one score/result reported. Candidates who do not pass the comprehensive NCLEX examination must retake all four parts. There is no limit to the number of times a candidate may take the examination. The 1988 NCSBN Delegate Assembly authorized the investigation of computerized adaptive testing (CAT) for nursing licensure examinations. Large scale CAT field tests were conducted in July 1990 and February 1991. At the annual meeting in August 1991, delegates directed the NCSBN to proceed with implementation of CAT for future licensing examinations. Beta testing was carried out in June 1993 with the implementation of CAT for all candidates scheduled for April 1994. Staff has participated in training for the Member Board Office System (MBOS) in preparation for the CAT administration of the examination.

The Kentucky Board of Nursing has continued to follow the National Council of State Boards of Nursing procedure for responding to the needs of disabled candidates. This procedure provides for modification of the administration of the examination to accommodate candidates with disabilities in compliance with the U.S. Rehabilitation Act of 1973 and the Americans With Disabilities Act.

Four Kentucky nurses were selected by the National Council of State Boards of Nursing to be on the Panel of Content Experts for registered nurse licensure, and five served on the Panel of Content Experts for practical nurse licensure during 1992-93. One Kentucky nurse was chosen to be on the Logical Job Analysis Panel. In addition, one staff person served on the NCSBN Administration of Examination Committee and one on Examination Committee - Team 2.

Examination Candidates

As illustrated in Table 14, the past year has shown a 25 percent increase in the number of examination candidates (first time writers) for registered nurse licensure, while the number of examination candidates (first time writers) for licensed practical nurse licensure increased by 4 percent from the previous year.

LICENSURE BY ENDORSEMENT

Background

The *Kentucky Nursing Laws* (KRS 314.041(4) and 314.051(5) authorize the Board to issue licenses to practice nursing in the Commonwealth to those nurses who have "... passed the state board test pool exam or an equivalent examination approved by the board and been licensed ... under the laws of another state, territory or foreign country, if in the opinion of the board, the applicant is qualified to practice professional nursing in this state."

KRS 314.101(3) states, "A temporary work permit may be issued by the board to persons who have completed the requirements for, applied for and paid the fee for licensure by examination or endorsement. Temporary work permits shall be issued only for the length of time required to process applications for endorsement or to conduct and determine the results of examinations and shall not be renewed. No temporary work permit shall be issued to an applicant who has failed the licensure examination."

Endorsement Activity

As depicted in the Endorsement/Verification Activity Table (Table 10), during fiscal year 1992-93, 311 more RNs and 117 more LPNs left than came to Kentucky. The Commonwealth of Kentucky continues to be a supplier state for nursing manpower. Table 11 identifies the number of endorsements from specific licensure jurisdictions.

ADVANCED REGISTERED NURSE PRACTITIONERS

Background

Since 1978, *Kentucky Revised Statutes* 314.131(1) empower the Board to register and designate those persons qualified to engage in advanced nursing practice. KRS 314.011(6) and (7) define "advanced registered nurse practitioner" and "advanced registered nursing practice," respectively. The Kentucky Board of Nursing registers qualified individuals as advanced registered nurse practitioners designated either as nurse anesthetist, nurse-midwife, nurse practitioner, or nurse clinical specialist.

Advanced Registered Nurse Practitioner Activity

During the past year, 141 individuals were registered with the Board as advanced registered nurse practitioners. A summary report of advanced registered nurse practitioner registration is shown in Table 6.

KENTUCKY NURSE LICENSEES

Background

The Kentucky Nursing Laws provide that: "The license of every person under the provisions of KRS 314 . . . shall be renewed at least biennially" By administrative regulation 201 KAR 20:080, the Kentucky Board of Nursing has determined that the licensure period shall be November 1 to October 31. KRS 314.031 states, "It shall be unlawful for any person to call or hold himself out as or use the title of nurse or to practice or offer to practice as a nurse unless licensed under the provision of KRS 314"

Licensure Activity

Table 7 depicts licensure totals for the fiscal year, and Tables 11-13 illustrate the distribution and employment of Kentucky nurse licensees.

Kentucky Board of Nursing

Tables

TABLE I
APPROVED PROVIDERS OF MANDATORY CONTINUING EDUCATION
BY CATEGORY
1992-93

CATEGORY 1: PROFESSIONAL NURSING ORGANIZATIONS (12)

ILLINOIS:

CHICAGO	American Association of Neuroscience Nurses	(312) 993-0043
PARK RIDGE	American Association of Nurse Anesthetists	(708) 692-7050

KENTUCKY:

LEXINGTON	Bluegrass A.O.R.N.	(606) 278-3436 x 1133
	Society of Head & Neck Nurses, Lexington Chapter	(606) 257-5405
LOUISVILLE	AWHONN Kentucky Section	(502) 589-1240
	American Association of Critical Care Nurses	(502) 228-1810
	Kentuckiana Association of Operating Room Nurses	
	Kentucky Association of Nurse Anesthetists	(502) 456-5741
	Kentucky Nurses' Association *	(502) 637-2546
	Louisville Area Association of Occupational Health Nurses	(502) 452-4196 or 0333
	National Association of Orthopaedic Nurses, River Cities Chapter	(502) 562-3385
SCOTTSVILLE	Kentucky State Association of Licensed Practical Nurses *	(502) 622-4206

CATEGORY 2: RELATED NURSING ORGANIZATIONS (2)

KENTUCKY:

LOUISVILLE	Kentuckiana Emergency Nurses Association, Inc.	(502) 634-1239
SOMERSET	Eastern Kentucky Neonatal Nurses Association	(606) 678-2000

CATEGORY 3: EDUCATIONAL INSTITUTIONS (29)

KENTUCKY:

ASHLAND	Ashland Community College	(606) 329-2999
BEREA	Berea College	(606) 986-9341
BOWLING GREEN	Western Kentucky University	(502) 745-3391
CUMBERLAND	Southeast Community College	(606) 589-2145
DANVILLE	Danville School of Practical Nursing	(606) 236-6030
ELIZABETHTOWN	Elizabethtown Community College	(502) 769-2371
FRANKFORT	Kentucky State University	(502) 227-5957
GLASGOW	Glasgow School for Health Occupations	(502) 651-5673
HAZARD	Hazard Community College	(502) 436-5721
HENDERSON	Henderson Community College	(502) 827-1867
HOPKINSVILLE	Hopkinsville Community College	(502) 886-3921
LEXINGTON	Central Kentucky State Vocational Technical School	(606) 255-8501
	Lexington Community College	(606) 257-8763
	University of Kentucky, College of Nursing	(606) 233-5237
LOUISVILLE	Bellarmine College	(502) 452-8215
	Jefferson Community College	(502) 584-0181
	Kentucky Health Care Training	(502) 459-2021
	Kentucky Tech - Jefferson State Campus	(502) 588-4275
	Spalding University	(502) 585-9911 x 245
	University of Louisville, School of Nursing	(502) 588-8381
MAYSVILLE	Maysville Community College	(606) 759-7141
MOREHEAD	Morehead State University	(606) 783-2635
MURRAY	Murray State University	(502) 762-2193
PADUCAH	Paducah Community College	(502) 442-6131
PAINTSVILLE	Mayo State Vocational-Technical School	(606) 789-5321
RICHMOND	Eastern Kentucky University	(606) 622-2143
SOMERSET	Somerset School of Practical Nursing	(606) 679-4303 or 4304

TENNESSEE:

CLARKSVILLE	Austin Peay State University, Department of Nursing	(606) 329-2999
NASHVILLE	University of Tennessee	(615) 251-1214

CATEGORY 4: HEALTH SERVICE AGENCIES (105)

INDIANA:

NEW ALBANY Floyd Memorial Hospital (812) 944-7701

KENTUCKY:

ASHLAND King's Daughters' Medical Center (606) 327-4000
 Our Lady of Bellefonte Hospital (606) 833-3333
 BENTON Marshall County Hospital (502) 527-1336
 BERA Berea Hospital, Inc. (606) 986-3151
 BOWLING GREEN HCA Greenview Hospital (502) 781-4330
 Medical Center at Bowling Green (502) 745-1000
 Mediplex Rehab-Bowling Green (502) 782-6900
 BURKESVILLE Cumberland County Hospital (502) 864-2511
 CAMPBELLSVILLE Taylor County Hospital (502) 465-3561
 COLUMBIA Westlake Cumberland Hospital (502) 384-4753
 CORBIN Baptist Regional Medical Center (606) 528-1212
 COVINGTON St. Charles Care Center (606) 331-3224
 CYNTHIANA Harrison Memorial Hospital (606) 234-2300
 Wedco District Health Department (606) 234-8750
 DANVILLE Ephraim McDowell Regional Medical Center (606) 236-4121
 EDGEWOOD St. Elizabeth Medical Center (606) 344-2335
 ELIZABETHTOWN Hardin County Memorial Hospital (502) 737-1212
 Lakeview Rehabilitation Hospital (502) 769-3100
 FLEMINGSBURG Fleming County Hospital (606) 849-2351
 FLORENCE St. Luke Hospital West (606) 525-4204
 FORT THOMAS St. Luke Hospital East (606) 572-3205
 FRANKFORT Kings Daughters' Hospital (502) 875-5240
 GEORGETOWN Scott General Hospital (502) 863-2141
 GLASGOW T.J. Samson Community Hospital (502) 651-4444
 HARLAN Harlan Appalachian Regional Hospital (606) 573-8100 x 660
 HARTFORD Ohio County Hospital (502) 298-7411
 HAZARD Southeast Kentucky Area Health Education Center (606) 439-3557 x 31
 HENDERSON Community Methodist Hospital (502) 827-7700
 HOPKINSVILLE Jennie Stuart Medical Center (502) 887-0100
 Western State Hospital (502) 886-4431
 JENKINS Jenkins Community Hospital (606) 832-2171
 LAGRANGE Tri-County Community Hospital (502) 222-5388
 LEBANON Spring View Hospital (502) 692-3161
 LEITCHFIELD Twin Lakes Regional Medical Center (502) 259-9400
 LEXINGTON Appalachian Regional Healthcare, Inc. (606) 281-2440
 Cardinal Hill Hospital (606) 254-5701 x 270
 Central Baptist Hospital (606) 275-6100
 Charter Ridge Hospital (606) 269-2325
 810th Convalescent Hospital (606) 233-4511 x 4619
 Eastern State Hospital (606) 255-1431
 Good Samaritan Hospital (606) 252-6612 x 8656
 Lexington Clinic (606) 255-6841
 Lexington-Fayette County Health Department (606) 252-2371
 Lexington Hospital (606) 268-4800
 St. Joseph Hospital (606) 278-3436
 Shriners Hospital for Crippled Children (606) 266-2101
 University of Kentucky, University Hospital (606) 233-5545
 Veterans Administration Medical Center (606) 233-4511 x 4482
 LONDON Cumberland Valley District Health Department (606) 878-0610 x 202
 Marymount Hospital (606) 878-6520
 LOUISA Three Rivers Medical Center (606) 638-9451
 LOUISVILLE Audubon Regional Medical Center (502) 636-7185
 Baptist Hospital East (502) 897-8100
 Central State Hospital (502) 245-4121
 Christian Church Campus of Louisville (502) 583-6533 x 228
 Frazier Rehab Center (502) 582-7400
 Hazelwood ICF/MR (502) 361-2301
 Hospice of Louisville (502) 456-6200
 Humana, Inc. (502) 580-3542
 Jefferson Place/Manor Nursing Home (502) 426-5600
 Jewish Hospital (502) 587-4375
 Kentucky Commission for Handicapped Children (502) 588-4459

CATEGORY 4: HEALTH SERVICE AGENCIES (Continued)

LOUISVILLE	Kosair Childrens Hospital	(502) 562-7310
	Nazareth Home	(502) 459-9681
	Norton Hospital	(502) 562-7425
	Our Lady of Peace Hospital	(502) 451-3330 x 149
	St. Anthony Medical Center	(502) 627-1000
	SS. Mary and Elizabeth Hospital	(502) 361-6771
	SpectraCare, Inc.	(502) 429-5500
	Southwest Hospital	(502) 933-8100
	Suburban Medical Center	(502) 893-1188
	University of Louisville Hospital	(502) 562-3963
	Veterans Administration Medical Center	(502) 895-3401 x 616
MADISONVILLE	Regional Medical Center	(502) 825-5100
MANCHESTER	Memorial Hospital	(606) 598-5104
MARTIN	Our Lady of the Way Hospital	(606) 285-5181
MAYFIELD	Community Hospital	(502) 247-5211
MAYSVILLE	Meadowview Regional Hospital	(606) 759-5311
MOREHEAD	St. Claire Medical Center	(606) 784-6661 x 3353
MT. STERLING	Mary Chiles Hospital	(606) 498-1220
MT. VERNON	Rockcastle County Hospital	(606) 256-219
MURRAY	Murray-Calloway County Hospital	(502) 762-1249
OWENSBORO	Mercy Hospital	(502) 686-6393
	Owensboro-Daviess County Hospital	(502) 926-3030 x 219
PADUCAH	Lourdes Hospital, Nursing Division, CE Unit	(502) 444-2444
	Western Baptist Hospital	(502) 575-2723
PIKEVILLE	Methodist Hospital of Kentucky	(606) 437-3525
PRESTONSBURG	Highlands Regional Medical Center	(606) 886-8511
RADCLIFF	Lincoln Trail Hospital	(502) 351-9444
RICHMOND	Pattie A. Clay Hospital	(606) 623-3131
RUSSELL SPRINGS	Russell County Hospital	(502) 866-4141
RUSSELLVILLE	Logan Memorial Hospital	(502) 726-4011
SHELBYVILLE	Jewish Hospital	(502) 633-2345
SOMERSET	Lake Cumberland District Health Department	(606) 679-4416
	Lake Cumberland Home Health Agency	(606) 679-7439
	Lake Cumberland Regional Hospital	(606) 679-7441
	Lifeline Home Health Care	(606) 679-4100
	Oakwood	(606) 679-4361 x 292
STANFORD	Fort Logan Hospital	(606) 365-2187
WILLIAMSTOWN	Grant County Hospital	(606) 823-5051
WINCHESTER	Clark Regional Medical Center	(606) 744-3261

TENNESSEE:

MURFREESBORO	National HealthCorp LP	(615) 890-2020
NEW TAZEWELL	Comprehensive Home Healthcare Services	(615) 626-8661

CATEGORY 5: HEALTH RELATED ORGANIZATIONS (9)**KENTUCKY:**

ERLANGER	American Cancer Society, Northern Kentucky Division	(606) 572-5100
HARTFORD	APIC, West Kentucky	(502) 298-7411
LEXINGTON	Dialysis Clinic, Inc.	(606) 252-7712
	Kentucky Home Health Association	(606) 268-2574
LOUISVILLE	American Heart Association, KY Affiliate	(502) 587-8641
	American Red Cross, Louisville Area Chapter	(502) 589-4450 x 413
	Kentucky Association of Health Care Facilities	(502) 425-5000
	Kentucky Association of Homes for the Aging	(502) 635-6468
	National Health Laboratories, Inc.	(502) 456-4700

CATEGORY 6: COMMERCIAL ORGANIZATIONS (5)**KENTUCKY:**

CRESCENT SPRINGS	Pharmacare IV Services	(606) 331-1112
LOUISVILLE	Advanced Nursing Services of Kentucky	(502) 933-1279

CATEGORY 6: COMMERCIAL ORGANIZATIONS (Continued)

LOUISVILLE	Blue Cross and Blue Shield of Kentucky/Medical Management	(502) 423-5985
	D & R Pharmacare	(502) 454-0803
	Phillip Morris Medical Department	(502) 566-1205
PRINCETON	The Pharmacy Corner	(502) 365-2078

CATEGORY 7: OTHER (II)

CALIFORNIA:

ROSEVILLE	National Center of Continuing Education	(916) 786-4626
SAN DIEGO	Western Schools	(619) 469-2121

KENTUCKY:

BRONSTON	Health Information Dispersment Systems	(606) 561-5514
FRANKFORT	Division of Maternal & Child Health, CHR, DHS	(502) 564-3236
GLASGOW	Nursing CE Associates	(800) 645-0742
LEBANON JUNCTION	Critical Care Connections	(502) 833-4404
LOUISVILLE	Carlin Institute of Weight Control and Health, Inc.	(502) 451-7519
	Health Care Consultants, PSC	(502) 568-4043
	Health Care Promotions	(502) 366-4388

MISSOURI:

ST. LOUIS	Mosby/Resource Applications	(301) 796-9010
-----------------	-----------------------------------	----------------

WISCONSIN:

OCONOMOWOC	Caring Unlimited	(800) 992-2731
------------------	------------------------	----------------

NATIONAL NURSING ORGANIZATIONS RECOGNIZED BY THE KENTUCKY BOARD OF NURSING FOR APPROVAL OF CONTINUING EDUCATION OFFERINGS

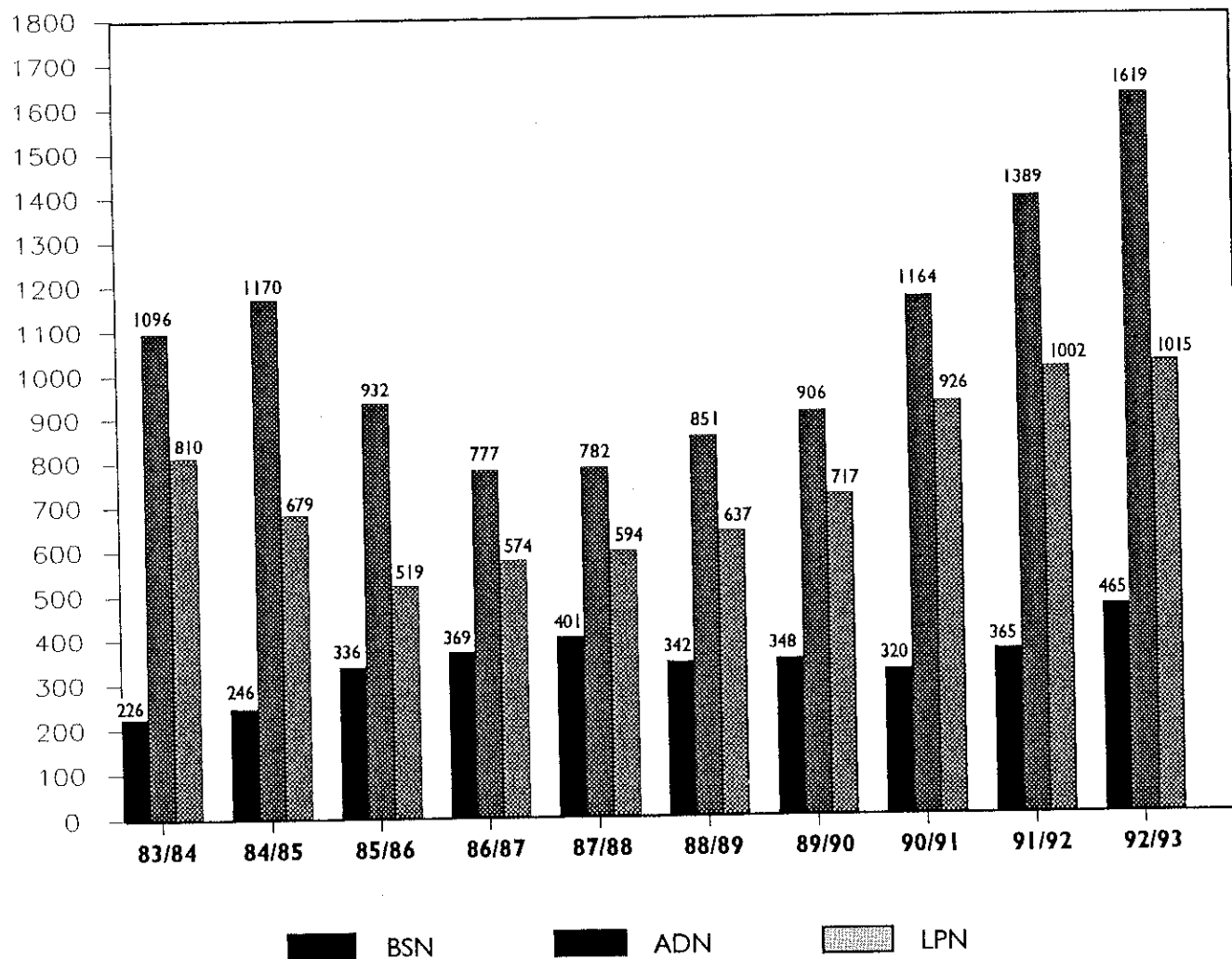
AMERICAN NURSES' ASSOCIATION (ANA) - Includes national nursing organizations accredited by ANA
AMERICAN ASSOCIATION OF CRITICAL CARE NURSES (AACN)
AMERICAN ASSOCIATION OF NURSE ANESTHETISTS (AANA)
AMERICAN COLLEGE OF NURSE-MIDWIVES (ACNM)
ASSOCIATION OF WOMEN'S HEALTH, OBSTETRICAL AND NEONATAL NURSES (AWHONN)
NATIONAL ASSOCIATION OF PEDIATRIC NURSE ASSOCIATES AND PRACTITIONERS (NAPNAP)
NATIONAL FEDERATION OF LICENSED PRACTICAL NURSES (NFLPN)
NATIONAL LEAGUE FOR NURSING (NLN)
OTHER STATE BOARDS OF NURSING

* NOTE: Offerings presented by KSALPN or KNA districts may be approved. For information regarding programming in the district in your area, contact the office of Continuing Education of the KSALPN or KNA, or the District.

TABLE 4
1992-93 PRELICENSURE PROGRAMS OF NURSING APPROVAL STATUS
AND NUMBER OF GRADUATES BY PROGRAM TYPE

PROGRAM TYPE	PROGRAM NAME	APPROVAL STATUS	NUMBER GRADUATES
REGISTERED NURSE BACCALAUREATE DEGREE PROGRAMS	Bellarmine College	Full	12
	Berea College	Full	17
	Eastern Kentucky University	Full	56
	Morehead State University	Full	30
	Murray State University	Full	50
	Spalding University	Full	46
	Thomas More College - Providence Hospital Extension Program	Full	15
	University of Kentucky	Full	109
	University of Louisville	Full	93
	Western Kentucky University	Full	37
TOTAL BACCALAUREATE DEGREE PROGRAM GRADUATES			465
REGISTERED NURSE ASSOCIATE DEGREE PROGRAMS	Ashland Community College	Full	76
	Eastern Kentucky University	Full	114
	Elizabethtown Community College	Full	83
	Hazard Community College	Full	61
	Henderson Community College - Owensboro Extension Program	Full	134
	Hopkinsville Community College	Full	56
	Jefferson Community College	Full	167
	Kentucky State University	Full	48
	Kentucky Wesleyan College	Full	37
	Lees College	Full	27
	Lexington Community College	Full	89
	Lincoln Memorial University Corbin Extension Program	Full	28
	Madisonville Community College	Full	103
	Maysville Community College	Full	25
	Midway College - Danville Extension Program	Full	108
	Morehead State University	Full	35
	Northern Kentucky University	Full	83
	Paducah Community College	Full	80
	Pikeville College	Full	18
	Prestonsburg Community College	Full	26
	Somerset Community College	Full	44
	Southeast Community College	Full	49
	Western Kentucky University - Glasgow Extension Program	Full	128
TOTAL ASSOCIATE DEGREE PROGRAM GRADUATES			1619
TOTAL REGISTERED NURSE PROGRAM GRADUATES			2084
PRACTICAL NURSE PROGRAMS	Ashland Area Voc-Tech School	Full	26
	Central Kentucky State Voc-Tech School	Full	55
	Cumberland Valley Health Occupations Ctr - Mt. Vernon Extension Program	Full	34
	Danville School of Health Occupations	Full	93
	Glasgow School for Health Occupations - Elizabethtown Extension Program	Full	92
	Hazard State Voc-Tech School - Letcher County Extension Program	Full	42
	Humana Health Institutes, Inc.	Full	96
	Jefferson State Voc-Tech School	Full	64
	Madisonville Health Occupations School	Full	26
	Mayo State Voc-Tech School - Pikeville Extension Program	Full	33
	Murray Area Vocational Education Center	Full	22
	Northern Kentucky Health Occupations Ctr - Carrollton Extension Program	Full	54
	Owensboro State Voc-Tech School	Full	32
	Rowan State Voc-Tech School - Maysville & Mt. Sterling Extension Programs	Full	67
	St. Luke School of Practical Nursing	Full	52
	Somerset State Voc-Tech School	Full	79
	Spencerian College	Conditional	126
	West Kentucky State Voc-Tech School	Full	22
TOTAL PRACTICAL NURSE PROGRAM GRADUATES			1015
TOTAL NUMBER OF GRADUATES			3099

TABLE 2A
KENTUCKY PRELICENSURE PROGRAM OF NURSING GRADUATES
FY 84 - FY 93



SOURCE: 1984-93 ANNUAL REPORTS FROM KENTUCKY PRELICENSURE PROGRAMS OF NURSING

**TABLE 2B
COMPARATIVE DATA
KENTUCKY PRELICENSURE PROGRAM OF NURSING GRADUATES
FY 89 - FY 93**

PROGRAM TYPE	FY 88/89			FY 89/90			FY 90/91			FY 91/92			FY 92/93		
	N	CHANGE	%	N	CHANGE	%	N	CHANGE	%	N	CHANGE	%	N	CHANGE	%
BSN Programs:	342	(-59)	15%	348	(+6)	2%	320	(-28)	8%	365	(+45)	14%	465	(+100)	27%
ADN Programs:	851	(+69)	9%	906	(+55)	6%	1164	(+258)	28%	1389	(+225)	19%	1619	(+230)	17%
Total RN Programs:	1193	(+10)	1%	1254	(+61)	5%	1484	(+230)	18%	1754	(+270)	18%	2084	(+330)	19%
LPN Programs:	637	(+43)	7%	717	(+80)	7%	926	(+209)	24%	1002	(+76)	8%	1015	(+13)	1%
Total Graduates:	1830	(+53)	3%	1971	(+141)	3%	2410	(+439)	22%	2756	(+346)	14%	3099	(+343)	13%

All Percentages Rounded

SOURCE: 1989-93 ANNUAL REPORTS FROM KENTUCKY PRELICENSURE PROGRAMS OF NURSING

TABLE 3
NCLEX* PASS RATES OF FIRST-TIME EXAMINATION WRITERS BY PROGRAM
FY 93

PROGRAM TYPE	PROGRAM NAME	NCLEX-RN FORM 792			NCLEX-RN FORM 293			TOTAL FY 92		
		# CANDIDATES	# PASSED	% PASSED	# CANDIDATES	# PASSED	% PASSED	# CANDIDATES	# PASSED	% PASSED
REGISTERED NURSE BACCALAUREATE DEGREE PROGRAMS	Bellarmino College	14	14	100	3	3	100	17	17	100
	Berea College	11	9	82	--	--	--	11	9	82
	Eastern Kentucky University	19	18	95	22	22	100	41	40	98
	Morehead State University	20	17	85	--	--	--	20	17	85
	Murray State University	17	15	88	19	19	100	36	34	94
	Spalding University	33	33	100	4	3	75	37	36	97
	Thomas More College	7	7	100	--	--	--	7	7	100
	University of Kentucky	71	70	99	18	17	94	89	87	98
	University of Louisville	58	57	98	25	24	96	83	81	98
	Western Kentucky University	34	33	97	--	--	--	34	33	97
TOTAL BSN PROGRAMS		284	273	96	91	88	97	375	361	96
REGISTERED NURSE ASSOCIATE DEGREE PROGRAMS	Ashland Community College	68	59	87	--	--	--	68	59	87
	Eastern Kentucky University	55	52	95	51	49	96	106	101	95
	Elizabethtown Community College	36	36	100	36	34	94	72	70	97
	Hazard Community College	57	47	83	--	--	--	57	47	83
	Henderson Community College	51	48	94	50	47	94	101	93	94
	Hopkinsville Community College	37	35	95	--	--	--	37	35	95
	Jefferson Community College	93	89	96	89	88	99	182	177	97
	Kentucky State University	47	41	87	--	--	--	47	41	87
	Kentucky Wesleyan College	38	36	95	1	1	100	39	37	95
	Lees College	27	23	85	--	--	--	27	23	85
	Lexington Community College	77	75	97	--	--	--	77	75	97
	Madisonville Community College	48	46	96	42	38	91	90	84	93
	Maysville Community College	31	30	97	1	1	100	32	31	97
	Midway College	70	62	89	--	--	--	70	62	89
	Morehead State University	27	25	93	--	--	--	27	25	93
	Northern Kentucky University	105	104	99	--	--	--	105	104	99
	Paducah Community College	61	59	97	1	1	100	62	60	97
	Pikeville College	17	15	88	--	--	--	17	15	88
	Prestonsburg Community College	16	15	94	12	12	100	38	37	95
	Somerset Community College	35	35	100	--	--	--	35	35	100
	Southeast Community College	41	38	93	--	--	--	41	38	93
	Western Kentucky University	41	39	95	47	45	96	88	84	95
TOTAL ADN PROGRAMS		1078	1009	94	330	316	96	1408	1325	94
TOTAL REGISTERED NURSE PROGRAMS		1362	1282	94	421	404	96	1783	1686	95

TABLE 3 (Continued)
NCLEX PASS RATES OF FIRST-TIME EXAMINATION WRITERS BY PROGRAM
FY 93

PROGRAM TYPE	PROGRAM NAME	NCLEX-PN FORM 092			NCLEX-PN FORM 493			TOTAL FY 92		
		# CANDIDATES	# PASSED	% PASSED	# CANDIDATES	# PASSED	% PASSED	# CANDIDATES	# PASSED	% PASSED
PRACTICAL NURSE PROGRAMS	Ashland State Voc Tech	45	42	93	5	4	80	49	46	94
	Central Kentucky State Voc Tech	25	23	92	30	29	97	55	52	95
	Cumberland Valley Health Occupations	40	39	98	--	--	--	40	39	98
	Danville School of Health Occupations	48	48	100	28	27	96	76	75	99
	Glasgow School for Health Occupations & Elizabethtown Extension	64	61	95	1	1	100	65	62	95
	Hazard State Voc Tech	39	37	95	23	23	100	62	60	97
	& Letcher County Extension									
	Humana Health Institutes, Inc.	65	62	95	37	36	97	102	98	96
	Jefferson State Voc Tech	26	23	89	33	32	97	59	55	93
	Madisonville Health Occupations	33	28	85	26	26	100	59	54	92
	Mayo State Voc Tech	37	37	100	--	--	--	37	37	100
	& Pikeville Extension									
	Murray Area Voc Ed Center	30	28	93	--	--	--	30	28	93
	Northern Ky Health Occupations	26	25	96	30	27	90	56	52	93
	Owensboro State Voc Tech	33	33	100	--	--	--	33	33	100
	Rowan State Voc Tech	33	28	85	--	--	--	33	28	85
	& Maysville Extension									
	St. Luke Hospital **	28	28	100	25	24	96	53	52	98
	Somerset State Voc Tech	--	--	--	23	17	74	23	17	74
	Spencerian College	69	62	90	58	55	95	127	117	92
	West Ky State Voc Tech	24	23	96	1	0	0	25	23	92
TOTAL PRACTICAL NURSE PROGRAMS		665	627	94	320	301	94	985	928	94
TOTAL KENTUCKY PROGRAMS		2027	1909	94	741	705	95	2768	2614	94

First-Time Writers, Graduates of Kentucky Programs. Percent (5) rounded to the nearest whole number.

* National Council Licensure Examination

** Formerly William Booth School of Practical Nurse Education

TABLE 4
COMPARATIVE NCLEX PASS RATES OF FIRST-TIME EXAMINATION WRITERS:
KENTUCKY AND ALL U.S. JURISDICTIONS
FY 93

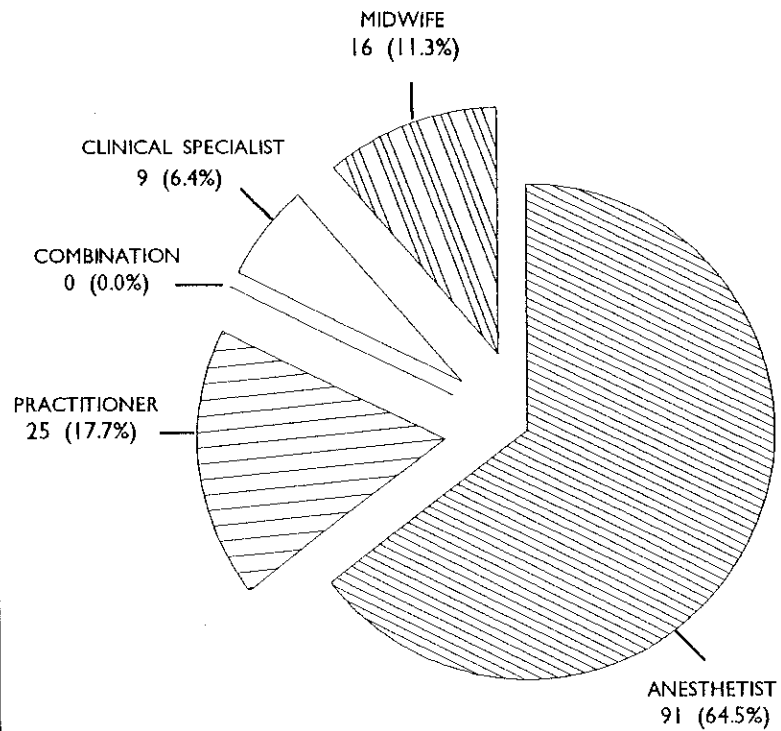
EXAMINATION CANDIDATES	REGISTERED NURSE FIRST TIME WRITERS		PRACTICAL NURSE FIRST TIME WRITERS	
	NCLEX-RN FORM 792	NCLEX-RN FORM 293	NCLEX-PN FORM 092	NCLEX-PN FORM 493
TOTAL CANDIDATES: ALL U.S. JURISDICTIONS	63,623	19,915	32,351	18,203
TOTAL KENTUCKY EDUCATED CANDIDATES	1,362	421	665	320
TOTAL CANDIDATES WRITING IN KENTUCKY	1,406	441	633	286
PERCENT PASSING: ALL U.S. JURISDICTIONS	92.7	91.2	90.5	90.7
PERCENT PASSING: ALL KENTUCKY EDUCATED CANDIDATES	94.1	96.0	94.3	94.1

TABLE 5
KENTUCKY BOARD OF NURSING
DISCIPLINARY ACTIONS
FY 93

<u>TYPE OF ACTION</u>	<u>LICENSE TYPE</u>	
	<u>RN</u>	<u>LPN</u>
Licenses Revoked	6	3
Licenses Suspended	14	31
Immediate Temporary Suspension of License	0	1
Licenses Suspended Followed by Probation	2	3
Licenses Suspended Followed by Limitation/Probation	6	6
Licenses Probated	19	16
Licenses Limited	6	3
Licenses Limited/Probated	6	4
Licenses Continued on Probation	1	2
Voluntary Surrender of License	6	6
Requests for Reinstatement of a Revoked/Suspended License - Granted on a Probationary or Limited Basis	5	1
Admitted to NCLEX/Licenses Probated	0	1
Admission to NCLEX Denied	0	1
License Reinstatement Denied	10	3
Public Reprimand	10	7
Licensure Granted	2	1
Consent Decree/Civil Penalty	112	57
No Action Taken	1	1
 <u>COMPLAINT ACTIVITY</u>		
Complaints for Applicants with Conviction Records Handled on an Informal Basis	203	
Complaints/No Formal Action Deemed Necessary or Possible	42	
Applications Filed Away in Cases where Individuals could not be Located, were Deceased, or Criminal Charges were Dismissed	57	
 NUMBER OF COMPLAINTS RECEIVED = 725		
ACTIVE CASES AS OF JUNE 30, 1993 = 296		

TABLE 6
ADVANCED REGISTERED NURSE PRACTITIONER (ARNP) REGISTRATIONS
FY 93 AND CUMULATIVE

FY 93 REGISTRATIONS TOTAL = 141



CUMULATIVE REGISTRATIONS TOTAL = 1,036

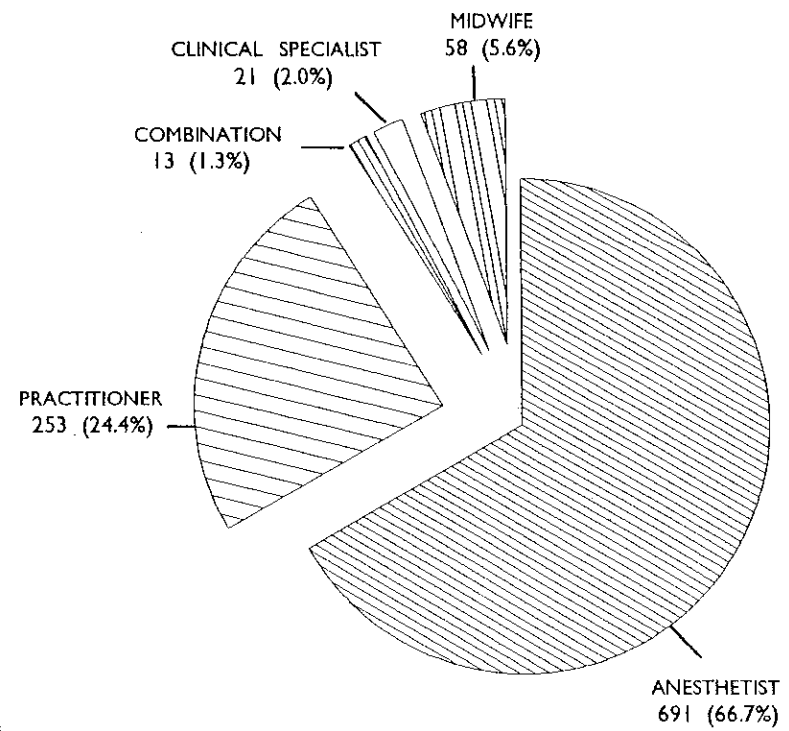


TABLE 7
LICENSURE TOTALS BY LICENSURE TYPE AND STATUS
1992-93

LICENSURE TYPE	REGISTERED NURSE		LICENSED PRACTICAL NURSE	
	ACTIVE	INACTIVE	ACTIVE	INACTIVE
TOTAL CURRENT LICENSEES AS OF JUNE 1993 *	32,524	3,844	12,871	1,345
TOTAL OUT-OF-COUNTRY	35	19	2	1
TOTAL OUT-OF-STATE	4,832	2,239	1,388	431
TOTAL RESIDING IN KENTUCKY	27,657	1,586	11,481	913
LICENSES ISSUED BY REINSTATEMENT	400	45	106	8
LICENSES ISSUED BY ACTIVATION	80	0	46	0

* Numbers include renewal of licenses and original Kentucky licenses issued by endorsement and examination from July 1, 1992 to June 30, 1993. Also included are registered nurse and licensed practical nurse licenses issued by reinstatement and activation.

TABLE 8
KENTUCKY REGISTERED NURSES
BY HIGHEST EDUCATIONAL LEVEL
FY 93

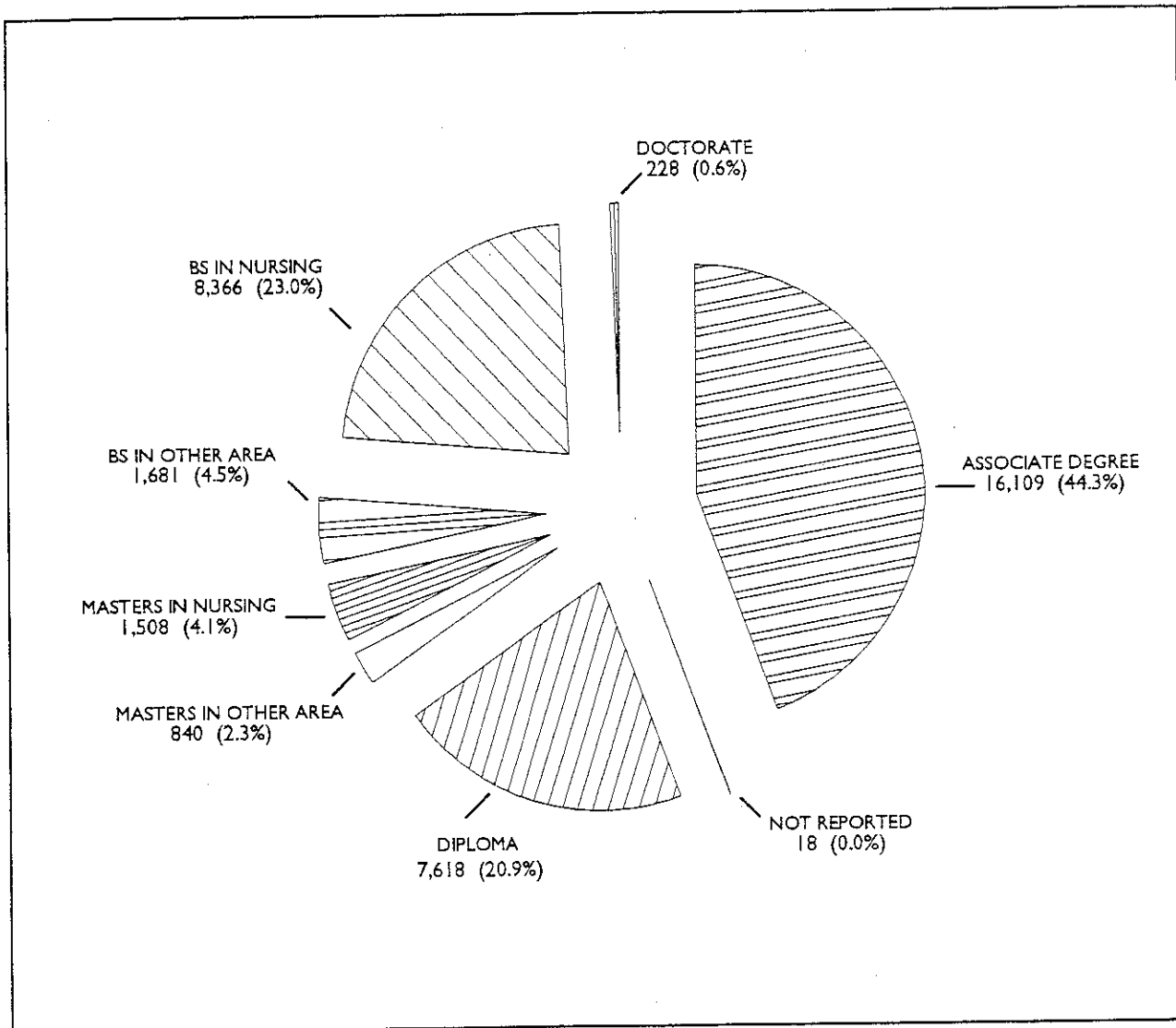


TABLE 9
KENTUCKY REGISTERED NURSE LICENSEES
BY COUNTY OF RESIDENCE AND EDUCATIONAL DATA
FY 93

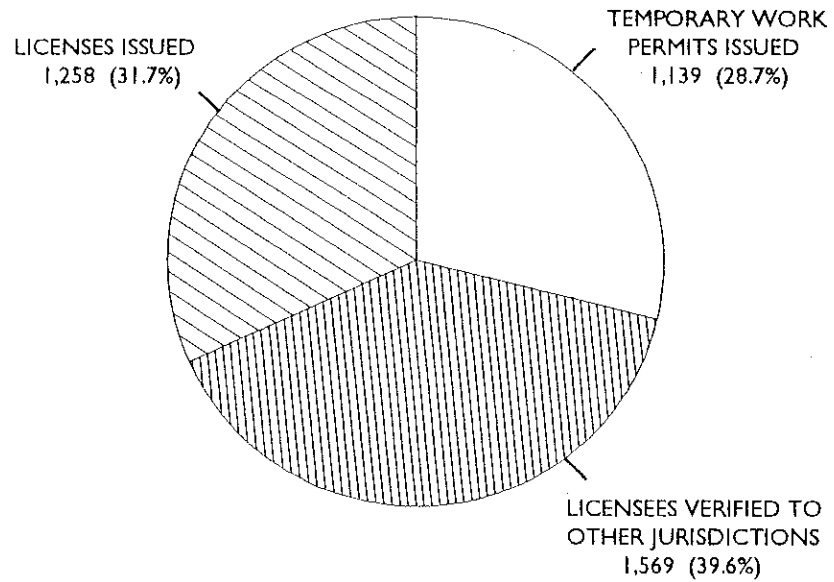
COUNTY	PRELICENSURE EDUCATIONAL PREPARATION			HIGHEST EDUCATION LEVEL ATTAINED						
	DIPLOMA	ASSOC DEGREE	BACC DEGREE	DIPLOMA	ASSOC DEGREE	BACC NURSING	BACC OTHER	MASTERS NURSING	MASTER OTHER	DOCT
ADAIR	17	54	10	5	45	12	5	3	1	0
ALLEN	8	48	9	7	36	12	2	6	2	0
ANDERSON	15	80	10	13	68	17	3	3	1	0
BALLARD	4	40	6	3	39	6	0	2	0	0
BARREN	44	151	12	40	124	30	8	3	2	0
BATH	5	37	1	4	22	4	1	0	2	0
BELL	50	128	8	41	124	8	6	5	2	0
BOONE	142	270	94	115	220	116	22	19	12	2
BOURBON	21	88	26	17	76	29	4	6	3	0
BOYD	171	332	49	141	291	82	15	14	8	1
BOYLE	53	98	36	43	93	36	6	8	1	0
BRACKEN	8	44	4	5	41	6	2	1	0	0
BREATHITT	14	44	9	12	40	10	2	1	2	0
BRECKINRIDGE	20	44	11	20	41	14	0	0	0	0
BULLITT	64	169	71	55	154	79	8	5	3	0
BUTLER	6	40	4	4	36	8	1	1	0	0
CALDWELL	7	59	12	4	52	14	4	2	2	0
CALLOWAY	40	54	102	22	44	89	11	20	5	5
CAMPBELL	197	365	84	165	300	118	28	23	6	6
CARLISLE	2	25	10	0	23	11	3	0	0	0
CARROLL	16	21	6	15	18	7	1	0	2	0
CARTER	19	113	10	18	102	11	7	2	2	0
CASEY	4	39	5	4	34	10	0	0	0	0
CHRISTIAN	70	232	46	59	208	53	11	15	1	1
CLARK	45	141	47	38	116	54	7	13	3	2
CLAY	17	45	16	13	37	21	3	1	3	0
CLINTON	2	35	6	1	30	8	2	0	1	0
CRITTENDEN	6	42	9	6	38	9	3	1	0	0
CUMBERLAND	5	19	4	5	19	3	0	1	0	0
DAVIESS	212	557	80	187	488	112	32	17	11	1
EDMONSON	3	24	1	4	21	2	1	0	0	0
ELLIOTT	3	13	3	2	11	4	1	1	0	0
ESTILL	3	38	11	3	35	9	4	1	0	0
FAYETTE	820	1604	962	645	1176	1069	162	231	69	34
FLEMING	12	68	9	10	64	10	1	2	2	0
FLOYD	33	220	18	27	194	27	15	4	3	0
FRANKLIN	92	169	42	69	141	48	21	15	6	3
FULTON	5	20	6	4	17	8	0	1	1	0
GALLATIN	5	10	0	3	10	0	1	0	1	0
GARRARD	17	54	10	13	47	11	6	4	0	0
GRANT	16	40	6	15	34	10	2	1	0	0
GRAVES	28	139	48	23	132	51	3	4	2	0
GRAYSON	34	113	8	32	102	9	4	3	4	0
GREEN	13	34	0	8	31	6	1	0	1	0
GREENUP	72	182	22	62	166	30	11	5	1	1
HANCOCK	8	34	2	7	28	6	2	1	0	0
HARDIN	113	441	101	94	381	129	17	16	16	1
HARLAN	97	107	14	85	101	14	8	6	4	0
HARRISON	32	68	15	28	64	19	2	2	0	0
HART	12	54	6	9	44	11	4	2	2	0
HENDERSON	68	275	40	57	239	50	13	16	7	1
HENRY	18	42	9	16	38	11	2	2	0	0
HICKMAN	3	13	7	3	11	6	2	1	0	0
HOPKINS	60	271	48	36	229	71	21	15	7	0
JACKSON	3	27	5	4	24	5	1	0	1	0
JEFFERSON	2325	2834	1948	1826	2221	2211	312	282	207	44
JESSAMINE	59	180	88	46	148	86	19	16	7	3
JOHNSON	13	97	10	10	85	15	5	3	2	0
KENTON	421	617	169	357	471	232	79	40	22	6
KNOTT	7	75	7	6	74	5	1	1	2	0

TABLE 9: KY REGISTERED NURSE LICENSEES BY COUNTY OF RESIDENCE AND EDUCATIONAL DATA, FY 93 (Continued)

COUNTY	PRELICENSURE EDUCATIONAL PREPARATION			HIGHEST EDUCATION LEVEL ATTAINED						
	DIPLOMA	ASSOC DEGREE	BACC DEGREE	DIPLOMA	ASSOC DEGREE	BACC NURSING	BACC OTHER	MASTERS NURSING	MASTER OTHER	DOCT
KNOX	18	79	14	14	72	12	9	1	2	1
LARUE	15	58	7	14	53	9	2	1	1	0
LAUREL	31	135	34	28	122	35	8	4	3	0
LAWRENCE	16	50	2	15	45	5	3	0	0	0
LEE	3	13	3	3	13	3	0	0	0	0
LESLIE	15	40	12	8	36	10	6	3	3	0
LETCHER	26	115	8	22	110	9	5	2	1	0
LEWIS	4	29	6	3	26	7	1	2	0	0
LINCOLN	15	66	10	14	60	12	5	0	0	0
LIVINGSTON	12	51	12	10	46	13	3	3	0	0
LOGAN	24	75	13	18	68	15	7	1	3	0
LYON	4	29	10	3	25	13	2	0	0	0
McCRACKEN	120	542	124	101	488	134	31	20	12	0
McCREARY	4	40	6	3	39	5	1	0	2	0
McLEAN	12	77	7	11	69	12	2	0	2	0
MADISON	80	266	165	58	198	165	29	33	20	8
MAGOFFIN	0	36	2	0	34	4	0	0	0	0
MARION	14	41	20	10	38	18	5	2	1	1
MARSHALL	35	120	40	30	116	37	5	5	0	2
MARTIN	5	37	2	5	37	2	0	0	0	0
MASON	45	82	14	37	75	13	7	5	4	0
MEADE	26	49	10	25	48	9	1	1	1	0
MENIFEE	4	5	2	4	5	2	0	0	0	0
MERCER	34	67	16	32	58	21	1	4	1	0
METCALFE	8	26	1	5	22	3	4	0	1	0
MONROE	6	20	2	5	15	4	2	0	2	0
MONTGOMERY	18	70	18	16	64	19	2	3	1	1
MORGAN	6	37	5	3	34	7	4	0	0	0
MUHLBERG	18	149	11	16	131	22	3	4	1	0
NELSON	56	117	39	48	101	48	5	6	4	0
NICHOLAS	13	20	3	12	18	3	1	2	0	0
OHIO	25	111	5	19	105	12	3	1	1	0
OLDHAM	164	197	123	133	162	136	23	20	9	1
OWEN	13	30	3	12	27	4	2	1	0	0
OWSLEY	1	6	3	1	6	2	0	0	1	0
PENDLETON	11	33	6	11	30	7	1	0	0	1
PERRY	40	111	18	32	102	22	5	4	0	1
PIKE	39	216	15	32	210	16	5	5	3	0
POWELL	4	20	3	3	17	5	1	1	2	0
PULASKI	56	222	44	44	208	43	7	12	0	0
ROBERTSON	0	13	1	0	11	3	0	0	8	0
ROCKCASTLE	9	46	6	8	42	9	1	0	0	0
ROWAN	27	103	27	16	82	26	10	15	1	2
RUSSELL	8	53	5	8	45	9	2	2	6	0
SCOTT	36	119	27	28	100	35	5	8	0	1
SHELBY	53	103	38	46	85	42	13	3	5	1
SIMPSON	12	41	5	11	35	7	4	0	4	1
SPENCER	13	24	13	9	21	18	1	1	0	0
TAYLOR	18	70	13	16	61	16	4	1	0	0
TODD	6	19	2	7	15	3	0	2	3	0
TRIGG	13	52	9	9	46	9	3	3	0	0
TRIMBLE	8	8	3	7	6	4	0	2	4	0
UNION	15	71	11	14	67	10	2	0	0	0
WARREN	139	537	65	111	402	124	53	28	4	4
WASHINGTON	9	18	5	8	16	7	0	0	19	0
WAYNE	9	53	7	8	49	10	1	1	1	0
WEBSTER	6	75	5	4	70	11	1	0	0	0
WHITLEY	36	146	28	32	135	23	7	0	0	1
WOLFE	4	17	3	2	16	5	1	0	3	0
WOODFORD	64	142	42	51	112	55	14	8	4	4
OUT-OF-STATE	2417	2889	1764	1762	2247	1855	432	430	255	85
OUT-OF-COUNTRY	32	7	15	25	4	13	8	2	0	2
UNKNOWN	0	1	0	0	1	0	0	0	0	0
GRAND TOTAL	9653	19371	7344	7618	16109	8366	1681	1508	840	228
TOTAL CURRENT REGISTERED NURSES = 36,368 (Includes 18 Unreported)										

TABLE 10
KENTUCKY BOARD OF NURSING
ENDORSEMENT/VERIFICATION ACTIVITY
FY 93

REGISTERED NURSES



LICENSED PRACTICAL NURSES

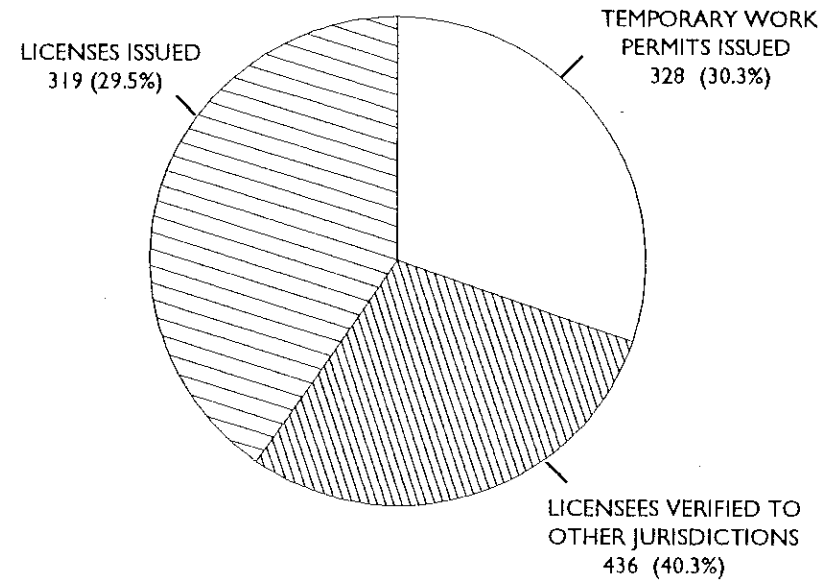


TABLE II
KENTUCKY NURSING LICENSES ISSUED BY ENDORSEMENT:
BY JURISDICTION OF ORIGINAL LICENSE
FY 93

JURISDICTION OF ORIGINAL LICENSE	LICENSE TYPE		JURISDICTION OF ORIGINAL LICENSE	LICENSE TYPE	
	RN	LPN		RN	LPN
ALABAMA	26	3	MONTANA	2	0
ALASKA	0	0	NEBRASKA	6	1
ARIZONA	3	2	NEVADA	0	0
ARKANSAS	9	6	NEW HAMPSHIRE	2	0
CALIFORNIA	42	2	NEW JERSEY	13	2
COLORADO	4	4	NEW MEXICO	0	1
CONNECTICUT	5	0	NEW YORK	54	4
DELAWARE	2	2	NORTH CAROLINA	31	6
DISTRICT OF COLUMBIA	5	0	NORTH DAKOTA	5	0
FLORIDA	55	5	OHIO	279	56
GEORGIA	25	4	OKLAHOMA	12	3
HAWAII	0	0	OREGON	7	0
IDAHO	2	0	PENNSYLVANIA	28	4
ILLINOIS	67	22	RHODE ISLAND	1	0
INDIANA	106	54	SOUTH CAROLINA	5	5
IOWA	18	0	SOUTH DAKOTA	2	1
KANSAS	10	2	TENNESSEE	97	47
KENTUCKY	0	0	TEXAS	35	8
LOUISIANA	10	4	UTAH	4	1
MAINE	6	0	VERMONT	4	1
MARYLAND	17	0	VIRGINIA	31	11
MASSACHUSETTS	15	1	WASHINGTON	3	3
MICHIGAN	43	10	WEST VIRGINIA	71	28
MINNESOTA	12	3	WISCONSIN	14	6
MISSISSIPPI	7	2	WYOMING	2	0
MISSOURI	26	5			
GUAM	0	0	OUT-OF-COUNTRY	35	0
TOTAL LICENSEES ISSUED BY ENDORSEMENT				1258	319

TABLE 12
KENTUCKY NURSE LICENSEES
BY TYPE OF LICENSE AND COUNTY OF RESIDENCE
FY 93

COUNTY	RN	LPN	COUNTY	RN	LPN	COUNTY	RN	LPN	COUNTY	RN	LPN
ADAIR	81	47	EDMONSON	28	20	KNOX	111	101	NICHOLAS	36	17
ALLEN	65	61	ELLIOTT	19	18	LARUE	80	27	OHIO	141	78
ANDERSON	105	27	ESTILL	52	24	LAUREL	200	92	OLDHAM	484	88
BALLARD	50	35	FAYETTE	3386	690	LAWRENCE	68	65	OWEN	46	21
BARREN	207	274	FLEMING	89	31	LEE	19	14	OWSLEY	10	5
BATH	43	38	FLOYD	271	245	LESLIE	67	40	PENDLETON	50	34
BELL	186	173	FRANKLIN	303	55	LETCHER	149	183	PERRY	169	192
BOONE	506	224	FULTON	31	17	LEWIS	39	28	PIKE	270	321
BOURBON	135	47	GALLATIN	15	20	LINCOLN	91	162	POWELL	27	26
BOYD	552	279	GARRARD	81	53	LIVINGSTON	75	31	PULASKI	322	219
BOYLE	187	216	GRANT	62	55	LOGAN	112	54	ROBERTSON	14	11
BRACKEN	56	35	GRAVES	215	152	LYON	43	22	ROCKCASTLE	61	50
BREATHITT	67	65	GRAYSON	155	35	McCRACKEN	786	281	ROWAN	157	61
BRECKINRIDGE	75	34	GREEN	47	39	McCREARY	50	59	RUSSELL	66	48
BULLITT	304	115	GREENUP	276	139	McLEAN	96	47	SCOTT	182	73
BUTLER	50	28	HANCOCK	44	28	MADISON	511	104	SHELBY	194	37
CALDWELL	78	45	HARDIN	655	283	MAGOFFIN	38	34	SIMPSON	58	23
CALLOWAY	196	167	HARLAN	218	113	MARION	75	70	SPENCER	50	11
CAMPBELL	646	239	HARRISON	115	49	MARSHALL	195	129	TAYLOR	101	42
CARLISLE	37	17	HART	72	81	MARTIN	44	13	TODD	27	23
CARROLL	43	21	HENDERSON	383	125	MASON	141	51	TRIGG	74	36
CARTER	142	75	HENRY	69	23	MEADE	85	20	TRIMBLE	19	15
CASEY	48	66	HICKMAN	23	19	MENIFEE	11	19	UNION	97	41
CHRISTIAN	348	261	HOPKINS	379	243	MERCER	117	132	WARREN	741	166
CLARK	233	86	JACKSON	35	14	METCALFE	35	41	WASHINGTON	32	44
CLAY	78	69	JEFFERSON	7107	1705	MONROE	28	47	WAYNE	69	48
CLINTON	43	31	JESSAMINE	327	136	MONTGOMERY	106	44	WEBSTER	86	68
CRITTENDEN	57	25	JOHNSON	120	103	MORGAN	48	25	WHITLEY	210	89
CUMBERLAND	28	35	KENTON	1207	482	MUHLENBERG	178	166	WOLFE	24	11
DAVIESS	849	356	KNOTT	89	93	NELSON	212	64	WOODFORD	248	50
TOTAL IN STATE	29,243	12,394	TOTAL OUT OF STATE	7,071	1,819	TOTAL OUT OF COUNTRY	54	3	GRAND TOTAL	36,368	14,216

TABLE 13
KENTUCKY NURSE LICENSEES
BY COUNTY OF RESIDENCE AND EMPLOYMENT DATA
FY 93

COUNTY	REGISTERED NURSES						LICENSED PRACTICAL NURSES					
	FULL	PART	UNEMP	OTHER	RETRD	UNKN	FULL	PART	UNEMP	OTHER	RETRD	UNKN
ADAIR	65	9	4	1	2	0	32	7	5	4	0	0
ALLEN	55	3	6	0	0	1	43	11	4	1	2	0
ANDERSON	87	12	2	4	0	0	18	4	3	2	0	0
BALLARD	40	7	2	1	0	0	24	8	2	1	0	0
BARREN	153	26	14	4	9	1	197	41	21	8	4	3
BATH	38	2	1	1	1	0	33	1	4	0	0	0
BELL	142	18	14	5	5	2	110	27	24	5	3	4
BOONE	284	148	41	24	6	3	117	56	28	16	3	4
BOURBON	94	22	8	5	6	0	40	5	1	1	0	0
BOYD	398	91	40	14	8	1	153	53	51	5	10	0
BOYLE	124	29	19	4	11	0	134	27	22	23	8	7
BRACKEN	46	6	4	0	0	0	28	4	2	0	0	2
BREATHITT	52	5	5	2	2	1	53	8	3	1	0	1
BRECKINRIDGE	47	17	8	0	3	0	22	8	3	0	0	0
BULLITT	243	43	9	5	4	0	75	22	13	3	1	1
BUTLER	38	7	1	1	3	0	18	3	3	3	0	1
CALDWELL	61	11	4	1	0	1	29	8	5	2	0	1
CALLOWAY	136	30	18	4	8	0	116	31	6	7	7	0
CAMPBELL	372	201	30	18	25	0	133	63	29	8	3	3
CARLISLE	32	3	1	1	0	0	15	1	0	1	0	0
CARROLL	24	17	1	1	0	0	15	3	3	0	0	0
CARTER	121	11	7	2	1	0	51	8	16	0	0	0
CASEY	43	3	2	0	0	0	45	4	14	2	1	0
CHRISTIAN	272	31	28	6	11	0	190	21	25	10	9	6
CLARK	175	40	11	3	4	0	67	11	4	3	1	0
CLAY	62	8	4	1	2	1	54	4	10	0	1	0
CLINTON	37	1	3	0	1	1	27	1	3	0	0	0
CRITTENDEN	50	4	2	1	0	0	15	3	6	0	0	1
CUMBERLAND	25	2	1	0	0	0	29	4	2	0	0	0
DAVIESS	585	136	68	19	40	1	237	54	42	14	8	1
EDMONSON	25	2	0	0	1	0	15	3	1	1	0	0
ELLIOTT	12	3	3	0	1	0	15	1	2	0	0	0
ESTILL	40	5	3	3	1	0	16	2	1	4	0	1
FAYETTE	2385	580	224	86	96	15	486	82	71	25	19	7
FLEMING	75	8	3	3	0	0	21	5	4	1	0	0
FLOYD	226	15	19	5	6	0	158	24	47	9	4	3
FRANKLIN	206	47	26	14	10	0	34	10	4	5	2	0
FULTON	18	5	6	1	0	1	14	3	0	0	0	0
GALLATIN	1	4	0	0	0	0	12	4	3	1	0	0
GARRARD	72	5	2	1	0	1	39	6	6	1	0	1
GRANT	40	14	5	2	1	0	28	19	6	2	0	0
GRAVES	156	30	16	9	3	1	111	25	12	4	0	0
GRAYSON	111	27	5	6	6	0	13	14	5	1	1	1
GREEN	39	3	2	2	1	0	35	3	0	1	0	0
GREENUP	201	52	10	2	11	0	80	26	21	5	4	3
HANCOCK	26	13	0	2	3	0	13	10	4	1	0	0
HARDIN	484	112	40	7	9	3	189	40	37	7	1	9
HARLAN	175	13	16	8	6	0	73	13	19	3	4	1
HARRISON	81	16	5	5	8	0	33	5	6	2	3	0
HART	55	12	4	0	1	0	59	10	6	5	0	1
HENDERSON	274	66	18	9	13	3	100	10	8	5	2	0
HENRY	51	7	10	0	1	0	18	1	3	0	1	0
HICKMAN	18	4	1	0	0	0	17	2	0	0	0	0
HOPKINS	264	72	26	8	9	0	150	37	34	12	9	1
JACKSON	31	2	1	0	1	0	10	2	2	0	0	0
JEFFERSON	4825	1383	427	216	233	23	1184	232	164	62	47	16
JESSAMINE	215	69	25	10	5	3	89	16	19	11	1	0
JOHNSON	94	8	7	6	4	1	58	17	21	4	3	0
KENTON	660	372	98	42	27	8	269	120	49	30	5	9
KNOTT	78	5	4	0	1	1	55	14	22	2	0	0

TABLE 13: KY NURSE LICENSEES BY COUNTY OF RESIDENCE AND EMPLOYMENT DATA, FY 93 (Continued)

COUNTY	REGISTERED NURSES						LICENSED PRACTICAL NURSES					
	FULL	PART	UNEMP	OTHER	RETRD	UNKN	FULL	PART	UNEMP	OTHER	RETRD	UNKN
KNOX	95	5	5	4	1	1	86	7	6	1	0	1
LARUE	59	17	1	2	1	0	19	6	1	1	0	0
LAUREL	156	19	21	3	1	0	62	8	14	3	3	2
LAWRENCE	54	13	0	1	0	0	37	16	7	3	1	1
LEE	15	1	2	0	1	0	12	1	1	0	0	0
LESLIE	57	4	2	3	0	1	34	4	2	0	0	0
LETCHER	120	10	12	5	1	1	109	19	46	5	2	2
LEWIS	30	2	4	2	1	0	27	1	0	0	0	0
LINCOLN	76	11	2	1	0	1	111	18	23	4	4	2
LIVINGSTON	57	11	5	1	1	0	21	2	5	1	2	0
LOGAN	82	18	7	5	0	0	37	9	6	0	1	1
LYON	33	5	2	1	1	1	14	2	4	2	0	0
McCRACKEN	582	98	54	25	26	1	195	44	28	2	9	3
McCREARY	42	3	2	2	0	1	39	8	10	2	0	0
McLEAN	79	10	4	1	2	0	31	6	5	3	1	0
MADISON	385	84	19	11	9	3	72	18	8	5	1	0
MAGOFFIN	31	4	2	1	0	0	24	5	4	1	0	0
MARION	67	5	2	1	0	0	46	14	7	2	0	1
MARSHALL	146	24	16	4	4	1	93	19	8	5	1	3
MARTIN	36	1	5	0	2	0	8	0	5	0	0	0
MASON	99	23	7	2	8	2	32	6	8	3	2	0
MEADE	59	13	10	2	1	0	12	4	4	0	0	0
MENIFEE	8	0	1	0	2	0	15	2	1	0	1	0
MERCER	90	14	4	2	7	0	90	18	15	6	3	0
METCALFE	24	8	2	1	0	0	32	5	3	0	1	0
MONROE	25	1	1	1	0	0	38	2	3	2	1	1
MONTGOMERY	84	10	5	4	3	0	34	5	4	0	1	0
MORGAN	39	2	4	2	0	1	22	1	2	0	0	0
MUHLenberg	138	22	10	2	5	1	98	36	19	10	2	1
NELSON	151	39	13	6	1	2	46	8	7	2	0	1
NICHOLAS	31	1	2	1	1	0	14	0	2	0	1	0
OHIO	108	14	8	3	5	3	53	12	8	1	4	0
OLDHAM	300	120	39	16	8	1	56	15	7	7	2	1
OWEN	35	8	1	0	2	0	18	1	1	1	0	0
OWSLEY	7	2	1	0	0	0	3	1	0	0	1	0
PENDLETON	34	9	5	0	1	1	22	6	1	3	1	1
PERRY	149	10	4	3	3	0	131	21	31	5	2	2
PIKE	223	19	17	5	4	2	207	37	52	16	3	6
POWELL	23	2	1	1	0	0	19	4	3	0	0	0
PULASKI	245	44	18	7	8	0	169	15	25	6	3	1
ROBERTSON	11	1	1	1	0	0	8	2	0	1	0	0
ROCKCASTLE	54	4	0	2	1	0	37	10	1	1	1	1
ROWAN	130	14	6	3	4	0	38	9	9	3	1	1
RUSSELL	53	6	3	2	1	1	30	10	3	5	0	0
SCOTT	122	36	12	6	6	0	51	10	8	1	0	3
SHELBY	142	37	7	4	4	0	27	6	2	1	1	0
SIMPSON	42	14	2	0	0	0	16	3	4	0	0	0
SPENCER	41	5	0	4	0	0	6	3	2	0	0	0
TAYLOR	78	15	5	1	2	0	29	5	2	5	0	1
TODD	18	3	4	0	2	0	16	5	2	0	0	0
TRIGG	59	7	5	2	0	1	32	0	3	1	0	0
TRIMBLE	16	0	0	1	2	0	10	1	2	1	0	1
UNION	65	14	12	5	1	0	30	5	4	1	0	1
WARREN	557	105	43	22	12	2	105	25	31	2	2	1
WASHINGTON	25	5	1	1	0	0	29	4	6	3	2	0
WAYNE	59	6	2	2	0	0	37	5	4	2	0	0
WEBSTER	66	11	5	3	1	0	34	17	11	4	2	0
WHITLEY	164	22	12	8	4	0	65	11	7	3	2	1
WOLFE	20	1	2	0	1	0	10	0	1	0	0	0
WOODFORD	175	42	17	9	4	1	31	9	4	5	1	0
UNKNOWN/INVALID	1	0	0	0	0	0	0	0	0	0	0	0
OUT-OF-COUNTRY	27	12	12	2	0	1	1	0	1	1	0	0
OUT-OF-STATE	4818	1134	622	211	210	75	1119	278	244	89	28	61
GRAND TOTAL	25666	6097	2457	995	975	178	9463	2081	1668	554	260	190

TABLE 14
KENTUCKY BOARD OF NURSING
TEN YEAR COMPARATIVE DATA SUMMARY
FY 84 - FY 93

DATA	1983-84	1984-85	1985-86	1986-87	1987-88	1988-89	1989-90	1990-91	1991-92	1992-93
STAFF FULL TIME PERMANENT	21	23	24	24	26	26	26	30	30	30
SUPPORT	16	16	17	17	18	18	18	21	21	21
RN, JD	5	7	7	7	8	8	8	9	9	9
LICENSEES (TOTAL)	38,925	39,390	41,035	41,249	42,876	43,533	45,556	46,773	49,421	50,584
RN Active	21,997	22,737	25,196	24,399	26,824	26,562	29,158	29,374	32,364	32,524
Inactive	5,910	4,691	4,599	4,757	4,615	4,588	4,469	4,307	4,210	3,844
LPN Active	8,335	10,432	9,509	10,426	9,736	10,779	10,378	11,602	11,459	12,871
Inactive	2,683	1,530	1,731	1,667	1,701	1,604	1,551	1,490	1,388	1,345
ARNP (TOTAL)	656	649	712	672	787	796	937	946	1,087	1,036
Anesthetist	393	392	429	413	503	533	649	657	757	691
Midwife	51	43	47	43	45	39	45	40	49	58
Practitioner	185	191	211	195	215	201	217	227	253	253
Clinical Specialist	8	8	9	10	11	10	11	10	13	21
Combination	19	15	16	11	13	13	15	12	15	13
PROGRAMS OF NURSING (TOTAL)	50	48	50	47	46	50	56	59	62	61
RN (TOTAL)	27	27	29	27	27	30	34	36	37	37
BSN Programs	7	7	9	9	9	10	10	10	10	10
BSN Extension Programs	--	--	--	--	--	1	1	1	1	1
ADN Programs	20	20	20	18	18	20	20	21	22	22
ADN Extension Programs	2	2	1	2	2	2	3	4	4	4
LPN (TOTAL)	23	21	21	20	19	20	22	23	25	25
PN Programs	16	17	17	17	17	17	18	18	18	18
PN Extension Programs	7	4	4	3	2	3	4	5	7	7
NURSING GRADUATES (TOTAL)	2,098	2,095	1,787	1,719	1,777	1,830	1,971	2,410	2,756	3,099
RN (TOTAL)	1,365	1,416	1,268	1,146	1,183	1,193	1,254	1,484	1,754	2,084
BSN Programs	226	246	336	369	401	342	348	320	365	465
Diploma Programs	43	--	--	--	--	--	--	--	--	--
ADN Programs	1,096	1,170	932	777	782	851	906	1,164	1,389	1,619
LPN (TOTAL)	776	679	519	573	594	637	717	926	1,002	1,015
CE PROVIDERS	153	151	170	178	181	187	163	154	163	173
NEW NURSING PRACTICE OPINIONS	5	4	2	4	1	2	3	2	3	2
TOTAL OPINIONS	7	11	13	17	18	20	23	25	28	30

TABLE 14: KBN TEN YEAR COMPARATIVE DATA SUMMARY, FY 84 - FY 93 (Continued)

DATA	1983-84	1984-85	1985-86	1986-87	1987-88	1988-89	1989-90	1990-91	1991-92	1992-93
EXAM CANDIDATES (TOTAL)	2,087	2,186	2,077	2,044	1,730	1,958	2,133	2,353	2,652	3,027
RN TOTAL WRITING IN KY	1,305	1,398	1,425	1,405	1,119	1,338	1,388	1,440	1,622	1,988
LPN TOTAL	782	788	652	639	611	620	754	913	1,030	1,039
RN FIRST TIME	1,206	1,231	1,231	1,239	1,082	1,077	1,145	1,268	1,474	1,847
LPN FIRST TIME	747	711	595	558	584	519	642	784	882	919
ENDORSEMENTS (TOTAL)	924	1,258	1,210	1,223	1,270	1,397	1,358	1,651	1,547	1,577
RN	740	1,053	969	1,022	997	1,128	1,058	1,365	1,201	1,258
LPN	184	205	241	201	273	269	300	286	346	319
REINSTATEMENTS (TOTAL)	718	1,399	1,092	1,381	526	499	515	600	539	559
RN	261	1,318	188	1,265	250	359	259	459	266	445
LPN	457	81	904	116	276	140	256	141	273	114
VERIFICATIONS (TOTAL)	1,542	1,360	1,435	1,595	1,726	1,889	1,751	1,789	1,756	2,005
RN	1,230	1,091	1,135	1,243	1,377	1,508	1,401	1,439	1,367	1,569
LPN	312	269	300	352	349	381	350	350	389	436
BOARD MEETING DAYS	13	14	14	12	13	14	14	12	7	8
COMMITTEE MEETING DAYS	19	25	24	15	15	15	15	15	15	15
HEARING PANEL DAYS	21	15	21	14	17	24	14	17	22	25
HEARINGS	31	28	45	33	35	46	36	44	46	96
AGREED ORDERS	28	31	48	56	48	48	59	53	77	87
CONSENT DECREES	--	3	14	31	20	32	81	90	68	169
DISC. COMPLAINTS RECEIVED	120	140	196	202	215	273	288	411	455	725
DISC. COMPLAINTS RESOLVED	112	143	204	267	226	228	296	377	406	649
ADMINISTRATIVE REGULATIONS										
NEW	3	12	3	1	1	0	0	1	0	1
REVISED	2	15	1	1	25	3	1	2	2	11

Appendix A

Operational Definitions

Kentucky Board of Nursing Operational Definitions

LICENSURE STATUS

CURRENT:	A license which has been renewed for a biennial period which includes the current date.
ACTIVE:	Licensure status which authorizes the holder to use the appropriate licensure title designation (registered nurse, advanced registered nurse practitioner or licensed practical nurse) and engage in the legal scope of practice in the Commonwealth.
INACTIVE:	Licensure status which authorizes the holder to use the appropriate licensure title, but not to engage in the legal scope of nursing practice in the Commonwealth. N.B. Individuals holding inactive licensure status, regardless of state of residence, receive all routine mailings from the Board including the newsletter (<i>Communique</i>) which is published three times annually.

EMPLOYMENT STATUS

FULL TIME:	Employed in nursing practice 40 hours or more per week or in full time capacity as designated by employer.
PART TIME:	Employed in nursing practice less than 40 hours per week or in part time capacity as designated by employer.
NON-NURSING FIELD:	Employed in a capacity not requiring nursing education and licensure.
UNEMPLOYED:	Not employed in any capacity; not officially retired.
RETIRED:	Retired from employment arena.
"UNKN":	Unknown, missing data.
REGISTERED NURSE:	An individual licensed in the Commonwealth as a registered nurse as authorized and defined by KRS 314.
LICENSED PRACTICAL NURSE:	An individual licensed in the Commonwealth as a licensed practical nurse as authorized and defined by KRS 314.
ADVANCED REGISTERED NURSE PRACTITIONER:	An individual who holds licensure as a registered nurse and is registered and designated as an advanced registered nurse practitioner as authorized and defined in KRS 314. Advanced registered nursing practice includes but is not limited to the designations of: nurse anesthetist, nurse midwife, nurse practitioner, and clinical specialist. "Combination" designation denotes an individual who is authorized to practice in two or more designations. The designations are noted as: <div style="display: flex; justify-content: space-between; margin-top: 10px;"><div>ARNP A = Nurse Anesthetist ARNP M = Nurse Midwife ARNP P = Nurse Practitioner</div><div>ARNP S = Clinical Specialist ARNP C = Combination</div></div>

EDUCATIONAL PREPARATION DATA

DIPLOMA RN:	Documentation of completion of an educational program designated by the provider as a "diploma program." Historically, a three-year program housed in a hospital rather than an academic institution.
ASSOC:	Associate Degree. Documentation of completion of a two-year educational program housed in an academic institution. Unless "other" is listed, refers to associate degree in nursing.
BSN:	Bachelor's of Science Degree in Nursing. Documentation of completion of a four-year baccalaureate program in nursing housed in an academic institution.
BACC OTHER:	Baccalaureate Degree earned in field other than nursing.
MSN:	Master's of Science Degree in Nursing. Documentation of completion of a master's program in nursing awarded by an institution of higher learning.
MS OTHER:	Master's of Science Degree earned in field other than nursing.
DOCT:	Doctoral degree earned in any field (PhD, DNSc, DNS, etc.).
PN/VOC SCH:	Practical nurse vocational school. Type of prelicensure education program (school) preparing candidate for licensed practical nurse licensure examination. All but two of these prelicensure programs in the Commonwealth are housed in the vocational educational system; two are private institutions.
ED. EQUIV:	Educational equivalent. Indicates those licensed practical nurses originally licensed under the provisions of a 1950 legislative exemption from demonstrating completion of a Board approved prelicensure program.
NSG EXP:	Nursing Experience. Indicates those licensed practical nurses originally licensed under the provisions of a 1950 legislative exemption from demonstrating completion of a Board approved prelicensure program. (During the two-year exemption period, nursing experience may have substituted for "educational equivalent" above.)
HS INCOMP:	High school incomplete.
HS EQUIV:	High school equivalent. Documentation of earning of a course of study equivalent to a high school diploma, i.e., GED.
HS DIPL:	High school diploma.
ASSOC NSG:	See associate degree in nursing.
PREPARATION:	Educational program type completed in preparation for licensure examination.
HIGHEST LEVEL:	Most advanced education credential currently held.

Appendix B

Statement of Philosophy and Long Range Plan

Kentucky Board of Nursing Statement of Philosophy

It is the philosophy of the Kentucky Board of Nursing that the regulation of the practice of nursing shall achieve public protection by ensuring the competency of licensees who provide nursing care. To that end, the regulation of nursing should be responsive to the changing health needs and priorities of the public by requiring that practitioners demonstrate competency in the application of knowledge, skills, and behavior to meet those needs and priorities. As public protection is the essential role of the Board, the public should have a voice in the action taken to promote its protection.

Licensure establishes an essential level of competency, and indicates that nurses share a common core of knowledge. As such, the purpose of licensure is to set standards for practice and education of individuals in order to protect the public from dishonest and incompetent practitioners. These standards are established in the *Kentucky Nursing Laws* and its attendant administrative regulations. Nursing practice and behavior inconsistent with these standards should lead to disciplinary action.

Critical elements of the regulation of nursing practice include a coherent, generally acceptable definition of nursing, as well as definitions of professional scope and accountability. These definitions should make explicit that the nurse is responsible and accountable for the practice of nursing according to individual preparation and experience, with nursing auxiliaries assisting under prescribed conditions. Further, the licensed nurse is responsible and accountable for continued professional learning throughout her/his career continuum.

Essential components of the regulation of prelicensure nursing education include sufficient qualified faculty and appropriate program curricula and clinical practice laboratories. The curricula should reflect the activities, functions, duties, and responsibilities of the practicing nurse. The clinical practice laboratories should allow prelicensure students opportunities to both generate new knowledge and demonstrate their practice abilities.

As the standards governing nursing practice, continuing education, and prelicensure education are established through the legislative process, the Board has a responsibility to maintain ongoing communication with the legislative branch of government. Concurrently, the complex and dynamic changes occurring in the health care delivery system require that effective communication be maintained with licensees and with local, state and national nursing organizations, health care providers and agencies, governmental units, and nursing education programs.

In summary, the Kentucky Board of Nursing believes that the protection of the public can best be accomplished through ensuring the competency of licensees who provide nursing care, and by establishing standards that allow for the fullest development of nursing practice, commensurate with its potential social contribution.

Adopted: August 1990

Kentucky Board of Nursing Long Range Plan

INTRODUCTION

The purpose of long range planning is to provide direction for the agency based on its statutory charges and mission. To accomplish this purpose, the Study and Planning Committee of the Kentucky Board of Nursing prepares for Board action a comprehensive document which reflects current activities and future directions for the operation of the total agency.

MISSION, ASSUMPTIONS AND GOALS

A statement on the mission and assumptions introduces the document and includes broad goals adopted by the Board.

STRATEGIC PLAN

The strategic plan includes three major parts:

- Statement of broad goals.
- Statement of components (strategic goals) for each broad goal.
- Statement of strategic approaches to accomplish the broad goals and respective components.

OPERATIONAL PLAN

The operational plan further specifies the strategic plan by the addition of the following:

- Major activities for strategic approaches.
- Responsible work body.
- Decision-making body.
- Target date.

The Strategic Plan extends over a three to five year period; the Operational Plan extends over a two to three year period. The latter may need revision/updating annually while the former should be reviewed and updated at least biennially.

DEFINITIONS

MISSION STATEMENT: The fundamental reasons for the existence of the organization. The statement defines the uniqueness of the organization and serves as a guide for the future.

GOAL: A broad statement of outcome that contributes to the achievement of the mission.

ASSUMPTIONS: Temporary estimates regarding important probable developments which cannot be predicted with accuracy and over which there is no significant control by the organization.

STRATEGY: A course of action to accomplish a goal.

- a. Strategic Goal: A statement which defines the components of a broad goal.
- b. Strategic Approach: A statement which includes selected methods for achieving a goal.

MAJOR ACTIVITY: A specific work effort that results in a measurable outcome contributing to the achievement of a goal.

Kentucky Board of Nursing Long Range Plan 1993-1997

MISSION

The mission of the Commonwealth of Kentucky Board of Nursing is to enforce public policy related to the safe and effective practice of nursing in the interest of public welfare. As a regulatory agency of state government, the Board of Nursing accomplishes this mission as authorized by *Kentucky Revised Statutes* and attendant administrative regulations. In accomplishing its aims, the Board of Nursing licenses and registers qualified nurses and advanced registered nurse practitioners, approves providerships for mandatory continuing education and prelicensure programs of nursing, enforces the *Nursing Practice Act*, and issues nursing practice opinions. In addition, the Board of Nursing cooperates with individuals, groups, organizations, and other state and national entities by the provision of appropriate services to promote safe and effective nursing care for the citizens of the Commonwealth.

GOALS AND ASSUMPTIONS

GOAL I: *Ensure that persons licensed as nurses and registered as advanced registered nurse practitioners in Kentucky are qualified according to requirements to provide the citizens of the Commonwealth with safe and effective nursing care.*

ASSUMPTIONS:

1. Method of licensure examination administration will change.
2. More practice complaints will be reported.
3. Registered nursing practice will expand to include current scopes of advanced nursing practice.
4. Emphasis on determination of competency will continue.
5. Questioning of mandatory continuing education for validation of competency will increase.
6. Changes in educational requirements for licensure will occur.
7. Scope of nursing practice will expand for licensees.
8. Nursing curricula will change to reflect non-traditional delivery systems.
9. Prelicensure educational programs will require an internship/preceptorship component.
10. There will be an increased societal interest in the arena of infectious diseases.
11. The role of regulatory agencies will be affected by the 1991 Americans With Disabilities Act.
12. Geopolitical events will dictate new approaches to the credentialing of foreign candidates for professional and occupational licensure.

GOAL II: *Optimize human and fiscal resources to improve services and control costs.*

ASSUMPTIONS:

1. Automation will enhance Board operation.
2. Nurse manpower data will be valued and used.
3. An increase in fees or identification of other sources of revenue to maintain current level of services will be needed.
4. Difficulty for nurses and consumers to serve on KBN relative to time, energy, and conflicts will occur.
5. Changes in educational requirements for licensure will have ramifications for Board composition.

LONG RANGE PLAN 1993-1997 (Continued)

GOAL III: *Assert leadership in state government and the public arena in the regulation of nurses, nursing education, and nursing practice to promote the delivery of safe and effective nursing services.*

ASSUMPTIONS:

1. Shortages of nursing manpower will intensify.
2. Qualified students will select other professions.
3. A resurgence of monitoring KBN activities by other groups will occur.
4. The need for education regarding issues surrounding the regulation of nursing will continue.
5. Kentucky nurses will gain national prominence.
6. More nurses will be in independent practice.
7. The number of nurses employed outside of hospitals will increase.
8. Increase in non-licensed persons performing nursing duties will continue.
9. Efforts to implement institutional licensure will resurface.
10. Kentucky Legislature will consider reorganization of state government.
11. Inaccessability of health care for citizens will jeopardize public safety.
12. Corporate control of health care delivery systems will expand.
13. The expansion of interdisciplinary approaches to health care delivery will impact and change the role and practice of nurse licensees.

Approved: 6/89

Revised: 6/92

GOAL I: *Ensure that persons licensed as nurses and registered as advanced registered nurse practitioners in Kentucky are qualified according to requirements to provide the citizens of the Commonwealth with safe and effective nursing care.*

STRATEGIC APPROACHES (1-3 YEARS)

- IA1. Promulgate administrative regulations for prelicensure programs of nursing approval.

- IA2. Study prelicensure educational requirements for eligibility for licensure as a nurse.

- IA3. Assist prelicensure programs of nursing education with compliance with administrative regulations.

- IB1. Promulgate administrative regulations for mandatory continuing education for nurses.

- IB2. Determine comparability of standards of other organizations with those of the Board administrative regulations for mandatory continuing education.

- IB3. Assist approved providers with compliance with administrative regulations for mandatory continuing education.

- IC1. Investigate methods for determining competence of applicants/licensees/registrants.

- IC2. Audit licensees for compliance with continuing education (including AIDS education) requirements for renewal of licensure.

- IC3. Monitor impact of limited licensure/
disability status.

- IC4. Maintain sound regulatory requirements for licensure and registration.

STRATEGIC PLAN 1993-1997 (Continued)

ID. Enforce mandatory licensure of individuals practicing as nurses.

IE. Enhance disciplinary action program to safeguard the public and to ensure due process rights of applicants/ licensees/registrants.

ID1. Examine mechanisms for monitoring licensure status.

ID2. Cooperate with employers, regulatory and other official agencies regarding licensure of nurses.

IE1. Study statutes and administrative regulations regarding investigation and disciplinary activities.

IE2. Analyze data on disciplinary actions and limitation of licenses.

IE3. Analyze types of complaints reported for implications for nursing practice.

IE4. Maintain a sound investigation and disciplinary action program.

GOAL II: Optimize human and fiscal resources to improve services and control costs.

STRATEGIC GOALS (3-5 YEARS)

IIA. Ensure optimal development of human resources.

IIB. Assure sound fiscal planning for agency operation.

STRATEGIC APPROACHES (1-3 YEARS)

IIA1. Study organization of Board agency and operation.

IIA2. Provide orientation and development program for members of the Board, councils and committees.

IIA3. Provide orientation and development program for staff.

IIA4. Implement state affirmative action plan.

IIA5. Evaluate effectiveness of master staffing plan to provide needed services and revise as needed.

IIA6. Maintain recognition program for service as volunteer committee and council, staff and Board members.

IIB1. Maintain fiscal soundness and stability.

IIB2. Monitor fiscal effectiveness of agency operation.

STRATEGIC PLAN 1993-1997 (Continued)

- IIC. Provide facilities to enhance the Board and agency operation.
 - IIC1. Evaluate environmental needs for the Board and agency operation.
 - IIC2. Maintain comprehensive plan for office automation.
 - IIC3. Evaluate effectiveness of master plan for office automation.
- IID. Maximize effectiveness of operational systems for implementing statutory mandates.
 - IID1. Revise recordkeeping system to eliminate duplication.
 - IID2. Review operational systems for implementing policy.
- IIE. Strengthen planning processes for agency effectiveness.
 - IIE1. Utilize established planning process for agency.
 - IIE2. Evaluate effectiveness of total agency operation.

GOAL III: *Assert leadership in state government and the public arena in the regulation of nurses, nursing education, and nursing practice to promote the delivery of safe and effective nursing services.*

STRATEGIC GOALS (3-5 YEARS)

- IIIA. Support sound legislation for the regulation of nurses, nursing education and nursing practice.
- IIIB. Participate as a Member Board of the National Council of State Boards of Nursing (NCSBN).
- IIIC. Interpret and promote integrity of legal scope of nursing practice.

STRATEGIC APPROACHES (1-3 YEARS)

- IIIA1. Study provisions of *Kentucky Nursing Laws* and related statutes for the purpose of needed revisions.
- IIIA2. Plan strategy for passage of statutory changes as needed.
- IIIA3. Monitor regulatory proposals and enactments.
- IIIB1. Participate in activities to fulfill membership responsibilities and as requested by NCSBN.
- IIIB2. Promote involvement of volunteers and selected individuals for the various offices, committees and work groups of NCSBN.
- IIIB3. Provide representation for NCSBN meetings and assemblies.
- IIIC1. Study issues involving the legal scope of nursing practice.
- IIIC2. Update advisory opinion statements issued by the Board.

STRATEGIC PLAN 1993-1997 (Continued)

- IIID. Cooperate with individuals, groups and organizations to address nursing issues and concerns.
 - IIID1. Enhance communication strategies with appropriate individuals and groups.
 - IIID2. Strengthen relationship with programs for impaired nurses.
 - IIID3. Support research relevant to the regulation of nurses, nursing education and nursing practice.
 - IIID4. Develop innovative services for the promotion of public protection.
 - IIID5. Increase the public and affected parties' understanding of the regulation of nursing and the contribution of nursing to society.
- IIIE. Disseminate information on the regulation of nurses and advanced registered nurse practitioners, and nursing education and practice.
 - IIIE1. Evaluate information needed by applicants/licensees/registrants/approved entities for compliance with regulations.
 - IIIE2. Enhance communication strategies with individuals and entities affected by regulation.
- IIIF. Establish a comprehensive data base of prelicensure and licensure populations.
 - IIIF1. Study existing system for collection and maintenance of data.
 - IIIF2. Cooperate with individuals and local/state/national organizations and agencies involved in data collection and research.
- IIIG. Participate in activities aimed at sound health care reforms.
 - IIIG1. Study proposals on health care reform.
 - IIIG2. Provide data as needed to requesting parties.
 - IIIG3. Provide representation as needed/requested.

Approved: 6/89
Revised: 6/92