

THE COMMONWEALTH OF KENTUCKY  
BOARD OF NURSING

ANNUAL REPORT  
1989-1990

Prepared by Staff of the  
Kentucky Board of Nursing  
October 1990

KENTUCKY BOARD OF NURSING  
4010 Dupont Circle, Suite 430  
Louisville, Kentucky 40207-4875  
(502) 897-5143

Cost of printing paid from state funds.



## KENTUCKY BOARD OF NURSING

(502) 897-5143

4010 Dupont Circle — Suite 430  
Louisville, Kentucky 40207-4875

WALLACE G. WILKINSON  
GOVERNOR

October 29, 1990

The Honorable Wallace G. Wilkinson  
Office of the Governor  
Commonwealth of Kentucky  
State Capitol Building  
Frankfort, KY 40601

Dear Governor Wilkinson:

The Board and staff of the Kentucky Board of Nursing are pleased to submit the Annual Report for fiscal year 1989-90.

The following pages reflect the intense work of the Board during the past year. We are appreciative of the support and assistance provided by you and your staff, as we strive to assure that safe and effective nursing care is provided by nurses for the citizens of the Commonwealth.

Very sincerely yours,

ANGELA J. LASLEY, BSN, RN  
PRESIDENT

A handwritten signature in dark ink, appearing to read "Sharon M. Weisenbeck".

By: Sharon M. Weisenbeck, MS, RN  
Executive Director

ss

## CONTENTS

	Page
LIST OF TABLES.....	3
ACKNOWLEDGEMENTS.....	5
PREFACE.....	7
OPERATIONAL DEFINITIONS.....	9
 PART I. COMPOSITION OF BOARD, COMMITTEES, COUNCILS AND STAFF	
Board of Nursing - Structures and Operation.....	13
Board of Nursing Membership.....	16
Board Meetings.....	17
Advisory Council.....	18
Nurse Practice Council.....	19
Board Committees and Membership.....	20
Regulation of Nurses and Nursing Education and Practice	
Organization Chart (Program).....	21
Organization Chart (Staff).....	22
Administrative Staff.....	23
State Government Advisors.....	24
Financial Report/Fee Schedule.....	25
 PART II. BOARD OF NURSING INVOLVEMENTS AND LEADERSHIP ACTIVITIES	
Board Involvements and Leadership Activities.....	27
Board Appointed Representatives.....	30
 PART III. BOARD ADMINISTRATIVE PROGRAMS	
Kentucky Administrative Regulations.....	35
Nursing Education.....	37
Prelicensure Nursing Education Programs and Extension Programs....	38
Mandatory Continuing Education.....	45
Nursing Practice.....	51
Investigation and Disciplinary Action.....	52
 PART IV. LICENSURE AND REGISTRATION ACTIVITIES	
Nurse Credentials and Licensure Requirements.....	55
Licensure Examinations.....	56
Registered Nurse Licensure by Examination.....	57
Licensed Practical Nurse Licensure by Examination.....	59
Licensure by Endorsement.....	61
Advanced Registered Nurse Practitioners.....	64
Kentucky Nurse Licensees.....	65
 PART V. LONG RANGE PLAN.....	79

## LIST OF TABLES

1.	Prelicensure Programs of Nursing - Graduates by Program Type, 1989-90....	39
2.	Kentucky Prelicensure Program Graduates 1983-1990.....	41
2a.	Comparative Data: Kentucky Prelicensure Program Candidates by Program Type 1984-90.....	42
3.	Prelicensure Programs of Nursing - Year Established and Number of Graduates, 1986-90.....	43
4.	Approved Providers of Mandatory Continuing Education by Category.....	46
5.	Disciplinary Actions, 1989-90.....	54
6.	National Council Licensure Examination - Registered Nurse (NCLEX-RN) Comparative Results: All U.S. Jurisdictions and Kentucky First Time Writers.....	57
7.	National Council Licensure Examination: NCLEX-RN Percent Pass-Rate by Program.....	58
8.	National Council Licensure Examination - Practical Nurse (NCLEX-PN) Comparative Results: All U.S. Jurisdictions and Kentucky First Time Writers.....	59
9.	National Council Licensure Examination: NCLEX-PN Percent Pass-Rate by Program.....	60
10.	Endorsement/Verification Activity: RN and LPN.....	61
11.	Licensees by Endorsement - Jurisdiction of Original Licensure.....	62
12.	Kentucky Licensees Verified to Other Jurisdictions.....	63
13.	Advanced Registered Nurse Practitioner Registrations.....	64
14.	Licensure Totals By Licensure Type and Status.....	65
15.	Kentucky Licensees By Gender and Marital Status.....	66
16.	Kentucky Registered Nurses By Highest Educational Level.....	66
17.	Kentucky Licensees By Type of License and County of Residence.....	67
18.	Statistics By County of Residence - RN & LPN Employment Data.....	68
19.	Registered Nurse Statistics By County of Residence and Educational Data..	73
20.	Summary of Ten Year Comparative Data by Fiscal Year.....	76

## EXHIBIT

1.	Geographic Distribution of Kentucky Programs of Nursing By Type.....	37
----	--	----

### ACKNOWLEDGEMENTS

THE KENTUCKY BOARD OF NURSING is pleased to present the 1989-90 Annual Report. This report reflects the ongoing commitment to insure safe and effective nursing services for the citizens of the Commonwealth. Many governmental entities have directed concerted efforts toward the continued improvement of nursing education and nursing services. They include the following:

- Kentucky General Assembly
- Legislative Research Commission
- Office of the Governor
- Governor's Office for Policy and Management
- Office of the Attorney General
- Office of the State Auditor of Public Accounts
- Cabinet for Finance and Administration
- Office for Investment and Debt Management
- Office of Vocational Education
- Department of Personnel
- Council on Higher Education
- Department of Information Systems
- Kentucky Information Systems Commission

In addition, private agencies, professional and voluntary associations, and individuals have invested time and energy in support of the activities of the Board of Nursing. Likewise, the statutory mandates of the Board of Nursing have been met through the contributions by the members of the Advisory Council to the Board and the Nurse Practice Council, and volunteer committee members and staff to the Board. With the dedicated assistance provided by these groups and individuals, the mission of the Board was accomplished with dispatch. Appreciation is expressed for this interest, cooperation, and support to achieve sound regulatory practices in the interest of public protection for the citizens of the Commonwealth of Kentucky.

October 1990

KENTUCKY BOARD OF NURSING

## PREFACE

The Kentucky Board of Nursing is the state government agency authorized by Kentucky Revised Statutes Chapter 314 (Kentucky Nursing Laws), to approve and regulate nursing education and practice, to administer licensure examinations and license qualified graduates of approved prelicensure programs of nursing, to approve providers of continuing education, to license qualified nurse applicants, and to register and designate qualified advanced registered nurse practitioner applicants.

Four major goals provide guidance in fulfilling the statutory mission of the Board of Nursing. The 1989-90 ANNUAL REPORT of the Board of Nursing summarizes the functions carried out by the Board to accomplish its mission and goals. The major programs and activities of the Board of Nursing are encompassed within the mission and goals as described in this Report and include: prelicensure nursing education, mandatory continuing education, nursing practice, credentials and licensure, investigation and disciplinary action, administrative regulations of the Board, office operation, and state and national involvements. Information is also provided on agency structures and finances.

Information contained throughout this 1989-90 ANNUAL REPORT of the Board of Nursing shows the depth and scope of the activities of Board members and staff, and it highlights the multi-faceted involvements of the Board of Nursing. The Report information documents that the Board of Nursing is achieving its statutory mission to protect the public by licensing and registering only those individuals who are competent and effective as nurse licensees.

The ongoing development and implementation of sound regulatory practices in the interest of public protection for the citizens of the Commonwealth of Kentucky, is a dynamic process. The Long Range Plan 1989-1994 document (included on pages 79 through 88) sets forth the goals and strategic approaches to meet the continuing need for protection of the public as mandated by the statutory mission of the Board.

Sharon M. Weisenbeck  
Executive Director  
Kentucky Board of Nursing

KENTUCKY BOARD OF NURSING  
LICENSURE/STATISTICAL REPORT  
OPERATIONAL DEFINITIONS

LICENSURE STATUS

- ACTIVE:           Licensure status which authorizes the holder to use the appropriate licensure title designation (registered nurse, advanced registered nurse practitioner or licensed practical nurse) and engage in the legal scope of practice in the Commonwealth.
- CURRENT:          A license which has been renewed for a biennial period which includes the current date.
- INACTIVE:         Licensure status which authorizes the holder to use the appropriate licensure title, but not to engage in the legal scope of nursing practice in the Commonwealth. N.B. Individuals holding inactive licensure status, regardless of state of residence receive all routine mailings from the Board including the newsletter (Communique) which is published three times annually.

EMPLOYMENT STATUS

- ADVANCED  
REGISTERED  
NURSE  
PRACTITIONER:    An individual who holds licensure as a registered nurse and is registered and designated as an advanced registered nurse practitioner as authorized and defined in KRS 314.
- Advanced registered nursing practice includes but is not limited to the designations of: nurse anesthetist, nurse midwife, nurse practitioner, and clinical specialist. "Combination" designation denotes an individual who is authorized to practice in two or more designations. The designations are noted as:
- ARNP A = nurse anesthetist  
ARNP M = nurse midwife  
ARNP P = nurse practitioner  
ARNP S = clinical specialist  
ARNP C = combination
- FULL TIME:        Employed in nursing practice 40 hours or more per week or in full time capacity as designated by employer.
- LICENSED  
PRACTICAL  
NURSE:            An individual licensed in the Commonwealth as a licensed practical nurse as authorized and defined by KRS 314.
- NON-NURSING  
FIELD:            Employed in an capacity not requiring nursing education and licensure.
- PART TIME:        Employed in nursing practice less than 40 hours per week or in part time capacity as designated by employer.



REGISTERED NURSE: An individual licensed in the Commonwealth as a registered nurse as authorized and defined by KRS 314.

RETIRED: Retired from employment arena.

UNEMPLOYED: Not employed in any capacity; not officially retired.

"UNKN": Unknown, missing data.

#### EDUCATIONAL PREPARATION DATA

ASSOC: Associate Degree. Documentation of completion of a two-year educational program housed in an academic institution. Unless "other" is listed, refers to associate degree in nursing.

ASSOC NSG: See associate degree in nursing.

BACC  
OTHER: Baccalaureate Degree earned in field other than nursing.

BSN: Bachelor's of Science Degree in Nursing. Documentation of completion of a four-year baccalaureate program in nursing housed in an academic institution.

DIPLOMA RN: Documentation of completion of an educational program designated by the provider as a "diploma program." Historically, a three-year program housed in a hospital rather than an academic institution.

DOCT: Doctoral degree earned in any field (PhD, DNSc, DNS, etc.)

ED. EQUIV: Educational equivalent. Indicates those licensed practical nurses originally licensed under the provisions of a 1950 legislative exemption from demonstrating completion of a Board approved prelicensure program.

HIGHEST  
LEVEL: Most advanced education credential currently held.

HS DIPL: High school diploma.

HS EQUIV: High school equivalent. Documentation of earning of a course of study equivalent to a high school diploma, i.e., GED.

HS INCOMP: High school incomplete.

MS  
OTHER: Master's of Science Degree earned in field other than nursing.

MSN: Master's of Science Degree in Nursing. Documentation of completion of a master's program in nursing awarded by an institution of higher learning.

NSG EXP: Nursing Experience. Indicates those licensed practical nurses originally licensed under the provisions of a 1950 legislative exemption from demonstrating completion of a Board approved prelicensure program. (During the two-year exemption period, nursing experience may have substituted for "educational equivalent" above.)

PN/VOC SCH: Practical nurse vocational school. Type of prelicensure education program (school) preparing candidate for licensed practical nurse licensure examination. All but two of these prelicensure programs in the Commonwealth are housed in the vocational educational system; two are private institutions.

PREPARATION: Educational program type completed in preparation for licensure examination.

## PART I

### COMPOSITION OF BOARD, COMMITTEES, COUNCILS AND STAFF

#### BOARD OF NURSING - STRUCTURES AND OPERATION

On March 13, 1914, a law was passed by the Kentucky General Assembly which established the "Kentucky State Board of Nurse Examiners of Trained Nurses". In May of that year, Governor McCreary appointed five members to the Board, and on June 17, 1914, the first meeting of the Board was held at the Capitol Hotel in Frankfort. Thus, the calendar year 1989 marked the 75th Anniversary of what is now known as the Kentucky Board of Nursing.

By Executive Order, Governor Wallace G. Wilkinson, proclaimed 1989 THE YEAR OF THE KENTUCKY NURSE, in celebration of this 75th Anniversary of the establishment of the Kentucky Board of Nursing. To mark this historic event, the Board hosted special activities which coincided with the 1989 Annual Conference, held April 20 and 21, 1989. Additionally, the numerous proclamations from the various county judge executives that were received through the efforts of the members of the Kentucky Nurses Association and the Kentucky State Association of Licensed Practical Nurses extended the celebration activities throughout the 1989 calendar year, and increased awareness of the contributions of nurses for the public at large. This effort and countless others by nurses, were recognized and sincerely appreciated by the Board members and staff. The year of celebration was officially closed with a formal reception held in October 1989 for members of professional associations and state government agencies. Those early nurses whose pioneering spirit made possible the year's celebration, have been served well by a proud legacy.

Members of the Ad Hoc 75th Anniversary Planning Committee deserve a special thank you. The members were:

Glenda Bourne, ARNP (Louisville)  
Charlotte Denny, RN (Lexington)  
Elizabeth Devine, LPN (Ft. Wright)  
Pamela Hagan, RN, Chairperson (Louisville)  
Gaynor Hatfield, RN (Berea)

Melda Sue Logan, RN (Jeff)  
Patricia Maggard, LPN (Grayson)  
Barbara Mizell, LPN (Glasgow)  
Sally Mullins, ARNP (Somerset)  
Nadine Turner, RN (Murray)

Through its study and planning activities, the Board continues to update the Long Range Plan which consists of three documents: 1) Statement on Mission, Broad Goals and Assumptions; 2) Strategic Plan 1989-1994; and 3) Operational Plan 1990-1992. The long range planning process includes not only updating of the plan but evaluation of the total agency operation as well. An Information Resources Plan, as mandated by the Kentucky Information Systems Commission, also was updated to provide continuing direction for efficiency in operations. Further, the plan for development of personnel resources was revised and a 1990-1992 Biennial Budget was adopted and approved by the Kentucky General Assembly during its 1990 regular session.

All meetings of the Board and its committees and councils were held in open session except for the few exemptions as noted in the open meetings law. The

meetings were advertised in the Board communications with licensees and the public as required. In total, the Board held one special and six regular meetings including the annual meeting. The standing and ad hoc committees of the Board, serving in an advisory capacity, continued to expedite the Board decision making processes. The composition of the committees included volunteer members who provided a broader based perspective and viewpoint of interested parties and groups affected by regulatory practices.

The orientation program, as expanded in 1986, was continued. A dinner meeting for all Board, committee and council members was held as part of the orientation program. This general session included a discussion of regulatory issues and information on Board structures and operation. In addition, sessions held at the time of the first meeting of the various groups, enhanced the orientation for each group by focusing on specific programs and issues.

In its 1988 session, the Kentucky General Assembly increased the membership of the Board of Nursing by one registered nurse. This registered nurse member was nominated by the Kentucky Association of Health Care Facilities for appointment by the Governor and began a term to extend through June 1993.

In a time of continuing fiscal constraint, the finances of the Board were again monitored carefully. As part of the budgetary planning process, revenues and expenditures were projected for a five year period, and the past ten year finances of the Board were reviewed. Additionally, investment of the agency's fund balance, as authorized by the revision to the Nursing Practice Act passed by the 1986 General Assembly, was diligently carried out according to approved procedures of the Office of Investment and Debt Management.

In compliance with the enactment of the 1986 Personnel Omnibus Bill, which mandated revisions to KRS Chapter 18A, the Kentucky Employee Performance Evaluation System, implemented during the 1987 year, was once again refined by staff managers and supervisors. This refinement of the system included participation in the audits of staff evaluations as carried out by the Department of Personnel.

The commitment of the members of the Board and the dedication of its staff continued in unabated fashion. Appreciation for this service by Board staff and members was expressed through the recognition programs of the agency and executive branch of state government. The following staff were awarded pins in recognition of years of service:

Mary A. Romelfanger, Deputy Executive Director - 10 years  
Robert "Scott" Bailey, Computer Operations Specialist - 5 years  
Cynthia R. Marlow, Credentials Clerk - 5 years  
L. Alethea Taylor, Education/Practice Units Secretary - 5 years  
Maria D. Wheat, Executive Secretary - 5 years

The Employee of the Quarter Recognition Program was initiated as a staff effort in January 1990. The following individuals were selected by their fellow staff persons as recipients of the award during the first two quarters of calendar 1990:

Robert "Scott" Bailey, Computer Operations Specialist  
Maria D. Wheat, Executive Secretary

Beverly A. Owen, Data Control Supervisor, was recognized by Governor Wallace G. Wilkinson for attaining Career Employee Status by sixteen years of service to the Commonwealth of Kentucky, all of which have been as an employee with the Board of Nursing.

Retiring Board members Mauhee Edmondson, RN; Martha O. Erwin, RN; and Ruth Ann Steele, LPN; were honored and thanked for their service. These members, each completing one four-year term, contributed substantially by their very active participation in carrying out member responsibilities.

Of particular note, the agency was granted a Gubernatorial Award for "the achievement of the greatest strides toward compliance with the goals for minorities and females in the workplace." Additionally, the Kentucky Easter Seal Society cited with acclaim the Kentucky Board of Nursing for contributions to the 1990 State Employees Easter Seal Campaign, and lastly, Board and staff members participated in Walk America.

## KENTUCKY BOARD OF NURSING

### Membership

The members of the Kentucky Board of Nursing for the period ending June 30, 1990 included:

<u>Board Member</u>	<u>Address</u>	<u>Term Expires</u>
Mauhee Edmondson, RN	Elizabethtown, Kentucky	1990
Martha Erwin, RN	Murray, Kentucky	1990
Susan Hockenberger, ARNP	Louisville, Kentucky	1993
Virginia Jenkins, RN	Richmond, Kentucky	1991
M. Susan Jones, RN	Bowling Green, Kentucky	1992
Wilma Jones, RN	Hazard, Kentucky	1992
Angela Lasley, RN	Munfordville, Kentucky	1991
Patricia Maggard, LPN	Grayson, Kentucky	1991
Janice Oster, LPN	Danville, Kentucky	1992
Mary Ousley, RN	Richmond, Kentucky	1993
Diane Payne, Citizen-at-Large	Lexington, Kentucky	1993
Ruth Ann Steele, LPN	LaGrange, Kentucky	1990

### Officers

<u>Elected June, 1990</u>	<u>Immediate Past</u>	<u>Past</u>
President: Angela Lasley	Virginia Jenkins	Patricia Calico
Vice President: M. Susan Jones	Angela Lasley	Virginia Jenkins
Secretary: Patricia Maggard	Patricia Maggard	Ruth Ann Steele
Financial Officer: Virginia Jenkins	Mauhee Edmondson	Mauhee Edmondson

### Board Meetings

The Kentucky Nursing Practice Act states that the Board shall meet at least annually.

During the 1989-90 fiscal year, the Board met on the following dates:

<u>Date</u>	<u>Type of Meeting</u>
August 17 and 18, 1989	Regular Meeting
September 13, 1989	Advisory Council
October 10 and 11, 1989	Regular Meeting
November 15, 1989	Special Meeting
December 7 and 8, 1989	Regular Meeting
February 15 and 16, 1990	Regular Meeting
April 12 and 13, 1990	Regular Meeting
June 7 and 8, 1990	Annual Meeting

The Board met eight times during the year 1989-90 for a total of fourteen days. The Board members also participated in other activities including examinations and committee meetings. Hearings were conducted by hearing panels which consisted of two Board members each. The members served equal time on the hearing panels. The estimated average time for each member to attend meetings, administer examinations, serve on hearing panels and represent the Board was 54 days for the year.

### ADVISORY COUNCIL

The Advisory Council to the Kentucky Board of Nursing was created by the Kentucky Legislature in 1966. KRS 314.121(6) states:

The Governor shall appoint an advisory council to the board consisting of seven (7) members to be selected one (1) each from lists submitted by Kentucky Medical Association, Kentucky Hospital Association, Kentucky Association of Health Care Facilities, Kentucky Nurses Association, Kentucky State Association of Licensed Practical Nurses, Kentucky Dental Association and Kentucky Pharmacists Association. The members of the Advisory Council and their respective organizations for the period ending June 30, 1990 included:

#### Advisory Council Member

#### Organization

Laura Stone	Kentucky Pharmacy Association
Mary Gail Wilder	Kentucky Nurses Association
Bernard Tamme	Kentucky Hospital Association
Elizabeth A. Fultz	Kentucky State Association of Licensed Practical Nurses
S. Randolph Scheen	Kentucky Medical Association
Brenda Williams	Kentucky Association of Health Care Facilities
Fred Look	Kentucky Dental Association

During 1989-90, the Advisory Council met on September 13, 1989.



### Nurse Practice Council

The enactment of KRS 314.193, effective July 1978, created the Nurse Practice Council as an advisory body to the Board of Nursing. The Council has the duty of recommending standards in the performance of acts by advanced registered nurse practitioners which require additional education and which are recognized jointly by the nursing and medical professions.

#### Membership 1989-90

Advanced Registered Nurse Practitioner-Anesthetist  
Larry Owens, ARNP

Advanced Registered Nurse Practitioner-Midwife  
Marilyn J. Musacchio, ARNP

Advanced Registered Nurse Practitioner-Practitioner  
Pamela King, ARNP

Kentucky Board of Nursing  
Mauhee Edmondson, RN, Chairperson  
Angela J. Lasley, RN

Kentucky Medical Association  
R.J. Phillips, MD

Kentucky Board of Medical Licensure  
William P. McElwain, MD  
Frank M. Gaines, Jr. MD

Kentucky Board of Pharmacy  
Michael C. Sheets, RPh

The Nurse Practice Council met once during 1989-90. Through the work of the Council, the Board reviewed administrative regulations governing advanced registered nursing practice and reviewed the "American Association of Nurse Anesthetist Professional Practice Manual for the Certified Registered Nurse Anesthetist" (c1989). The Board received information from the Council on 90 BR 392 addressing advanced registered nurse practitioner prescribing privileges.

## KBN Committees and Membership

### Standing Committees\*

#### Education Committee

Susan Jones, RN, Chairperson  
Martha Erwin, RN  
Janice Oster, LPN  
Patricia Calico, RN (through 1/90)  
Susan Hockenberger, ARNP (effective 3/90)  
Celia Fish, RN, RN Prelicensure Education  
Imogene Perry, RN, LPN Prelicensure Education  
Barbara Mason, RN, RN Continuing Education  
Bonnie Cummins, RN, LPN Continuing Education

#### Study and Planning Committee

Patricia Maggard, LPN, Chairperson  
Susan Jones, RN  
Angela Lasley, RN  
Mauhee Edmondson, RN  
Diane Payne, Citizen-at-Large  
(Effective 3/90)  
Janice Oster, LPN Alternate  
Tassa Wigginton, Citizen-at-Large  
(through 1/90)

#### Practice Committee

Angela Lasley, RN, Chairperson  
Ruth Ann Steele, LPN  
Virginia Jenkins, RN  
Wilma Jones, RN  
Mary Ousley, RN  
Mary Ann Landherr, RN, LPN Educator  
Linda Marsh, RN, KNA Representative  
Barbara Mizell, LPN, KSALPN Representative  
Mary Hazzard, RN, RN Educator

#### Ad Hoc/Recruitment

Susan Jones, RN, Chairperson  
Angela Lasley, RN  
Mauhee Edmondson, RN  
Patricia Maggard, LPN

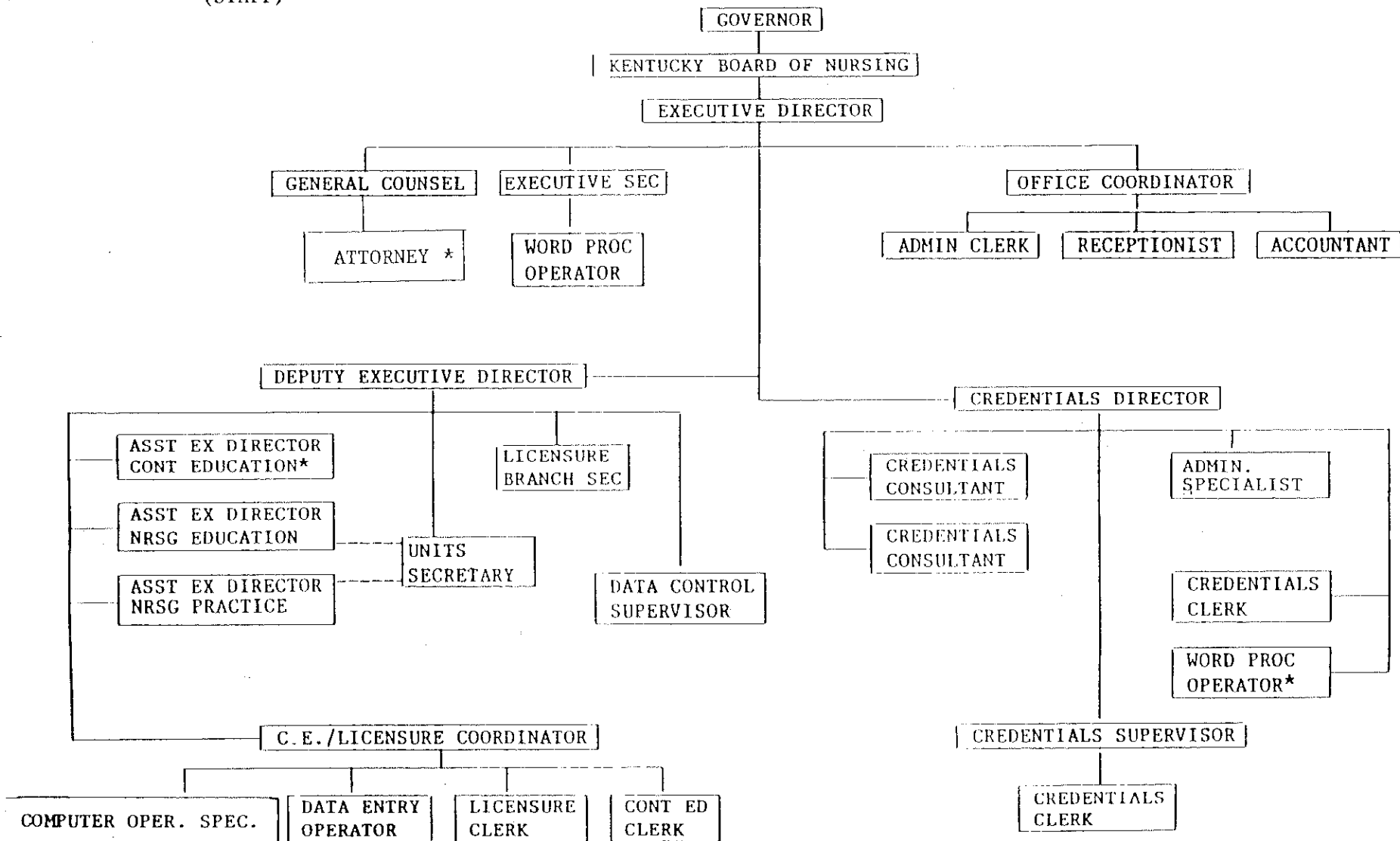
The KBN standing committees met during 1989-1990 as follows:

<u>Committee</u>	<u>No. Meetings</u>	<u>No. Days</u>
Education	5	5
Practice	5	5
Study and Planning	5	5

\*KBN President and Executive Director are Ex Officio Members.

ORGANIZATION CHART  
(STAFF)

COMMONWEALTH OF KENTUCKY

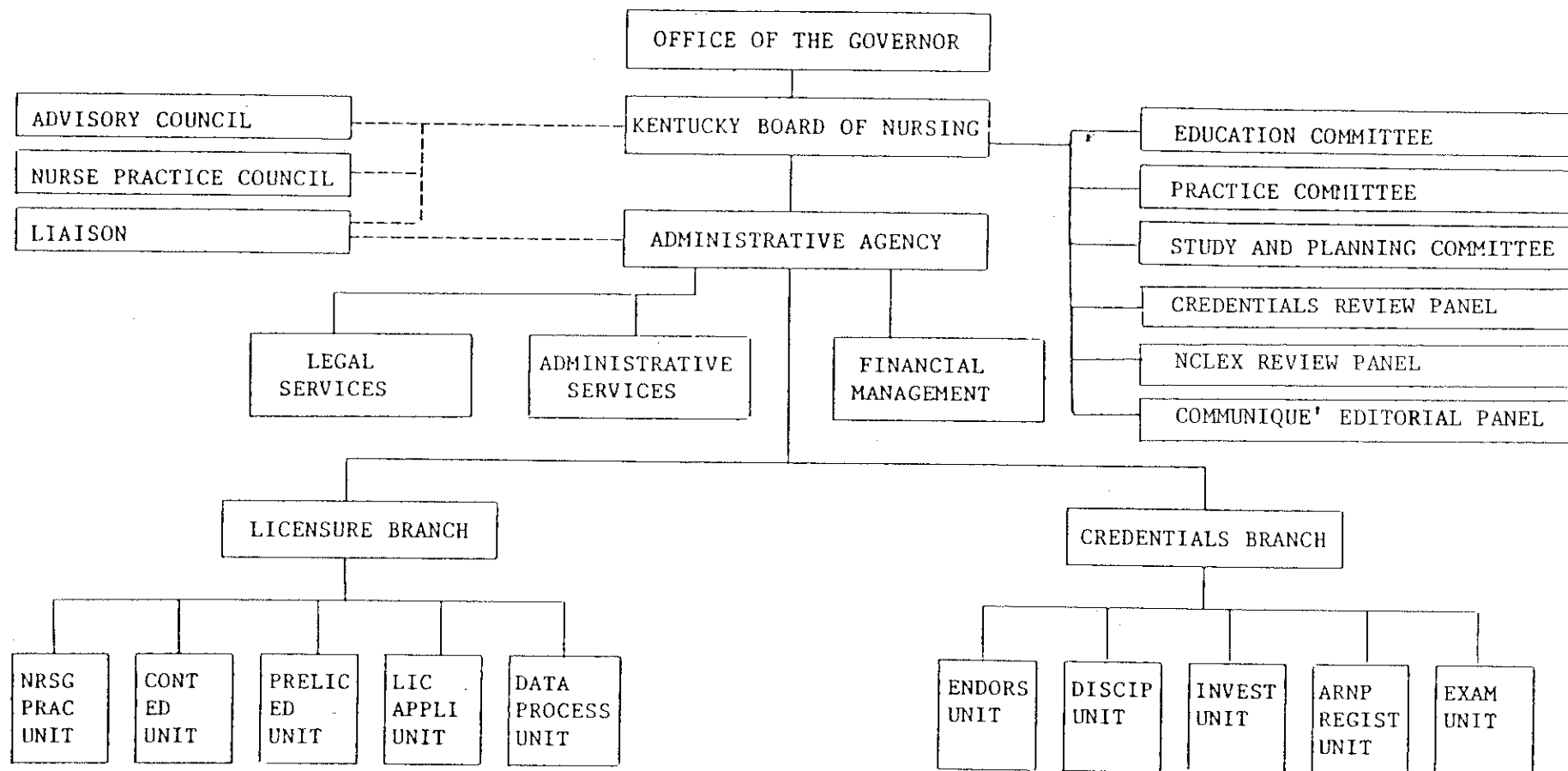


Revised: 2/90

Legend: ——— Supervisory Responsibility  
 - - - - - Resource/Assignment Responsibility  
 \* Vacant

ORGANIZATION CHART  
OF PROGRAMS

REGULATION OF NURSES AND NURSING EDUCATION AND PRACTICE



Legend: ————— Direct Relationship  
 - - - - - Advisory Relationship

STATE GOVERNMENT STRUCTURE  
 CABINET  
 DEPARTMENT  
 DIVISION  
 BRANCH  
 SECTION  
 UNIT

Revised: 2/90

Board of Nursing is placed under the  
 General Government Cabinet.

### Administrative Staff

The administrative staff of the Kentucky Board of Nursing included:

<u>Name</u>	<u>Title</u>
Sharon Weisenbeck, RN	Executive Director
Mary Romelfanger, RN	Deputy Executive Director
Alta Haunsz, RN	Credentials Director
Bernadette Sutherland, RN	Assistant Executive Director/Practice
Carol McGuire, RN	Assistant Executive Director/Education
M. Pamela Troutman, RN	Credentials Consultant
Constance Lusher, RN	Credentials Consultant
William Shouse, JD	General Counsel (Resigned 12/89)
Nathan Goldman, JD	General Counsel (Appt. 4/90)
Dolores Kopp	Office Coordinator
Cheryl Weixler	Credentials Clerk
Grace Scott	CE/Licensure Coordinator
Pamela Wells	Credentials Administrative Secretary
Beverly Owen	Data Control Supervisor
R. Scott Bailey	Computer Operations Specialist
Mary Yates	Credentials Supervisor
Sharon Schickinger	Word Processor Operator
Betty Buckman	Licensure Clerk
Susan Burress	Accountant (Resigned 11/89)
Cynthia Marlow	Credentials Clerk
Maria Wheat	Executive Secretary
L. Alethea Taylor	Education and Practice Units Secretary
Sharon Minniefield	Administrative Clerk
Virginia Burckle	Receptionist
Darlene Chilton	Licensure Branch Secretary
Carol Minter	Licensure Clerk (On Leave 5/90)
Victor York	Data Entry Operator
Rosemary Smith	Accountant (Appt. 1/90)
M. Lou Yates	Licensure Clerk (Seasonal-Appt. 6/90)
Julia Schlie	Licensure Clerk (Temporary)

### State Government Advisors

During the past year, the work of the Board and staff continued to be enhanced by the expertise of state government personnel who served in advisory and assisting capacities. They included:

Martin Glazer, Assistant Attorney General

Greg Holmes, Assistant Attorney General

Bob Babbage, Auditor of Public Accounts

Susan Harding Wunderlich, Regulations Compiler, Legislative Research Commission

Gregory Karambellas, Legislative Analyst, Legislative Research Commission

Thomas Greenwell, Commissioner, Department of Personnel

Chalmer Vineyard, Director, Classification and Compensation, Department of Personnel

Jeanette Dade, Analyst, Department of Personnel

Peggy Brady, Analyst, Department of Personnel

Klara Harris, Payroll Assistance, Department of Personnel

Beth Brinly, Policy Advisor, Governor's Office for Policy and Management

Edgar Ross, Director of Accounts, Finance and Administration Cabinet

Roy Clifton, Buyer, Finance and Administration Cabinet

Reid Moore, Buyer, Finance and Administration Cabinet

Diana Moses, Department of Library and Archives

Kathy Gilliland, Department of Library and Archives

Stephen Dooley, Commissioner, Department of Information Systems

Maria Bush, Agency Consultant, Department of Information Systems

Barbara Carr, Financial and Investment Program Specialist, Office of Investment and Debt Management

# Financial Report

Balance Forwarded July 1, 1989 \$1,043,439.33

## Receipts:

Program	\$ 809,402.27
Interest Income	70,944.24

Total \$ 880,346.51

Total Operating Fund \$1,923,785.84

Object Expenditures:	Budget	Actual
Personnel/Professional Contracts	\$ 765,200.00	\$ 771,742.56
Operating Expenses	247,360.00	240,785.95
Capital Outlay	21,140.00	21,351.81
Total	\$1,033,700.00	\$1,033,880.32

Available Balance June 30, 1990 \$ 889,905.52

## Fee Schedule

<u>Application Fees:</u>	<u>RN</u>	<u>LPN</u>
Endorsement	\$60	\$60
Reinstatement	60	60
Active License Renewal*	35	35
Inactive License Renewal*	25	25
Examination		
Licensure	60	60
Administration	35	15
ARNP Registration	60	
ARNP Reinstatement	60	
ARNP Renewal*	35	
Duplicate License Letter	10	10
Verification to Other States	15	15

## Continuing Education Approval Fees:

Initial Provider Approval	\$100
Reinstatement of Provider Approval	100
Renewal of Provider Approval*	50
Offering Approval Via Staff Review	35
Program Approval Via Staff Review	100

\*Issued for a two-year period.

## PART II

### BOARD OF NURSING INVOLVEMENTS AND LEADERSHIP ACTIVITIES

In retrospect, legislative proposals of the 1990 General Assembly contained basically nothing new or surprising. Underlying issues prompting the legislation were anticipated as were the processes used for passing or defeating the various pieces of legislation. Legislatively, public protection was augmented by the passage of several bills. Most notable of these changes that affected nursing laws were the revisions to Kentucky Revised Statutes Chapter 314, which established the Kentucky Nursing Incentive Scholarship Fund, mandatory Acquired Immunodeficiency Syndrome (AIDS) education for health care providers including nurses, and death pronouncement by nurses in hospice care. The nursing scholarship program is to be funded primarily by an additional five dollar fee for the renewal of licenses of nurses, and by fines collected by the Cabinet for Human Resources as penalties for violation of the licensing requirements for health care facilities. Also, awards made from this fund program to be administered by the Board of Nursing, will be matched by a sponsoring health care facility. The mandatory AIDS education requirement will be set by the Board of Nursing and appropriate health licensing boards for other licensees working in the health care field.

Proposed legislation on nurse/patient ratios and patient abandonment was defeated, however, these issues will no doubt resurface in 1992. The latter is currently under study by the Board. The enactment of legislation setting faculty qualifications for associate degree nursing programs at the basic registered nurse level for eighty percent of faculty in a given program changed the current masters of nursing requirement for such faculty. The establishment of a new health care worker called the mid-level health care practitioner (MLP) and the licensure of respiratory therapists created two new regulatory health care provider boards. The defeat of legislation on prescription privileges for advanced registered nurse practitioners set out work to be done in preparation for the 1992 session of the General Assembly.

On the administrative regulatory side of legislative activities, pharmacy regulations, medical regulatory issues, i.e. paramedics and emergency medical technicians, and proposed regulatory changes regarding the use of medication nurse aides were studied and discussed as they affected nursing regulation and practice. Another addition to this mix of issues was the registered care technologist proposal of the American Medical Association, which was planned for implementation in a nursing home facility in Louisville. (The latter proposal was subsequently abandoned.) The use of assistive personnel as an overriding issue continues, and though resolution of these issues seem slow, there is progress. Maintaining the integrity of the regulation of nursing continues to be a concern, however, other relevant groups have demonstrated an increasing recognition of existence and need for input from the regulatory body charged with the regulation of nursing in the Commonwealth.

Recent federal mandates affecting nursing regulation included the national practitioner data bank (1986 and 1988) and the training and evaluation of nurse aides (1987 and 1989). It can be expected that federal mandates will



increasingly involve the regulation of nursing. Thus, it is incumbent upon nursing groups to be prepared to respond proactively and to continue to enhance communication with the various groups involved.

The establishment of the Governor's Interdisciplinary Task Force on Nursing in 1988 signaled an unprecedented effort. Representatives from the Board of Nursing participated in the intense work of this Task Force from which emanated a report with recommendations for both short and long-term resolution of nursing issues in the Commonwealth. Implementation of these recommendations has been spearheaded by a newly formed group called the Kentucky Commission on Availability of Nurses (KCAN). Productive results are anticipated from such cooperative efforts by KCAN, which includes in its membership representatives from numerous groups interested in the delivery of safe and effective health care.

Development work on the proposal for a statewide demonstration project using a case management and differentiated nursing practice model was finalized. A proposal for funding this project, known as the Kentucky Nursing Practice Project, was submitted to the U.S. Department of Health and Human Services in October 1989. During the coming year, information on the funding status of the project is expected.

KBN members and staff actively participated in the National Council of State Boards of Nursing. A resolution submitted by KBN to study the administration of a third regularly scheduled examination for NCLEX-RN/PN annually was adopted by the 1989 NCSBN Delegate Assembly. The results of this NCSBN study will be presented for consideration by the 1990 Delegate Assembly. In addition, licensure examinations administered to candidates were reviewed by the Board and comments were forwarded to the National Council. These efforts, along with other Board member and staff involvements in NCSBN activities, have provided a strong voice from Kentucky at the national level.

Communications on Board actions were enhanced by providing a Summary of Major Actions within two weeks of each meeting held by the Board. Though the minutes of the meetings have been and continue to be widely distributed, the Summary disseminates information in a more timely manner.

Of critical concern to nurses, officials in the public and private sectors, and employers of nurses, is the persistent shortage of a supply of nurses to meet demand. In addition to the ever increasing demand for nursing services, the shortage of nurses has been aggravated by decreased enrollments and graduations the past several years. This past year's data indicate a reverse in the trend regarding nursing student enrollments and graduations.

Prelicensure programs of registered nursing in Kentucky reported an 81% increase in 1988-89 admissions over those in 1987-88; a 34% increase in admissions was reported by practical nursing programs. There was a 4% increase in first-time writers for NCLEX-RN from fiscal year 1988-89 to 1989-90. The 7% increase in the number of NCLEX-RN first-time writers projected for the July 1990 registered nurse examination in comparison with the July 1989 examination is encouraging. Also, there was a 13% increase in NCLEX-PN first-time writers for 1989-90 in comparison with 1988-89.

The Board continued cooperation with local, state and national organizations involved with health data collection for nursing manpower needs. Also, data were released to the National Council of State Boards of Nursing on nurse licensure and disciplinary actions taken by the Board.

Members and staff of the Board of Nursing actively participated in various local, state and national groups during the 1989-90 year. Representation to the following groups was continued: Kentucky Council of Associate Degree Nursing, Kentucky Nurses Association Board of Directors, KNA Cabinet on Nursing Education, KNA Cabinet on Practice, KNA Cabinet on Continuing Education, Kentucky State Association of Licensed Practical Nurses, Kentucky Nursing Continuing Education Network, Advisory Committee of Nurses Assisting Nurses (NAN). In addition, individuals from the Board and staff served on the National Council of State Boards of Nursing Administration of Examination Committee and Nurse Information System Committee, as members of the Health Fraud Task Force of the Office of the Attorney General in Kentucky, as members of the Clearinghouse on Licensure Enforcement and Regulation (CLEAR) committees, as a member of Kentucky Champions Against Drugs Statewide Action Group of the Office of the Governor, and as members of the Nurse Aide Training Advisory Committee of the Cabinet for Human Resources. (See complete listing on next pages.)

To facilitate communication among all groups with whom the Board interacts, a fifth annual two-day conference was held for nursing service administrators, administrators of prelicensure programs of nursing, and administrators of continuing education providerships. The theme of the conference was "Strategies for Moving into the Future". Approximately 350 individuals attended the conference activities and provided evaluations for planning other conferences as well as actively participating in the conference programs.

Kentucky Board of Nursing  
Appointed Representatives

KENTUCKY NURSING CONTINUING EDUCATION NETWORK

Susan Jones, RN

KENTUCKY COUNCIL OF ASSOCIATE DEGREE NURSING

Carol McGuire, RN

KENTUCKY NURSES ASSOCIATION

Board of Directors - Virginia Jenkins, RN  
Cabinet on Continuing Education - Carol McGuire, RN  
Cabinet on Nursing Education - Susan Jones, RN  
Cabinet on Nursing Practice - Bernadette Sutherland, RN

KENTUCKY COALITION ON AVAILABILITY OF NURSES

Mary Romelfanger, RN

KENTUCKY STATE ASSOCIATION OF LICENSED PRACTICAL NURSES

Janice Oster, LPN

KENTUCKY MEDICAL LICENSURE BOARD PHYSICIAN ASSISTANT ADVISORY COMMITTEE

Ellen Bailey, ARNP

NATIONAL COUNCIL OF STATE BOARDS OF NURSING - MEMBER BOARD

Delegate Representative - Virginia Jenkins, RN  
Delegate Representative - Sharon Weisenbeck, RN  
Alternate Delegate Representative - Angela Lasley, RN  
Alternate Delegate Representative - Mary Romelfanger, RN

NATIONAL COUNCIL OF STATE BOARDS OF NURSING

NCSBN Nurse Aide Competency Evaluation Program Committee -  
Sharon Weisenbeck, RN, Chairperson  
NCSBN Examination Committee - Mauhee Edmondson, RN  
NCSBN Administration of Examination Committee - Alta Haunsz, RN

NURSES ASSISTING NURSES (NAN)

Advisory Committee - Wilma Jones, RN; Connie Lusher, RN; M. Pamela Troutman, RN

OFFICE OF THE ATTORNEY GENERAL

Health Fraud Task Force - Bernadette Sutherland, RN

OFFICE OF THE GOVERNOR

Champions Against Drugs Statewide Action Group - Sharon Weisenbeck, RN

CABINET FOR HUMAN RESOURCES

Nurse Aide Training Advisory Committee - Sharon Weisenbeck, RN; Carol McGuire, RN

KBN Appointed Representatives Continued

CLEARINGHOUSE ON Licensure ENFORCEMENT AND REGULATION (CLEAR)

Clearinghouse on Licensure Enforcement and Regulation (CLEAR), Council of  
State Governments, Steering Committee - Mary Romelfanger, RN

CLEAR, Council of State Governments, Site Selection Committee - Mary  
Romelfanger, RN

CLEAR, Council of State Governments, National Certified Investigator Training  
Advisory Committee - Alta Haunsz, RN

CLEAR, Council of State Governments, Administration and Management Information  
Sub-Committee - Alta Haunsz, RN

COMMISSION ON GRADUATES OF FOREIGN NURSING SCHOOLS

Credentials Committee - Sharon Weisenbeck, RN

## PART III

### BOARD ADMINISTRATIVE PROGRAMS

#### Introduction

The programmatic functions of the Board of Nursing, though remaining constant, grew in volume and complexities. The shortage of nurses has precipitated a need to expedite regulatory processes in an effort to conserve scarce manpower resources while at the same time maintaining standards to assure safe and effective care. A review of all regulatory procedures currently in effect was continued with the objective to both facilitate and enhance sound regulatory practices.

A post-renewal audit to determine licensee compliance with continuing education earning requirements was implemented following both the 1987 and 1989 LPN licensure renewal periods and the 1988 RN licensure renewal period. There was a range of 0.5 to 5.5% for each audit population who failed to meet continuing education earning requirements that necessitated disciplinary action by the Board.

Ten (10) on-site survey visits of prelicensure programs of nursing were conducted. One (1) new practical nursing and three (3) new associate degree nursing programs were approved. There are currently 49 educational institutions which operate a total of 11 BSN, 23 ADN, and 22 LPN prelicensure programs of nursing in the Commonwealth. In addition, one (1) application to establish an associate degree extension program was accepted.

In response to inquiries requesting interpretation of the legal scope of nursing practice, the Board has published a total of twenty-three (23) advisory opinion statements as guidelines for safe practice. During 1989-90, the Board approved Advisory Opinion Statements as follow: "Roles of Nurses in Dialysis" (AOS 90-21), "Roles of Nurses Who Provide 'Private Duty' Nursing" (AOS 90-22), and "The Application and Removal of a Cast or Splint by Nurses" (AOS 90-23). In addition, revisions were adopted in Advisory Opinion Statements as follows: "The Performance of Advanced Life Support Procedures by Registered Nurses" (AOS 84-05), and "Roles of Nurses in the Administration of Medications via Various Routes" (AOS 87-16). In December 1989, the advisory opinion statement on "Roles of Nurses in Intravenous Therapy" (AOS 83/89B-03) was revised, and concurrently, Standards for a Kentucky Board of Nursing Approved Post-Licensure Basic Intravenous Therapy Course for Licensed Practical Nurses were approved. This fiscal year, the Board has studied and issued individual advisory opinions on twenty-one (21) specific nursing practice issues.

A major issue facing the Board of Nursing revolves around the processing of complaints against nurses who are impaired by chemical use and/or stress. A panel consisting of nurses and counselors was convened by the Board in November 1989 to provide information on various problems faced by nurses throughout the disciplinary process and on return to the workplace. The Board is considering the development of a survey tool to send to nurses who have had disciplinary

action taken on their licenses. The purpose is to collect data that will assist the Board in making decisions regarding disciplinary action in cases involving impaired nurses.

The investigation and disciplinary action program of the Board continued to grow during the past year. There was a slight increase in the number of complaints received and processed. The number of nurses monitored by the Board increased by 20%. The Credentials Review Panel, by considering and making recommendations regarding cases which fall outside precedent, has continued to assist in the processing of complaints in a timely manner.

Significant issues are facing the profession of nursing with attendant implications for the regulation of nurses. The members and staff of the Board of Nursing look forward to continued cooperative efforts for resolution of the issues to ensure safe practice of nursing for the citizens of the Commonwealth. Again, the Board and staff members are appreciative of the many individuals and groups whose interest, cooperation, and support assist the Board in achieving sound regulatory practices in the interest of public protection.

Kentucky Administrative Regulations

During fiscal year 1989-90, administrative regulation activity initiated by the Board, reviewed by the Advisory Council and approved by the Legislative Research Commission included one revised regulation.

<u>Number and Title</u>	<u>Regulation</u>	<u>Effective Date</u>
201 KAR 20:056.	Advanced registered nurse practitioner registration.	4-17-86
201 KAR 20:057.	Scope and standards of practice of advanced registered nurse practitioners.	9-8-87
201 KAR 20:070.	Licensure by examination.	11-6-87
201 KAR 20:085.	Licensure periods.	6-4-85
201 KAR 20:090.	Temporary work permit.	11-6-87
201 KAR 20:095.	Inactive nurse licensure status.	3-10-88
201 KAR 20:110.	Licensure by endorsement.	3-10-88
201 KAR 20:115.	Limited licensure.	11-6-87
201 KAR 20:161.	Investigation & disposition of complaints.	10-14-88
201 KAR 20:162.	Procedures for disciplinary hearings pursuant to KRS 314.091.	11-6-87
201 KAR 20:200.	Definitions for mandatory continuing education.	6-4-85
201 KAR 20:205.	Standards for continuing education offerings.	11-6-87
201 KAR 20:210.	Standards for a program of continuing education.	11-6-87
201 KAR 20:215.	Contact hours.	8-5-88
201 KAR 20:220.	Provider approval.	11-6-87
201 KAR 20:225.	Reinstatement of license.	3-10-88
201 KAR 20:230.	Renewal of licenses.	11-6-87
201 KAR 20:240.	Fees for applications and for services.	11-6-87
201 KAR 20:250.	Definitions for registered and practical nurse prelicensure programs of nursing.	6-4-85
201 KAR 20:260.	Organization and administration standards for prelicensure programs of nursing.	6-4-85
201 KAR 20:270.	Programs of nursing surveys.	11-6-87
201 KAR 20:280.	Standards for prelicensure registered nurse and practical nurse programs.	6-4-85
201 KAR 20:290.	Standards for prelicensure registered nurse and practical nurse extension programs.	11-6-87
201 KAR 20:300.	Standards for prelicensure experimental programs of nursing.	6-4-85
201 KAR 20:310.	Faculty for prelicensure registered nurse and practical nurse programs.	3-8-90
201 KAR 20:320.	Standards for curriculum of prelicensure registered nurse programs.	11-6-87
201 KAR 20:330.	Standards for curriculum of prelicensure practical nurse programs.	3-10-89
201 KAR 20:340.	Students in prelicensure registered nurse and practical nurse programs.	6-4-85

Kentucky Administrative Regulations Continued

<u>Number and Title</u>	<u>Regulation</u>	<u>Effective Date</u>
201 KAR 20:350.	Education facilities and resources for prelicensure registered nurse and practical nurse programs.	6-4-85
201 KAR 20:360.	Evaluation of prelicensure registered nurse and practical nurse programs.	11-6-87
201 KAR 20:370.	Applications for licensure and registration.	11-6-87
201 KAR 20:380.	Standards for refresher course approval.	11-6-87



### Nursing Education

The Kentucky Board of Nursing is the legally authorized body in Kentucky to approve programs of nursing preparing persons for eligibility for licensure as nurses. Through the provisions of the Kentucky Nursing Practice Act, (KRS 314.011, 314.031, 314.111 and 314.131), the Board prescribes standards for schools of nursing preparing candidates for licensure as nurses. It provides for survey visits and other methods of determining program compliance with statutory and regulatory provisions. Consultation to nursing education programs was provided by the staff and members of the Board.

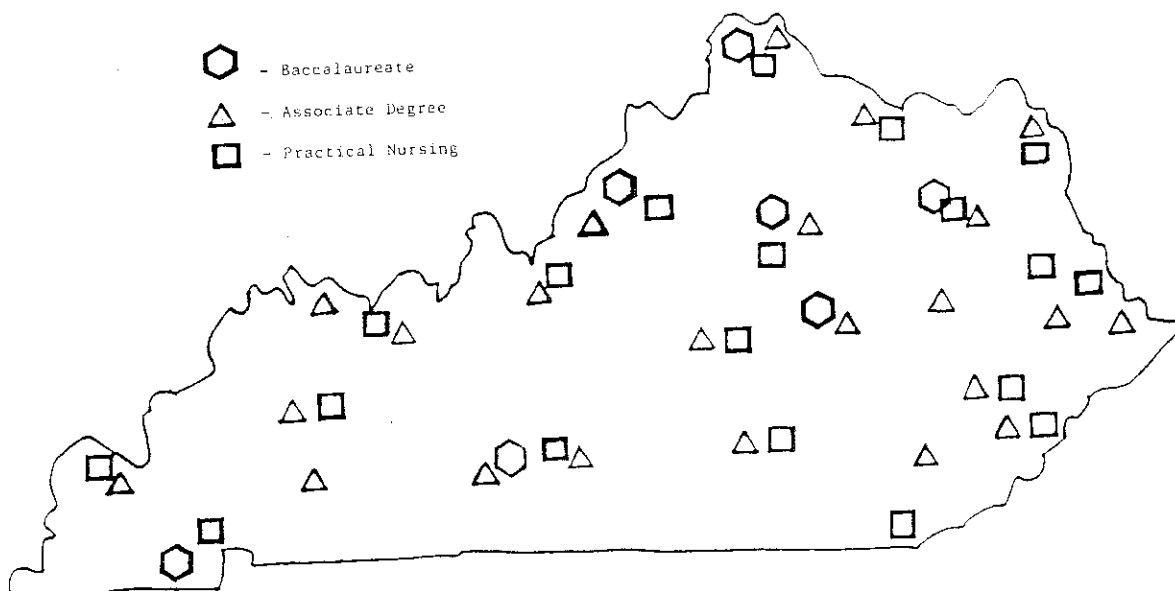
Monitoring of the nursing education programs' compliance with Board regulations and guidelines was accomplished through the review of Annual Reports and Annual Faculty Summaries submitted by all nursing education programs preparing individuals for licensure as registered or licensed practical nurses. Ten (10) program visit reports were acted on by the Board. Reports submitted by various nursing education programs to show evidence of compliance with requirements, were also considered by the Board. Nursing education programs determined to be out of compliance with regulations of the Board were required to study and analyze the areas of noncompliance and to implement plans for corrective action.

During the past year, approval was granted to three (3) new associate degree nursing programs and one (1) practical nursing program. The new associate degree nursing programs are located at Lees College, Jackson; Corbin Extension of Lincoln Memorial University; and Danville Extension of Midway College. An Elizabethtown Extension of the Practical Nursing Program of the Glasgow School for Health Occupations admitted students in the Spring of 1990.

An application to establish an Owensboro Extension of the Associate Degree Nursing program, Henderson Community College was accepted by the Board.

As of June 30, 1990, there were forty-nine (49) educational institutions which operate eleven (11) generic baccalaureate, twenty-three (23) associate degree and twenty-two (22) practical nursing programs. Refer to Exhibit 1 for current distribution of programs of nursing by type.

EXHIBIT 1  
GEOGRAPHIC DISTRIBUTION OF KENTUCKY  
PROGRAMS OF NURSING  
BY TYPE



List of Prelicensure Nursing Education Programs

Baccalaureate Degree Nursing Programs (10 + 1 Extension Program)

Bellarmino College, Louisville  
Berea College, Berea  
Eastern Kentucky University, Richmond  
Morehead State University, Morehead  
Murray State University, Murray  
Spalding College, Louisville  
Thomas More College, Crestview Hills with Extension Program, Providence  
Hospital, Cincinnati, Ohio  
Western Kentucky University, Bowling Green  
University of Kentucky, Lexington  
University of Louisville, Louisville

Associate Degree Nursing Programs (21 + 2 Extension Programs)

Ashland Community College, Ashland  
Eastern Kentucky University, Richmond  
Elizabethtown Community College, Elizabethtown  
Hazard Community College, Hazard  
Henderson Community College, Henderson  
Jefferson Community College, Louisville  
Kentucky State University, Frankfort  
Kentucky Wesleyan College, Owensboro  
Lees College, Jackson  
Lexington Community College, Lexington  
Lincoln Memorial University Extension to Corbin  
Maysville Community College, Maysville  
Midway Community College, Midway with Extension Program, Danville  
Northern Kentucky University, Highland Heights  
Paducah Community College, Paducah  
Pennyrile Regional Program, Hopkinsville and Madisonville  
Pikeville College, Pikeville  
Prestonsburg Community College, Prestonsburg  
Somerset Community College, Somerset  
Southeast Community College, Cumberland  
Western Kentucky University, Bowling Green with Extension Program, Glasgow

Practical Nursing Programs (18 + 4 Extension Programs)

Ashland State Vocational-Technical School, Ashland  
Central Kentucky State Vocational-Technical School, Lexington  
Cumberland Valley Health Occupations Center, Pineville  
Danville School of Health Occupations, Danville  
Glasgow School for Health Occupations, Glasgow with Extension Program, Elizabethtown  
Hazard State Vocational-Technical School, Hazard with Extension Program, Whitesburg  
Humana Health Institutes, Inc.-Louisville  
Jefferson State Vocational-Technical School, Louisville  
Madisonville Health Occupations School, Madisonville  
Mayo State Vocational-Technical School, Paintsville with Extension Program, Pikeville  
Murray Area Vocational Educational Center, Murray  
Northern Kentucky Health Occupations Center, Edgewood  
Owensboro State Vocational-Technical School, Owensboro  
Rowan State Vocational-Technical School, Morehead with Extension Program, Maysville  
Somerset State Vocational-Technical School, Somerset  
Spencerian College, Louisville  
West Kentucky State Vocational-Technical School, Paducah  
Wm. Booth School, Florence

TABLE 1  
PRELICENSURE PROGRAMS OF NURSING  
GRADUATES BY TYPE OF PROGRAM  
1989-1990

<u>Program Type</u>	<u>Number Students Graduated</u>
<u>Baccalaureate Degree Programs</u>	
Bellarmino College	34
Berea College	21
Eastern Kentucky University	51
Morehead State University	14
Murray State University	28
Spalding University	39
Thomas More College	6
University of Kentucky	72
University of Louisville	83
Total Baccalaureate Graduates*	348
<u>Associate Degree Programs</u>	
Ashland Community College	61
Eastern Kentucky University	79
Elizabethtown Community College	44
Hazard Community College	31
Henderson Community College	43
Jefferson Community College	90
Kentucky State University	29
Kentucky Wesleyan College	20
Lexington Community College	57
Maysville Community College	29
Midway College	31
Northern Kentucky University	70
Paducah Community College	59
Pennyrile Regional	70
Pikeville College	18
Prestonsburg Community College	26
Somerset Community College	33
Southeast Community College	22
Western Kentucky University	94
Total Associate Degree Graduates*	906
Total Graduates from RN Programs	1254

\*This number varies from the number of candidates taking the examination. Graduation date and licensure examination date may not be in the same fiscal year.

TABLE 1 Continued  
PRELICENSURE PROGRAMS OF NURSING  
GRADUATES BY TYPE OF PROGRAM  
1989-1990

<u>Program Type</u>	<u>Number Students Graduated</u>
<u>Practical Nurse Programs</u>	
Ashland Area Vocational School	34
Central Kentucky State Vocational School	42
Cumberland Valley Health Occupations Center	30
Danville School of Health Occupations	61
Glasgow School for Health Occupations	44
Hazard State Vocational-Technical School	48
Jefferson State Vocational-Technical School	49
Madisonville Health Occupations School	53
Mayo State Vocational-Technical School	48
Murray Area Vocational Education Center	31
Northern Kentucky Health Occupations Center	53
Owensboro State Vocational-Technical School	42
Rowan State Vocational-Technical School	37
Somerset State Vocational-Technical School	26
Spencerian College	55
West Kentucky State Vocational-Technical School	32
William Booth School of PN Education	<u>32</u>
Total Graduates from PN Programs*	717
Total Graduates from Kentucky Programs	1971

\* This number varies from the number of candidates taking the examination. Graduation date and licensure examination date may not be in the same fiscal year.

# KY PRELICENSURE PROGRAM GRADUATES 83-90

TABLE-2

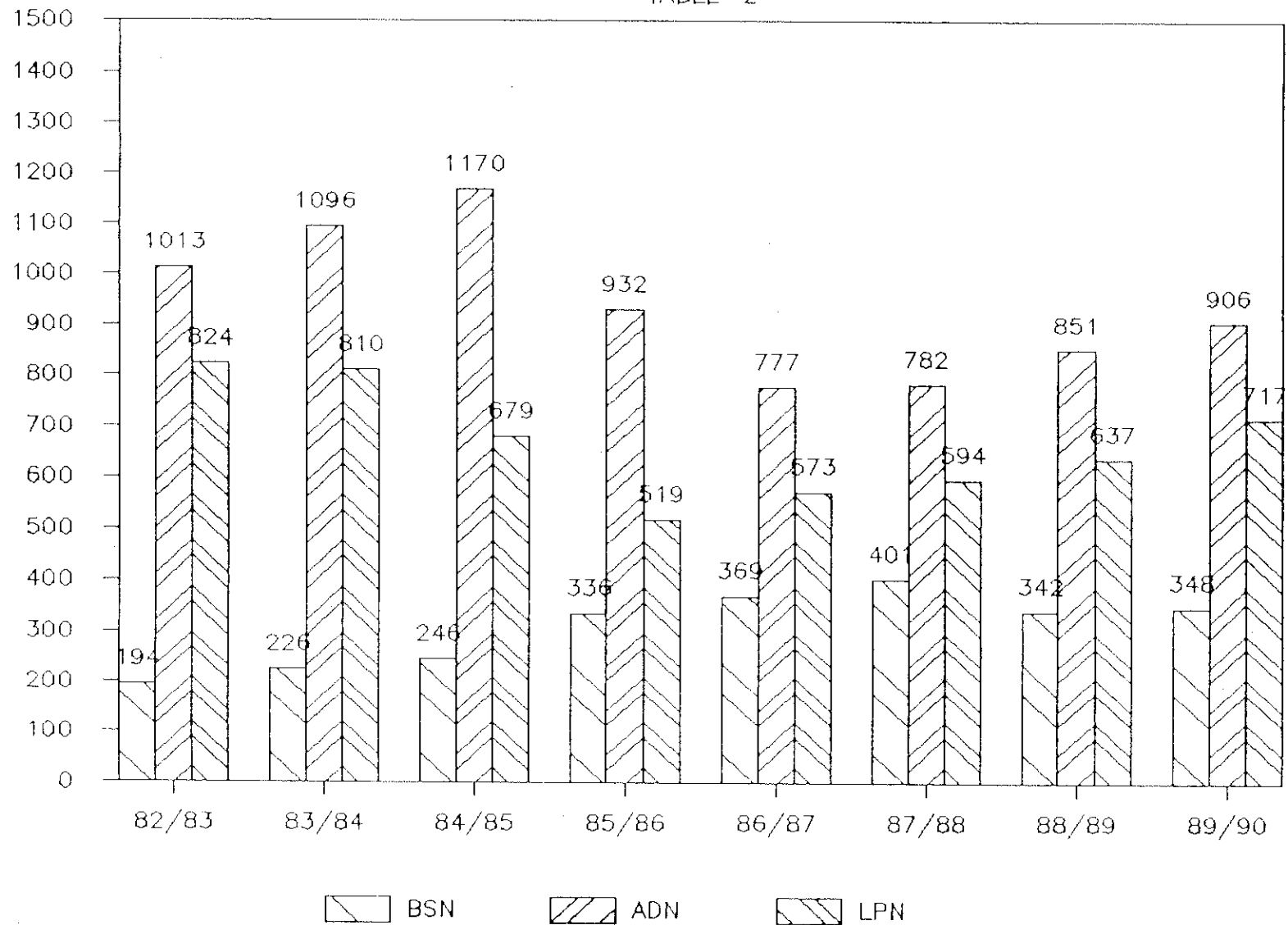


TABLE 2a  
COMPARATIVE DATA: KENTUCKY PRELICENSURE  
PROGRAM GRADUATES BY PROGRAM TYPE  
FISCAL YEARS 1984-1990

PROGRAM TYPE	YEAR: <u>83/84</u>	<u>84/85</u>	<u>85/86</u>	<u>86/87</u>	<u>87/88</u>	<u>88/89</u>	<u>89/90</u>
BSN	226 (+32) 16%	246 (+20) 9%	336 (+90) 37%	369 (+33) 10%	401 (+32) 8%	342 (-59) 15%	348 (+ 6) 2%
ADN	1096 (+83) 8%	1170 (+74) 7%	932 (-238) 20%	777 (-155) 16%	782 (+ 5) 1%	851 (+69) 9%	906 (+55) 6%
DIPLOMA	<u>43</u>	<u>--</u>	<u>--</u>	<u>--</u>	<u>--</u>	<u>--</u>	<u>--</u>
RN TOTAL	1365* (+52) 4%	1416 (+51) 4%	1268 (-148) 10%	1146 (-140) 11%	1183 (+37) 3%	1193 (+10) 1%	1254 (+61) 5%
LPN TOTAL	<u>810 (-14) 2%</u>	<u>679 (-131) 16%</u>	<u>519 (-160) 24%</u>	<u>574 (+55) 11%</u>	<u>594 (+20) 3%</u>	<u>637 (+43) 7%</u>	<u>717 (+80) 11%</u>
RN & LPN TOTAL	2175 (+38) 2%	2095 (-80) 4%	1787 (-308) 15%	1720 (-67) 4%	1777 (+57) 3%	1830 (+53) 3%	1971 (+141) 7%

\* Total Includes Diploma Program Graduates: 83/84(43)

\*\* All percentages rounded

SOURCE: Kentucky Board of Nursing Approved Prelicensure Nursing Programs Annual Reports FY 84-90

TABLE 3  
PRELICENSURE PROGRAMS OF NURSING: YEAR ESTABLISHED AND NUMBER  
OF STUDENTS GRADUATED 1986-1990

NURSING PROGRAM - BSM	Year First Class Admitted	NUMBER OF GRADUATES				
		1985-86	1986-87	1987-88	1988-89	1989-90
Bellarmino College	1985	Opened	--	27	32	34
Berea College	1956	17	18	26	14	21
Eastern Kentucky University	1971	84	90	83	49	51
Morehead State University	1987		Opened	--	--	14
Murray State University	1964	49	48	42	28	28
Spalding University	1948	58	46	54	40	39
Thomas More College	1978	20	15	14	10	06
University of Kentucky	1960	59	106	86	87	72
University of Louisville	1983	49	46	69	82	83
Western Kentucky University	1989	---	---	---	---	Opened
Total Graduates (BSN)		336	369	401	342	348
NURSING PROGRAM - ADM						
Ashland Community College	1975	59	51	51	41	61
Bellarmino College	1983	66	Closed	--	--	--
Eastern Kentucky University	1965	90	69	58	74	79
Elizabethtown Community College	1965	46	31	34	49	44
Hazard Community College	1989*				35	31
Henderson Community College	1963	33	22	44	39	43
Jefferson Community College	1967	78	83	71	86	90
Kentucky State University	1968	48	45	43	37	29
Kentucky Wesleyan College	1977	30	19	23	20	20
Lexington Community College	1965	53	69	46	57	57
Lincoln Memorial University						
Corbin, Kentucky Extension	1990	---	---	---	---	Opened
Maysville Community College	1972	19	17	23	23	29
Midway College	1967	28	35	35	29	31
Morehead State University	1971	22	4	Closed	--	--
Northern Ky. State University	1964	62	58	56	70	70
Paducah Community College	1964	50	48	49	59	59
Pennyrile Regional	1970	39	31	53	53	70

\*Formerly Extension of Southeast Community College

TABLE 3 Continued  
 PRELICENSURE PROGRAMS OF NURSING: YEAR ESTABLISHED AND NUMBER  
 OF STUDENTS GRADUATED 1986-1990

NURSING PROGRAM - ADM Cont'd	Year First Class Admitted	NUMBER OF GRADUATES				
		1985-86	1986-87	1987-88	1988-89	1989-90
Pikeville College	1983	11	19	9	18	18
Prestonsburg Community College	1973	32	26	25	27	26
Somerset Community College	1969	33	23	32	29	33
Southeast Community College	1978	50	46	54	14	22
Western Ky. University	1964	83	81	76	91	94
Total Graduates (ADN)		932	777	782	851	906
NURSING PROGRAM - PN						
Ashland State Voc.-Tech. School	1967	57	32	27	21	34
Central Ky. State Voc-Tech School	1951	24	16	40	43	42
Cumberland Valley Health Occupations Ctr	1961	17	42	37	27	30
Danville School of Health Occupations	1955	52	41	48	81	61
Glasgow School for Health Occupations	1957	38	39	29	53	44
Hazard State Voc.-Tech. School	1964	27	38	53	55	48
Humana Health Institute - Louisville	1990	---	---	---	---	Opened
Jefferson State Voc.-Tech. School	1957	41	60	37	41	49
Madisonville Health Occupations School	1965	35	38	35	45	53
Mayo State Voc.-Tech. School	1955	47	47	49	22	48
Murray Area Voc. Ed. Center	1967	13	19	14	19	31
Northern Ky. Health Occupations Center	1962	28	70	49	55	53
Owensboro State Voc.-Tech. School	1960	21	0	20	26	42
Rowan State Voc.-Tech. School	1985	17	32	36	42	37
Somerset State Voc.-Tech. School	1981	26	28	30	26	26
Spencerian College	1978	12	20	29	23	55
West Ky. State Voc-Tech School	1971	24	31	27	30	32
Wm. Booth School of PN Education	1959	40	20	34	28	32
Total Graduates (RN)		1268	1146	1183	1193	1254
Total Graduates (PN)		519	573	594	637	717
TOTAL GRADUATES		1787	1719	1777	1830	1971

Source: Annual Reports Submitted by Prelicensure Programs of Nursing 1986-1990.



### Mandatory Continuing Education

The Kentucky Board of Nursing is the Commonwealth agency legally authorized to approve providers of mandatory continuing education for nurses. In accordance with the Kentucky Nursing Practice Act (Kentucky Revised Statutes 314.073), the Board prescribes standards for both the providers of continuing education and for continuing education offerings/programs.

The approval of providers of continuing education was initiated in 1981 to assure that continuing education offerings approved by the Board would be both available and accessible for nurses who were required to meet contact hour earnings for renewal of licenses for the first time in 1982. In addition to those providers who were granted continued approval during the 1989-90 year, seven new providers were approved while five providers ceased participation, and were designated as withdrawn ("WD"). At the close of the year on June 30, a total of 159 active providers of continuing education held approval by the Board. One hundred fifty-nine (159) providers were located within the Commonwealth and eight (8) were located out-of-state.

Effective June 1, 1986, the Board stopped recording the continuing education contact hours earned by individual Kentucky nurse licensees. The process for verification of continuing education earning now consists of a post-renewal audit procedure instituted following the 1987 licensed practical nurse licensure renewal, and the 1988 registered nurse licensure renewal periods. The audit is conducted on a random basis and requires that those persons selected show documented evidence (certificate of attendance, transcript, grade report, etc.) of approved contact hour earning.

TABLE 4

APPROVED PROVIDERS OF MANDATORY CONTINUING EDUCATION  
BY CATEGORY

---

CATEGORY 1

PROFESSIONAL NURSING ORGANIZATIONS (13)

CALIFORNIA

NEWPORT BEACH, American Association of Critical Care Nurses

ILLINOIS

CHICAGO, American Association of Neuroscience Nurses

PARK RIDGE, American Association of Nurse Anesthetists

KENTUCKY

HARRODSBURG, Bluegrass Chapter, AORN

LEXINGTON, Kentucky State Association of Licensed Practical Nurses

LOUISVILLE, American Association of Critical Care Nurses, Greater Louisville Chapter

Kentuckiana Association of Operating Room Nurses

Kentucky Association of Nurse Anesthetists

Kentucky Dermatology Nurses' Association

Kentucky Nurses Association

Louisville Area Association of Occupational Health Nurses

NAACOG, Kentucky Section

National Association of Orthopaedic Nurses, River Cities Chapter

CATEGORY 2

RELATED NURSING ORGANIZATIONS (2)

KENTUCKY

LEXINGTON, Emergency Nurses Association, Bluegrass Chapter

LOUISVILLE, Kentuckiana Emergency Nurses Association, Inc.

CATEGORY 3

EDUCATIONAL INSTITUTIONS (32)

KENTUCKY

ASHLAND, Ashland Community College

BEREA, Berea College

BOWLING GREEN, Western Kentucky University

CUMBERLAND, Southeast Community College

TABLE 4 Continued  
CATEGORY 3 Continued  
EDUCATIONAL INSTITUTIONS

DANVILLE, Danville School of Practical Nursing  
ELIZABETHTOWN, Elizabethtown Community College  
FRANKFORT, Kentucky State University  
GLASGOW, Glasgow School for Health Occupations  
HAZARD, Hazard Community College  
HENDERSON, Henderson Community College  
HIGHLAND HEIGHTS, Northern Kentucky University (WD)  
HOPKINSVILLE, Hopkinsville Community College  
LEXINGTON, Central Kentucky State Vocational Technical School  
Lexington Community College  
University of Kentucky, College of Nursing  
LOUISVILLE, Bellarmine College  
Jefferson Community College  
Spalding University  
University of Louisville, School of Nursing  
MADISONVILLE, Madisonville Community College  
MAYSVILLE, Maysville Community College  
MOREHEAD, Morehead State University  
MURRAY, Murray State University  
OWENSBORO, Kentucky Wesleyan College  
PADUCAH, Paducah Community College  
PAINTSVILLE, Mayo State Vocational-Technical School  
PINEVILLE, Pineville School for Practical Nurses (WD)  
RICHMOND, Eastern Kentucky University  
SOMERSET, Somerset Community College  
Somerset School of Practical Nursing

TENNESSEE

CLARKSVILLE, Austin Peay State University, Department of Nursing  
NASHVILLE, The University of Tennessee, Critical Care Center

CATEGORY 4  
HEALTH SERVICE AGENCIES (93)

KENTUCKY

ASHLAND, King's Daughters Medical Center  
Our Lady of Bellefonte Hospital  
BENTON, Marshall County Hospital  
BEREA, Berea Hospital, Inc.  
BOWLING GREEN, HCA Greenview Hospital  
Medical Center at Bowling Green  
CAMPBELLSVILLE, Taylor County Hospital  
COLUMBIA, Westlake Cumberland Hospital  
CORBIN, Baptist Regional Medical Center  
CYNTHIANA, Harrison Memorial Hospital  
DANVILLE, Ephraim McDowell Regional Medical Center  
EDGEWOOD, St. Elizabeth Medical Center  
ELIZABETHTOWN, Hardin Memorial Hospital  
FLEMINGSBURG, Fleming County Hospital  
FLORENCE, St. Luke Hospital West

TABLE 4 Continued

CATEGORY 4 Continued  
HEALTH SERVICE AGENCIES

FORT THOMAS, St. Luke Hospital East  
FRANKFORT, Kings Daughters' Hospital  
GEORGETOWN, Scott General Hospital  
GLASGOW, T.J. Samson Community Hospital  
HARLAN, Harlan Appalachian Regional Hospital  
HARTFORD, Ohio County Hospital  
HAZARD, ARH Regional Medical Center  
HENDERSON, Community Methodist Hospital  
HOPKINSVILLE, Jennie Stuart Medical Center  
                    Western State Hospital  
JENKINS, Jenkins Community Hospital  
LAGRANGE, Tri-County Community Hospital  
LEBANON, SpringView Hospital  
LEITCHFIELD, Grayson County Hospital  
LEXINGTON, Appalachian Regional Healthcare, Inc.  
                    Cardinal Hill Hospital  
                    Central Baptist Hospital  
                    Charter Ridge Hospital  
                    Eastern State Hospital  
                    Good Samaritan Hospital  
                    Humana Hospital - Lexington  
                    St. Joseph Hospital  
                    Shriners Hospital for Crippled Children  
                    University of Kentucky, University Hospital  
                    Veterans Administration Medical Center  
LONDON, Cumberland Valley District Health Department  
                    Marymount Hospital  
LOUISA, Humana Hospital Louisa  
LOUISVILLE, Baptist Hospital East  
                    Baptist Hospital Highlands (WD)  
                    Brooklawn, Inc.  
                    Central State Hospital  
                    Frazier Rehab Center  
                    Hazelwood ICF/MR  
                    Humana, Inc.  
                    Humana Hospital Audubon  
                    Humana Hospital Southwest  
                    Humana Hospital Suburban  
                    Humana Hospital University  
                    Jewish Hospital  
                    Kentucky Commission for Handicapped Children  
                    Kosair Childrens Hospital  
                    Maxicare Kentucky, Inc.  
                    Methodist Evangelical Hospital  
                    Norton Hospital  
                    Our Lady of Peace Hospital  
                    St. Anthony Medical Center  
                    SS. Mary and Elizabeth Hospital  
                    Veterans Administration Medical Center

TABLE 4 Continued

CATEGORY 4 Continued  
HEALTH SERVICE AGENCIES

MADISONVILLE, Regional Medical Center  
MARTIN, Our Lady of the Way Hospital  
MAYSVILLE, Meadowview Regional Hospital  
MIDDLESBORO, Middlesboro Appalachian Regional Hospital  
MOREHEAD, St. Claire Medical Center  
MT. STERLING, Mary Chiles Hospital  
MT. VERNON, Rockcastle County Hospital  
MURRAY, Murray-Calloway County Hospital  
OWENSBORO, Mercy Hospital  
Owensboro-Daviess County Hospital  
PADUCAH, Lourdes Hospital  
Western Baptist Hospital  
PARIS, Wedco Health Department  
PIKEVILLE, Methodist Hospital of Kentucky  
PRESTONSBURG, Highlands Regional Medical Center  
RADCLIFF, Lincoln Trail Hospital  
RICHMOND, Pattie A. Clay Hospital  
RUSSELLVILLE, Logan Memorial Hospital  
SHELBYVILLE, United Medical Center  
SOMERSET, Humana Hospital Lake Cumberland  
Lake Cumberland District Health Department  
Lake Cumberland Home Health Agency  
Lifeline Home Health Care  
Sunrise Manor  
STANFORD, Fort Logan Hospital  
WHITESBURG, Whitesburg Appalachian Regional Hospital  
WILLIAMSTOWN, Grant County Hospital  
WINCHESTER, Clark Regional Medical Center

TENNESSEE

MURFREESBORO, National HealthCorp L.P.

CATEGORY 5  
HEALTH RELATED ORGANIZATIONS (10)

KENTUCKY

ERLANGER, Northern Kentucky Division, American Cancer Society  
FRANKFORT, Kentucky Association of Health Care Facilities  
HARTFORD, APIC, West Kentucky  
LEXINGTON, Dialysis Clinic, Inc.  
Kentucky Diabetes Foundation, Inc.  
Kentucky Home Health Association  
LOUISVILLE, American Heart Association, Kentucky Affiliate  
American Red Cross, Louisville Area Chapter

TABLE 4 Continued

CATEGORY 5 Continued

HEALTH RELATED ORGANIZATIONS Continued

KENTUCKY continued

LOUISVILLE, Kentucky Association of Homes for the Aging  
Seven Counties Services, Inc.

CATEGORY 6

COMMERCIAL ORGANIZATIONS (2)

KENTUCKY

LOUISVILLE, D & R Pharmaceutical Services, Inc.  
Philip Morris Medical Department

CATEGORY 7

OTHER (11)

CALIFORNIA

SAN DIEGO, Western Schools

FLORIDA

SARASOTA, C & T Seminars (WD)

KENTUCKY

GEORGETOWN, Patricia Rice, RN (Individual Provider)  
LOUISVILLE, Carlin Institute of Weight Control and Health, Inc.  
Division of Licensing and Regulation, Region B  
Health Care Promotions  
Nurses for Christ  
MIDDLESBORO, Welch Consultants, Inc. (WD)  
MURRAY, Erwin Associates  
SOMERSET, C E Partners

MARYLAND

BALTIMORE, Resource Applications

---

(WD) Voluntary withdrawal of providership approval

## Nursing Practice

The Board interprets the legal scope of nursing practice according to Kentucky Revised Statutes Chapter 314 and Board of Nursing Administrative Regulations in the determination of safe and effective nursing care for the citizens of the Commonwealth.

In response to inquiries requesting interpretation of the legal scope of nursing practice, the Board has published and disseminated a total of twenty-three (23) advisory opinion statements as guidelines for safe practice. During 1989-90, the Board approved Advisory Opinion Statements as follow: "Roles of Nurses in Dialysis" (AOS 90-21), "Roles of Nurses Who Provide 'Private Duty' Nursing" (AOS 90-22), and "The Application and Removal of a Cast or Splint by Nurses" (AOS 90-23). Revisions were adopted in Advisory Opinion Statements as follows: "The Performance of Advanced Life Support Procedures by Registered Nurses" (AOS 84-05), and "Roles of Nurses in the Administration of Medications via Various Routes" (AOS 87-16). In December 1989, the advisory opinion statement on "Roles of Nurses in Intravenous Therapy" (AOS 83/89B-03) was revised and concurrently, Standards for a Kentucky Board of Nursing Approved Post-Licensure Basic Intravenous Therapy Course for Licensed Practical Nurses were approved.

In addition, responses to twenty-one (21) letters requesting opinions on various nursing practice issues were handled through the work of the Practice Committee.

In April 1990, the Board held its annual conference which included dissemination of information regarding nursing practice issues and Kentucky Board of Nursing advisory opinion statements to administrators of nursing services, prelicensure nursing education programs, and continuing education providerships. Information regarding opinions dealing with the practice of nursing was published in the Board newsletter, KBN COMMUNIQUE'.

At the close of the year, the Practice Committee was in the process of studying various nursing practice issues including the roles of nurses in the delivery of prehospital emergency medical care; administration of medications in nursing care facilities, and patient abandonment, mandatory overtime and assignments for delivery of nursing care.

The Nursing Practice Act authorizes the Board to issue limited licenses to handicapped but otherwise qualified applicants for licensure. As of June 1990, limited licenses were issued to twenty-seven (27) individuals who reported handicaps that may impair their ability to safely perform the full scope of nursing practice. The Board is continuing to collect data on individuals who self-report health conditions which may affect practice as a nurse.

### Investigation and Disciplinary Action

The total number of complaints received increased by five percent (5%) during the past year. The caseload has not decreased significantly, due to the increase in the number of complaints and the volume carried forward from the previous year. Sixty complaints were entered for individuals who failed to meet continuing education requirements as specified in KRS Chapter 314. Administrative regulations relevant to the investigation and disposition of complaints and procedures for disciplinary hearings, have been followed in the disposition of complaints through the use of hearings, agreed orders and consent decrees. Records for applicants who indicated previous criminal convictions were reviewed by one (1) member of the Board before being processed.

The twenty-two percent (22%) increase in the number of licensees with limited or probated licenses who were mandated to meet with a representative of the Board on a quarterly or semiannual basis, have written reports submitted during the probationary period and meet various other requirements, required additional staff time.

During 1990-91, disciplinary action will need to be considered for both the current caseload of 126 active cases and for the complaints projected to be received during the coming year. Please refer to Table 5.

Board Guidelines for Determining the Need for Disciplinary Action on KRS 314 Violations and Conviction Records were used for reviewing applications of those licensure applicants who have had a previous criminal conviction record, or previous disciplinary action in another jurisdiction. These guidelines have assisted with the review of suspected violations and/or conviction records, and provided direction to staff for handling these situations in a timely manner.

During the past year, a Credentials Review Panel with a membership of two (2) Board members considered those matters related to licensure credentials and disciplinary investigation and action not otherwise covered by guidelines set by the Board of Nursing and applicable laws. This panel's recommendations regarding cases which fall outside of available precedent have continued to aid in the processing of complaints.

During the year, there were no appeals of disciplinary orders of the Board.

The dismissal of the case of Collard v Kentucky Board of Nursing, et al by the U.S. District Court for the Western District of Kentucky was upheld by the U.S. Court of Appeals, Sixth Circuit.

Three members of the Board staff and one Board member were appointed to continue to serve on the Advisory Committee of Nurses Assisting Nurses (NAN), a project initiated by the University of Kentucky College of Nursing in 1983, which was designed to offer help to registered nurses with alcohol and drug problems and emotional stress. One staff person was appointed to serve on the Kentucky Nurses Association Task Force to Develop a Statewide Plan for Impaired Nurses.



### Disciplinary Actions

The Kentucky Nursing Practice Act provides that the Board of Nursing may "deny, limit, revoke, probate or suspend any license to practice nursing issued by the Board or applied for ... or to otherwise discipline a licensee or to deny admission to the licensure examination, or to require evidence of evaluation and therapy."

The Board has continued its efforts to make the public aware of the investigatory and disciplinary procedures and to emphasize the legal requirement and importance of reporting nurses who are suspected of engaging in unsafe or illegal practices.

The Board participates in the National Council of State Boards of Nursing Disciplinary Data Bank which provides monthly reports to all participants of disciplinary action taken by Boards of Nursing throughout the United States. Reports were received in the Board office on a monthly basis, and were routinely reviewed as a part of the procedure for licensure application review.

Thirty-six (36) decisions were entered, fifty-nine (59) agreed orders were approved, and eighty-one (81) consent decrees were ratified by the Board for licensees and/or applicants and resulted in the actions illustrated in Table 5. Thirty-one (31) staff recommendations for removal from probation were approved by the Board.

TABLE 5  
DISCIPLINARY ACTIONS  
1989-90

TYPE OF ACTION	LICENSE TYPE	
	RN	LPN
Licenses Revoked	3	0
Licenses Suspended	13	6
Immediate Temporary Suspension of License	1	0
Licenses Suspended followed by Probation	7	3
Licenses Probated	7	12
Licenses Limited/Probated	12	1
Licenses Continued on Probation	3	0
Voluntary Surrender of License	4	2
Requests for Reinstatement of a Revoked/Suspended License - Granted on a Probationary Basis	4	1
Licenses Reinstated on Probation	0	3
License Reinstatement Denied	2	0
Applicants Convicted of a Misdemeanor or Felony Admitted to Examination, License on Probation	0	3
Public Reprimand	7	0
Imposition of Civil Penalty Only	1	0
Consent Decree/Civil Penalty	53	28
Number of Complaints Received: 288		
-----		
Complaints for applicants with conviction records handled on an informal basis.....		103
Complaints/No formal action deemed necessary or possible.....		17
Applications filed away in cases where individuals could not be located, were deceased or criminal charges were dismissed.....		3
Active cases as of 6/30/90: 126*		
Thirty-six (36) cases, including seventeen (17) consent decrees for individuals who failed to meet continuing education requirements, are scheduled for final action during the August 1990 Board meeting.		

## PART IV

### LICENSURE AND REGISTRATION ACTIVITIES

#### Nurse Credentials and Licensure Requirements

The primary mission of the Board of Nursing is public protection. This mission continued to be accomplished through the licensure and registration of only those applicants who met statutory and regulatory requirements. Administrative regulations relevant to licensure requirements have been followed during the past year.

#### REGISTERED NURSE/ADVANCED REGISTERED NURSE DATA

Given the continuing national and statewide concern regarding the shortage of licensed nurses, the fiscal year licensure statistics have been given careful scrutiny. As illustrated in Table 20, the total number of registered nurse (RN) licensees increased by 8% in fiscal year 1990 following a 7% decrease the prior year. The total number of licensed practical nurse licensees decreased by 4% during the same period. The number of advanced registered nurse practitioners (ARNPs) increased significantly (17%) with the largest percentage increase by specialty type occurring in nurse anesthetist registrations (22).

#### LICENSED PRACTICAL NURSE DATA

While the number of new graduates from Kentucky prelicensure licensed practical nurse programs increased by (13%) from the previous year, overall, the total number of licensed practical nurses licensed in the Commonwealth decreased by 4% during fiscal year 1990.

#### VERIFICATION/ENDORSEMENT DATA

A review of verification and endorsement data reveals that Kentucky continues to be a "supplier" state, with more licensees being verified for licensure in other jurisdictions (verification total 1,751) than being endorsed for Kentucky licensure from other jurisdictions (endorsement total 1,358). This pattern has been consistent since fiscal year 1980.

#### ACTIVE LICENSURE DATA

Finally, the percentage of licensees holding active licensure status (which allows for active practice in Kentucky) has remained stable during the past two fiscal years. Eighty-seven percent (87%) of both the licensed practical nurse and the registered nurse populations hold active licensure, figures which fluctuate an average of 1-3% annually. This high percentage of licensure population in the available employment pool is consistent with national nursing licensure population norms.

#### LICENSURE VERIFICATION/TEMPORARY WORK PERMIT DATA

The licenses of nurses were monitored by checking more than 700 lists of employed licensees submitted by employers of both registered and licensed practical nurses. This mechanism assists employers in the determination of qualifications of nurses both prior to employment and on an ongoing basis. In addition, 2,289 registered nurses and 863 licensed practical nurse applicants for licensure were issued temporary work permits to expedite nursing employment. (Permits are issued within three to five days after receipt of a completed application form.)

## Licensure Examinations

Since the initiation of national licensure examinations for nurses in the late 1940s, the Kentucky Board of Nursing has adopted officially as its licensure examination, those examinations provided by the National League for Nursing Test Service and most recently by the CTB/McGraw-Hill Test Service, under the auspices of the National Council of State Boards of Nursing, Inc. (NCSBN). Prior to the July 1982 examination, the title of the examination was the State Board Test Pool Examination (SBTPE). Since 1982, the examination is entitled the National Council Licensure Examination (NCLEX), with the designation of either RN for registered nurses or PN for practical nurses. The licensure examinations (NCLEX) are scored by using a criterion-referenced scoring system instead of a norm-referenced scoring system. Effective with the October 1988 examination, the National Council of State Boards of Nursing instituted pass/fail reporting of examination results; scores are no longer reported by the test service.

The comprehensive National Council Licensure Examination for registered nurse licensure, based on a revised test plan, consists of an examination with four parts with one score/result reported. Prior to 1982, any registered nurse candidate who failed any one test of the five part State Board Test Pool Examination, was not allowed to practice nursing until such time as all five tests were passed. Candidates who do not pass the comprehensive NCLEX examination must retake all four parts. There is no limit to the number of times a candidate may take the examination. In January 1989, the Kentucky Board of Nursing submitted a request to the NCSBN for consideration of increasing the administration of NCLEX examination from two to three times per year for both RN and LPN licensure candidates. The NCSBN Delegate Assembly is to consider the administration of a third examination at the annual meeting in August 1990.

During the past several years, the pass-rate of graduates from Kentucky programs has been comparable to the national percentage pass-rate of all graduates who took the licensure examination for the first time.

For those candidates who were unsuccessful in passing the licensure examination, a Diagnostic Profile Report is prepared. This profile reports the candidates' performance in each test plan category according to the content requirements of the examination and indicates test plan areas for candidates to study in preparation for the next examination. The Diagnostic Profile should assist candidates in preparing to retake the examination and to achieve a passing result.

The Kentucky Board of Nursing has continued to follow the National Council of State Boards of Nursing procedure for responding to the needs of handicapped candidates. This procedure provides for modification of the administration of the examination to accommodate handicapped candidates in compliance with the U.S. Rehabilitation Act of 1973.

Two Kentucky nurses were selected by the National Council of State Boards of Nursing to be item writers for the registered nurse licensure examination and two were selected for the practical nurse examination during 1989-90. One Board member was appointed to serve on the NCSBN Examination Committee and one member was selected to be on the Panel of Content Experts. In addition, one staff person was appointed to the NCSBN Administration of Examination Committee.

Finally, it should be noted that the past year has shown a two percent (2%) decrease in the number of candidates (first time writers) for licensure by examination as registered nurses, while the number of candidates (first time writers) for licensure by examination as licensed practical nurses increased by fifteen percent (15%) in comparison to the previous year.

## Registered Nurse Licensure by Examination

The Kentucky Nursing Practice Act states, "An applicant shall be required to pass a written examination in such subjects as the board may determine." This applies to applicants for registered nurse licensure and applicants for practical nurse licensure. The Kentucky Board of Nursing administers the National Council Licensure Examination to both registered nurse and licensed practical nurse applicants. Statistics on the number of candidates writing for the first time and percent passing the examination follow.

TABLE 6

### NATIONAL COUNCIL LICENSURE EXAMINATION REGISTERED NURSE (NCLEX-RN) COMPARATIVE RESULTS: ALL U.S. JURISDICTIONS AND KENTUCKY FIRST TIME WRITERS

---

---

<u>EXAMINATION</u>	
JULY 1989 (FORM 789)	
Total Number of Candidates - All U.S. Jurisdictions.....	48,972
Number of Kentucky Educated Candidates.....	1,004
Total Number of Candidates Writing in Kentucky.....	965
Percent Passing - All U.S. Jurisdictions.....	86.5
Percent Passing - All Kentucky Educated Candidates.....	89.0
FEBRUARY 1990 (FORM 290)	
Total Number of Candidates - All U.S. Jurisdictions.....	13,711
Number of Kentucky Educated Candidates.....	181
Total Number of Candidates Writing in Kentucky.....	180
Percent Passing - All U.S. Jurisdictions.....	86.4
Percent Passing - All Kentucky Educated Candidates.....	85.6

---

TABLE 7  
NATIONAL COUNCIL LICENSURE EXAMINATION  
REGISTERED NURSE (NCLEX-RN) PERCENT PASS RATE BY PROGRAM\*  
FORM 789 AND FORM 290

PROGRAM	NCLEX-RN 789			NCLEX-RN 290			Total FY 90		
	No. Candidates	No. Passed	% Passed	No. Candidates	No. Passed	% Passed	No. Candidates	No. Passed	% Passed
<b><u>BACCALAUREATE DEGREE PROGRAMS</u></b>									
Bellarmino College	16	11	69.0	11	6	55.0	27	17	63.0
Berea College	13	13	100.0	--	--	--	13	13	100.0
Eastern Kentucky University	24	24	100.0	29	26	90.0	53	50	94.0
Murray State University	27	25	93.0	7	3	43.0	34	28	82.0
Spalding University	27	26	96.0	2	2	100.0	29	28	97.0
Thomas More College	8	8	100.0	1	1	100.0	9	9	100.0
University of Kentucky	72	56	78.0	6	6	100.0	78	62	80.0
University of Louisville	<u>66</u>	<u>61</u>	<u>92.0</u>	<u>19</u>	<u>18</u>	<u>95.0</u>	<u>85</u>	<u>79</u>	<u>93.0</u>
<b><u>ALL BSN PROGRAMS</u></b>	<b>253</b>	<b>224</b>	<b>89.0</b>	<b>75</b>	<b>62</b>	<b>83.0</b>	<b>328</b>	<b>286</b>	<b>87.0</b>
<b><u>ASSOCIATE DEGREE PROGRAMS</u></b>									
Ashland Community College	40	38	95.0	1	1	100.0	41	39	95.0
Eastern Kentucky University	39	34	87.0	34	30	88.0	73	64	88.0
Elizabethtown Community Coll.	49	43	88.0	--	--	--	49	43	88.0
Hazard Community College	35	27	77.0	--	--	--	35	27	77.0
Henderson Community College	39	36	92.0	1	1	100.0	40	37	93.0
Jefferson Community College	86	79	92.0	--	--	--	86	79	92.0
Kentucky State University	37	28	76.0	1	1	100.0	38	29	76.0
Kentucky Wesleyan College	20	18	90.0	--	--	--	20	18	90.0
Lexington Community College	57	54	95.0	1	0	0	58	54	93.0
Maysville Community College	23	21	91.0	--	--	--	23	21	91.0
Midway College	29	26	90.0	--	--	--	29	26	90.0
Northern Kentucky University	70	69	99.0	--	--	--	70	69	99.0
Paducah Community College	59	52	88.0	--	--	--	59	52	88.0
Pennyrile Regional Program	41	37	90.0	9	9	100.0	50	46	92.0
Pikeville College	18	13	72.0	--	--	--	18	13	72.0
Prestonsburg Community Coll.	12	11	92.0	13	12	92.0	25	23	92.0
Somerset Community College	29	26	90.0	--	--	--	29	26	90.0
Southeast Community College	14	13	93.0	--	--	--	14	13	93.0
Western Kentucky University	<u>54</u>	<u>45</u>	<u>83.0</u>	<u>46</u>	<u>39</u>	<u>85.0</u>	<u>100</u>	<u>84</u>	<u>84.0</u>
<b><u>ALL ADN PROGRAMS</u></b>	<b>751</b>	<b>670</b>	<b>89.0</b>	<b>106</b>	<b>93</b>	<b>88.0</b>	<b>857</b>	<b>763</b>	<b>89.0</b>
<b><u>ALL KENTUCKY PROGRAMS</u></b>	<b>1004</b>	<b>894</b>	<b>89.0</b>	<b>181</b>	<b>155</b>	<b>86.0</b>	<b>1185</b>	<b>1049</b>	<b>89.0</b>

\*First Time Writers, Graduates of Kentucky Programs Taking NCLEX-RN.

### Licensed Practical Nurse Licensure by Examination

The Kentucky Nursing Practice Act states, "An applicant shall be required to pass a written examination in such subjects as the board may determine." This applies to applicants for registered nurse licensure and applicants for practical nurse licensure. The Kentucky Board of Nursing administers the National Council Licensure Examination to both registered nurse and licensed practical nurse applicants. Statistics on the number of candidates writing for the first time and percent passing the examination follow.

TABLE 8

NATIONAL COUNCIL LICENSURE EXAMINATION  
LICENSED PRACTICAL NURSE (NCLEX-PN) COMPARATIVE RESULTS:  
ALL U.S. JURISDICTIONS AND KENTUCKY  
FIRST TIME WRITERS

---

EXAMINATION

OCTOBER 1989  
(FORM 089)

Total Number of Candidates - All U.S. Jurisdictions....	25,430
Number of Kentucky Educated Candidates.....	420
Total Number of Candidates Writing in Kentucky.....	425
Percent Passing - All U.S. Jurisdictions.....	89.6
Percent Passing - All Kentucky Educated Candidates.....	89.8

APRIL 1990  
(FORM 490)

Total Number of Candidates - All U.S. Jurisdictions....	14,663
Number of Kentucky Educated Candidates.....	225
Total Number of Candidates Writing in Kentucky.....	217
Percent Passing - All U.S. Jurisdictions.....	89.8
Percent Passing - All Kentucky Educated Candidates.....	90.2

---

TABLE 9  
NATIONAL COUNCIL LICENSURE EXAMINATION  
NCLEX-PN PERCENT PASS RATE BY PROGRAM\*  
LICENSED PRACTICAL NURSE\*  
FORM 089 AND FORM 490

PROGRAM	NCLEX-PN 089			NCLEX-PN 490			TOTAL FY 90		
	No. Cand.	No. Passed	%** Passed	No. Cand.	No. Passed	%** Passed	No. Cand.	No. Passed	%** Passed
Ashland State Voc.-Tech. School	33	31	94.0	1	0	00.0	34	31	91.0
Central Ky. St. Voc.-Tech. School	20	18	90.0	22	22	100.0	42	40	95.0
Cumberland Valley Health Occupations Center	24	21	88.0	1	1	100.0	25	22	88.0
Danville School of Health Occupations	23	21	91.0	31	24	77.0	54	45	83.0
Glasgow School for Health Occupations	53	49	93.0	--	--	--	53	49	93.0
Hazard State Voc.-Tech. School	20	18	90.0	12	12	100.0	32	30	94.0
Jefferson State Voc.-Tech. School	29	28	97.0	21	19	91.0	50	47	94.0
Madisonville Health Occupations School	24	21	88.0	26	26	100.0	50	47	94.0
Mayo State Voc.-Tech. School	22	22	100.0	01***	0	00.0	23	22	97.0
Murray Area Vocational Education Center	19	17	90.0	--	--	--	19	17	90.0
Northern Kentucky Health Occupations Center	26	23	89.0	29	21	72.0	55	44	80.0
Owensboro State Voc.-Tech. School	26	20	77.0	12	12	100.0	38	32	84.0
Rowan State Voc.-Tech. School	33	28	85.0	--	--	--	33	28	85.0
Somerset State Voc.-Tech. School	1	0	00.0	26	25	96.0	27	25	93.0
Spencerian College	22	21	96.0	25	23	92.0	47	44	94.0
West Kentucky State Voc.-Tech. School	30	27	90.0	--	--	--	30	27	90.0
Wm. Booth School of PN Education	14	11	79.0	18	18	100.0	32	29	91.0
Candidate with Invalid Program Code	1	1	100.0	0	0	0	1	1	100.0
<b>ALL KENTUCKY PROGRAMS</b>	<b>420</b>	<b>377</b>	<b>90.0</b>	<b>225</b>	<b>200</b>	<b>90.0</b>	<b>645</b>	<b>580</b>	<b>90.0</b>

\* First Time Writers, All Graduating from Kentucky Programs.

\*\* Percent (%) Rounded to Nearest Whole Number

\*\*\*1986 Graduate; First-time Writer



### Licensure by Endorsement

KRS 314.041(4) states, "The board may issue a license to practice nursing as a registered nurse to an applicant who has passed the state board test pool exam or an equivalent examination approved by the board and been licensed as a registered nurse under the laws of another state, territory or foreign country, if in the opinion of the board, the applicant is qualified to practice professional nursing in this state."

KRS 314.051(5) states, "The board may issue a license to practice as a licensed practical nurse to any applicant who has passed the state board test pool exam or an equivalent examination approved by the board and has been licensed or registered as a licensed practical nurse or a person licensed to perform similar services under a different title, under the laws of another state, territory or foreign country if, in the opinion of the board, the applicant meets the requirements for a licensed practical nurse in this state."

KRS 314.101(3) states, "A temporary work permit may be issued by the board to persons who have completed the requirements for, applied for and paid the fee for licensure by examination or endorsement. Temporary work permits shall be issued only for the length of time required to process applications for endorsement or to conduct and determine the results of examinations and shall not be renewed. No temporary work permit shall be issued to an applicant who has failed the licensure examination."

As shown in Table 10, during fiscal year 1989-90, 343 more RNs and 50 more LPNs left Kentucky than came to Kentucky. The Commonwealth of Kentucky continues to be a supplier state for nursing manpower.

---

TABLE 10  
ENDORSEMENT/VERIFICATION  
ACTIVITY: RN AND LPN

---

---

	<u>RN</u>	<u>LPN</u>
<u>ENDORSEMENT ACTIVITY</u>	1989-90	1989-90
No. of Licenses Issued (Qualified by education, examination and a current active license in another state)	1058	300
No. Temporary Permits Issued (Qualified by education, examination and a current active license in another state)	1086	317
<u>VERIFICATION ACTIVITY</u>		
No. Licensees Verified to Requesting Parties	1401	350

---

TABLE 11  
LICENSEES BY ENDORSEMENT  
BY  
JURISDICTION OF ORIGINAL LICENSURE  
7/1/89-6/30/90

<u>JURISDICTION OF ORIGINAL LICENSURE</u>	<u>LICENSURE TYPE</u>		<u>JURISDICTION OF ORIGINAL LICENSURE</u>	<u>LICENSURE TYPE</u>	
	<u>RN</u>	<u>LPN</u>		<u>RN</u>	<u>LPN</u>
Alabama	23	3	Montana	3	0
Alaska	0	0	Nebraska	12	0
Arizona	10	3	Nevada	1	1
Arkansas	5	7	New Hampshire	2	1
California	30	0	New Jersey	16	3
Colorado	7	0	New Mexico	5	1
Connecticut	2	1	New York	38	3
Delaware	2	1	North Carolina	23	5
District of Columbia		0	North Dakota	6	0
Florida	44	20	Ohio	208	56
Georgia	22	2	Oklahoma	5	5
Hawaii	2	1	Oregon	4	0
Idaho	2	0	Pennsylvania	41	8
Illinois	78	21	Rhode Island	0	0
Indiana	94	37	South Carolina	14	1
Iowa	5	2	South Dakota	4	0
Kansas	13	3	Tennessee	89	50
Kentucky	0	0	Texas	36	8
Louisiana	11	2	Utah	2	1
Maine	1	0	Vermont	2	1
Maryland	11	2	Virginia	22	4
Massachusetts	6	4	Washington	3	1
Michigan	23	5	West Virginia	52	22
Minnesota	9	1	Wisconsin	10	1
Mississippi	8	4	Wyoming	0	0
Missouri	40	9	Canada	9	0
			Guam	0	0
			TOTALS	1058	300

TABLE 12

KENTUCKY LICENSEES VERIFIED TO OTHER JURISDICTIONS  
7/1/89-6/30/90

<u>JURISDICTION</u>	<u>LICENSURE TYPE</u>		<u>JURISDICTION</u>	<u>LICENSURE TYPE</u>	
	<u>RN</u>	<u>LPN</u>		<u>RN</u>	<u>LPN</u>
Alabama	23	6	Nevada	5	2
Alaska	6	1	New Hampshire	1	0
Arizona	12	3	New Jersey	8	0
Arkansas	5	0	New Mexico	5	1
California	76	3	New York	15	0
Colorado	14	2	North Carolina	44	8
Connecticut	12	2	North Dakota	1	1
Delaware	2	0	Ohio	118	51
Dist. of Columbia	3	0	Oklahoma	10	1
Florida	124	28	Oregon	4	0
Georgia	62	14	Pennsylvania	13	1
Hawaii	22	1	Rhode Island	1	2
Idaho	1	2	South Carolina	26	7
Illinois	52	18	South Dakota	0	0
Indiana	297	80	Tennessee	139	41
Iowa	3	1	Texas	53	12
Kansas	7	3	Utah	4	0
Louisiana	21	3	Vermont	2	0
Maine	5	0	Virginia	48	13
Maryland	15	2	Washington	6	1
Massachusetts	5	4	West Virginia	44	18
Michigan	37	5	Wisconsin	10	1
Minnesota	4	1	Wyoming	4	1
Mississippi	7	1			
Missouri	13	8	<u>Out of United States:</u>		
Montana	0	0	Canada	3	1
Nebraska	3	0	Australia	1	0
			New Zealand	1	0
			United Kingdom	1	0
			South Africa	2	0
			Virgin Islands	<u>1</u>	<u>0</u>
			TOTALS	1,401	350

### Advanced Registered Nurse Practitioners

Since 1978, Kentucky Revised Statutes 314.131(1) empower the Board to register and designate those persons qualified to engage in advanced nursing practice. KRS 314.011(6) and (7) define "advanced registered nurse practitioner" and "advanced registered nursing practice," respectively. The Kentucky Board of Nursing registers qualified individuals as advanced registered nurse practitioners designated either as nurse anesthetist, nurse-midwife, nurse practitioner, or nurse clinical specialist. During the past year, 130 individuals were registered with the Board as advanced registered nurse practitioners. A summary report of advanced registered nurse practitioner registration is shown in Table 13.

TABLE 13

#### ADVANCED REGISTERED NURSE PRACTITIONER (ARNP) REGISTRATIONS

FISCAL YEAR TOTAL		CUMULATIVE TOTAL	
ARNP Registrations Issued July 1989 - June 1990: 130		Total Current Registrations as of June 30, 1990: 937	
<u>Designations:</u>		<u>Designations:</u>	
Anesthetist	104	Anesthetist	649
Midwife	6	Midwife	45
Practitioner	17	Practitioner	217
Clinical		Clinical	
Specialist	1	Specialist	11
Combinations*	2	Combinations*	15
Total ARNP Registrations Issued through June 30, 1990:		1451	

\*Hold designations as practitioner and midwife.

### Kentucky Nurse Licensees

The Kentucky Nursing Practice Act provides that, "The license of every person under the provisions of KRS 314 ... shall be renewed at least biennially ..." By administrative regulation 201 KAR 20:080, the Kentucky Board of Nursing has determined that the licensure period shall be November 1 to October 31. KRS 314.031 states, "It shall be unlawful for any person to call or hold himself out as or use the title of nurse or to practice or offer to practice as a nurse unless licensed under the provision of KRS 314 ..." Table 14 depicts licensure totals for the fiscal year.

TABLE 14  
LICENSURE TOTALS  
BY LICENSURE TYPE AND STATUS  
1989-90

	<u>RN</u>		<u>LPN</u>	
	Active	Inactive	Active	Inactive
Total Current Licensees As of June 30, 1990*	29,158	4,469	10,378	1,551
Total Out-of-Country	20	18	0	1
Total Out-of-State	4,831	2,715	911	506
Total Residing in Kentucky	24,307	1,736	9,467	1,044
Licenses Issued by Reinstatement	248	11	232	24
Licenses Issued by Activation	125		76	

\*Numbers include renewal of licenses and original Kentucky licenses issued by endorsement and examination during July 1, 1989 to June 30, 1990. Also included are registered nurse and licensed practical nurse licenses issued by reinstatement and activation.

Tables 15 through 19 provide demographic data on licensees and a summary of Board activities.

TABLE 15  
KENTUCKY LICENSEES  
BY GENDER AND  
MARITAL STATUS

<u>Registered Nurses</u>	<u>Number</u>	<u>Percent</u>
(Total - 33,627)		
<u>By Gender:</u>		
Female	32,288	96.0
Male	<u>1,339</u>	<u>4.0</u>
Total	33,627	100.0
<u>By Marital Status:</u>		
Single	4,544	13.5
Married	24,423	72.6
Widowed	1,001	3.0
Div/Sep	3,659	10.9
Not Reported	<u>0</u>	<u>0</u>
Total	33,627	100.0
<u>Licensed Practical Nurses</u>		
(Total - 11,929)		
<u>By Gender:</u>		
Female	11,520	96.6
Male	<u>409</u>	<u>3.4</u>
Total	11,929	100.0
<u>By Marital Status:</u>		
Single	1,140	9.6
Married	8,232	69.0
Widowed	515	4.3
Div/Sep	2,040	17.1
Not reported	<u>2</u>	<u>0</u>
Total	11,929	100.0

TABLE 16  
KENTUCKY REGISTERED NURSES  
BY HIGHEST EDUCATIONAL LEVEL  
AS OF JUNE 30, 1990

<u>Educational Preparation</u>	<u>Number</u>	<u>Percent</u>
Diploma	8,844	26.3
Associate Degree	13,746	40.9
BS in Nursing	7,312	21.7
BS in Other Area	1,529	4.6
Masters in Nursing	1,239	3.7
Masters in Other Area	687	2.0
Doctorate	148	.4
Not Reported	<u>122</u>	<u>.4</u>
Total	33,627	100.0

TABLE 17

1989-1990 KENTUCKY NURSE LICENSEES  
BY TYPE OF LICENSE AND COUNTY OF RESIDENCE

<u>County</u>	<u>RN</u>	<u>LPN</u>	<u>County</u>	<u>RN</u>	<u>LPN</u>	<u>County</u>	<u>RN</u>	<u>LPN</u>
Adair	66	45	Grant	61	44	Mason	130	38
Allen	50	44	Graves	188	124	Meade	75	10
Anderson	92	21	Grayson	131	26	Menifee	12	16
Ballard	45	26	Green	44	38	Mercer	109	115
Barren	153	246	Greenup	229	128	Metcalfe	25	37
Bath	38	32	Hancock	33	19	Monroe	29	35
Bell	157	155	Hardin	561	191	Montgomery	92	32
Boone	417	202	Harlan	188	115	Morgan	34	22
Bourbon	118	45	Harrison	100	42	Muhlenberg	144	157
Boyd	512	250	Hart	57	60	Nelson	174	38
Boyle	173	186	Henderson	331	125	Nicholas	32	14
Bracken	49	29	Henry	55	15	Ohio	104	68
Breathitt	45	41	Hickman	22	13	Oldham	355	71
Breckinridge	66	22	Hopkins	331	227	Owen	36	12
Bullitt	212	83	Jackson	26	9	Owsley	9	4
Butler	41	17	Jefferson	6771	1332	Pendleton	34	22
Caldwell	55	46	Jessamine	265	109	Perry	140	177
Calloway	182	127	Johnson	106	101	Pike	217	302
Campbell	623	237	Kenton	1182	458	Powell	18	26
Carlisle	38	14	Knott	55	90	Pulaski	278	188
Carroll	38	17	Knox	86	86	Robertson	13	11
Carter	113	51	Larue	61	25	Rockcastle	55	42
Casey	45	52	Laurel	148	71	Rowan	121	56
Christian	322	213	Lawrence	54	61	Russell	57	36
Clark	186	68	Lee	10	12	Scott	164	61
Clay	60	48	Leslie	79	31	Shelby	144	19
Clinton	34	25	Letcher	121	155	Simpson	57	17
Crittenden	42	24	Lewis	25	18	Spencer	30	6
Cumberland	21	28	Lincoln	70	124	Taylor	79	32
Daviess	732	321	Livingston	77	25	Todd	23	23
Edmonson	24	16	Logan	93	55	Trigg	60	29
Elliott	12	14	Lyon	31	20	Trimble	20	5
Estill	51	16	McCracken	692	268	Union	89	32
Fayette	3223	615	McCreary	34	28	Warren	680	142
Fleming	74	27	McLean	64	52	Washington	28	34
Floyd	248	235	Madison	458	75	Wayne	58	46
Franklin	284	51	Magoffin	27	23	Webster	65	66
Fulton	27	11	Marion	62	60	Whitley	168	78
Gallatin	14	8	Marshall	149	118	Wolfe	16	10
Garrard	68	48	Martin	30	12	Woodford	212	41
In-State Totals							26,043	10,511
Out-of-State							7,546	1,417
Out-of-Country							38	1
GRAND TOTALS							33,627	11,929

TABLE 18  
KENTUCKY BOARD OF NURSING  
STATISTICS BY COUNTY OF RESIDENCE  
RN AND LPN EMPLOYMENT DATA

CO.	COUNTY NAME	REGISTERED						LICENSED PRACTICAL					
		FULL	PART	UNEMP	OTHER	RETIRED	UNKN	FULL	PART	UNEMP	OTHER	RETIRED	UNKN
1	ADAIR	49	11	3	2	1	0	28	7	6	3	1	0
2	ALLEN	36	6	5	0	2	1	33	1	6	0	3	1
3	ANDERSON	68	15	4	3	1	1	16	1	1	3	0	0
4	BALLARD	27	12	6	0	0	0	18	4	2	2	0	0
5	BARREN	97	33	13	2	8	0	170	39	25	7	2	3
6	BATH	32	1	1	2	2	0	22	5	4	0	1	0
7	BELL	121	13	15	4	3	1	99	15	30	5	5	1
8	BOONE	207	144	38	18	5	5	94	57	26	11	2	12
9	BOURBON	75	19	7	6	11	0	32	7	3	1	1	1
10	BOYD	350	83	62	10	5	2	126	46	45	4	9	20
11	BOYLE	105	31	18	5	13	1	110	25	17	26	7	1
12	BRACKEN	36	7	5	1	0	0	22	2	3	0	0	2
13	BREATHITT	34	3	4	1	1	2	27	10	3	1	0	0
14	BRECKINRIDGE	33	19	12	0	2	0	14	4	4	0	0	0
15	BULLITT	150	46	11	4	1	0	55	16	10	0	1	1
16	BUTLER	28	7	3	1	2	0	10	3	1	2	0	1
17	CALDWELL	42	8	5	0	0	0	28	7	7	2	0	2
18	CALLOWAY	123	31	13	2	10	3	85	21	7	5	8	1
19	CAMPBELL	332	203	49	13	24	2	118	68	27	9	3	12
20	CARLISLE	29	5	2	1	0	1	9	0	4	1	0	0
21	CARROLL	23	8	5	0	2	0	11	3	1	1	1	0
22	CARTER	85	15	10	2	1	0	31	8	11	0	0	1
23	CASEY	33	9	2	1	0	0	25	10	13	2	1	1
24	CHRISTIAN	227	31	41	10	12	1	150	17	23	11	9	3
25	CLARK	129	35	12	6	1	3	45	9	10	3	1	0



TABLE 18 Continued  
 KENTUCKY BOARD OF NURSING  
 STATISTICS BY COUNTY OF RESIDENCE  
 RN AND LPM EMPLOYMENT DATA

CO.	COUNTY NAME	REGISTERED						LICENSED PRACTICAL					
		FULL	PART	UNEMP	OTHER	RETIRED	UNKN	FULL	PART	UNEMP	OTHER	RETIRED	UNKN
26	CLAY	40	13	2	1	3	1	30	11	5	0	1	1
27	CLINTON	28	2	3	0	1	0	19	3	3	0	0	0
28	CRITTENDEN	31	6	4	1	0	0	17	2	5	0	0	0
29	CUMBERLAND	19	0	2	0	0	0	24	3	1	0	0	0
30	DAVIESS	496	117	73	19	23	4	191	51	57	11	9	2
31	EDMONSON	20	2	1	0	1	0	14	1	0	0	0	1
32	ELLIOTT	9	1	1	1	0	0	9	3	2	0	0	0
33	ESTILL	41	6	3	0	1	0	11	1	1	3	0	0
34	FAYETTE	2161	540	292	98	115	17	419	69	68	32	16	11
35	FLEMING	59	11	3	1	0	0	17	5	3	1	0	1
36	FLOYD	189	21	23	6	7	2	155	20	45	11	1	3
37	FRANKLIN	185	42	33	9	14	1	29	10	5	6	1	0
38	FULTON	18	2	4	2	1	0	9	1	0	0	1	0
39	GALLATIN	10	3	1	0	0	0	4	4	0	0	0	0
40	GARRARD	58	6	3	1	0	0	31	6	8	2	1	0
41	GRANT	36	14	8	1	1	1	26	12	3	2	0	1
42	GRAVES	126	29	22	6	4	1	90	18	13	2	1	0
43	GRAYSON	93	21	9	4	3	1	10	12	4	0	0	0
44	GREEN	35	4	2	2	1	0	31	2	4	1	0	0
45	GREENUP	159	47	18	4	5	1	67	26	22	4	3	6
46	HANCOCK	23	6	3	0	1	0	8	3	4	1	2	1
47	HARDIN	382	104	57	12	4	2	124	21	27	7	2	10
48	HARLAN	138	11	33	4	1	1	72	14	19	3	5	2
49	HARRISON	55	20	14	4	7	0	25	12	4	1	0	0
50	HART	39	13	5	0	0	0	35	14	6	3	0	2

TABLE 18 Continued  
KENTUCKY BOARD OF NURSING  
STATISTICS BY COUNTY OF RESIDENCE  
RN AND LPN EMPLOYMENT DATA

CO.	COUNTY NAME	REGISTERED						LICENSED PRACTICAL					
		FULL	PART	UNEEMP	OTHER	RETIRED	UNKN	FULL	PART	UNEEMP	OTHER	RETIRED	UNKN
51	HENDERSON	227	69	24	5	3	3	85	20	9	3	3	5
52	HENRY	38	7	7	1	2	0	12	1	1	0	1	0
53	HICKMAN	19	1	2	0	0	0	11	1	1	0	0	0
54	HOPKINS	220	62	31	3	9	6	128	36	34	14	11	4
55	JACKSON	19	2	3	0	1	1	6	1	2	0	0	0
56	JEFFERSON	4420	1349	587	165	214	36	882	193	131	53	50	23
57	JESSAMINE	151	67	28	14	3	2	68	14	13	11	2	1
58	JOHNSON	77	6	19	1	3	0	52	11	32	1	2	3
59	KENTON	621	390	114	32	16	9	231	118	49	22	5	33
60	KNOTT	44	3	8	0	0	0	48	12	25	3	2	0
61	KNOX	72	6	4	1	1	2	65	8	9	0	1	3
62	LARUE	42	15	2	2	0	0	18	3	2	1	0	1
63	LAUREL	104	17	16	5	4	2	48	7	9	3	4	0
64	LAWRENCE	42	7	4	1	0	0	36	9	11	4	1	0
65	LEE	7	1	1	0	1	0	10	0	2	0	0	0
66	LESLIE	66	3	4	3	1	2	18	7	6	0	0	0
67	LETCHER	94	15	8	3	1	0	86	12	40	4	3	10
68	LEWIS	22	2	0	0	1	0	16	0	1	1	0	0
69	LINCOLN	57	7	4	1	1	0	81	14	18	5	3	3
70	LIVINGSTON	59	10	3	1	4	0	16	2	3	1	2	1
71	LOGAN	67	17	6	3	0	0	36	7	7	1	1	3
72	LYON	22	5	1	0	2	1	12	1	4	2	0	1
73	MCCRACKEN	487	93	73	11	20	8	189	41	18	3	10	7
74	MCCREARY	29	2	1	2	0	0	14	2	10	2	0	0
75	MCLEAN	41	12	6	1	4	0	31	9	8	1	1	2

TABLE 18 Continued  
 KENTUCKY BOARD OF NURSING  
 STATISTICS BY COUNTY OF RESIDENCE  
 RN AND LPN EMPLOYMENT DATA

CO.	COUNTY NAME	REGISTERED						LICENSED PRACTICAL					
		FULL	PART	UNEMP	OTHER	RETIRED	UNKN	FULL	PART	UNEMP	OTHER	RETIRED	UNKN
76	MADISON	342	71	26	9	8	2	51	9	10	3	1	1
77	MAGOFFIN	24	2	1	0	0	0	10	2	8	2	0	1
78	MARION	46	13	1	1	1	0	35	12	6	6	1	0
79	MARSHALL	109	13	20	4	2	1	84	17	8	6	1	2
80	MARTIN	18	5	5	0	1	1	6	1	4	0	0	1
81	MASON	78	31	13	1	7	0	24	2	7	1	2	2
82	MEADE	47	14	9	2	2	1	6	0	1	2	0	1
83	MENIFEE	9	1	2	0	0	0	13	0	2	0	1	0
84	MERCER	75	21	5	2	6	0	69	20	15	6	4	1
85	METCALFE	16	5	3	1	0	0	29	5	1	0	1	1
86	MONROE	25	2	1	0	1	0	29	4	1	1	0	0
87	MONTGOMERY	60	15	7	7	2	1	24	4	3	0	1	0
88	MORGAN	29	3	0	1	0	1	15	3	3	1	0	0
89	MUHLENBERG	99	29	11	1	3	1	94	26	22	8	4	3
90	NELSON	115	33	16	8	0	2	23	6	7	1	0	1
91	NICHOLAS	25	3	2	1	1	0	12	0	1	0	1	0
92	OHIO	71	15	14	1	3	0	38	15	11	0	2	2
93	OLDHAM	202	87	50	13	1	2	37	19	9	3	2	1
94	OWEN	26	6	1	0	3	0	11	0	0	1	0	0
95	OWSLEY	5	1	3	0	0	0	3	1	0	0	0	0
96	PENDLETON	24	8	2	0	0	0	10	6	3	1	1	1
97	PERRY	119	10	8	0	2	1	119	18	34	5	0	1
98	PIKE	163	16	27	3	4	4	193	17	66	17	4	5
99	POWELL	13	3	1	0	1	0	20	4	2	0	0	0
100	PULASKI	203	38	20	6	9	2	131	14	24	9	6	4

TABLE 18 *Continued*  
 KENTUCKY BOARD OF NURSING  
 STATISTICS BY COUNTY OF RESIDENCE  
 RN AND LPM EMPLOYMENT DATA

CO.	COUNTY NAME	REGISTERED						LICENSED PRACTICAL					
		FULL	PART	UNEMP	OTHER	RETIRED	UNKN	FULL	PART	UNEMP	OTHER	RETIRED	UNKN
101	ROBERTSON	9	1	2	1	0	0	7	2	0	1	0	1
102	ROCKCASTLE	44	4	2	3	1	1	25	13	1	2	0	1
103	ROWAN	92	11	10	3	4	1	28	9	11	5	1	2
104	RUSSELL	43	3	6	4	0	1	19	10	6	1	0	0
105	SCOTT	99	23	24	8	8	2	41	12	4	1	0	3
106	SHELBY	87	39	13	4	1	0	9	1	5	2	2	0
107	SIMPSON	43	6	7	1	0	0	14	2	1	0	0	0
108	SPENCER	21	4	3	2	0	0	4	1	1	0	0	0
109	TAYLOR	55	17	3	1	2	1	18	7	1	3	1	2
110	TODD	18	3	1	0	1	0	18	1	4	0	0	0
111	TRIGG	49	3	6	1	0	1	24	0	3	2	0	0
112	TRIMBLE	15	1	0	1	3	0	4	0	0	0	0	1
113	UNION	54	16	14	1	2	2	25	1	5	1	0	0
114	WARREN	453	135	57	22	10	3	88	30	16	4	2	2
115	WASHINGTON	16	7	2	1	2	0	19	4	5	4	1	1
116	WAYNE	49	5	1	2	1	0	30	6	8	1	0	1
117	WEBSTER	45	13	4	2	1	0	26	19	12	6	2	1
118	WHITLEY	111	26	19	7	3	2	60	7	6	2	2	1
119	WOLFE	13	2	0	0	1	0	8	0	2	0	0	0
120	WOODFORD	130	51	18	9	3	1	21	9	3	5	2	1
777	UNKNOWN/INVALID	0	0	0	0	0	0	0	0	0	0	0	0
888	OUT-OF-COUNTRY	21	7	7	2	0	1	0	0	0	0	0	1
999	OUT-OF-STATE	4788	1328	881	247	250	52	641	146	227	84	32	287
GRAND TOTALS		22166	6149	3249	908	941	214	7259	1723	1612	521	277	537

TABLE 19

REGISTERED NURSE STATISTICS BY COUNTY OF RESIDENCE  
AND EDUCATIONAL DATA: JUNE, 1990

PRELICENSURE EDUCATIONAL PREPARATION				HIGHEST EDUCATION LEVEL ATTAINED (N)						
COUNTY	DIPLOMA	ASSOC DEGREE	BACC DEGREE	DIPLOMA	ASSOC DEGREE	BACC NURSING	BACC OTHER	MASTERS NURSING	MASTERS OTHER	DOCT
Adair	12	44	10	12	37	10	2	5	0	0
Allen	9	37	4	9	30	6	1	3	1	0
Anderson	17	64	11	16	55	15	2	3	1	0
Ballard	4	36	5	2	37	5	1	0	0	0
Barren	46	99	8	41	86	17	6	2	1	0
Bath	9	28	1	8	25	3	1	0	1	0
Bell	62	88	7	50	85	7	11	0	3	0
Boone	141	206	70	119	170	87	18	12	11	0
Bourbon	29	69	20	25	63	23	2	5	0	0
Boyd	183	287	42	158	261	58	14	8	9	2
Boyle	69	79	25	58	70	30	9	5	1	0
Bracken	7	40	2	7	38	3	1	0	0	0
Breathitt	15	22	8	13	20	8	2	1	1	0
Breckinridge	21	36	9	20	33	12	0	0	1	0
Bullitt	60	119	33	56	111	40	0	3	1	0
Butler	8	32	1	7	28	5	1	0	0	0
Caldwell	8	37	10	6	32	10	4	3	0	0
Calloway	45	43	94	27	37	77	11	20	6	4
Campbell	217	332	74	190	272	103	32	18	3	4
Carlisle	3	26	9	1	25	10	2	0	0	0
Carroll	17	14	7	17	12	6	1	1	1	0
Carter	21	87	5	20	81	4	5	1	1	0
Casey	4	39	2	4	34	7	0	0	0	0
Christian	79	199	44	65	181	56	9	11	0	0
Clark	47	107	32	39	95	39	6	4	1	2
Clay	18	32	10	12	30	11	2	1	4	0
Clinton	2	26	6	1	23	8	1	0	0	0
Crittenden	7	30	5	7	29	5	1	0	0	0
Camberland	2	17	2	2	15	3	0	0	0	0
Davless	229	421	82	211	370	101	22	17	8	0
Edmonson	3	20	1	4	19	1	0	0	0	0
Elliott	0	11	1	0	10	1	0	1	0	0
Estill	4	33	14	3	30	12	3	3	0	0
Fayette	900	1428	895	735	1075	982	163	185	55	20
Fleming	13	58	3	13	57	3	0	1	0	0
Floyd	40	192	16	31	176	18	15	5	3	0
Franklin	101	147	36	82	127	41	13	12	5	2
Fulton	5	17	5	5	13	8	1	0	0	0
Gallatin	6	8	0	4	8	0	1	0	1	0
Garrard	14	44	10	10	40	11	4	3	0	0
Grant	17	40	4	16	36	6	1	1	0	0
Graves	32	111	45	24	108	47	2	3	2	0

TABLE 19 Continued

REGISTERED NURSE STATISTICS BY COUNTY OF RESIDENCE  
AND EDUCATIONAL DATA: JUNE, 1990

PRELICENSURE EDUCATIONAL PREPARATION				HIGHEST EDUCATION LEVEL ATTAINED (N)						
COUNTY	DIPLOMA	ASSOC DEGREE	BACC DEGREE	DIPLOMA	ASSOC DEGREE	BACC NURSING	BACC OTHER	MASTERS NURSING	MASTERS OTHER	DOCT
Grayson	36	90	5	35	82	7	2	1	2	0
Green	15	27	2	10	22	7	2	0	1	1
Greenup	75	134	20	64	127	22	11	2	3	0
Hancock	6	25	2	5	21	6	1	0	0	0
Hardin	110	353	98	94	315	106	16	13	8	2
Harlan	107	69	12	99	64	8	7	4	6	0
Harrison	36	50	14	34	43	17	2	2	0	0
Hart	12	41	4	10	35	8	3	0	1	0
Henderson	73	222	36	66	187	50	11	12	2	1
Henry	17	29	9	17	28	8	0	1	1	0
Hickman	3	14	5	3	13	4	1	1	0	0
Hopkins	73	213	45	50	186	61	16	11	4	0
Jackson	5	18	3	6	15	2	1	1	1	0
Jefferson	2610	2494	1667	2125	2030	1895	271	214	175	30
Jessamine	62	125	78	47	107	76	14	11	6	2
Johnson	16	83	7	16	73	10	3	2	1	0
Kenton	447	569	166	392	462	204	67	35	14	5
Knott	7	39	9	6	38	6	1	1	2	0
Knox	18	60	8	14	53	7	9	1	2	0
Larue	10	47	4	10	45	5	0	0	1	0
Laurel	34	86	28	34	76	30	3	2	2	1
Lawrence	17	37	0	15	36	0	2	0	1	0
Lee	4	3	3	4	3	3	0	0	0	0
Leslie	26	27	26	16	24	17	8	9	3	2
Letcher	28	85	8	27	82	8	2	1	1	0
Lewis	4	18	3	3	16	4	1	1	0	0
Lincoln	13	50	7	11	46	9	4	0	0	0
Livingston	19	47	11	18	43	11	2	2	1	0
Logan	22	59	12	19	53	14	6	0	1	0
Lyon	5	20	6	4	17	7	1	1	0	0
McCracken	134	448	110	118	404	112	27	17	8	1
McCreary	3	25	6	2	24	5	1	1	1	0
McLean	13	47	4	12	45	4	2	0	1	0
Madison	91	219	148	72	169	146	22	23	19	7
Magoffin	1	25	1	0	25	1	1	0	0	0
Marion	21	25	16	19	24	15	2	0	1	0
Marshall	34	78	37	29	71	32	9	5	2	0
Martin	5	22	3	4	21	4	0	1	0	0
Mason	46	71	13	40	65	11	5	5	4	0
Meade	23	41	11	22	39	9	1	0	2	0
Menifee	4	5	3	4	5	2	0	1	0	0
Mercer	37	56	16	35	51	19	2	1	1	0
Metcalfe	6	18	1	4	16	1	4	0	0	0
Monroe	6	19	4	6	15	7	1	0	0	0

TABLE 19 Continued

 REGISTERED NURSE STATISTICS BY COUNTY OF RESIDENCE  
 AND EDUCATIONAL DATA: JUNE, 1990

PRELIGENSURE EDUCATIONAL PREPARATION				HIGHEST EDUCATION LEVEL ATTAINED (N)						
COUNTY	DIPLOMA	ASSOC DEGREE	BACC DEGREE	DIPLOMA	ASSOC DEGREE	BACC NURSING	BACC OTHER	MASTERS NURSING	MASTERS OTHER	DOCT
Montgomery	21	57	14	18	54	11	3	4	1	1
Morgan	4	29	1	4	25	2	2	0	0	1
Muhlenberg	21	112	11	19	94	20	5	3	1	0
Nelson	54	90	30	47	81	34	6	2	4	0
Nicholas	11	20	1	11	19	1	1	0	0	0
Ohio	28	73	3	23	67	9	4	0	1	0
Oldham	142	136	77	122	111	91	16	8	5	1
Owen	13	21	2	12	19	3	2	0	0	0
Owsley	1	3	5	1	3	3	0	1	1	0
Pendleton	7	21	6	7	17	9	1	0	0	0
Perry	44	79	17	40	76	14	4	4	2	0
Pike	50	155	12	44	150	14	3	4	2	0
Powell	3	12	3	3	9	5	1	0	0	0
Pulaski	57	188	33	49	179	29	6	9	5	0
Robertson	0	12	1	0	11	2	0	0	0	0
Rockcastle	11	36	8	11	33	8	2	0	1	0
Rowan	27	80	14	18	66	15	9	7	4	1
Russell	10	44	3	9	38	6	1	1	0	0
Scott	41	94	29	36	83	31	4	7	2	1
Shelby	49	67	28	47	55	27	9	2	4	0
Simpson	11	41	5	11	37	7	1	1	0	0
Spencer	9	15	6	8	11	10	1	0	0	0
Taylor	20	52	7	16	47	10	3	0	3	0
Todd	5	17	1	5	13	2	0	3	0	0
Trigg	12	41	7	10	37	8	0	2	2	0
Trimble	8	8	4	6	9	4	0	1	0	0
Union	20	60	9	19	57	9	2	0	2	0
Warren	143	482	55	117	386	84	51	23	14	3
Washington	11	14	3	10	13	4	0	0	1	0
Wayne	13	43	2	11	41	3	2	0	1	0
Webster	5	55	5	4	52	8	1	0	0	0
Whitley	43	101	24	36	94	22	6	8	2	0
Wolfe	3	11	2	2	8	4	1	0	0	0
Woodford	64	112	36	50	89	44	13	9	3	3
Out-of-State	2925	2815	1806	2257	2255	1870	450	418	226	50
Out-of-Country	15	9	14	10	7	10	5	3	1	1
Grand Totals	10761	16243	6623	8844	13746	7312	1529	1239	687	148

Total Current RNs 7/4/90 33,505  
 Unreported 122  
 33,627

TABLE 20

## KENTUCKY BOARD OF NURSING

Summary of Ten Year Comparative Data by Fiscal Year

	1980-81	1981-82	1982-83	1983-84	1984-85	1985-86	1986-87	1987-88	1988-89	1989-90
Staff Full Time Permanent	16	18	20	21	23	24	24	26	26	26
Support	13	14	15	16	16	17	17	18	18	18
RN, JD	3	4	5	5	7	7	7	8	8	8
Licensees (Total)	35,819	37,025	36,867	38,925	39,390	41,035	41,249	42,876	43,533	45,556
<u>RN</u> active	21,347	19,781	20,916	21,997	22,737	25,196	24,399	26,824	26,562	29,158
inactive	3,936	5,818	4,937	5,910	4,691	4,599	4,757	4,615	4,588	4,469
<u>LPN</u> active	9,449	8,751	9,228	8,335	10,432	9,509	10,426	9,736	10,779	10,378
inactive	1,087	2,675	1,786	2,683	1,530	1,731	1,667	1,701	1,604	1,551
ARNP (Total)	427	530	552	656	649	712	672	787	796	937
Anesthetist	265	320	330	393	392	429	413	503	533	649
Midwife	41	36	39	51	43	47	43	45	39	45
Practitioner	100	149	159	185	191	211	195	215	201	217
Clinical Specialist	3	6	8	8	8	9	10	11	10	11
Combination	18	19	16	19	15	16	11	13	13	15
Programs of Nursing										
<u>RN</u> (Total) *Including RN extension programs	26	26	29	27	27	29	27	27	30	34
BSN	5	7	7	7	7	9	9	9	10	10
BSN Extension	---	---	---	---	---	---	---	---	1	1
Diploma	1	1	1	---	---	---	---	---	---	---
ADN	20	20	21	20	20	20	18	18	20	20
ADN Extension	2	2	2	2	2	1	2	2	2	3
<u>PN</u> (Total) *Including PN extension programs	21	23	23	23	21	21	20	19	20	22
PN Programs	15	16	16	16	17	17	17	17	17	18
PN Extension	6	7	7	7	4	4	3	2	3	4
Nursing Graduates (Total)	1,789	2,041	2,103	2,098	2,095	1,787	1,719	1,777	1,830	1,971
<u>RN</u> (Total)	1,184	1,199	1,313	1,365	1,416	1,268	1,146	1,183	1,193	1,254
BSN	195	203	194	226	246	336	369	401	342	348
Diploma	90	88	106	43	---	---	---	---	---	---
ADN	899	908	1,013	1,096	1,170	932	777	782	851	906
<u>PN</u>	605	842	790	776	679	519	573	594	637	717



TABLE 20 Continued

## KENTUCKY BOARD OF NURSING

Summary of Ten Year Comparative Data by Fiscal Year

	1980-81	1981-82	1982-83	1983-84	1984-85	1985-86	1986-87	1987-88	1988-89	1989-90
C.E. Providers	98	126	140	153	151	170	178	181	187	163
New Nursing Practice Opinions	---	---	2	5	4	2	4	1	2	3
Total Opinions	---	---	---	7	11	13	17	18	20	23
Exam Candidates (Total)	2,178	2,102	2,189	2,087	2,186	2,077	2,044	1,730	1,958	2,133
RN Total Writing in Ky	1,472	1,336	1,272	1,305	1,398	1,425	1,405	1,119	1,338	1,388
PN Total	706	766	917	782	788	652	639	611	620	754
RN First Time		1,078	1,103	1,206	1,231	1,231	1,239	1,082	1,077	1,145
PN First Time		01	807	747	711	595	558	584	519	642
Endorsements										
RN	946	914	818	740	1,053	969	1,022	997	1,128	1,058
PN	224	224	200	184	205	241	201	273	269	300
Reinstatements										
RN	474	533	681	261	1,318	188	1,265	250	359	259
PN	285	264	479	457	81	904	116	276	140	256
Verifications										
RN	1,147	1,164	1,068	1,230	1,091	1,135	1,243	1,377	1,508	1,401
PN	272	329	352	312	269	300	352	349	381	350
Board Meeting Days	14	11	12	13	14	14	12	13	14	14
Committee Meeting Days	20	25	23	19	25	24	15	15	15	15
Hearing Panel Days	---	11	15	21	15	21	14	17	24	14
Hearings	16	42	42	31	28	45	33	35	46	36
Agreed Orders	2	5	10	28	31	48	56	48	48	59
Consent Decrees	---	---	---	---	3	14	31	20	32	81
Disc. Complaints Received	59	90	105	120	140	196	202	215	273	288
Disc. Complaints Resolved	41	82	95	112	143	204	267	226	228	296
Administrative Regulations										
New	1	7	1	3	12	3	1	1	0	0
Revised	1	2	2	2	15	1	1	25	3	1

# KENTUCKY BOARD OF NURSING

## LONG RANGE PLAN

### INTRODUCTION

The purpose of long range planning is to provide direction for the agency based on its statutory charges and mission. To accomplish this purpose, the Study and Planning Committee of the Kentucky Board of Nursing prepared a comprehensive document which reflects current activities and future directions for the operation of the total agency.

### MISSION AND ASSUMPTIONS

A statement on the mission and assumptions introduces the document. This part of the document includes broad goals adopted by the Board.

### STRATEGIC PLAN

The strategic plan includes three major parts:

- Statement of broad goals.
- Statement of components (strategic goals) of each broad goal.
- Statement of strategic approaches to accomplish the broad goals and respective components.

### OPERATIONAL PLAN

The operational plan further specifies the strategic plan by the addition of the following:

- Major activities for strategic approaches
- Responsible work body
- Decision-making body
- Target date

The Strategic Plan extends over a three to five year period; the Operational Plan extends over a two to three year period. The latter may need revision/updating annually while the former should be reviewed and updated at least biennially.

### DEFINITIONS

Mission Statement: The fundamental reasons for the existence of the organization. The statement defines the uniqueness of the organization and serves as a guide for the future.

Goal: A broad statement of outcome that contributes to the achievement of the mission.

Assumptions: Temporary estimates regarding important probable developments which cannot be predicted with accuracy and over which there is no significant control by the organization.

Strategy: A course of action to accomplish a goal.

- a. Strategic Goal: A statement which defines the components of a broad goal.

b. Strategic Approach: A statement which includes selected methods for achieving a goal.

Major Activity: A specific work effort that results in a measurable outcome contributing to the achievement of a goal.

Approved 6/89

## KENTUCKY BOARD OF NURSING

### LONG RANGE PLAN 1989-1994

#### MISSION

The mission of the Commonwealth of Kentucky Board of Nursing is to enforce public policy related to the safe and effective practice of nursing in the interest of public welfare. As a regulatory agency of state government, the Board of Nursing accomplishes this mission as authorized by Kentucky Revised Statutes and attendant administrative regulations. In accomplishing its aims, the Board of Nursing licenses and registers qualified nurses and advanced registered nurse practitioners, approves providerships for mandatory continuing education and prelicensure programs of nursing, enforces the Nursing Practice Act, and issues nursing practice opinions. In addition, the Board of Nursing cooperates with individuals, groups, organizations, and other state and national entities by the provision of appropriate services to promote safe and effective nursing care for the citizens of the Commonwealth.

#### GOALS AND ASSUMPTIONS

GOAL I ENSURE THAT PERSONS LICENSED AS NURSES AND REGISTERED AS ADVANCED REGISTERED NURSE PRACTITIONERS IN KENTUCKY ARE QUALIFIED ACCORDING TO REQUIREMENTS TO PROVIDE THE CITIZENS OF THE COMMONWEALTH WITH SAFE AND EFFECTIVE NURSING CARE.

##### ASSUMPTIONS:

1. Method of licensure examination administration will change.
2. More practice complaints will be reported.
3. Registered nursing practice will expand to include current scopes of advanced nursing practice.
4. Emphasis on determination of competency will continue.
5. Questioning of mandatory continuing education for validation of competency will increase.
6. Changes in educational requirements for licensure will occur.
7. Scope of nursing practice will expand for licensees.
8. Nursing curricula will change to reflect non-traditional delivery systems.
9. Prelicensure educational programs will require an internship/preceptorship component.

GOAL II OPTIMIZE HUMAN AND FISCAL RESOURCES TO IMPROVE SERVICES AND CONTROL COSTS.

##### ASSUMPTIONS:

1. Automation will enhance Board operation.
2. Nurse manpower data will be valued and used.
3. An increase in fees or identification of other sources of revenue to maintain current level of services will be needed.
4. Difficulty for nurses and consumers to serve on KBN relative to time, energy, and conflicts will occur.
5. Changes in educational requirements for licensure will have ramifications for Board composition.

GOAL III ASSERT LEADERSHIP IN STATE GOVERNMENT AND THE PUBLIC ARENA IN THE REGULATION OF NURSES, NURSING EDUCATION AND NURSING PRACTICE TO PROMOTE THE DELIVERY OF SAFE AND EFFECTIVE NURSING SERVICES.

ASSUMPTIONS:

1. Shortages of nursing manpower will intensify.
2. Qualified students will select other professions.
3. A resurgence of monitoring KBN activities by other groups will occur.
4. The need for education regarding issues surrounding the regulation of nursing will continue.
5. Kentucky nurses will gain national prominence.
6. More nurses will be in independent practice.
7. The number of nurses employed outside of hospitals will increase.
8. Increase in non-licensed persons performing nursing duties will continue.
9. Efforts to implement institutional licensure will resurface.
10. Kentucky Legislature will consider reorganization of state government.
11. Inaccessability of health care for citizens will jeopardize public safety.
12. Corporate control of health care delivery systems will expand.

Approved 6/89

KENTUCKY BOARD OF NURSING

STRATEGIC PLAN 1989-1994

- GOAL I. ENSURE THAT PERSONS LICENSED AS NURSES AND REGISTERED AS ADVANCED REGISTERED NURSE PRACTITIONERS IN KENTUCKY ARE QUALIFIED ACCORDING TO REQUIREMENTS TO PROVIDE THE CITIZENS OF THE COMMONWEALTH WITH SAFE AND EFFECTIVE NURSING CARE.

Strategic Goals (3-5 years)

Strategic Approaches (1-3 years)

- |  |   |
|--|---|
| IA. Promote high quality prelicensure nursing education programs.      | IA1. Promulgate administrative regulations for prelicensure programs of nursing approval.   |
|  | IA2. Study prelicensure educational requirements for eligibility for licensure as a nurse.  |
|  | IA3. Assist prelicensure programs of nursing education with compliance with administrative regulations.   |
| IB. Assure high quality mandatory continuing education for for nurses. | IB1. Promulgate administrative regulations for mandatory continuing education for nurses.   |
|  | IB2. Determine comparability of standards of other organizations with those of the Board administrative regulations for mandatory continuing education. |
|  | IB3. Assist approved providers with compliance with administrative regulations for mandatory continuing education.                                      |
| IC. Determine competency of applicants for licensure and registration. | IC1. Investigate methods for determining competence of applicants/licensees/registrants.  |
|  | IC2. Audit licensees for compliance with continuing education requirements for renewal of licensure.  |
|  | IC3. Monitor impact of limited licensure/handicap status.   |

STRATEGIC PLAN 1989-1994 CONTINUED

- IC4. Maintain sound regulatory requirements for licensure and registration.
- ID. Enforce mandatory licensure of individuals practicing as nurses.
  - ID1. Examine mechanisms for monitoring licensure status.
  - ID2. Cooperate with employers, regulatory and other official agencies regarding licensure of nurses.
- IE. Enhance disciplinary action program to safeguard the public and to ensure due process rights of applicants/licensees/registrants.
  - IE1. Study statutes and administrative regulations regarding investigation and disciplinary activities.
  - IE2. Analyze data on disciplinary actions and limitation of licenses.
  - IE3. Analyze types of complaints reported for implications for nursing practice.
  - IE4. Maintain a sound investigation and disciplinary action program.

STRATEGIC PLAN 1989-1994 CONTINUED

GOAL II. OPTIMIZE HUMAN AND FISCAL RESOURCES TO IMPROVE SERVICES AND CONTROL COSTS.

<u>Strategic Goals (3-5 years)</u>	<u>Strategic Approaches (1-3 years)</u>
IIA. Ensure optimal development of human resources.	IIA1. Study organization of Board agency and operation.
	IIA2. Provide orientation and development program for members of the Board, councils and committees.
	IIA3. Provide orientation and development program for staff.
	IIA4. Implement state affirmative action plan.
	IIA5. Evaluate effectiveness of master staffing plan to provide needed services and revise as needed.
	IIA6. Maintain recognition program for service as volunteer committee and council, staff and Board members.
IIB. Assure sound fiscal planning for agency operation.	IIB1. Maintain fiscal soundness and stability.
	IIB2. Monitor fiscal effectiveness of agency operation.
IIC. Provide facilities to enhance the Board and agency operation.	IIC1. Evaluate environmental needs for the Board and agency operation.
	IIC2. Maintain comprehensive plan for office automation.
	IIC3. Evaluate effectiveness of master plan for office automation.
IID. Maximize effectiveness of operational systems for implementing statutory mandates.	IID1. Revise recordkeeping system to eliminate duplication.



- IIE. Strengthen planning processes for agency effectiveness.
  - IIE1. Utilize established planning process for agency.
  - IIE2. Evaluate effectiveness of total agency operation.
- IID2. Review operational systems for implementing policy.

STRATEGIC PLAN 1989-1994 CONTINUED

GOAL III. ASSERT LEADERSHIP IN STATE GOVERNMENT AND THE PUBLIC ARENA IN THE REGULATION OF NURSES, NURSING EDUCATION, AND NURSING PRACTICE TO PROMOTE THE DELIVERY OF SAFE AND EFFECTIVE NURSING SERVICES.

Strategic Goals (3-5 years)

Strategic Approaches (3-5 years)

- |   |   |
|---|---|
| IIIA. Support sound legislation for the regulation of nurses, nursing education and nursing practice. | IIIA1. Study provisions of Nursing Practice Act and related statutes for the purpose of needed revisions.                       |
|   | IIIA2. Plan strategy for passage of statutory changes as needed.  |
|   | IIIA3. Monitor regulatory proposals and enactments.   |
| IIIB. Participate as a Member Board of the National Council of State Boards of Nursing.               | IIIB1. Participate in activities to fulfill membership responsibilities and as requested by NCSBN.                              |
|   | IIIB2. Promote involvement of volunteers and selected individuals for the various offices, committees and work groups of NCSBN. |
|   | IIIB3. Provide representation for NCSBN meetings and assemblies.  |
| IIIC. Interpret and promote integrity of legal scope of nursing practice.                             | IIIC1. Study issues involving the legal scope of nursing practice.  |
|   | IIIC2. Update advisory opinion statements issued by the Board.  |
| IIID. Cooperate with individuals, groups and organizations to address nursing issues and concerns.    | IIID1. Enhance communication strategies with appropriate individuals and groups.  |
|   | IIID2. Strengthen relationship with programs for impaired nurses.   |
|   | IIID3. Support research relevant to the regulation of nurses, nursing education and nursing practice.                           |

STRATEGIC PLAN 1989-1994 CONTINUED

- IIID4. Develop innovative services for the promotion of public protection.
- IIID5. Increase the public and affected parties' understanding of the regulation of nursing and the contribution of nursing to society.
- IIIE. Disseminate information on the regulation of nurses and advanced registered nurse practitioners, and nursing education and practice.
  - IIIE1. Evaluate information needed by applicants/licensees/registrants/approved entities for compliance with regulations.
  - IIIE2. Enhance communication strategies with individuals and entities affected by regulation.
- IIIF. Establish a comprehensive data base of prelicensure and licensure populations.
  - IIIF1. Study existing system for collection and maintenance of data.
  - IIIF2. Cooperate with individuals and local/state/national organizations and agencies involved in data collection and research.
- IIIG. Celebrate the Seventy-Fifth Anniversary of the Board of Nursing in 1989.
  - IIIG1. Plan for observance of the Seventy-Fifth Anniversary of the Board of Nursing in 1989.

Approved 6/89