

Annual Report 2004-2005



KENTUCKY BOARD OF NURSING

312 Whittington Pky, Suite 300
Louisville, KY 40222-5172
800-305-2042 or 502-429-3300
<http://kbn.ky.gov>

BOARD MEMBERS

Jimmy T. Isenberg, RN, President
Glasgow

Elizabeth Partin, ARNP, Vice-President
Columbia

Sally Baxter, RN, Secretary
Maysville

Catherine Hogan, RN, Financial Officer
Louisville

Mabel Ballinger, Citizen-at-Large
Covington

Phyllis Caudill-Eppenstein, LPN
Ashland

Lori Davis, Citizen-at-Large
Lexington

Susan H. Davis, RN
Louisville

Peggy Fishburn, LPN
Scottsville

Ann Fultz, LPN
Ashland

Marcia Hobbs, RN
Murray

Jan Ridder, RN
Louisville

Ann H. Veno, RN
Crestwood

Mary Gail Wilder, RN
Henderson

Gail I. Wise, RN
Mays Lick

BOARD MEETINGS

August 19-20, 2004
Regular Meeting

September 23-24, 2004
Annual Retreat

September 24, 2004
Special Meeting

October 21-22, 2004
Regular Meeting

November 18, 2004
Special Meeting

December 9-10, 2004
Regular Meeting

February 24-25, 2005
Regular Meeting

April 14-15, 2005
Regular Meeting

June 16-17, 2005
Annual Meeting

COMMITTEE MEETINGS

Nov 18, 2004 Education, Practice & Consumer Protection Committees
Jan 13, 2005 Education & Consumer Protection Committees
Jan 14, 2005 Practice Committee
Mar 17, 2005 Education, Practice & Consumer Protection Committees
May 12, 2005 Education, Practice & Consumer Protection Committees

BOARD OFFICERS

ELECTED APRIL 2005

President: Jimmy T. Isenberg
Vice-President: Elizabeth Partin
Secretary: Susan Davis
Financial Officer: Catherine Hogan

IMMEDIATE PAST

Jimmy T. Isenberg
Elizabeth Partin
Sally Baxter
Catherine Hogan

PAST

M. Susan Jones
June Bell
Elizabeth Partin
Lori Davis

KENTUCKY BOARD OF NURSING

MISSION

The Kentucky Board of Nursing protects public health and welfare by development and enforcement of state laws governing the safe practice of nursing.

CORE VALUES

In order to protect the public, we are committed to:

Distinction Excellence and quality by delivering consistent, effective, and efficient services.

Integrity Honesty, fairness, and objectivity in the development and enforcement of laws and regulations.

Responsiveness Taking initiative, communicating openly, and demonstrating care and concern in all endeavors.

Collaboration Working in a cooperative spirit while maintaining respect for all individuals.

VISION

We aspire to:

Deliver Benchmark quality services in healthcare regulation.

Meet The challenges of a dynamic and ever-changing healthcare environment.

Have An organizational environment that fosters creativity, innovation, and outstanding leadership.

Have A committed and appropriately compensated Board/ staff who have exceptional knowledge and skills.

Achieve Integration of regulatory efforts affecting the health of the public.

Have State-of-the-art technology that promotes effectiveness and efficiency.



Goal 1: *Sound defensible, regulatory practices that protect the public.*

- ◆ Create opportunities for interagency policy development and collaboration.
- ◆ Continue enhancements for the disciplinary action processes.
- ◆ Continue enhancements for the alternative to disciplinary action processes.
- ◆ Increase public awareness and understanding of the role and purpose of the Board of Nursing.
- ◆ Increase the public's participation in regulatory decision making.
- ◆ Continue to plan and evaluate the nursing education requirements, practice issues, and competency determination.
- ◆ Regulate nurses and persons who provide nursing related acts.

Goal 3: *Optimal use of technology that supports agency services.*

- ◆ Plan for implementation of the agency Information Resources Plan.
- ◆ Improve utilization of communications technology.
- ◆ Explore new technologies to enhance agency functions.

Goal 2: *Efficient delivery of services that meet the needs of consumers and regulated entities.*

- ◆ Maintain an organizational structure that promotes effective utilization of agency resources.
- ◆ Enhance communications.
- ◆ Continue to implement workflow redesign for selected agency services.
- ◆ Monitor mutual recognition initiatives.
- ◆ Continue electronic enhancements to licensure and credentialing processes.

Goal 4: *An organizational culture that promotes job satisfaction and career development.*

- ◆ Increase staff involvement in agency planning and policy implementation.
- ◆ Enhance orientation and development programs for the members of the Board, committees, and councils.
- ◆ Enhance means to increase service recognition of volunteers, Board and staff members.
- ◆ Monitor and maintain appropriate compensation for employees and Board members.
- ◆ Increase understanding of job functions throughout the agency.

Board of Nursing Composition, Structures & Operations

BOARD ACTIVITIES

All meetings of the Board and its committees and councils were held in open session as required by the open meetings law. The commitment of the members of KBN and the dedication of its staff continued in unabated fashion. Appreciation for this service by KBN staff and members was expressed through the recognition programs of the agency and executive branch of state government.

Kathy Martin, RN, resigned from the Board; Patricia Birchfield, ARNP, was newly appointed. Retiring Board members Sally Baxter, RN; Lori Davis, Citizen-at-Large; Anne Veno, RN; and Mary Gail Wilder, RN, were thanked for their substantial contributions to KBN. Melda Sue Logan, Citizen-at-Large, and Carol Komara, RN, were newly appointed to the Board. All were welcomed.

KBN REPRESENTATIVES

Health Service Council of Metropolitan Louisville
Greater Louisville Workforce Consortium

Associate Member: *Sharon Weisenbeck, RN*

Clinical Teaching Subcommittee: *Patricia Spurr, RN*

Patient Care Model Subcommittee: *Sharon Weisenbeck, RN*

Recruitment/Retention Committee: *Sharon Weisenbeck, RN*

Kentuckiana Contingency Planners Group

Don Snow, Treasurer

Ky Association of Health Care Facilities

Sally Baxter, RN

Ky Association of Homes & Services for the Aging

Anne H. Veno, RN

Ky Coalition of Nurse Practitioners & Nurse
Midwives

Elizabeth Partin, ARNP

Ky Council of Associate Degree Nursing

Mary Gail Wilder, RN; Patricia Spurr, RN

Ky Council of Baccalaureate & Higher Degree
Nursing

Marcia Hobbs, RN; Patricia Spurr, RN

Ky Council of Practical Nursing

Jimmy Isenberg, RN; Patricia Spurr, RN

Ky Dental Health Coalition, Inc.

Sue Derouen, RN

Ky Health Data Council

Sharon Weisenbeck, RN

Ky Medical Association Patient Safety Task Force

Elizabeth Partin, ARNP

Ky Hospital Association

Center for Nursing/Allied Health Professions Advisory Board:

Sharon Weisenbeck, RN

Nursing Workforce Foundation: *Sharon Weisenbeck, RN*

Practice/Education Subcommittee: *Patricia Spurr, RN*

Ky Nurses Association

Board of Directors: *Jimmy Isenberg, RN*

Cabinet on Nursing Practice: *Catherine Hogan, RN; Bernadette Sutherland, RN*

Centennial Committee: *Sandy Johanson, RN*

Nursing Education & Research Cabinet: *Gail Wise, RN; Patricia Spurr, RN*

Ky Nurse Day Committee

Anne Veno, RN; Judy Amig, RN

Ky Organization of Nurse Leaders

Jan Ridder, RN

Ky State Association of LPNs

Phyllis Caudill-Eppenstein, LPN

National Council of State Boards of Nursing

Delegates: *Jimmy Isenberg, RN; Peggy Fishburn, LPN*

Alternate Delegates: *Catherine Hogan, RN; Sharon Weisenbeck, RN*

APRN Advisory Panel: *Marcia Hobbs, RN*

Board of Directors: *Marcia Hobbs, RN*

Committee to Approve the 2004 Meeting Minutes: *Sharon Weisenbeck, RN*

Governance & Leadership Task Force: *Marcia Hobbs, RN*

International Nurse Subcommittee for Practice/Education: *Joyce Bonick, RN*

Model Act Revision Subcommittee: *Nathan Goldman, JD*

Practice/Ed Subcmt on Delegation/Assistive Personnel: *Sue Derouen, RN*

Oral Health Statewide Strategic Planning Mtgs

Sue Derouen, RN

Sexual Assault Response Team Advisory Committee

Sharon Weisenbeck, RN

COMMITTEES, COUNCILS, GROUPS, PANELS

CONSUMER PROTECTION COMMITTEE *

The Consumer Protection Committee considers those matters related to investigation and disciplinary processes and preparation of hearing panel members.

Mary Gail Wilder, RN, Chairperson
Mabel Ballinger, Citizen-at-Large
Sally Baxter, RN
Lori Davis, Citizen-at-Large
Peggy Fishburn, LPN

EDUCATION COMMITTEE *

The Education Committee considers those matters related to mandatory continuing education and prelicensure nursing education in the Commonwealth.

Marcia Hobbs, RN, Chairperson
Ann Fultz, LPN
Jimmy Isenberg, RN
Anne H. Veno, RN
Mary Gail Wilder, RN
Gail Wise, RN

PRACTICE COMMITTEE *

The Practice Committee considers those matters related to the interpretation of the legal scope of nursing practice as defined in *Kentucky Nursing Laws* and KBN administrative regulations. Committee deliberations may include review of other relevant statutes and regulations as necessary.

Catherine Hogan, RN, Chairperson
Sally Baxter, RN
Phyllis Caudill-Eppenstein, LPN
Susan H. Davis, RN
Elizabeth Partin, ARNP
Jan Ridder, RN

NURSING INCENTIVE SCHOLARSHIP FUND GRANT REVIEW COMMITTEE

The Nursing Incentive Scholarship Fund Grant Review Committee reviews all proposals for nursing workforce competency development grants and makes recommendations to the Board.

Lori Davis, Citizen-at-Large, Chairperson

CREDENTIALS REVIEW PANEL

The Credentials Review Panel considers those matters related to licensure and registration credentials and disciplinary investigation and action not otherwise covered by applicable laws and/or guidelines set by KBN.

Jan Ridder, RN, Chairperson
Elizabeth Partin, ARNP
Anne H. Veno, RN

ADVANCED REGISTERED NURSE PRACTICE COUNCIL

Related organizations nominate representatives for membership on the ARNP Council, as an advisory body to KBN. The council advises and recommends practice standards regarding the performance of acts relative to nurse anesthesia, nurse-midwifery, nurse practitioner and clinical nurse specialist practice.

Elizabeth Partin, ARNP, Chairperson
Patricia C. Birchfield, ARNP-P, KNA
Danny M. Clark, MD, KBML
Jill Crawford, ARNP-P, KNA
Kimberly Evans, ARNP-CNS, KNA
Marianne Hutti, ARNP-P, KCNP/NM
Charlotte Smith, ARNP-A, KANA
Patricia Thornbury, RPh, KBPh
Sheila Ward, ARNP-M, KCNP/NM

DIALYSIS TECHNICIAN ADVISORY COUNCIL

The Dialysis Technician Advisory Council advises KBN regarding qualifications, standards for training, competency determination of dialysis technicians, and all other matters related to dialysis technicians.

Peggy Fishburn, LPN, Chairperson
Wendy Martin, DT
Leitha Olson, RN
LaVette Owens, DT
Charles Stewart, DT
R. Lynne Patterson, RN
Mary Pat Stickler, RN

GOVERNANCE PANEL

The Governance Panel is responsible for reviewing certain Board guidelines, Board member development, Board structure, and Board operations. It submits recommendations to the Board on these and related matters.

Elizabeth Partin, ARNP, Chairperson
Mabel Ballinger, Citizen-at-Large
Ann Fultz, LPN
Jan Ridder, RN
Mary Gail Wilder, RN

KBN CONNECTION EDITORIAL PANEL

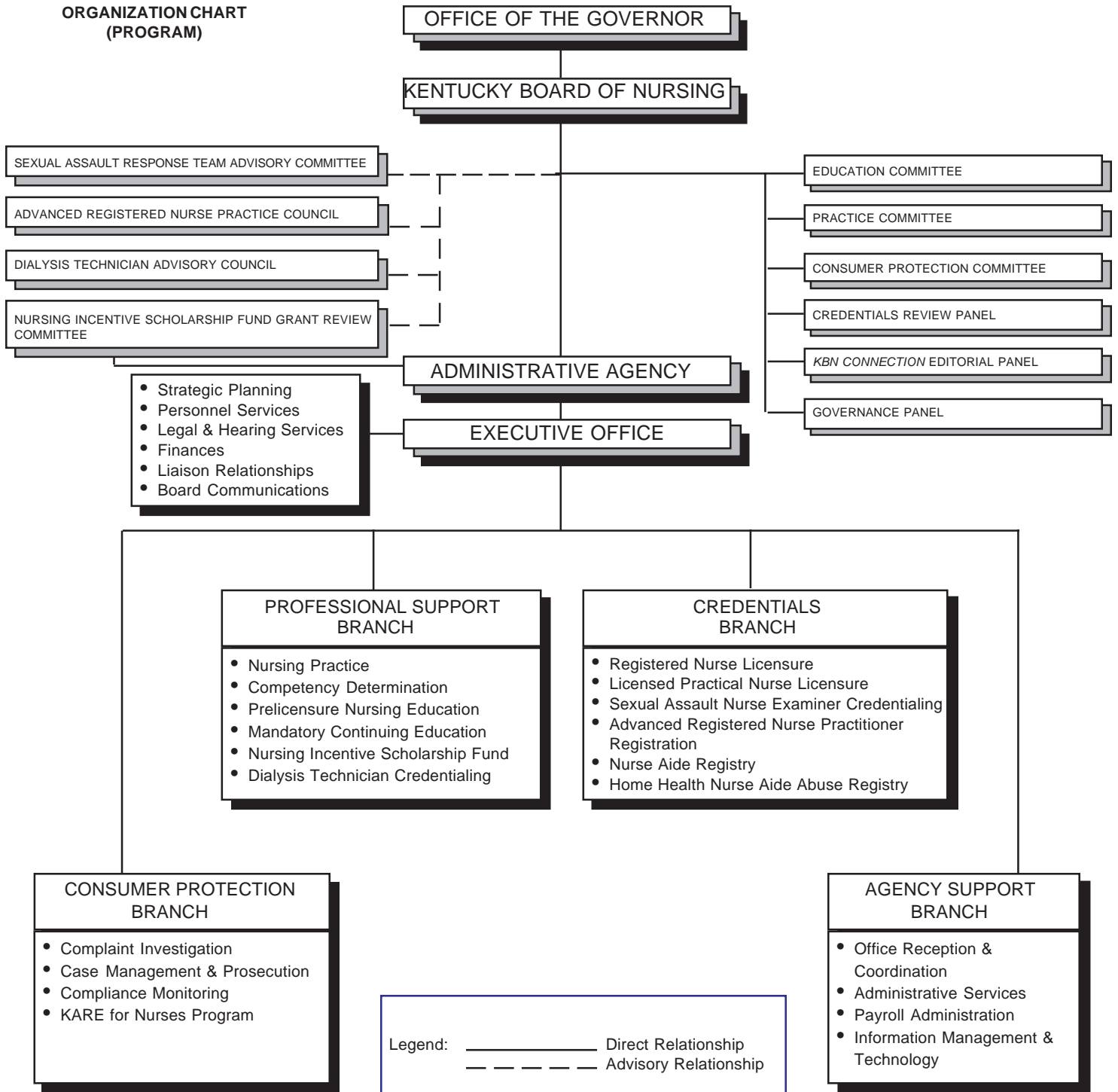
The KBN Connection Editorial Panel considers those matters related to planning for the preparation and publication of the official KBN newsletter, which was published 3 times (fall, winter, and spring) in FY 03-04.

Lori Davis, Citizen-at-Large, Chairperson
Catherine Hogan, RN

* Jimmy T. Isenberg, RN, KBN President, and Sharon M. Weisenbeck, RN, KBN Executive Director, are Ex-Officio Members of Standing Committees

REGULATION OF NURSES AND NURSING EDUCATION AND PRACTICE

ORGANIZATION CHART (PROGRAM)



HIGHLIGHTS OF BOARD ACTIVITIES

This Annual Report provides a synopsis of the various activities conducted by the agency to fulfill its charge to regulate the practice of nursing in order to protect and safeguard the health and safety of the citizens of the Commonwealth of Kentucky [Reference: KRS 314.021(1)]. Highlights of this years' activities are listed below:

- ◆ Directed that the position of executive director of the Kentucky Board of Nursing be offered to Dr. Charlotte Beason and that the KBN president be authorized to negotiate such terms and conditions of employment as are consistent with state personnel law.
- ◆ Accepted the letter from Sharon Weisenbeck, Executive Director, giving notice of retirement effective August 2005.
- ◆ Approved the application from Campbellsville University, Campbellsville, to establish an associate degree program of nursing.
- ◆ Accepted the application from Henderson Community College, Henderson, to establish a practical nursing program.
- ◆ Directed that the National Council of State Boards of Nursing (NCSBN) be notified of willingness to participate in a survey of Kentucky new nurses that do not participate in a transition program prior to 2006, at which time the clinical internship will become a requirement prior to taking the licensure examination. The NCSBN Practice and Education Committee intends to study the outcomes of programs that transition new nurses to practice. A comparison of the results with new nurses who have not been in transition programs will be done with those who participated in a transition program.
- ◆ Adopted, in principle, the "Nurse Licensure Compact Plan for Kentucky" dated October 21, 2004, and directed the staff to provide bi-monthly reports to the Board concerning progress towards implementation of the plan.
- ◆ Directed that a response be sent to the letter dated October 4, 2004, from Bart Baldwin of the Children's Alliance. This letter to state that Board staff will review for possible approval, a medicine administration course to be used in Psychiatric Residential Treatment Facilities submitted by the Children's Alliance pursuant to Kentucky Administrative Regulation 902 KAR 20:320.
- ◆ Directed staff to contact the Cabinet for Health and Family Services about the possibility of amending Kentucky Administrative Regulation 902 KAR 20:320 to clarify section 12(5)(a) concerning approval of medicine administration courses.
- ◆ Directed General Counsel to draft a proposed administrative regulation to set standards for courses for unlicensed administrative personnel to administer medication.
- ◆ Ratified the annual licensure renewal fee of \$40 in 201 KAR 20:240, Fees for applications and for services.
- ◆ Granted Northern Kentucky University Baccalaureate Nursing Program full approval status.
- ◆ Directed that 201 KAR 20:480 be amended to delete Section 2(4) to no longer recognize the Canadian nurse licensure examinations to meet licensure requirements in Kentucky.
- ◆ Repealed the Guideline for Staff Evaluation of High School Equivalency for Licensure Applicants.
- ◆ Approved the Nurse Licensure Compact language and the proposed revisions to KRS Chapter 314 for action by the 2006 Kentucky General Assembly.
- ◆ Directed the implementation of a form letter to be sent, with staff modifications, to evaluators regarding mental health/chemical dependency evaluations requirements.
- ◆ Directed the funding of 64 continuation applicants (\$180,000), 80 new applicants through the 65-point range (\$235,500) and 44 new applicants through the 60-point range to include preference categories of LPN to RN and RN in graduate programs that will graduate in fiscal year 2006 (\$130,500) for a total of 124 new applicants. Total funding for scholarships in 2005-2006 will be \$546,000.
- ◆ Directed the Kentucky Board of Nursing Delegates to vote in favor of supporting the draft resolution language going forward at the NCSBN Delegate Assembly with regard to the NCSBN conducting a job analysis and feasibility study for administering a competency examination for medication assistive personnel.

Kentucky Administrative Regulations

Kentucky Administrative Regulations are enacted to operationalize statutory language and carry force and effect of law. Administrative regulations were revised during FY 04-05 as indicated by the effective date.

201 Kentucky Administrative Regulation 20:

Effective/Revision Date:

.056	Advanced Registered Nurse Practitioner Registration	8/04
.057	Scope & Standards of Practice of ARNPs	8/03
.070	Licensure by Examination	2/05
.085	Licensure Periods	1/05
.095	Inactive Nurse Licensure Status	1/05
.110	Licensure by Endorsement	2/05
.161	Investigation & Disposition of Complaints	8/93
.162	Procedures for Disciplinary Hearings Pursuant to KRS 314.091	10/01
.200	Definitions for Mandatory Continuing Education	7/92
.215	Continuing Competency Requirements	1/05
.220	Provider Approval	8/03
.225	Reinstatement of Licensure	1/05
.230	Renewal of Licenses	1/05
.235	The Prevention of Transmission of HIV & HBV by Nurses	9/93
.240	Fees for Applications & for Services	1/05
.250	Definitions for RN & PN Prelicensure Programs of Nursing	2/93
.260	Organization & Administration Standards for Prelicensure Programs of Nursing	11/00
.270	Programs of Nursing Surveys	11/87
.280	Standards for Prelicensure RN & PN Programs	1/03
.290	Standards for Prelicensure RN & PN Extension Programs	11/87
.300	Standards for Prelicensure Experimental Programs of Nursing	6/85
.310	Faculty for Prelicensure RN & PN Programs	4/03
.320	Standards for Curriculum of Prelicensure RN Programs	8/03
.330	Standards for Curriculum of Prelicensure PN Programs	8/03
.340	Students in Prelicensure RN & PN Programs	6/85
.350	Education Facilities & Resources for Prelicensure RN & PN Programs	6/85
.360	Evaluation of Prelicensure RN & PN Programs	11/87
.370	Applications for Licensure & Registration	1/05
.380	Standards for Refresher Course Approval	11/87
.390	Nursing Incentive Scholarship Fund	10/03
.400	Delegation of Nursing Tasks to Unlicensed Persons	8/03
.410	Expungement of Records	1/03
.411	Sexual Assault Nurse Examiner Program Standards & Credential Requirements	1/05
.420	Determination of Death by a RN Employed by an Ambulance Service	8/99
.430	Discontinuance of Resuscitation by a RN Employed by an Ambulance Service	8/99
.440	Training of RNs Employed by an Ambulance Service in Determination of Death and Discontinuance of Resuscitation	8/99
.450	Alternative Program	8/03
.460	Declaratory Rulings	6/01
.470	Dialysis Technician Credentialing Requirements and Training Program Standards	2/05
.480	Licensure of Graduates of Foreign Nursing Schools	10/03
.490	Licensed Practical Nurse Intravenous Therapy Scope of Practice	9/04

Financial Operations

The Kentucky Board of Nursing (KBN) is a fee supported agency. No general revenue tax dollars are expended by the agency. The revenue balance for FY 04-05 was \$9,404,805 with expenditures totaling \$4,475,400. Funds from the balance are carried forward each year to meet the upcoming fiscal year budget needs. Revenue for FY 04-05 included income from the biannual renewal of RNs. Starting in 2005, revenue from the renewal of LPNs is received on an annual basis. RNs will renew annually starting in 2006. KBN moved from a biennial to an annual renewal period for licensees in an effort to maintain a more consistent and even generation of revenue. The ratio of 3.5: One RN to LPN results in a disproportional yearly revenue generation in a biennial renewal period.

Various KBN publications and informational material were offered for a nominal fee that covered duplicating costs. Some of the publications available for purchase were the KBN History, *Kentucky Nursing Laws*, and KBN administrative regulations. Brochures available at no charge included Continuing Education, Sexual Assault Nurse Examiner Program, Kentucky Alternative Recovery Effort for Nurses Program, Disciplinary Process and Procedures for Nursing Licensure, Assuring Safe Nursing Care in Kentucky, Criminal Convictions, and Nursing Workforce Competency Development Grants. Four editions of the agency newsletter, the *KBN Connection*, were published. The KBN website offered a multitude of information and services.

FEE SCHEDULE

Licensure/Registration

<u>Application Fees</u>	<u>RN</u>	<u>LPN</u>
Endorsement	\$120	\$120
Reinstatement	120	120
Active License Renewal *	105	105
Inactive License Renewal *	75	75
Examination	110	110
Change of Licensure Status	95	95
ARNP Registration	120	
ARNP Reinstatement	120	
ARNP Renewal *	95	
SANE Credential	120	
SANE Reinstatement	120	
SANE Renewal	95	
Duplicate License Letter/Card	35	35
Licensure Certificate	30	30

Verification of Licensure, Registration, or Credential Status:

To Other States	50	50
Dialysis Technician Credential	35	
Online	1 per record	
Individual Written	1 per record/\$10 minimum	
Returned Check	25	
Duplicate Renewal Application	25	
(Due to failure to maintain current address)		

Continuing Education Approval Fees

Initial Provider Approval	\$400
Reinstatement of Provider Approval	400
Renewal of Provider Approval *	150
Offering Approval Via Staff Review	10

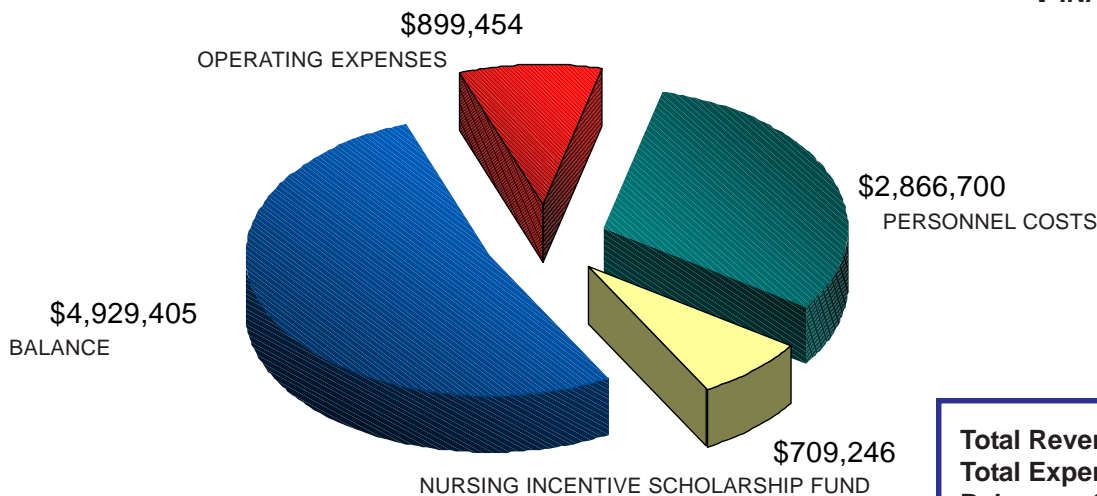
Data Roster Order Request

More than 20,000 Individuals	\$480
5,000-20,000 Individuals	\$360
Less than 5,000 Individuals	\$120

* Issued for a 2-year period

FINANCIAL REPORT

FY 04-05



Total Revenue Balance = \$9,404,805
Total Expenditures = \$4,475,400
Balance = \$4,929,405

Board Administrative Programs

CONTINUING EDUCATION/COMPETENCY

As a mechanism to promote continuing competency, the *Kentucky Nursing Laws* (KRS 314.073) mandate that licensees shall be required to document continuing competency during the immediate past licensure period as prescribed in regulations promulgated by the Board. KBN is the Commonwealth agency legally authorized to approve providers of mandatory CE. During FY 04-05, according to KBN Administrative Regulation 201 KAR 20:215, validation of CE/competency must have included one of the following:

1. Proof of having earned 14 approved contact hours; **OR**
2. A national certification or recertification related to the nurse's practice role (in effect during the whole period or initially earned during the period); **OR**
3. Completion of a nursing research project as principal investigator, coinvestigator, or project director. Must have been qualitative or quantitative in nature, utilized research methodology, and included a summary of the findings; **OR**
4. Publication of a nursing related article; **OR**
5. A professional nursing education presentation that is developed by the presenter, presented to nurses or other health professionals, and evidenced by a program brochure, course syllabi, or a letter from the offering provider identifying the licensee's participation as the presenter of the offering; **OR**
6. Participation as a preceptor for at least one nursing student or new employee undergoing orientation (must be for at least 120 hours, have a one-to-one relationship with student or employee, may precept more than one student during the 120 hours, and preceptorship shall be evidenced by written documentation from the educational institution or preceptor's supervisor); **OR**
7. Proof of earning 7 approved contact hours, **PLUS** a nursing employment evaluation that is satisfactory for continued employment (must be signed by supervisor with the name, address, and phone number of the employer included), and cover at least 6 months of the earning period.
8. College courses, designated by a nursing course number, and courses in physical and social sciences count toward CE hours. One semester credit hour equals 15 contact hours; one quarter credit hour equals 12 contact hours.

Domestic Violence CE Requirement: There was a requirement to earn 3 contact hours of approved domestic violence CE within 3 years of initial licensure (one-time only). This requirement was included as part of the curriculum for nurses graduating from a Kentucky nursing program on or after 5/1998. This requirement applied to licensure by examination, as well as licensure by endorsement from another state.

Pharmacology and Sexual Assault CE Requirements: ARNPs were required to earn 5 contact hours of approved CE in pharmacology. Sexual Assault Nurse Examiners (SANE) credentialed nurses must have earned 5 contact hours of approved sexual assault CE (forensic medicine or domestic violence CE met this requirement). These hours counted as part of the CE requirement for the period in which they were earned.

HIV/AIDS CE Requirement: The 2 hours of mandatory HIV/AIDS CE could be earned within the appropriate earning period. The LPN earning period began 11/1/2001 and goes through 10/31/2011, while the RN period began 11/1/2002 and goes through 10/31/2012. Nurses must maintain proof of earning the required CE for up to 12 years.

Requirement for New Licensees: All licensees were exempt from the CE/competency requirement for the first renewal period of the Kentucky license issued by examination or endorsement. If an individual did not renew the original license, the exemption for the CE/competency was lost and all CE requirements must have been met before the license could be reinstated.

Academic (College Credit Courses) Used to Meet CE Requirements: Certain college credit courses could be used to meet CE requirements. Nursing courses, designated by a nursing course number, and courses in physical and social sciences, such as Psychology, Biology, and Sociology, counted toward CE hours. Prelicensure general education courses, either electives or designated to meet degree requirements, were not acceptable, as well as CPR/BLS, in-service education, or nurse aide training). ACLS or PALS courses were acceptable if they were given by an approved provider. If a college course did not fall within these designated categories, and a nurse felt the course was applicable to his/her nursing practice, the nurse could apply for Individual Review using an application supplied by KBN. There was a fee for this service and the application must have been submitted to KBN by 11/30 of the licensure year.

Post-Renewal Audit Process: The audit process was used to verify CE/competency earning. The random audit required that those persons selected show documented evidence (certificate of attendance, transcript, grade report, employment evaluation, competency validation, etc.) of approved CE/competency earning during the applicable licensure period. Of those licensees randomly selected for the recent RN audit process, 99% demonstrated compliance with the CE requirements. Those not complying were referred for disciplinary action.

CE PROVIDERS BY CATEGORY

Professional Nursing Organizations	10
Related Nursing Organizations	4
Educational Institutions	31
Health Service Agencies	125
Health Related Organizations	28
Commercial Organizations	9
Other	23
Refresher Courses	4
Total	234

Individual Review of CE Offerings 126

INVESTIGATION & DISCIPLINARY ACTION

DISCIPLINARY ACTIONS FY 04-05

<u>TYPE OF DISCIPLINARY ACTION</u>	<u>RN</u>	<u>PN</u>
Licenses Revoked	2	7
Licenses Immediately Temporarily Suspended	27	22
Licenses Suspended	29	27
Licenses Continued on Suspension	16	17
Licenses Suspended/Stayed Followed by Limitation/Probation or Probation	2	3
Licenses Limited/Probated or Probated	29	10
Licenses Voluntarily Surrendered	33	17
Admitted to NCLEX/Licenses Probated/Limited	1	0
Admission to NCLEX or Endorsement Granted/Reprimand	0	1
Licenses Granted Reinstatement	0	1
Licenses Denied Reinstatement	5	3
Licenses Reprimanded	39	8
Licenses Denied	2	1
Decision Appealed	1	
Licenses Cleared of Disciplinary Action	25	
Consent Decrees/Employment	22	
Consent Decrees/Continuing Education	65	
Consent Decrees/Dialysis Technicians	1	
Cease and Desist Notices Issued	5	
Temporary Work Permits Voided	0	

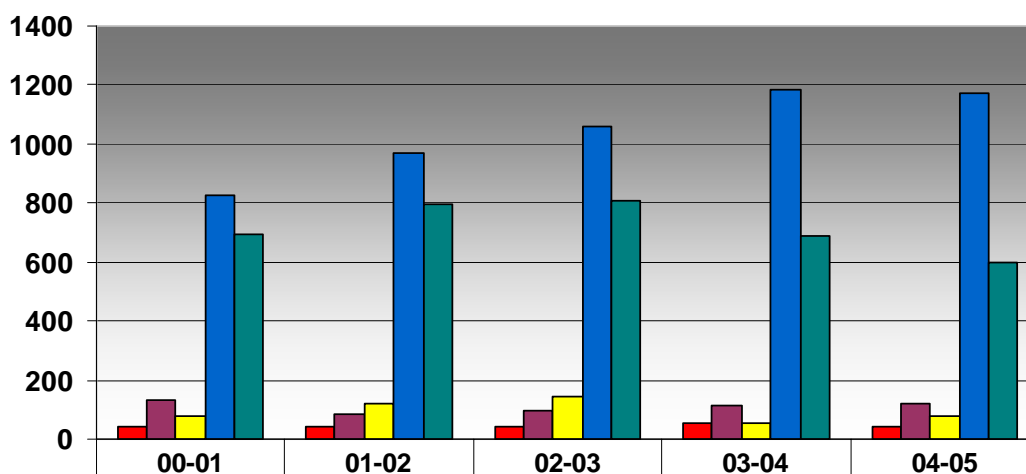
COMPLAINT ACTIVITY

Complaints for Applicants with Conviction Records Reviewed	332
Complaints/Information Filed Away - No Formal Action Deemed Necessary	
Reviewed By:	
Credentials Review Panel	117
Staff Member Review	565
Board Member Review	150
TOTAL NUMBER OF COMPLAINTS RECEIVED	1175
ACTIVE CASES AS OF JUNE 30, 2005	261

The *Kentucky Nursing Laws* provide that the Board of Nursing may "deny, limit, revoke, probate or suspend any license to practice nursing issued by the Board or applied for . . . or to otherwise discipline a licensee or to deny admission to the licensure examination, or to require evidence of evaluation and therapy"

The Board continues its efforts to make the public aware of the investigatory and disciplinary procedures and to emphasize the legal requirement to, and importance of, reporting nurses who are suspected of engaging in unsafe or illegal practices.

SUMMARY OF DISCIPLINARY ACTIONS FY 01-05



■ Decisions	44	39	42	56	43
■ Agreed Orders	130	81	93	116	120
■ Consent Decrees	78	119	144	53	77
■ Complaints Received	825	971	1059	1185	1175
■ Complaints Resolved	697	797	805	691	597

NURSING PRACTICE

KBN interprets the legal scope of nursing practice according to the *Kentucky Nursing Laws* and KBN administrative regulations in the determination of safe and effective nursing care for the citizens of the Commonwealth. In response to inquiries requesting interpretation of the legal scope of nursing practice, KBN has published formal advisory opinion statements as guidelines for safe practice (see the list below), as well as issuing other opinions on nursing practice matters.

During FY 04-05, the Board issued nursing practice advisory opinions addressing: RNs prescribing medication via established protocol following telephone triage; performance of punch biopsies and small skin lesion excisions by RNs; surgical site markings; delegation of triage to paramedics in hospital emergency departments; midclavicular IV catheter placement; delegation of medication (Solu-Cortef) administration by unlicensed personnel in school settings; and administration of medication via a continuous infusion catheter for maintenance of a peripheral nerve block.

KBN ADVISORY OPINION STATEMENTS

- #03 Roles of Nurses in Intravenous Therapy Practice
- #04 Roles of RNs and ARNPs in the Administration of Medication per Intraspinal Routes
- #05 The Performance of Advanced Life Support Procedures by RNs
- #08 Role of the RN First Assistant
- #09 The Performance of Wound Debridement by Nurses
- #10 Roles of Nurses in the Care of Intrapartum Patients
- #11 Roles of Nurses in the Insertion and Removal of a Gastric Tube and in the Reinsertion of a Gastrostomy Tube
- #13 Roles of RNs in Psychiatric and Mental Health Nursing Practice
- #14 Roles of Nurses in the Implementation of Patient Care Orders
- #15 Roles of Nurses in the Supervision and Delegation of Nursing Acts to Unlicensed Personnel
- #16 Roles of Nurses in the Administration of Medication via Various Routes
- #17 Roles of Nurses in the Administration of "PRN" Medication
- #18 Employment of Nursing Students as Nursing Personnel Using Either an Academic or a "Nurse Extern" Service Model
- #19 Responsibility and Accountability of Nurses for Patient Care Assignments and Nursing Care Delivery
- #20 Roles of RNs in Invasive Cardiac Procedures
- #21 Roles of Nurses and Technicians in Dialysis
- #22 Roles of Nurses who Provide "Private Duty" Nursing
- #23 The Application and Removal of a Cast or Splint by Nurses
- #24 Patient Abandonment by Nurses
- #25 Peripheral Insertion of Central, Midclavicular and Midline Intravenous Catheters by Nurses
- #26 Roles of Nurses in the Delivery of Prehospital Emergency Medical Care via Ambulance Services
- #27 Components of LPN Practice
- #28 Roles of Nurses and Unlicensed Nursing Personnel in Endoscopic Procedures
- #29 Cardiopulmonary/Respiratory Nursing Practice
- #30 School Nursing Practice
- #31 Removal of Femoral Access Devices (Sheaths) and Use of Mechanical Compression Devices by RNs
- #32 Intravenous Administration of Medications for Sedation by Nurses
- #33 Roles of Nurses in the Delegation of Tasks to Paramedics in a Hospital Emergency Department

Note: Each of the advisory opinion statements listed above were revised during FY 04-05. The *Scope of Practice Determination Guidelines*, a decision-making tool for nurses, was also revised.

The following advisory opinion statements have been removed from current publication and archived as these documents address practice matters that have been incorporated into the common practice of nursing:

- #01 Role of the RN/LPN in Spinal Screening for Detection of Common Abnormal/Curvatures of the Spine
- #02 Role of the ARNP, RN, and LPN in Gynecological Cancer Detection
- #06 The Performance of Arterial Puncture by RNs
- #07 Roles of Nurses in Superficial Wound Closure

NURSING INCENTIVE SCHOLARSHIP FUND

The Nursing Incentive Scholarship Fund (NISF) provides scholarships to Kentucky residents for attending approved prelicensure nursing programs (registered nurse or practical nurse) or graduate nursing programs. Scholarship recipients must work as nurses in Kentucky for one year for each academic year funded. To be eligible for consideration, an applicant must have been admitted to a nursing program. Applications for scholarships are accepted from January 1 to June 1. The amount of each scholarship is \$3,000 per year, or \$1,500 per semester. If a recipient does not complete the nursing program within the time frame specified by the program, or if the recipient does not complete the required employment, then the recipient is required to repay any NISF monies awarded, plus accrued interest.

The Nursing Incentive Scholarship Grant Review Committee was created to accept grant proposals for workforce competency development, which is defined as organized, structured or formal activity designed to improve the ability of nurses to meet the health care needs of the citizens of Kentucky. The nursing workforce is defined as actual and/or potential licensed nursing population. The Board directed that no consideration be given to any workforce development grant proposals until there is resolution of the current Kentucky budget issues.

KENTUCKY BOARD OF NURSING NURSING INCENTIVE SCHOLARSHIP FUND SUMMARY: FY 01-05					
APPLICATION DATA	FY 00-01	FY 01-02	FY 02-03	FY 03-04	FY 04-05
Apps Processed	648	491	679	520	795
Apps Complete/Not Funded	498	274	393	426	487
Apps Incomplete/Not Funded	18	30	64	59	44
Apps Approved/Funded:	132	255	149	94	242
Initial	56	37	76	32	221
Continuation	76	218	73	62	21
Recipients Completed (627)	6	110	219	310	78

NISF AWARD DATA	FY 00-01	FY 01-02	FY 02-03	FY 03-04	FY 04-05
NISF Fund Balance *	\$566,935	\$862,848	\$922,910	\$1,059,699	\$685,590
NISF Awards Granted:	\$234,000	\$430,000	\$409,500	\$259,500	\$690,000
Initial	\$97,000	\$371,000	\$205,500	\$175,500	\$634,500
Continuation	\$137,000	\$59,000	\$204,000	\$84,000	\$55,500

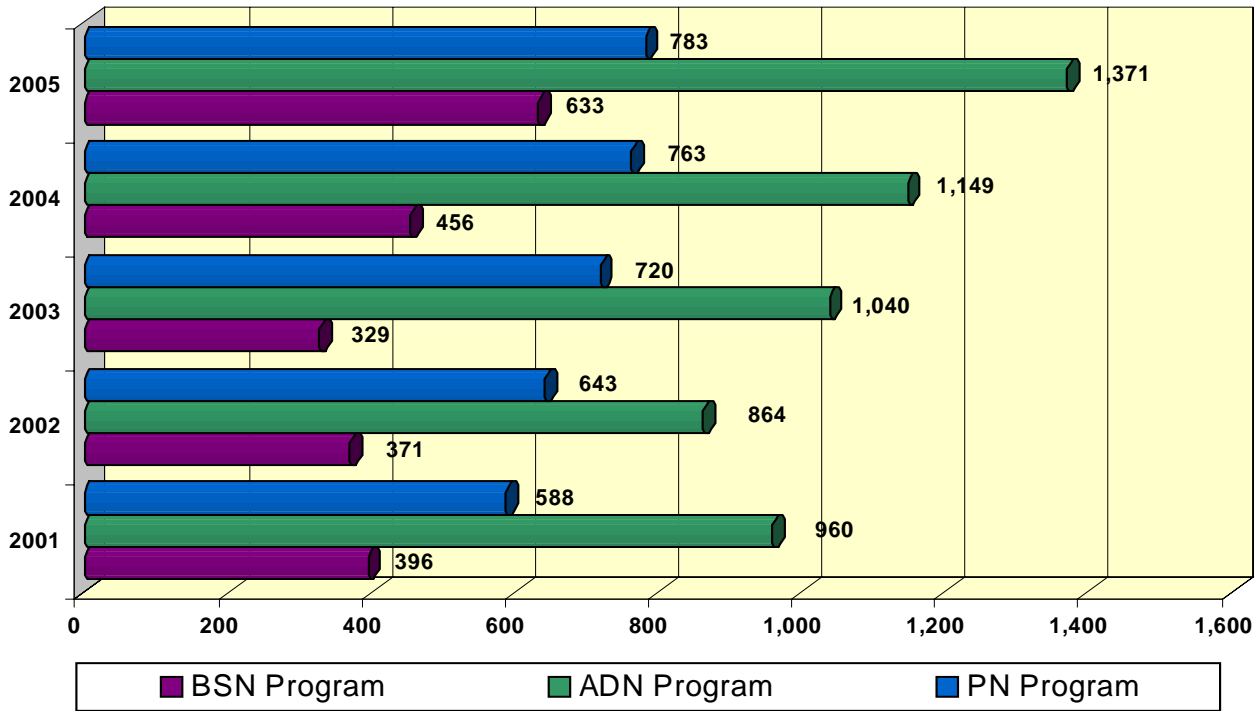
* NISF Fund Balance reflects the amount at the end of each fiscal year that will be available during the next fiscal year.

Note: The amount of awards varies each fiscal year due to cancellations, deferments, and defaults.

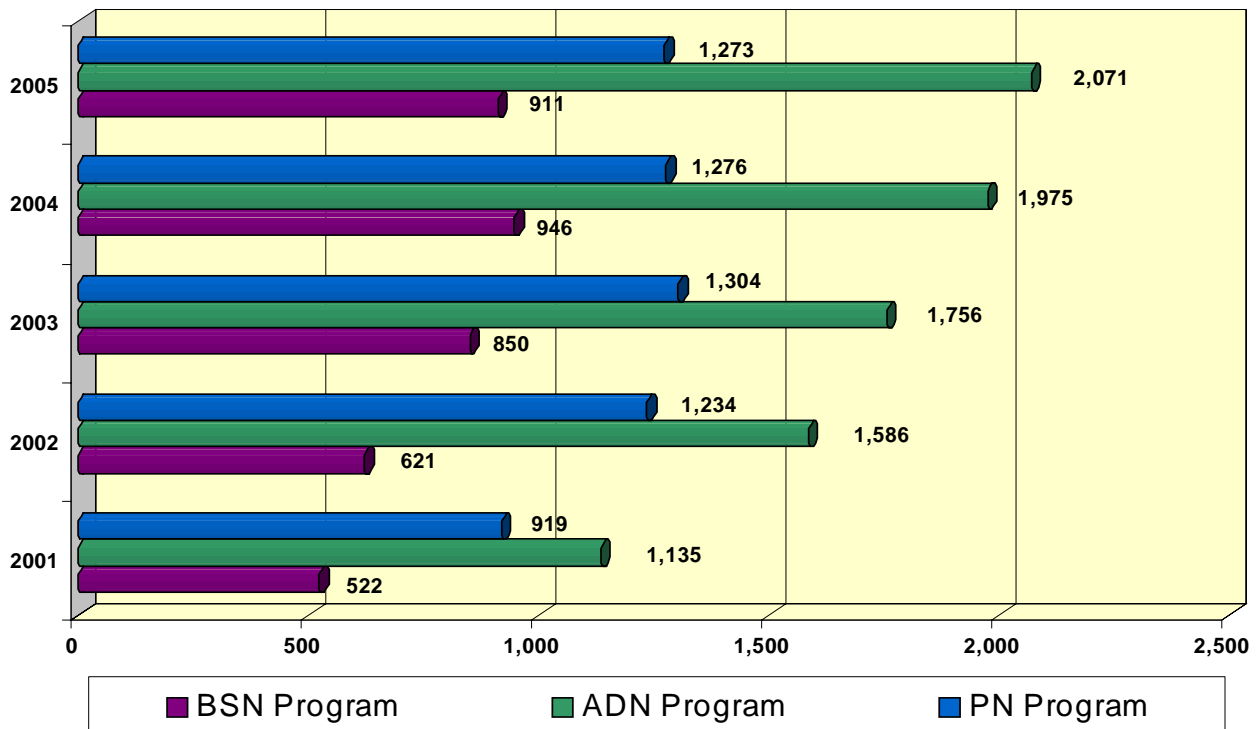
NURSING EDUCATION

The Kentucky Board of Nursing is the legally authorized body in the Commonwealth to approve programs of nursing preparing persons for eligibility for licensure as nurses. Through the provisions of the *Kentucky Nursing Laws* and applicable Kentucky administrative regulations, the Board prescribes standards for educational institutions offering programs preparing candidates for licensure as nurses. As of June 30, 2005, there were a total of 12 baccalaureate nursing (BSN) programs, 24 associate degree (ADN) programs, and 20 practical nursing (PN) programs approved by KBN.

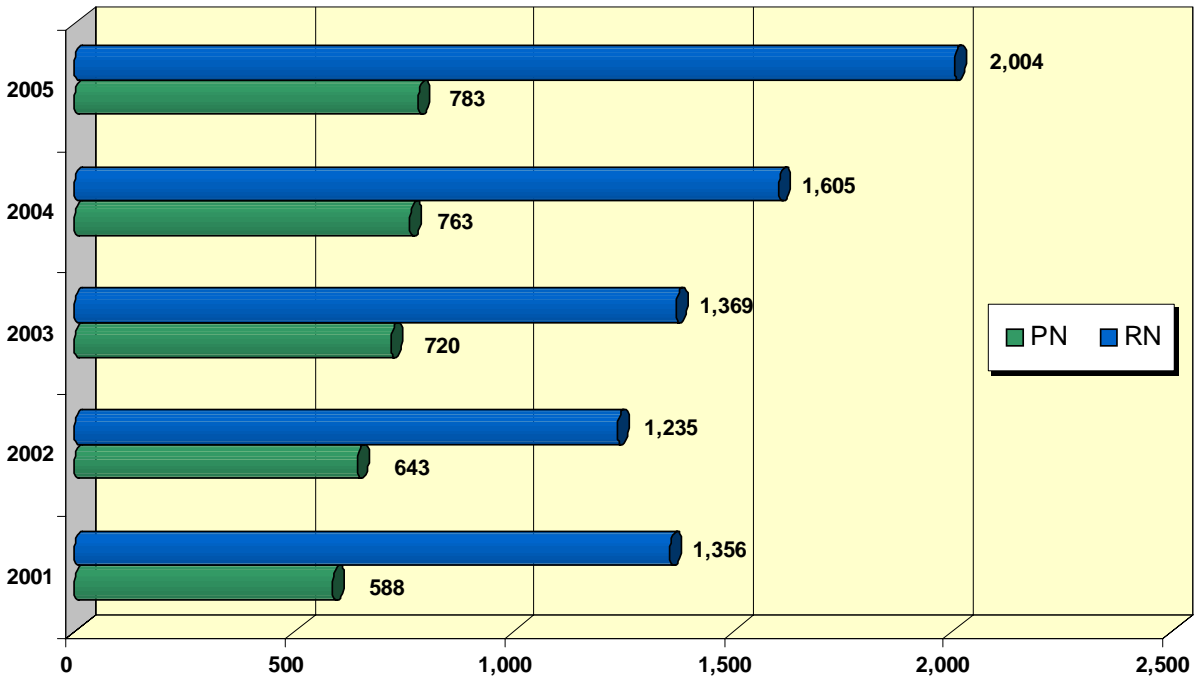
PROGRAM OF NURSING GRADUATES: FY 01-05



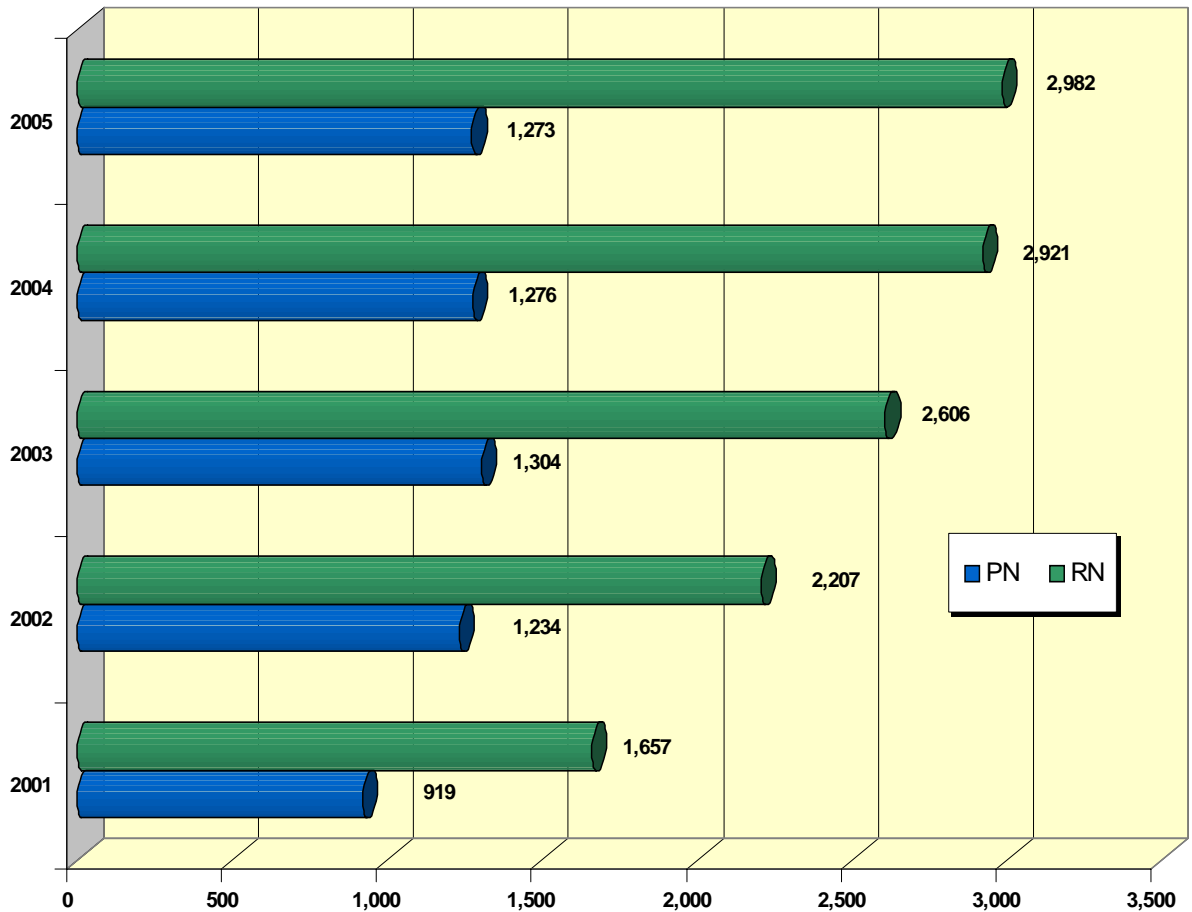
PROGRAM OF NURSING ADMISSIONS: FY 01-05



REGISTERED NURSE & PRACTICAL NURSE GRADUATES: FY 01-05



REGISTERED NURSE & PRACTICAL NURSE ADMISSIONS: FY 01-05



**KENTUCKY BOARD OF NURSING
NCLEX PASS RATE & APPROVAL STATUS REPORT: FY 2001-2005
BACCALAUREATE DEGREE PROGRAMS OF NURSING**

BSN Programs (12 Total)	Pass Rate					Approval Status
	2001	2002	2003	2004	2005	2005
Bellarmino University	88%	100%	100%	100%	97%	Full
Berea College	86%	94%	71%	93%	91%	Full
Eastern Kentucky University	86%	96%	95%	100%	92%	Full
Kentucky Christian University	N/A	N/A	N/A	N/A	75%	Full
Morehead State University	86%	85%	87%	64%	95%	Full
Murray State University	100%	92%	81%	100%	88%	Full
Northern Kentucky University	N/A	N/A	N/A	75%	90%	Full
Spalding University	73%	93%	74%	97%	91%	Full
Thomas More College	86%	86%	86%	88%	50%	Full
University of Kentucky	96%	97%	95%	94%	98%	Full
University of Louisville	85%	96%	88%	92%	89%	Full
Western Kentucky University	89%	100%	78%	93%	90%	Full

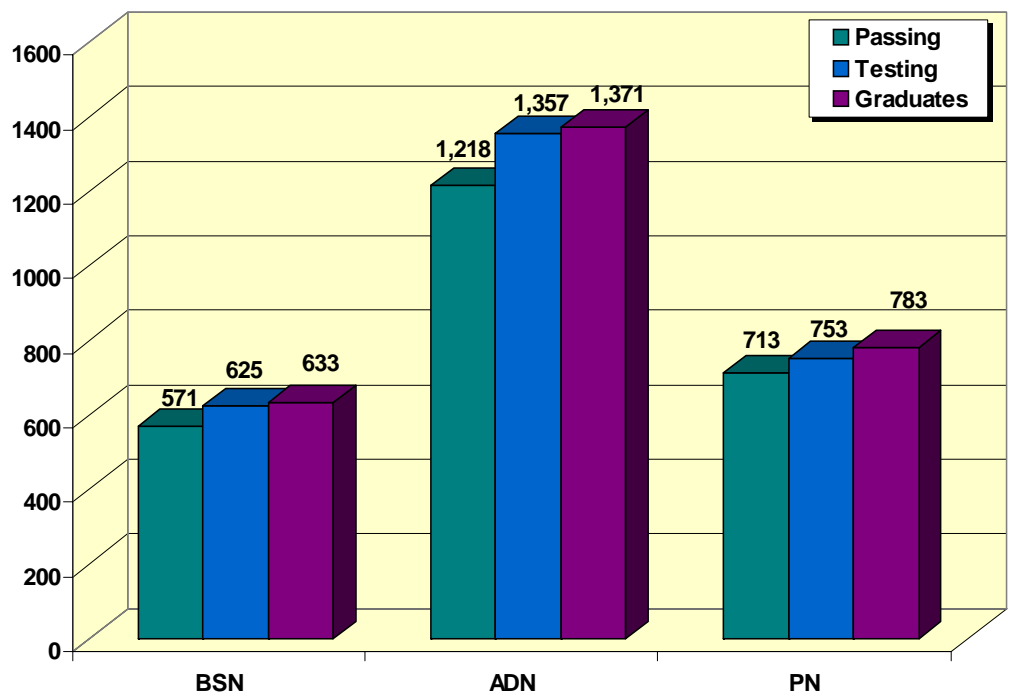
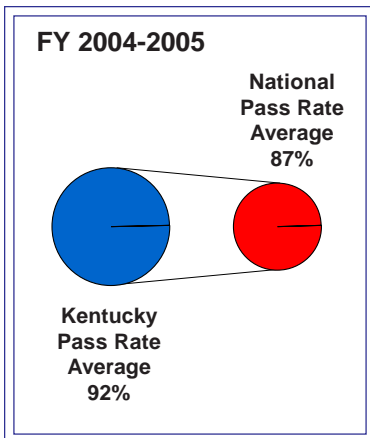
**KENTUCKY BOARD OF NURSING
NCLEX PASS RATE & APPROVAL STATUS REPORT: FY 2001-2005
ASSOCIATE DEGREE PROGRAMS OF NURSING**

ADN Programs (24 Total)	Pass Rate					Approval Status
	2001	2002	2003	2004	2005	2005
Ashland Community & Tech College	89%	87%	88%	92%	94%	Full
Big Sandy Community & Tech College	95%	56%	87%	94%	90%	Full
Bluegrass Community & Tech College	93%	98%	95%	91%	97%	Full
Eastern Kentucky University	87%	98%	94%	91%	93%	Full
Elizabethtown Community & Tech College	90%	100%	98%	95%	94%	Full
Hazard Community & Tech College	91%	77%	100%	82%	88%	Full
Henderson Community College	97%	91%	97%	100%	88%	Full
Hopkinsville Community College	97%	100%	93%	98%	93%	Full
Jefferson Community & Tech College	92%	96%	100%	96%	97%	Full
Kentucky State University	84%	81%	88%	100%	94%	Full
Lincoln Memorial University - Corbin	91%	93%	73%	94%	83%	Full
Madisonville Community College	96%	94%	100%	91%	91%	Full
Maysville Community & Tech College	94%	100%	91%	93%	92%	Full
Midway College	96%	91%	87%	80%	89%	Full
Morehead State University	100%	93%	86%	85%	92%	Full
Northern Kentucky University	91%	94%	88%	89%	93%	Full
Owensboro Community & Tech College	100%	95%	100%	100%	75%	Full
Pikeville College	95%	100%	100%	91%	100%	Full
Somerset Community College	92%	97%	100%	100%	100%	Full
Southeast KY Community & Tech College	93%	93%	94%	86%	95%	Full
Spencerian College	N/A	N/A	80%	77%	76%	Conditional
St. Catherine College	85%	N/A	100%	100%	100%	Full
West KY Community & Tech College	88%	93%	93%	93%	93%	Full
Western Kentucky University	89%	86%	89%	86%	76%	Full

**KENTUCKY BOARD OF NURSING
NCLEX PASS RATE & APPROVAL STATUS REPORT: FY 2001-2005
PROGRAMS OF PRACTICAL NURSING**

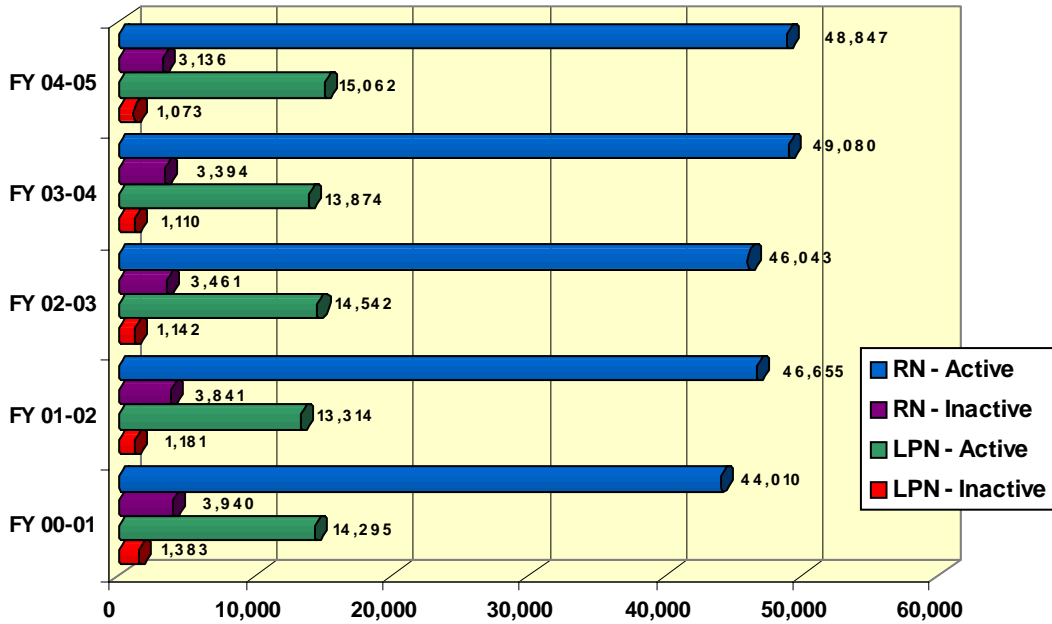
PN Programs (20 Total)	Pass Rate					Approval Status
	2001	2002	2003	2004	2005	2005
Ashland Community & Tech College	67%	90%	87%	93%	94%	Full
Big Sandy Community & Tech College	100%	84%	90%	82%	94%	Full
Bluegrass Comm/Tech College - Danville	92%	86%	90%	85%	91%	Full
Bluegrass Comm/Tech College - Leestown	78%	100%	97%	95%	94%	Full
Bowling Green Tech College - Glasgow	100%	96%	95%	84%	90%	Full
Elizabethtown Community & Tech College	90%	94%	100%	100%	100%	Full
Galen College of Nursing	82%	96%	92%	98%	96%	Full
Gateway Community & Tech College	91%	89%	81%	81%	88%	Conditional
Hazard Community & Technical College	98%	94%	89%	88%	94%	Full
Hopkinsville Community College	N/A	100%	100%	100%	95%	Full
Jefferson Community & Tech College	87%	97%	89%	100%	100%	Full
Laurel Technical College	N/A	92%	89%	N/A	92%	Full
Madisonville Community College	91%	88%	97%	84%	95%	Full
Maysville Community & Tech College	N/A	71%	94%	83%	100%	Full
Maysville Comm/Tech College - Rowan	94%	100%	N/A	93%	100%	Full
Owensboro Community & Tech College	93%	92%	N/A	100%	100%	Full
Somerset Technical College	95%	86%	98%	100%	95%	Full
Southeast KY Community & Tech College	81%	75%	92%	97%	94%	Full
Spencerian College	85%	80%	72%	82%	96%	Conditional
West KY Community & Tech College	88%	100%	100%	100%	97%	Full

FY 2004-2005 SUMMARY

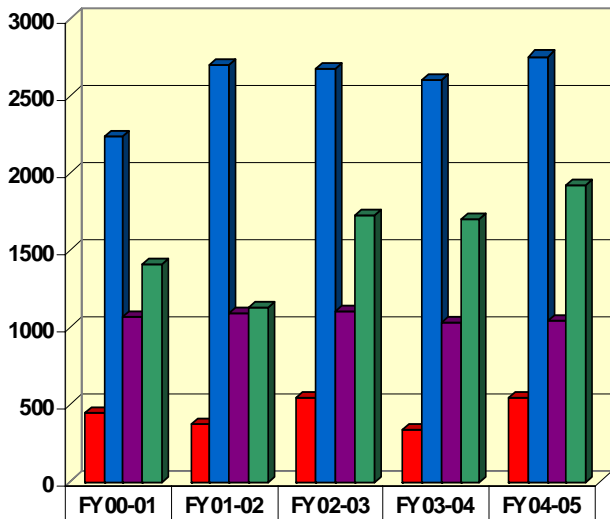


LICENSURE & REGISTRATION STATISTICS

REGISTERED NURSE & PRACTICAL NURSE LICENSEES FY 01-05 COMPARATIVE SUMMARY

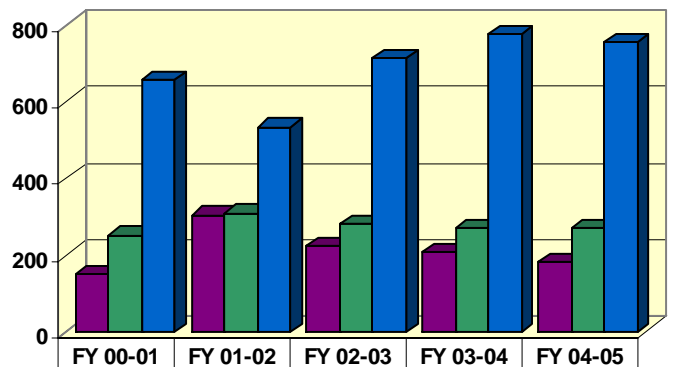


REGISTERED NURSE LICENSURE BY ENDORSEMENT, REINSTATEMENT, EXAMINATION & VERIFICATION TO OTHER BOARDS OF NURSING



The verification count includes a combination of RNs and LPNs, consequently, verifications are no longer included on the PN chart shown below.

PRACTICAL NURSE LICENSURE BY ENDORSEMENT, REINSTATEMENT & EXAMINATION

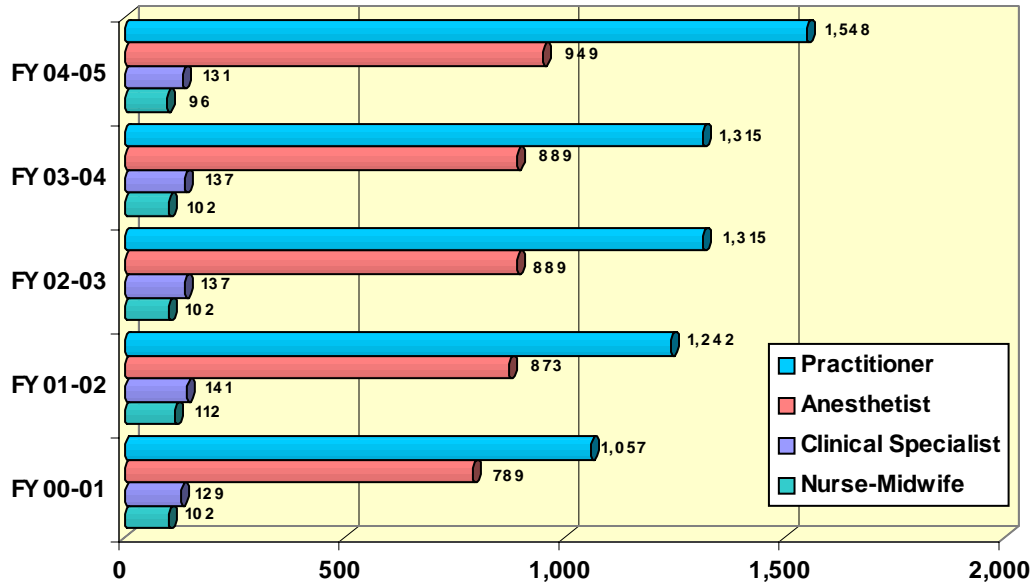


	FY 00-01	FY 01-02	FY 02-03	FY 03-04	FY 04-05
Reinstatement	450	372	539	332	547
Verification	2,242	2,700	2,670	2,600	2,754
Endorsement	1,072	1,097	1,100	1,035	1,046
Examination	1,405	1,134	1,726	1,696	1,919

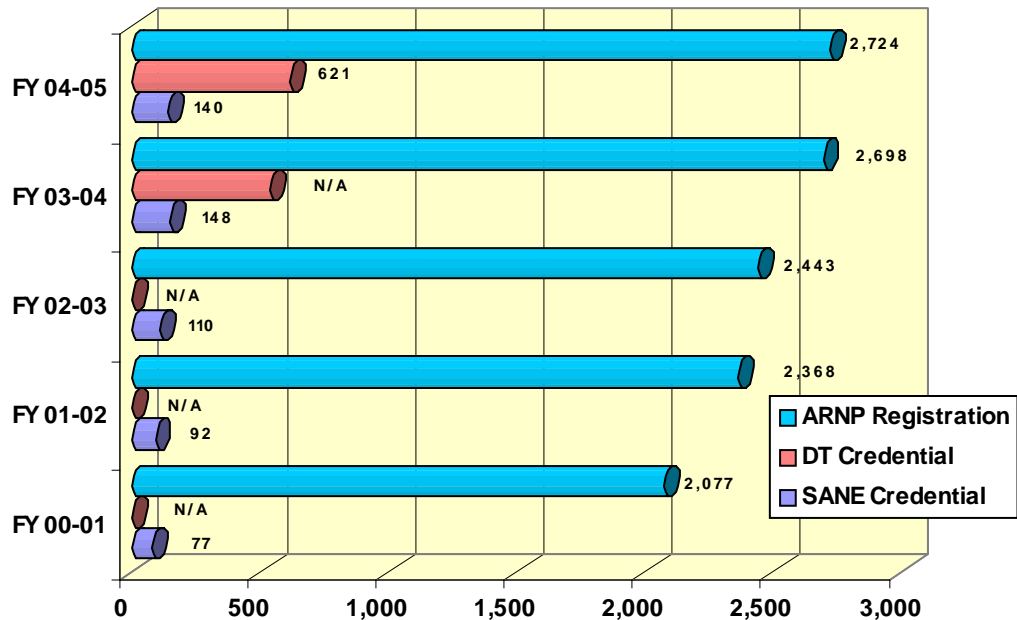
	FY 00-01	FY 01-02	FY 02-03	FY 03-04	FY 04-05
Reinstatement	149	303	223	207	181
Endorsement	251	309	279	269	268
Examination	654	533	714	775	754

LICENSURE STATISTICS (CONTINUED)

ADVANCED REGISTERED NURSE PRACTITIONERS FY 01-05 COMPARATIVE SUMMARY BY DESIGNATION

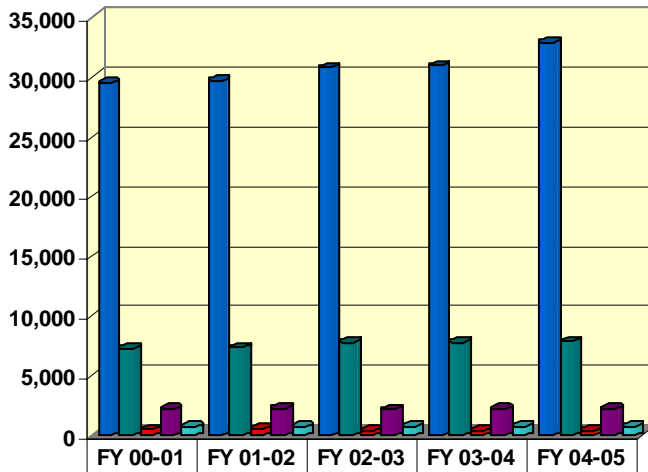


ADVANCED REGISTERED NURSE PRACTITIONER (ARNP) REGISTRATIONS DIALYSIS TECHNICIAN (DT) CREDENTIALS SEXUAL ASSAULT NURSE EXAMINER (SANE) CREDENTIALS FY 01-05 COMPARATIVE SUMMARY



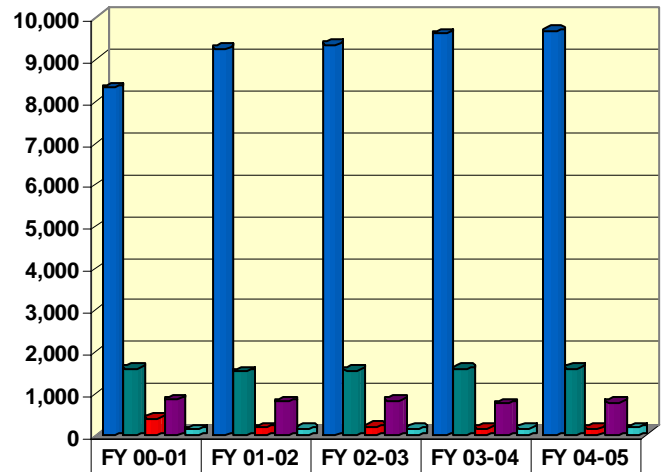
LICENSURE STATISTICS (CONTINUED)

SUMMARY OF REGISTERED NURSES BY EMPLOYMENT STATUS FY 01-05



Full Time	29,429	29,631	30,728	30,893	32,835
Part Time	7,231	7,282	7,717	7,763	7,815
Other Field	464	501	321	334	405
Unemployed	2,152	2,214	2,111	2,169	2,185
Retired	635	647	708	711	738

SUMMARY OF PRACTICAL NURSES BY EMPLOYMENT STATUS FY 01-05



Full Time	8,303	9,229	9,329	9,591	9,654
Part Time	1,585	1,517	1,540	1,569	1,588
Other Field	395	167	184	150	151
Unemployed	850	794	828	752	786
Retired	123	135	141	164	168

AUTOMATED LICENSURE VERIFICATIONS FY 01-05

