



Kentucky Board of Nursing Annual Report 2010-2011

KENTUCKY BOARD OF NURSING

312 Whittington Pkwy., Suite 300 · Louisville, KY 40222-5172
800-305-2042 or 502-429-3300 · www.kbn.ky.gov

BOARD MEMBERS

*Carol A. Komara, RN, President
Lexington*

*Sally Baxter, RN, Vice-President
Maysville*

*Gail I. Wise, RN, Secretary
Mays Lick*

*Sonia Rudolph, APRN, Financial Officer
Louisville*

Patricia Birchfield, APRN (Lexington)

Christe S. Coe, APRN (Louisville)

Jamie D. Daniel, LPN (Hustonville)

Ann Fultz, LPN (Ashland)

Jann B. Gilliam, Citizen-at-Large (Annville)

Cheryl Hickman, RN (Pikeville)

*Jimmy T. Isenberg, RN (Glasgow)
Through February 2011*

Susan Mudd, RN (Bardstown)

Elizabeth Partin, APRN (Columbia)

*Anita F. Simmons, Citizen-at-Large
(Hopkinsville)*

Natalie J. Tate, LPN (Paducah)

Anne H. Veno, RN (Crestwood)

COMMITTEE MEETINGS

<i>Education Committee</i>	<i>Consumer Protection Committee</i>
<i>Sep. 16, 2010</i>	<i>Sep. 16, 2010</i>
<i>Nov. 18, 2010</i>	<i>Nov. 18, 2010</i>
<i>Jan. 6, 2011</i>	<i>Mar. 10, 2011</i>
<i>Mar. 17, 2011</i>	<i>May 19, 2011</i>
<i>May 19, 2011</i>	

<i>Governance Committee</i>	<i>Practice Committee</i>
<i>Sep. 16, 2010</i>	<i>Sep. 17, 2010</i>
<i>Nov. 18, 2010</i>	<i>Nov. 19, 2010</i>
<i>Jan. 6, 2011</i>	<i>Jan. 7, 2011</i>
<i>Mar. 17, 2011</i>	<i>Mar. 18, 2011</i>
<i>May 19, 2011</i>	<i>May 20, 2011</i>

BOARD MEETINGS

*October 14-15, 2010
Regular Meeting*

*December 9, 2010
Regular Meeting*

*February 11, 2011
Regular Meeting*

*April 14-15, 2011
Regular Meeting*

*June 16-17, 2011
Annual Meeting*

BOARD OFFICERS

ELECTED APRIL 2010
*President: Carol Komara
Vice-President: Sally Baxter
Secretary: Gail I. Wise
Financial O.: Sonia Rudolph*

2009-2010
*Jimmy T. Isenberg
Patricia Birchfield
Gail I. Wise
Sonia Rudolph*

2008-2009
*Jimmy T. Isenberg
Sally Baxter
Carol Komara
Anne H. Veno*

KENTUCKY BOARD OF NURSING

MISSION

The Kentucky Board of Nursing protects well-being of the public by development and enforcement of state laws governing the safe practice of nursing, nursing education, and credentialing.

CORE VALUES

In order to protect the public, we are committed to:

EXCELLENCE

Excellence and quality by delivering consistent, effective, and efficient services.

INTEGRITY

Honesty, fairness, and objectivity in the development and enforcement of laws and regulations.

RESPONSIVENESS

Taking initiative, communicating openly, and demonstrating care and concern in all endeavors.

COLLABORATION

Working in a cooperative spirit while maintaining respect for all individuals.

VISION

We aspire to:

DELIVER

benchmark-quality services in healthcare regulation.

MEET

the challenges of a dynamic and ever-changing healthcare environment.

HAVE

an organizational environment that fosters creativity, innovation, and outstanding leadership.

HAVE

a committed and appropriately compensated Board/staff who have exceptional knowledge and skills.

ACHIEVE

integration of regulatory efforts affecting the health of the public.

HAVE

effective and efficient board functions.

GOAL 1

Sound defensible, regulatory practices that protect the public through a Just Culture model.

- *Create opportunities for interagency policy development and collaboration.*
- *Continue enhancements for the disciplinary action processes.*
- *Continue enhancements for the alternative to disciplinary action processes.*
- *Increase public awareness and understanding of the role and purpose of the Board of Nursing.*
- *Increase the public's participation in regulatory decision making.*
- *Continue to plan and evaluate the nursing education requirements, practice issues, and competency determination.*
- *Regulate nurses and persons who provide nursing-related acts.*

GOAL 2

Efficient delivery of services that meet the needs of consumers and regulated entities.

- *Maintain an organizational structure that promotes effective utilization of agency resources.*
- *Enhance communications and positive image of KBN.*

- *Continue to implement workflow redesign for selected agency services.*
- *Monitor mutual recognition initiatives.*
- *Continue electronic enhancements to licensure and credentialing processes.*

GOAL 3

Optimal use of technology that supports agency services.

- *Plan for implementation of the agency Information Resources Plan.*
- *Improve utilization of communications technology.*
- *Explore new technologies to enhance agency and board functions.*

GOAL 4

An organizational culture that promotes job satisfaction and career development.

- *Increase staff involvement in agency planning and policy implementation.*
- *Enhance orientation and development programs for the members of the Board, committees, and councils.*
- *Enhance means to increase service recognition of volunteers, Board and staff members.*
- *Monitor and maintain appropriate compensation for employees and Board members.*
- *Increase understanding of job functions throughout the agency.*

BOARD OF NURSING COMPOSITION, STRUCTURE & OPERATIONS

BOARD ACTIVITIES

All meetings of the Board and its committees and councils were held in open session as required by the Kentucky open meetings law. The commitment of the members of KBN and the dedication of its staff continued in unabated fashion. Appreciation for this service by KBN staff and members was expressed through the recognition programs of the agency and executive branch of state government. Retiring Board member for FY 2009-10 were Jimmy Isenberg, RN and Deborah Phillips, LPN. Reappointed Board members were Christe Coe, APRN and Susan Mudd, RN. Newly appointed Board member was Natalie Tate, LPN.

COMMITTEES, COUNCILS, GROUPS, PANELS

ADVANCED PRACTICE REGISTERED NURSE COUNCIL

Related organizations nominate representatives for membership on the APRN Council, as an advisory body to KBN. The council advises and recommends practice standards regarding the performance of acts relative to nurse anesthesia, nurse-midwifery, nurse practitioner, and clinical nurse specialist practice.

Chair: Patricia Birchfield, APRN
Jessica L. Estes, APRN, KNA
Wendy Fletcher, APRN, KCNP/NM
Marilyn Osborne, APRN-M, KCNP/NM
Kristin V. Paul, APRN, KNA

Anne Policastri, RPh, KBPh
Leandra Price, APRN-CNS, KNA
David Schwytzer, APRN-A, KyANA
Russell L. Travis, MD, KBML
Staff Coord: Sharon Mercer, RN

CONSUMER PROTECTION COMMITTEE*

The Consumer Protection Committee considers those matters related to investigation and disciplinary processes and preparation of hearing panel members.

Chair: Jann Gilliam, C-a-L
Susan Mudd, RN
Sonia Rudolph, APRN

Anita Simmons, C-a-L
Natalie Tate, LPN
Staff Coord: Sandra Johanson, RN

CONTROLLED SUBSTANCES FORMULARY DEVELOPMENT COMMITTEE

The committee shall serve in an advisory capacity to the Kentucky Board of Nursing in the recommendation of an administrative regulation governing limitations, if any, for specific controlled substances prescribed by APRNs.

Co-Chair: Elizabeth Partin, APRN
Co-Chair: Donald Swikert, MD
Staff Coord: Sharon Eli Mercer, RN

Venda Kelley, APRN
Jeffrey Mills, PharmD, KBP
John R. White, MD, KBML

CREDENTIALS REVIEW PANEL

The Credentials Review Panel considers those matters related to licensure and registration credentials and disciplinary investigation and action not otherwise covered by applicable laws and/or guidelines set by KBN.

Chair: Cheryl Hickman, RN
Patricia Birchfield, APRN
Staff Coord: Sandra Johanson, RN

Jamie Daniel, LPN
Elizabeth Partin, APRN

DIALYSIS TECHNICIAN ADVISORY COUNCIL

The Dialysis Technician Advisory Council advises KBN regarding qualifications, standards for training, competency determination of dialysis technicians, and all other matters related to dialysis technicians.

Chair: Ann Fultz, LPN
Kimberly Dawn Bailey, DT
Robyn Denton, RN
Latoyia Garnett, DT

Mellisia McCloud, DT
Ann Boone Rich, RN
Kathy Roberts, RN
Staff Coord: Sharon Mercer, RN

EDUCATION COMMITTEE*

The Education Committee considers those matters related to mandatory continuing education and prelicensure nursing education in the Commonwealth.

Chair: Gail I. Wise, RN
Ann Fultz, LPN
Jimmy Isenberg, RN
(through Feb. 2011)

Carol Komara, RN
Susan Mudd, RN
Anne H. Veno, RN
Staff Coord: Patty Spurr, RN

GOVERNANCE PANEL

The Governance Panel is responsible for reviewing Board guidelines, structure, operations, and Board member development. It submits recommendations to KBN on these and related matters.

Chair: Sally Baxter, RN
Jann Gilliam, C-a-L
Anita Simmons, C-a-L

Natalie Tate, LPN
Anne H. Veno, RN
Staff Coord: Nathan Goldman, JD

KBN CONNECTION EDITORIAL PANEL

The KBN Connection Editorial Panel considers those matters related to planning for the preparation and publication of the official KBN magazine, published 4 times in FY 07-08.

Chair: Anita Simmons, C-a-L
Natalie Tate, LPN
Staff Coord: Sue Derouen, RN

Ann Tino, RN, Staff
Gail Wise, RN

NCSBN DELEGATES

Carol Komara, RN
Gail I. Wise, RN

Charlotte Beason, RN, Alternate Delegate
Elizabeth Partin, APRN, Alternate Delegate

PRACTICE COMMITTEE*

The Practice Committee considers those matters related to the interpretation of the legal scope of nursing practice as defined in Kentucky Nursing Laws and KBN administrative regulations. Committee deliberations may include review of other relevant statutes and regulations as necessary.

Chair: Elizabeth Partin, APRN
Sally Baxter, RN
Patricia Birchfield, APRN
Christe Coe, APRN
Staff Coord: Sharon Mercer, RN

Jamie Daniel, LPN
Jann Gilliam, C-a-L
Cheryl Hickman, RN
Sonia Rudolph, APRN

UAP MEDICATIONS TASK FORCE

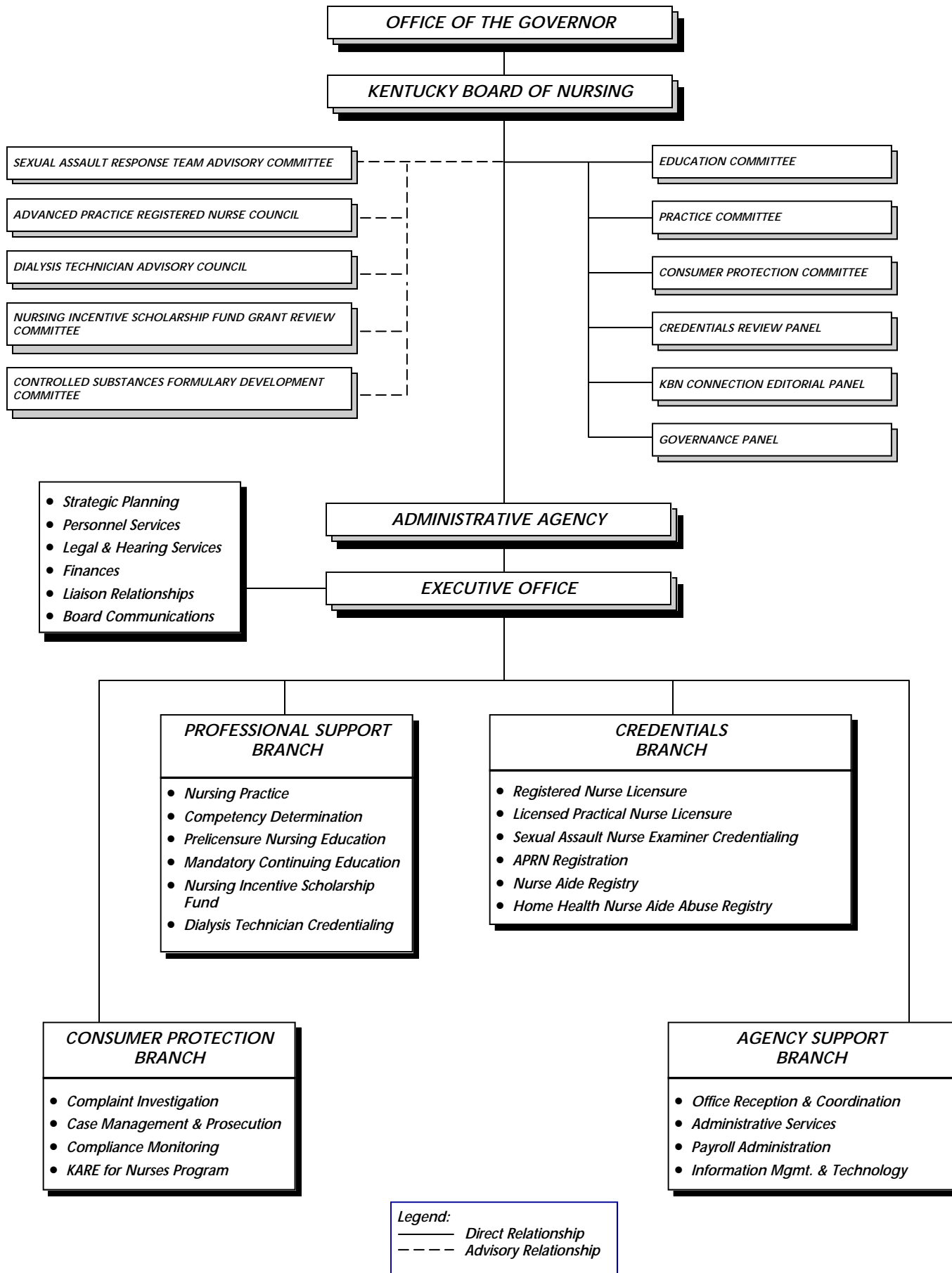
The UAP Task Force exists to identify and explore issues surrounding the administration of medication by unlicensed personnel; provide overall direction and guidance to subcommittee(s) composed of a variety of individuals with knowledge and expertise regarding the administration of medication by unlicensed personnel; and advise the KBN Practice Committee on future utilization and oversight of unlicensed personnel administering medication.

Chair: Jimmy T. Isenberg, RN
(through Feb. 2011)

Staff Coord: Sharon Mercer, RN

* KBN President and Executive Director are Ex-Officio Members

REGULATION OF NURSES, AND NURSING EDUCATION AND PRACTICE



HIGHLIGHTS OF BOARD ACTIVITIES: FY 10-11

Advisory Opinion Statements

- *Revised AOS #9, The Performance of Wound Debridement by Nurses*
- *Revised AOS #14, Roles of Nurses in the Implementation of Patient Care Orders*
- *Revised AOS #22, Roles of Nurses Who Provide "Private Duty" Nursing*
- *Revised AOS #35, Cosmetic and Dermatological Procedures by Nurses*
- *Revised AOS #10, Roles of Nurses in the Care of Intrapartum Patients*
- *Revised AOS #34, Roles of Nurses in Maintaining Confidentiality of Patient Information*
- *Revised AOS #27, Components of Licensed Practical Nursing Practice*
- *Reviewed AOS #19, Responsibility & Accountability of Nurses for Patient Care Assignments & Nursing Care Delivery*
- *Reviewed AOS #28, Roles of Nurses and Unlicensed Nursing Personnel in Endoscopic Procedures*
- *Reviewed AOS #24, Advisory Opinion Statement on Patient Abandonment by Nurses*
- *Reviewed AOS #25, Peripheral Insertion of Central and Midline Intravenous Catheters by Nurses*

New Nursing Practice Advisory Opinions

Issued three (3) nursing practice advisory opinions addressing:

- *Scope of Licensed Practical Nursing Practice—administration of local anesthesia in a dental setting*
- *Scope of Licensed Practical Nursing Practice—role in advanced life support*
- *Advanced Practice Registered Nursing Practice—delegate to RN or LPN the handing of a sample medication to a patient*

Nurse Incentive Scholarship Fund

- *Nurse Incentive Scholarship Fund directed the funding of 23 continuation applicants (\$60,000), and 133 new applicants through the 60-point range (\$390,000). Total funding for 2010-2011 will be \$450,000.*

Applications and Proposals for Advanced Practice Programs of Nursing and Doctorate of Nursing Practice Programs

- *Directed that the following programs be granted Initial approval for the development of a Doctorate of Nursing Practice program: Eastern Kentucky University (Richmond), Murray State University (Murray), Northern Kentucky University (Highland Heights), Western Kentucky University (Bowling Green).*
- *Directed that the University of Kentucky be granted Full approval for its Doctorate of Nursing Practice program.*
- *Directed that the following existing programs be granted Full approval for their Advanced Practice Registered Nurse programs: Bellarmine University (Louisville), Eastern Kentucky University (Richmond), Frontier Nursing University (Hyden), Indiana Wesleyan University (Richmond), Murray State University (Murray), Northern Kentucky University (Highland Heights), Spalding University (Louisville), University of Louisville (Louisville), Western Kentucky University (Bowling Green).*

Applications and Proposals for New Pre-licensure Programs of Nursing

- *Directed that Lincoln College of Technology (Owensboro) be granted Developmental approval status for the establishment of a Practical Nursing program.*
- *Directed that Lincoln College of Technology (Owensboro) be permitted to proceed to the proposal stage for the establishment of an Associate Degree Nursing program.*

Program of Nursing Survey Visit Reports

The Board approved the reports and recommendations for the site visits conducted by Board staff in compliance with 201 KAR 20:260-360:

- *Visits related to annual NCLEX pass rate: Hazard C&TC—Lees Campus (Jackson) ADN, Northern Kentucky University (Highland Heights) BSN, Southeast Kentucky C&TC (Pineville) ADN, West Kentucky C&TC (Paducah) PN.*
- *Visits related to new program development: Lindsey Wilson College (Columbia) BSN, ITT Technical Institute (Louisville) ADN, Somerset CC (London) ADN, Daymar College (Owensboro) ADN.*
- *Visits related to new building/educational facility: Elizabethtown C&TC (Elizabethtown) ADN & PN, Jefferson C&TC (Louisville) ADN & PN.*
- *Visits related to first graduating classes: Beckfield College (Florence) PN, Brown Mackie College (Louisville), PN.*
- *Focused visits: Galen College of Nursing Online Program (Louisville) ADN, Jefferson C&TC Online Program (Louisville) ADN, Maysville C&TC addition of another track (Maysville & Cynthiana) ADN.*
- *8-year visits: Big Sandy C&TC (Prestonsburg/Paintsville) ADN & PN, Bluegrass C&TC (Lexington) PN, Hazard C&TC (Hazard) PN, West Kentucky C&TC (Paducah) PN.*

(continued)

HIGHLIGHTS OF BOARD ACTIVITIES: FY 10-11 (CONT.)

- *Site visits conducted concurrently with accrediting agencies (graduate programs): Bellarmine University (Louisville), Eastern Kentucky University (Richmond), University of Louisville (Louisville).*

Program of Nursing Annual Approval Status

The Board approved the approval status for each of the programs of nursing across the Commonwealth based on meeting the standards of 201 KAR 20:260-360. Directed that:

- *Sixty (60) nursing programs be retained on Full approval status.*
- *Three (3) nursing programs be moved from Conditional to Full approval status.*
- *Three (3) nursing programs be moved from Initial to Full approval status.*
- *Eight (8) nursing programs be retained on Full approval status pending satisfactory submission of a self-study report that evaluates factors that contributed to annual pass rate of less than 85 percent for first-time testers on NCLEX examination.*
- *Five (5) nursing programs be retained on Full approval status pending a site visit by a Board representative to determine program compliance with Kentucky standards of 201 KAR 20:260-360.*
- *Two (2) nursing programs be retained on Initial approval status pending satisfactory submission of a self-study report that evaluates factors that contributed to annual pass rate of less than 85 percent for first-time testers on NCLEX examination.*
- *Two (2) nursing programs be retained on Initial approval status pending graduating of first class and a site visit from a Board representative to determine program compliance with Kentucky standards of 201 KAR 20:260-360.*
- *One (1) nursing program be retained on Initial approval status pending a site visit from a Board representative to determine program compliance with Kentucky standards of 201 KAR 20:260-360.*
- *Four (4) nursing programs be moved from Developmental to Initial approval status having admitted their first classes but as of yet not having graduated a class.*
- *One (1) nursing program be retained on Developmental approval status pending admission of the first class.*

Programs Appearing Before the Board Regarding Approval Status

The Board heard presentations from the following programs of nursing for failure to achieve an 85 percent pass rate for two or more years for first-time testers on the NLCEX examination:

- *Hazard C&TC—Lees Campus (Jackson) Associate Degree Nursing program was returned to Full approval status.*
- *Northern Kentucky University (Highland Heights) Baccalaureate Degree Nursing program was retained on Conditional approval status.*
- *Pending outcome of litigation, Spencerian College (Louisville) Associate Degree Nursing program was placed on Probational approval status. Decision upheld by Circuit Court currently under appeal to Court of Appeals.*

Continuing Competency

- *The Board accepted reports related to Initial CE Provider Approval, CE Provider Renewal, Individual Review of CE Offerings, and CE Audit (RNs & LPNs).*

KENTUCKY ADMINISTRATIVE REGULATIONS

Kentucky Administrative Regulations are enacted to operationalize statutory language and carry force and effect of law. Administrative regulations were revised during FY 10-11 as indicated by the effective date, and are available on the Legislative Research Commission's website (<http://www.lrc.state.ky.us/kar/TITLE201.htm#chp020>).

201 Kentucky Administrative Regulation 20:

Effective/Revision Date:

.056 Advanced Practice Registered Nurse Licensure.....	01/11
.057 Scope & Standards of Practice of APRNs.....	10/10
.059 Advanced Practice Registered Nurse Controlled Substances Prescriptions	06/11
.061 Doctor of Nursing Practice (DNP) Degree	12/10
.062 Standards for APRN Programs of Nursing.....	12/10
.070 Licensure by Examination	10/10
.085 Licensure Periods	01/05
.095 Inactive Nurse Licensure Status.....	10/05
.110 Licensure by Endorsement	10/10
.161 Investigation & Disposition of Complaints	07/10
.162 Procedures for Disciplinary Hearings Pursuant to KRS 314.091.....	10/10
.163 Standards for Approved Evaluators.....	07/10
.200 Definitions for Mandatory Continuing Education	07/92
.215 Continuing Competency Requirements	07/10
.220 Provider Approval.....	07/10
.225 Reinstatement of Licensure.....	10/10
.230 Renewal of Licenses	10/10
.235 The Prevention of Transmission of HIV & HBV by Nurses.....	07/10
.240 Fees for Applications & for Services	10/10
.260 Organization & Administration Standards for Prelicensure Programs of Nursing.....	08/09
.270 Programs of Nursing Surveys.....	06/09
.280 Standards for Prelicensure RN & PN Programs.....	10/07
.290 Standards for Prelicensure RN & PN Extension Programs	06/09
.310 Faculty for Prelicensure RN & PN Programs.....	10/07
.320 Standards for Curriculum of Prelicensure RN Programs.....	10/07
.340 Students in Prelicensure RN & PN Programs.....	10/07
.350 Education Facilities & Resources for Prelicensure RN & PN Programs	10/07
.360 Evaluation of Prelicensure RN & PN Programs.....	07/09
.370 Applications for Licensure & Registration.....	10/10
.380 Standards for Refresher Course Approval	11/87
.390 Nursing Incentive Scholarship Fund.....	05/07
.400 Delegation of Nursing Tasks to Unlicensed Persons.....	07/10
.410 Expungement of Records	07/10
.411 Sexual Assault Nurse Examiner Program Standards & Credential Requirements.....	10/10
.420 Determination of Death by a RN Employed by an Ambulance Service	08/99
.430 Discontinuance of Resuscitation by a RN Employed by an Ambulance Service	08/99
.440 Training of RNs Employed by an Ambulance Service in Determination of Death and Discontinuance of Resuscitation	08/99
.450 Alternative Program.....	07/10
.460 Declaratory Rulings	06/01
.470 Dialysis Technician Credentialing Requirements and Training Program Standards.....	04/11
.480 Licensure of Graduates of Foreign Nursing Schools	10/05
.490 Licensed Practical Nurse Intravenous Therapy Scope of Practice	06/11
.500 Nurse Licensure Compact.....	05/09
.510 Voluntary Relinquishment of a License or Credential.....	08/10

FINANCIAL OPERATIONS

The Kentucky Board of Nursing (KBN) is a fee-supported agency. No general revenue tax dollars are expended by the agency. The revenue balance for FY 10-11 was \$8,566,829 with expenditures totaling \$5,084,370. Funds from the balance are carried forward each year to meet the upcoming fiscal year budget needs. Revenue for FY 10-11 included income from the annual renewal of RN and LPN licenses. In 2006-2007, KBN moved from a biennial to an annual renewal period for licensees in an effort to maintain a more consistent and even generation of revenue. The ratio of 3.5:1, RN to LPN results in a disproportional yearly revenue generation in a biennial renewal period. The 2010-2011 enacted budget allowed for a transfer of \$188,900 to the General Fund.

Various KBN publications and informational materials were offered for a nominal fee that covered duplicating costs. Many brochures were available at no charge, including Continuing Education, SANE Program, KARE for Nurses Program, Disciplinary Process and Procedures for Nursing Licensure, Assuring Safe Nursing Care in Kentucky, Criminal Convictions, and Nursing Workforce Competency Development Grants. Four editions of the agency newsletter, the KBN Connection, were published. The KBN website continued to offer a multitude of information and services.

FEES FOR LICENSURE AND REGISTRATION APPLICATIONS AND SERVICES

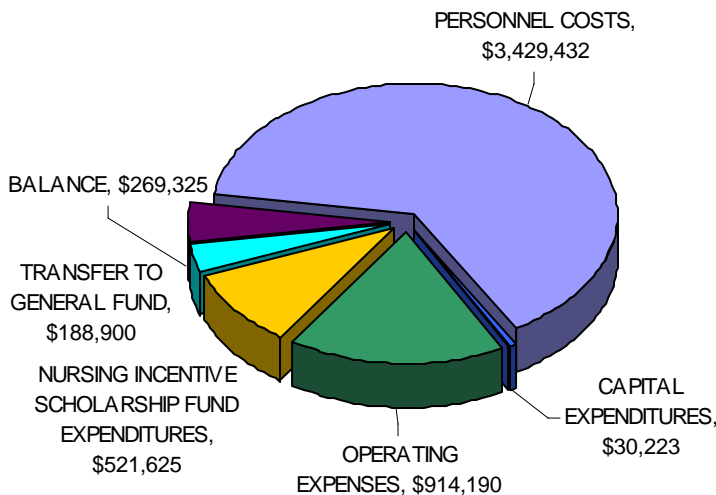
APPLICATION FEES

RN/LPN:	
Endorsement	\$150
Examination	\$110
Reinstatement	\$120
Renewal*	\$50
Retired Licensure Status	\$25
Dialysis Technician (DT):	
Initial Credential	\$70
Credential Renewal	\$70
Filed After Deadline	\$25 (Additional)
Credential Reinstatement	\$70
Duplicate Renewal Fee	\$25
Initial Training Program Approval	\$950
Continued Training Program Approval	\$800
Filed After Deadline	\$150 (Additional)
Reinstatement Training Program Approval	\$950
Advanced Practice Registered Nurse (APRN):	
Initial License	\$150
Reinstatement	\$120
Renewal	\$40 (Per Designation)
Sexual Assault Nurse Examiner (SANE):	
Credential	\$120
Reinstatement	\$120
Renewal	\$35
Continuing Education (CE):	
Initial Provider or Program Approval	\$400
Reinstatement of Provider Approval	\$400
Renewal of Provider Approval	\$200
Offering Approval Via Staff Review	\$10
Application to Establish a Prelicensure PON	\$2,000

SERVICES

Data Roster Download (Online):	
More than 20,000 Individuals	\$480**
5,000-20,000 Individuals	\$360**
Less than 5,000 Individuals	\$120**
** Plus 4-5% Processing Fee	
Publications:	
Scope of Practice Determination Guidelines	\$0.40 (Per Copy)
Summary Report of KBN Advisory Opinions on Nursing Practice Issues	\$1.20 (Per Copy)
KBN History	\$8.50 (Per Copy)
Validations:	
Online Licensure **	
Basic	No Charge
Enhanced	\$0.10 per license validated + \$225 annual fee
Premium	\$0.10 per license validated + \$375 annual fee
DT Credential (Written Validation)	\$10
Original Licensure to entities other than U.S.	
Boards of Nursing	\$50
Individual/Written List	\$50
(1st individual - \$20 each additional)	
Miscellaneous:	
Name Change	\$35
Nursing Certificate	\$30
Duplicated Material	\$0.10 (Per Page)
Copy of an Examination Result or Transcript	\$25
Paper Copy of all LPN, RN, and APRN Applications	\$40
Returned Check Fee	\$35

FINANCIAL REPORT FY 10-11



Total Revenues = \$5,353,695
Total Expenditures = \$5,084,370
Balance = \$269,325

* \$5 of fee to NISF; \$5 of fee to KARE
 ** Fees are for services provided by another party; none retained by KBN

INVESTIGATION & DISCIPLINARY ACTION

DISCIPLINARY ACTIONS FY 10-11

TYPE OF DISCIPLINARY ACTION RN PN

* Licenses Permanently Revoked.....	1.....	0
Licenses Revoked.....	0.....	0
Licenses Immediately Temporarily Suspended	19.....	8
Licenses Suspended/Continued on Suspension	12.....	16
Licenses Suspended Immediately for Failure to Comply with Order	53.....	15
Licenses Suspended/Stayed Followed by Limitation/Probation or Probation.....	2.....	2
Licenses Issued/Reinstated on Limited/Probated or Probated	29.....	8
Licensed Permanently Surrendered	0.....	0
Licenses Voluntarily Surrendered.....	19.....	12
Admitted to NCLEX or Endorsement Probated/Limited.....	0.....	0
Admitted to NCLEX or Endorsement Granted/Reprimand	1.....	0
* Admitted/Reinstated to KARE Program via Decision	2.....	0
Licenses Granted Reinstatement/No Hearing Required.....	2.....	0
Licenses Denied Reinstatement	10.....	5
Licenses Reprimanded	20.....	11
* Licenses Reprimanded with Urine Drug Screens.....	11.....	7
Licenses Denied	6	
Privilege to Practice Immediately Temporarily Suspended	0	
* Privilege to Practice Suspended.....	1	
Privilege to Practice Denied Reinstatement.....	0	
* Privilege to Practice Continued on Suspension.....	3	
Cease and Desist Notices Issued.....	1	
Temporary Work Permits Voided.....	0	
APRN License Voluntarily Surrendered.....	3	
APRN License Placed on Limitation/Probation.....	2	
* APRN License Denied Reinstatement.....	1	
Decisions Appealed	0	
Licenses Cleared/Removed from Probation	12	
Consent Decrees/Employment	17	
Consent Decrees/Continuing Education	54	
Consent Decrees/Positive Urine Drug Screen.....	19	

* Consent Decrees/Falsified Application for Licensure 43 TYPE OF DISCIPLINARY ACTION

Consent Decrees/Dialysis Technicians (DT).....	7
* DT Credential Permanently Revoked	1
DT Credential Immediately Temporarily Suspended	0
DT Credential Suspended/Continued on Suspension.....	0
DT Credential Denied Reinstatement	0

* = New Entry

COMPLAINT ACTIVITY

Complaints/Convictions/Information Filed Away - No Formal Action Deemed Necessary

Reviewed By:

Credentials Review Panel.....	140
Staff Member Review.....	870
Board Member Review	162

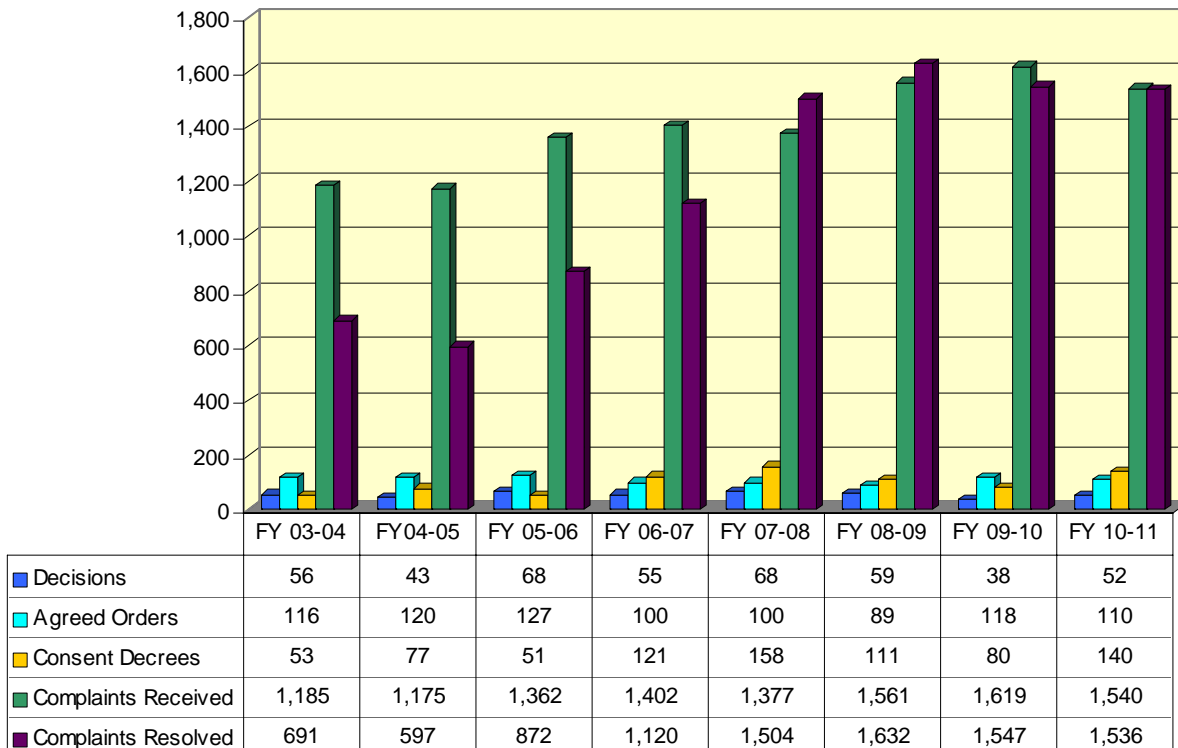
TOTAL NUMBER OF COMPLAINTS RECEIVED: 1,540

ACTIVE CASES AS OF JUNE 30, 2011: 280

The Kentucky Nursing Laws provide that KBN may "deny, limit, revoke, probate or suspend any license to practice nursing issued by the Board or applied for . . . or to otherwise discipline a licensee or to deny admission to the licensure examination, or to require evidence of evaluation and therapy"

KBN continues its efforts to make the public aware of the investigatory and disciplinary procedures and to emphasize the legal requirement to, and importance of, reporting nurses who are

SUMMARY OF DISCIPLINARY ACTIONS FY 03-04 TO 10-11



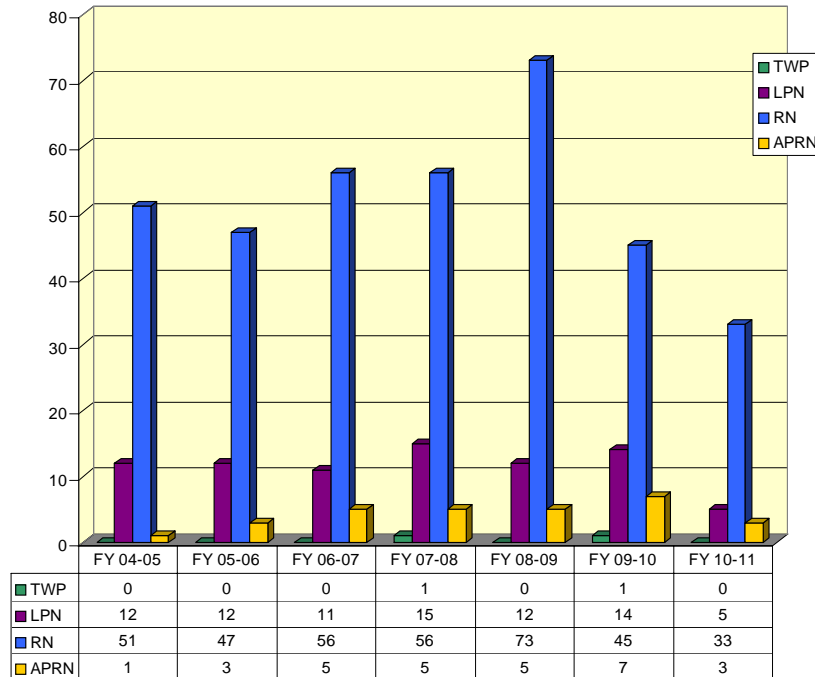
COMPLIANCE — PROBATION & KARE PROGRAM

The Compliance Section of the Consumer Protection Branch monitors nursing licenses that have been placed on probation with the Kentucky Board of Nursing or participants whom have requested admission and are being monitored by the Kentucky Alternative Recovery Effort (KARE) for Nurses Program.

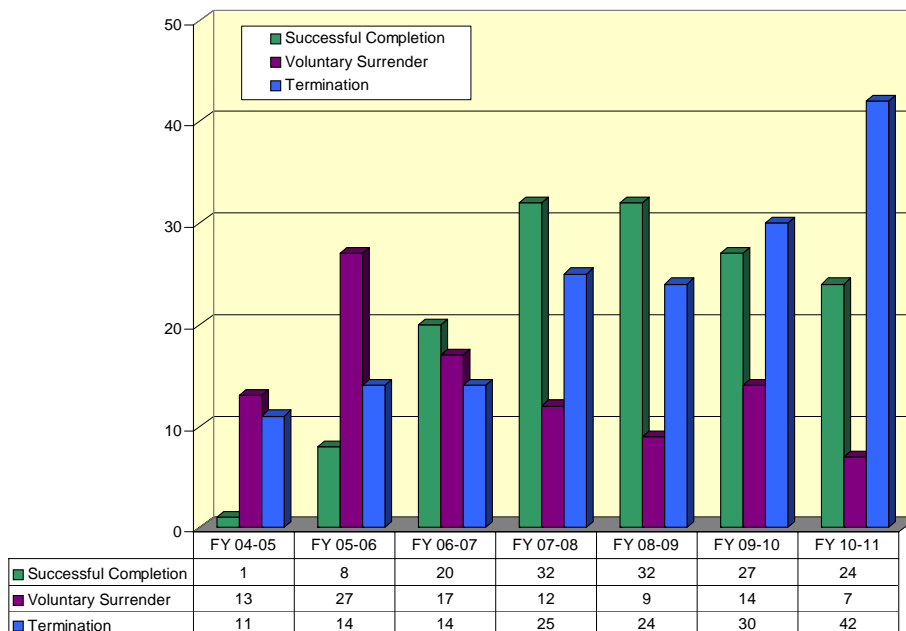
The KARE for Nurses program was developed and is offered by the Kentucky Board of Nursing. The purpose of the KARE for Nurses Program is to identify nurses whose abilities to provide nursing care are compromised by dependency on drugs or alcohol, and to assist these nurses so that they can return to competent and safe nursing practice. This program is a therapeutic monitoring program that offers an opportunity for education, treatment and recovery for the chemically dependent nurse. Participants must meet certain eligibility criteria and voluntarily enter into an agreement with the program.

The KARE for Nurses Program recognizes that nurses are individuals who have dedicated their lives to helping others and are now in need of help themselves. The foundation of the program is that substance abuse is treatable and that the recovery and return of competent nursing practice is in the best interest of the nurse and public health.

KARE PROGRAM ADMISSIONS: FY 04-05 TO 10-11



KARE PROGRAM COMPLETIONS, SURRENDERS, & TERMINATIONS: FY 04-05 TO 10-11



NURSING PRACTICE

KBN interprets the legal scope of nursing practice according to the Kentucky Nursing Laws and KBN administrative regulations in the determination of safe and effective nursing care for the citizens of the Commonwealth. In response to inquiries requesting interpretation of the legal scope of nursing practice, KBN has published formal advisory opinion statements as guidelines for safe practice (see the list below), as well as issuing other opinions on nursing practice matters. Advisory Opinion Statements are available on the KBN website (<http://kbn.ky.gov/practice/AOS>). During FY 10-11, the Board issued nursing practice advisory opinions addressing:

- LPN Scope of Practice – administration of local anesthesia in a dental setting
- LPN Scope of Practice – role in advanced life support
- APRN Practice – delegate to RN or LPN the handing of a sample medication to a patient

The following Advisory Opinion Statements were revised:

- AOS #9, The Performance of Wound Debridement by Nurses – revised 10/2010
- AOS #14, Roles of Nurses in the Implementation of Patient Care Orders – revised 10/2010
- AOS #22, Roles of Nurses Who Provide “Private Duty” Nursing – revised 10/2010
- AOS #35, Cosmetic and Dermatological Procedures by Nurses – revised 10/2010
- AOS #10, Roles of Nurses in the Care of Intrapartum Patients – revised 02/2011
- AOS #34, Roles of Nurses in Maintaining Confidentiality of Patient Information – revised 02/2011
- AOS #27, Components of Licensed Practical Nursing Practice – revised 06/2011

The following Advisory Opinion Statements were reviewed:

- AOS #19, Responsibility and Accountability of Nurses for Patient Care Assignments & Nursing Care Delivery – reviewed 01/2011
- AOS #28, Roles of Nurses and Unlicensed Nursing Personnel in Endoscopic Procedures – reviewed 01/2011
- AOS #24, Advisory Opinion Statement on Patient Abandonment by Nurses – reviewed 03/2011
- AOS #25, Peripheral Insertion of Central and Midline Intravenous Catheters by Nurses – reviewed 05/2011

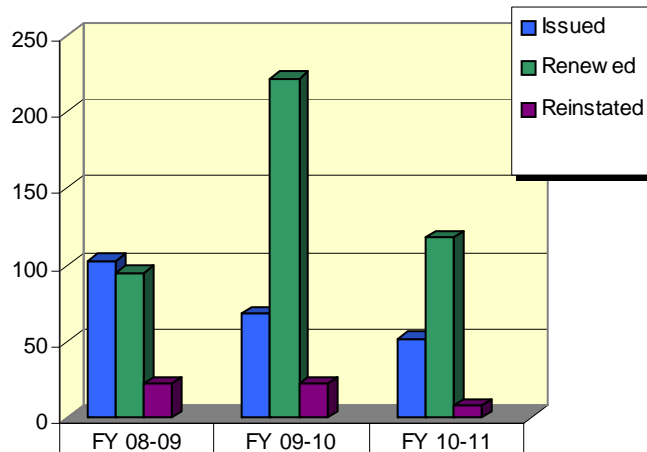
KBN Advisory Opinion Statements		<u>Effective/Revision Date</u>
#03	Recommended Course Content, Intravenous (IV) Therapy for Registered Nurses and Licensed Practical Nurses	02/10
#04	Roles of Nurses in the Administration of Medication per Intraspinal Routes	04/07
#05	Performance of Advanced Life Support Procedures by Nurses	02/05
#08	Role of the RN First Assistant	04/07
#09	Performance of Wound Debridement by Nurses	10/10
#10	Roles of Nurses in the Care of Intrapartum Patients	02/11
#11	Roles of Nurses in the Insertion and Removal of a Nasogastric Tube and in the Reinsertion of a Gastrostomy Tube	04/08
#13	Roles of Nurses in Psychiatric and Mental Health Nursing Practice	04/07
#14	Roles of Nurses in the Implementation of Patient Care Orders	10/10
#15	Roles of Nurses in the Supervision and Delegation of Nursing Acts to Unlicensed Personnel	02/05
#16	Roles of Nurses in the Administration of Medication via Various Routes	04/07
#17	Roles of Nurses in the Administration of “PRN” Medication and Placebos	02/05
#18	Employment of Nursing Students as Nursing Personnel Using Either an Academic or a “Nurse Extern” Service Model	04/08
#19	Responsibility and Accountability of Nurses for Patient Care Assignments and Nursing Care Delivery	02/05
#20	Roles of RNs in Invasive Cardiac Procedures	02/05
#21	Roles of Nurses and Technicians in Dialysis	02/05
#22	Roles of Nurses who Provide “Private Duty” Nursing	10/10
#23	Application and Removal of a Cast by Nurses and Closed Reduction of a Fracture by ARNPs	04/07
#24	Patient Abandonment by Nurses	02/05
#25	Peripheral Insertion of Central and Midline Intravenous Catheters by Nurses	02/05
#26	Roles of Nurses in the Delivery of Prehospital Emergency Medical Care via Ambulance Services	02/05
#27	Components of LPN Practice	06/11
#28	Roles of Nurses and Unlicensed Nursing Personnel in Endoscopic Procedures	02/05
#29	Cardiopulmonary/Respiratory Nursing Practice	04/07
#30	School Nursing Practice	04/07
#31	Removal of Femoral Access Devices (Sheaths) and Use of Mechanical Compression Devices by Nurses	04/07
#32	Administration of Medications for Sedation by Nurses	02/09
#33	Roles of Nurses in the Delegation of Tasks to Paramedics in a Hospital Emergency Department	02/05
#34	Roles of Nurses in Maintaining Confidentiality of Patient Information	02/11
#35	Cosmetic and Dermatological Procedures by Nurses	10/10
#36	Role of Nurses in Resuscitation	02/08
#37	Role of the Advanced Registered Nurse Practitioner in the Prescribing of Medications to Self and/or Family	10/09
#38	Facilitation of Self-Administration of Medications in a Non-Healthcare Setting	04/10

DIALYSIS TECHNICIANS

APPROVED DIALYSIS TECHNICIAN TRAINING PROGRAMS AS OF JUNE 30, 2011

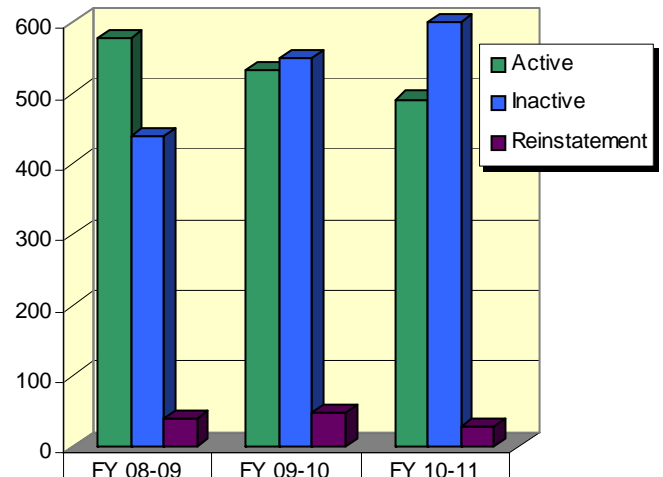
PROGRAM NAME	CITY & STATE	10-11 GRADUATES
DCI - DT Training Program	Cincinnati, OH & Maysville, KY	0
FMCNA of Greenup p/k/a FMCNA of Ashland	Greenup, KY	1
FMCNA Louisville p/k/a FMCNA of Louisville & FMCNA of S. Indiana	Louisville, KY	9
FMCNA of Prestonsburg p/k/a FMCNA of Somerset	Prestonsburg, KY	3
FMCNA Lexington East p/k/a FMCNA of S. Indiana & FMCNA Prestonsburg	Lexington, KY	13
DCI DT Training Program of Kentucky	Lexington, KY	0
DaVita LaGrange Kentucky DT Training Program a/k/a Taylor County Dialysis	Campbellsville, KY	15
University of Louisville Kidney Disease Program DT Training Program	Louisville, KY	2
FMCNA Kuttawa p/k/a FMCNA of Murray & Renal Care Group of W. KY	Murray, KY	8
Collins Career Center DT Training Program	Chesapeake, OH	0
DSI Louisville DT Training Program	Louisville, KY	0
DaVita KY Buccaneer DT Training Program	Strongsville, OH	2
Renal Advantage KY DT Training Program	Brentwood, TN	1
TOTAL NUMBER OF GRADUATES		54

**DT CREDENTIALS ISSUED
FY 08-09 TO 10-11**



	FY 08-09	FY 09-10	FY 10-11
Issued	103	68	52
Renewed	95	222	118
Reinstated	22	22	8
Total	220	312	178

**DT CREDENTIALS SUMMARY
FY 08-09 TO 10-11**



	FY 08-09	FY 09-10	FY 10-11
Active	577	533	491
Inactive	438	550	645
Reinstatement	39	47	28

NURSING INCENTIVE SCHOLARSHIP FUND

The Nursing Incentive Scholarship Fund (NISF) provides scholarships to Kentucky residents for attending approved prelicensure nursing programs (registered nurse or practical nurse) or graduate nursing programs. Scholarship recipients must work as nurses in Kentucky for one year for each academic year funded. To be eligible for consideration, an applicant must have been admitted to a nursing program. Applications for scholarships are accepted from January 1 to June 1. The amount of each scholarship is \$3,000 per year, or \$1,500 per semester. If a recipient does not complete the nursing program within the time frame specified by the program, or if the recipient does not complete the required employment, then the recipient is required to repay any NISF monies awarded, plus accrued interest.

The Nursing Incentive Scholarship Grant Review Committee was created to accept grant proposals for workforce competency development, which is defined as organized, structured or formal activity designed to improve the ability of nurses to meet the health care needs of the citizens of Kentucky. The nursing workforce is defined as actual and/or potential licensed nursing population. The Board directed that no consideration be given to any workforce development grant proposals until there is resolution of the current Kentucky budget issues.

KENTUCKY BOARD OF NURSING NURSING INCENTIVE SCHOLARSHIP FUND SUMMARY: FY 05-06 TO 10-11						
APPLICATION DATA	FY 05-06	FY06-07	FY 07-08	FY 08-09	FY 09-10	FY 10-11
Apps Processed	715	728	627	535	543	423
Apps Complete/Not Funded	482	611	488	415	426	252
Apps Incomplete/Not Funded	45	48	44	27	20	15
Apps Approved/Funded:	188	116	95	93	97	156
Initial	124	88	65	87	64	133
Continuation	64	28	30	6	33	23
Recipients Completed	78	78	79	130	60	77

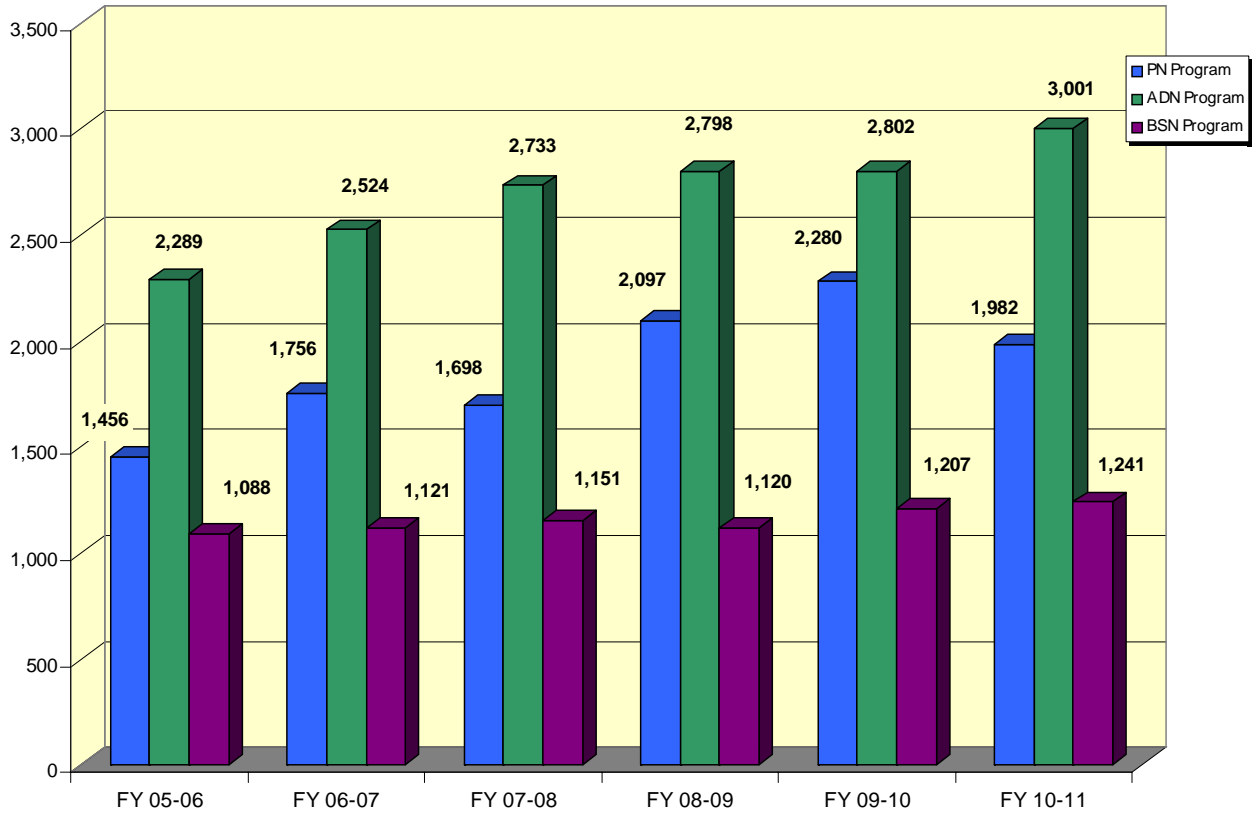
NISF AWARD DATA	FY 05-06	FY06-07	FY 07-08	FY 08-09	FY 09-10	FY 10-11
NISF Awards Granted:	\$546,000	\$307,500	\$273,500	\$267,000	\$268,500	\$450,000
Initial	\$366,000	\$238,500	\$192,500	\$250,500	\$184,500	\$390,000
Continuation	\$180,000	\$69,000	\$81,000	\$16,500	\$84,000	\$60,000

Note: The amount of awards varies each fiscal year due to cancellations, deferments, and defaults.

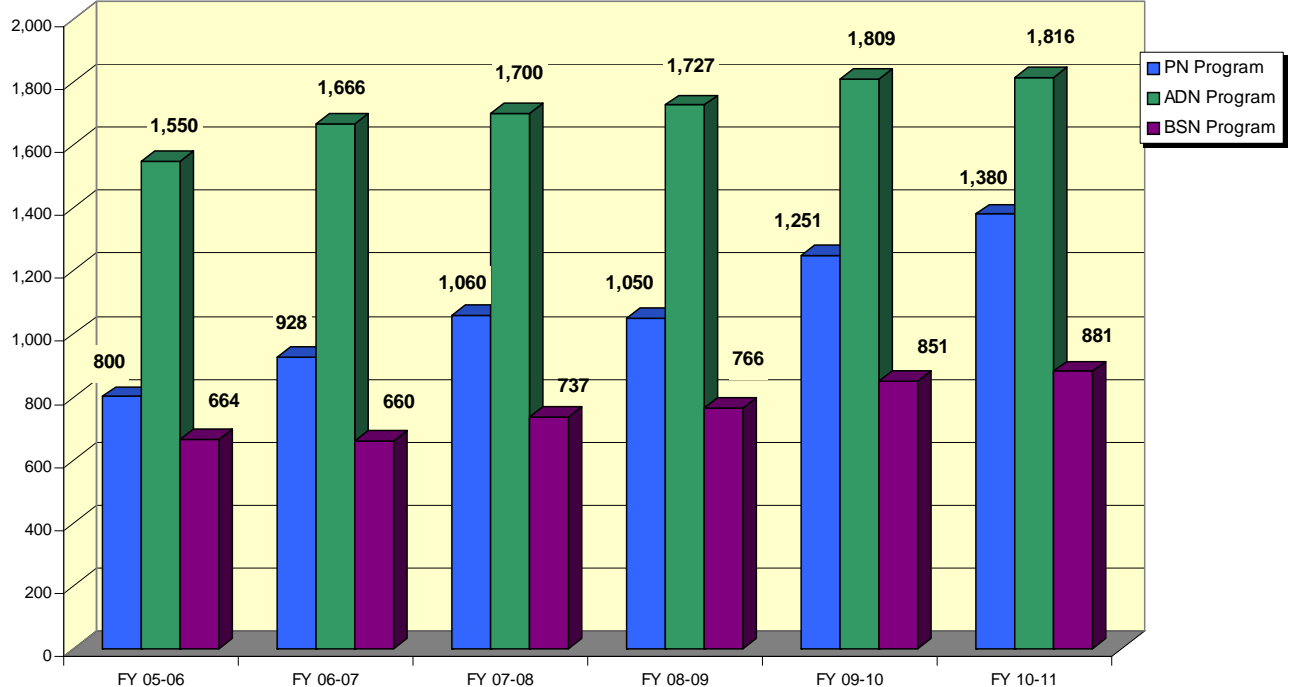
NURSING EDUCATION

The Kentucky Board of Nursing (KBN) is the legally authorized body in the Commonwealth to approve programs of nursing preparing persons for eligibility for licensure as nurses. Through the provisions of the Kentucky Nursing Laws and applicable Kentucky administrative regulations, the Board prescribes standards for educational institutions offering programs preparing candidates for licensure as nurses. As of June 30, 2011, there were a total of 14 baccalaureate nursing (BSN) programs, 38 associate degree (ADN) programs, and 35 practical nursing (PN) programs approved by KBN. The National Council of State Boards of Nursing (NCSBN) publishes the national NCLEX pass rate for first-time and repeat testers on their website (ncsbn.org). For 2011, the pass rate for first-time testers for the NCLEX-RN was 88 percent and Kentucky's average was 90 percent. The NCLEX-PN national pass rate for 2011 was 85 percent and Kentucky's pass rate was 89 percent.

PROGRAM OF NURSING ADMISSIONS: FY 05-06 TO 10-11

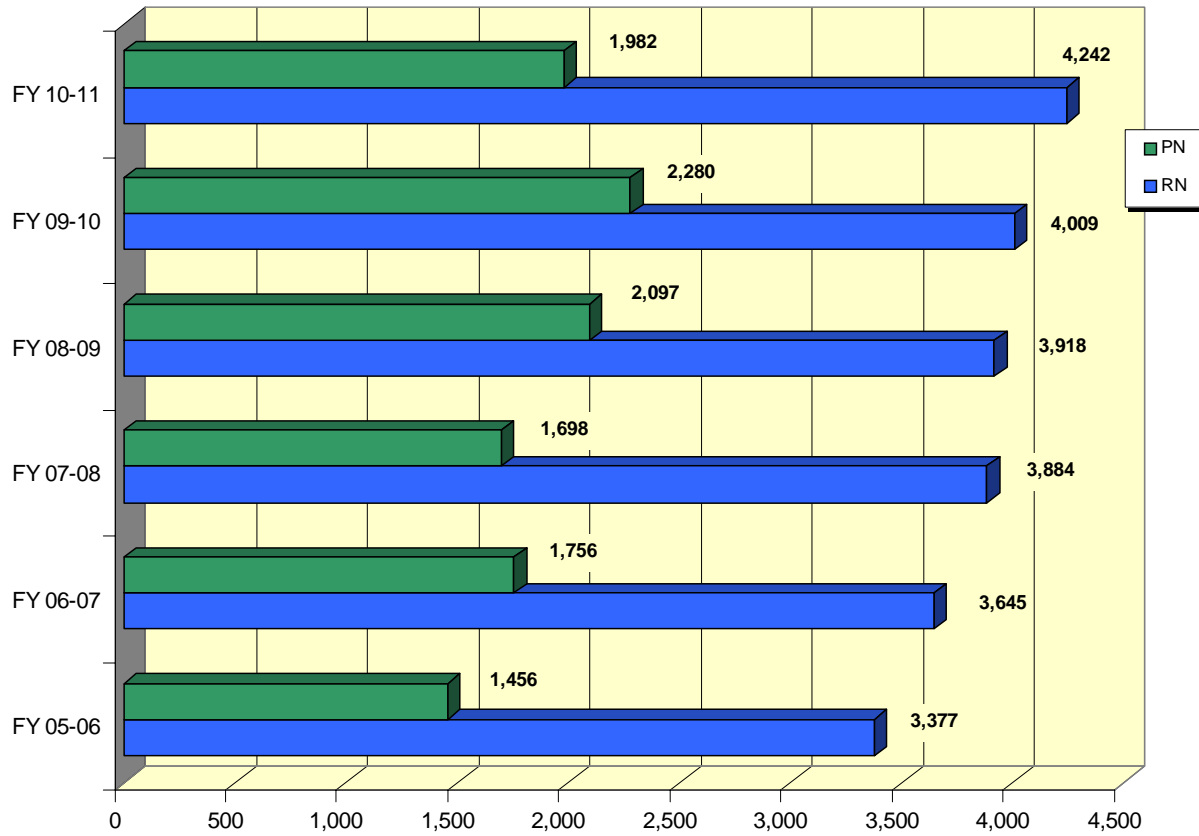


PROGRAM OF NURSING GRADUATES: FY 05-06 TO 10-11

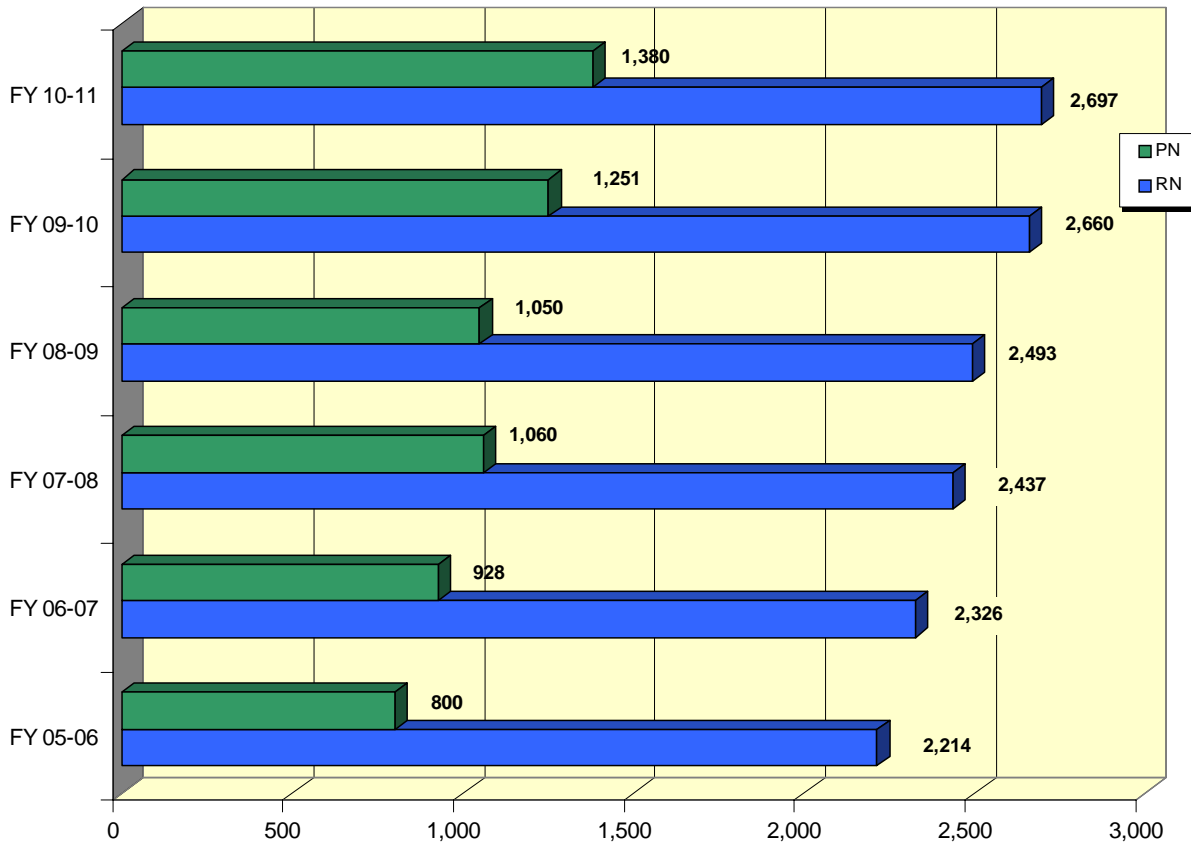


NURSING EDUCATION (CONTINUED)

REGISTERED NURSE & PRACTICAL NURSE ADMISSIONS: FY 05-06 TO 10-11



REGISTERED NURSE & PRACTICAL NURSE GRADUATES: FY 05-06 TO 10-11



NURSING EDUCATION (CONTINUED)

KENTUCKY BOARD OF NURSING: NCLEX PASS RATE REPORT: 2006 TO 2011 BACCALAUREATE PROGRAMS OF NURSING

<i>BSN PROGRAMS</i>	<i>2006</i>	<i>2007</i>	<i>2008</i>	<i>2009</i>	<i>2010</i>	<i>2011</i>
Bellarmine University	97%	92%	93%	96%	92%	91%
Berea College	91%	58%	63%	85%	75%	80%
Eastern Kentucky University	92%	99%	98%	99%	98%	96%
Kentucky Christian University	91%	67%	80%	93%	73%	100%
Morehead State University	64%	86%	96%	100%	100%	100%
Murray State University	87%	89%	91%	92%	85%	89%
Northern Kentucky University	82%	83%	78%	72%	80%	91%
Spalding University	95%	76%	86%	76%	84%	85%
Thomas More College	92%	74%	75%	87%	67%	86%
University of Kentucky	99%	97%	95%	98%	97%	94%
University of Louisville	86%	89%	96%	95%	97%	95%
Western Kentucky University	86%	89%	92%	91%	97%	100%

KENTUCKY BOARD OF NURSING: NCLEX PASS RATE REPORT: 2006 TO 2011 ASSOCIATE DEGREE PROGRAMS OF NURSING

<i>ADN PROGRAMS</i>	<i>2006</i>	<i>2007</i>	<i>2008</i>	<i>2009</i>	<i>2010</i>	<i>2011</i>
Ashland Community & Technical College	80%	80%	98%	96%	90%	87%
Beckfield College	N/A	69%	83%	86%	90%	87%
Big Sandy Community & Technical College	100%	70%	93%	92%	72%	72%
Bluegrass Community & Technical College—Cooper Drive	94%	91%	88%	88%	75%	86%
Bluegrass Community & Technical College—Lawrenceburg	N/A	N/A	N/A	67%	100%	96%
Bowling Green Technical College—Glasgow	N/A	N/A	N/A	100%	97%	100%
Campbellsville University	N/A	N/A	73%	100%	100%	93%
Eastern Kentucky University	93%	95%	99%	96%	94%	93%
Elizabethtown Community & Technical College	90%	98%	100%	97%	93%	97%
Galen College of Nursing	89%	76%	81%	85%	80%	86%
Gateway Community & Technical College	68%	56%	61%	91%	98%	100%
Hazard Community & Technical College—Hazard	75%	71%	97%	93%	94%	82%
Hazard Community & Technical College—Lees	71%	60%	76%	78%	93%	84%
Henderson Community College	93%	88%	84%	85%	96%	93%
Hopkinsville Community College	94%	90%	95%	100%	100%	98%
Jefferson Community & Technical College	89%	82%	89%	89%	85%	87%
Kentucky State University	69%	78%	91%	94%	91%	88%
Lincoln Memorial University—Corbin	100%	73%	96%	93%	82%	100%
Madisonville Community College	96%	89%	91%	89%	91%	87%
Maysville Community & Technical College	90%	91%	75%	86%	89%	81%
Maysville Community & Technical College—Licking Valley	N/A	N/A	N/A	N/A	76%	N/A
Midway College	92%	82%	98%	92%	89%	86%
Morehead State University	96%	79%	92%	92%	96%	98%
Morehead State University—Mt. Sterling	N/A	N/A	N/A	100%	91%	86%
National College	N/A	N/A	N/A	N/A	33%	100%
Owensboro Community & Technical College	91%	92%	89%	86%	80%	86%
Somerset Community College	96%	96%	94%	91%	100%	98%
SE KY Community & Technical College—Cumberland	79%	84%	86%	100%	86%	86%
SE KY Community & Technical College—Pineville	N/A	N/A	79%	76%	90%	81%

>> continued >>

NURSING EDUCATION (CONTINUED)

KENTUCKY BOARD OF NURSING: NCLEX PASS RATE REPORT: 2006 TO 2011 ASSOCIATE DEGREE PROGRAMS OF NURSING (CONTINUED)

<i>ADN PROGRAMS (CONT.)</i>	<i>2006</i>	<i>2007</i>	<i>2008</i>	<i>2009</i>	<i>2010</i>	<i>2011</i>
Spencerian College	82%	79%	72%	81%	79%	77%
St. Catharine College	93%	71%	100%	79%	65%	90%
University of Pikeville	96%	69%	100%	90%	93%	85%
West KY Community & Technical College	83%	85%	91%	91%	88%	99%
Western KY University—Bowling Green	87%	90%	86%	93%	93%	92%
Western KY University—Glasgow	67%	100%	89%	100%	100%	93%

KENTUCKY BOARD OF NURSING: NCLEX PASS RATE REPORT: 2006 TO 2011 PROGRAMS OF PRACTICAL NURSING

<i>PN PROGRAMS</i>	<i>2006</i>	<i>2007</i>	<i>2008</i>	<i>2009</i>	<i>2010</i>	<i>2011</i>
Ashland Community & Technical College	79%	87%	87%	96%	94%	77%
ATA Career Education	N/A	N/A	N/A	68%	78%	56%
Beckfield College	N/A	N/A	N/A	N/A	95%	96%
Big Sandy Comm. & Technical College—Mayo/Paintsville	N/A	96%	94%	96%	100%	100%
Bluegrass Community & Technical College—Danville	84%	100%	90%	91%	90%	89%
Bluegrass Community & Technical College—Leestown	93%	93%	94%	93%	98%	100%
Bowling Green Technical College—Glasgow	100%	N/A	96%	93%	100%	94%
Bowling Green Technical College—Bowling Green	N/A	N/A	N/A	100%	100%	100%
Brown Mackie College—Northern KY	N/A	100%	95%	98%	89%	91%
Brown Mackie College—Louisville	N/A	N/A	N/A	N/A	92%	81%
Elizabethtown Community & Technical College	89%	N/A	76%	100%	100%	100%
Galen College of Nursing	94%	97%	93%	92%	90%	86%
Gateway Community & Technical College	90%	N/A	93%	N/A	100%	100%
Hazard Community & Technical College	71%	89%	94%	86%	93%	75%
Henderson Community College	N/A	100%	100%	100%	100%	100%
Hopkinsville Community College	100%	N/A	100%	95%	100%	100%
Jefferson Community & Technical College—Carrollton	100%	75%	N/A	89%	85%	88%
Jefferson Community & Technical College—Louisville	93%	100%	92%	94%	85%	86%
Jefferson Community & Technical College—Shelbyville	90%	94%	100%	81%	93%	93%
Madisonville Community College	91%	96%	96%	100%	96%	97%
Maysville Community & Technical College	N/A	97%	100%	100%	93%	96%
Maysville Community & Technical College—Licking Valley	N/A	93%	91%	75%	100%	100%
Maysville Community & Technical College—Montgomery	N/A	N/A	N/A	N/A	100%	90%
Maysville Community & Technical College—Rowan	N/A	100%	93%	81%	100%	81%
Owensboro Community & Technical College	N/A	100%	97%	100%	100%	100%
Somerset Community College	N/A	100%	96%	100%	100%	100%
Somerset Community College—Clinton Center	N/A	N/A	100%	94%	100%	100%
Somerset Community College—Laurel	73%	N/A	92%	94%	N/A	100%
SE KY Community & Technical College—Cumberland	80%	91%	91%	92%	100%	90%
SE KY Community & Technical College—Pineville	N/A	100%	88%	100%	100%	100%
Spencerian College	100%	98%	93%	96%	98%	96%
West KY Community & Technical College—Murray	94%	100%	83%	100%	100%	100%
West KY Community & Technical College—Paducah	100%	92%	84%	75%	97%	100%

CONTINUING EDUCATION/COMPETENCY

As a mechanism to promote continuing competency, the Kentucky Nursing Laws (KRS 314.073) mandate that licensees shall be required to document continuing competency during the immediate past licensure period as prescribed in regulations promulgated by the Board. KBN is the Commonwealth agency legally authorized to approve providers of mandatory CE. During FY 10-11, according to KBN Administrative Regulation 201 KAR 20:215, validation of CE/competency must have included one of the following:

1. Proof of having earned 14 approved contact hours; **OR**
2. A national certification or recertification related to the nurse's practice role (in effect during the whole period or initially earned during the period); **OR**
3. Completion of a nursing research project as principal investigator, coinvestigator, or project director. Must have been qualitative or quantitative in nature, utilized research methodology, and included a summary of the findings; **OR**
4. Publication of a nursing related article; **OR**
5. A professional nursing education presentation that was developed by the presenter, presented to nurses or other health professionals, and evidenced by a program brochure, course syllabi, or a letter from the offering provider identifying the licensee's participation as the presenter of the offering; **OR**
6. Participation as a preceptor for at least one nursing student or new employee undergoing orientation (must have been for at least 120 hours, have had a one-to-one relationship with student or employee, may have precepted more than one student during the 120 hours, and preceptorship shall have been evidenced by written documentation from the educational institution or preceptor's supervisor); **OR**
7. Proof of having earned 7 approved contact hours, **PLUS** a nursing employment evaluation that was satisfactory for continued employment (must have been signed by supervisor with the name, address, and phone number of the employer included), and covered at least 6 months of the earning period.
8. College courses, designated by a nursing course number, and courses in physical and social sciences counted toward CE hours. One semester credit hour equaled 15 contact hours; one quarter credit hour equaled 12 contact hours.

CHANGES IN FY 10-11

Pediatric Abusive Head Trauma or "Shaken Baby Syndrome"

In 2010 the General Assembly passed House Bill 285, sponsored by Rep Addia Wucher, which amended the Nursing Continuing Competency requirements to include that all nurses participate in a one-time educational program on pediatric abusive head trauma or "shaken baby syndrome". By mandate, the Board is requiring all **present** and **future** licensees to complete a **one-time training** course of at least one and one-half (1.5) hours covering the recognition and prevention of pediatric abusive head trauma. Nurses licensed before July 15, 2010 must complete the course by December 31, 2013. Nurses licensed **on or after** July 15, 2010 must receive the education within three (3) years of their initial licensure dates. The course can be offered by any CE provider accepted by KBN. Nurses will only need to submit proof of completion of the requirement should they be audited.

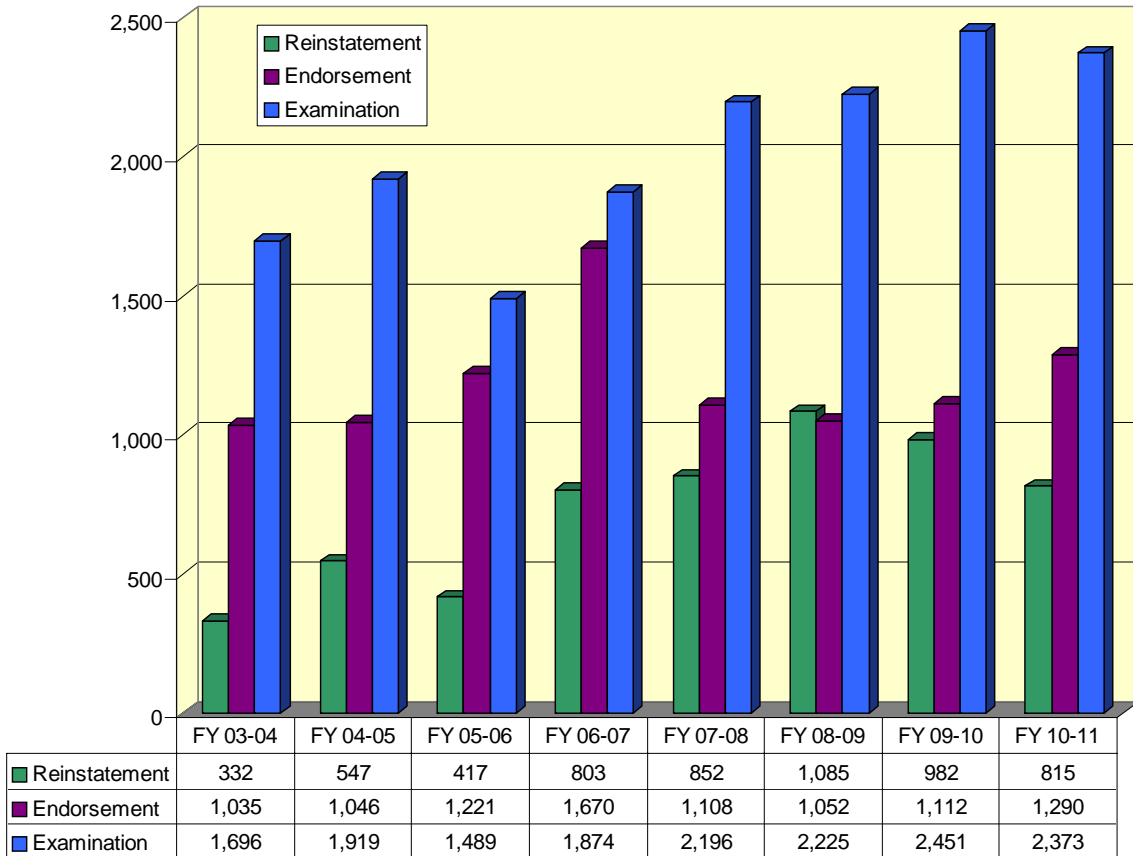
CE PROVIDERS BY CATEGORY

Professional Nursing Organizations.....	8
Related Nursing Organizations.....	4
Educational Institutions.....	29
Health Service Agencies.....	130
Health Related Organizations.....	27
Commercial Organizations.....	11
Other	23
Refresher Courses	6
Total.....	238
 Individual Review of CE Offerings	 40

LICENSURE & REGISTRATION STATISTICS

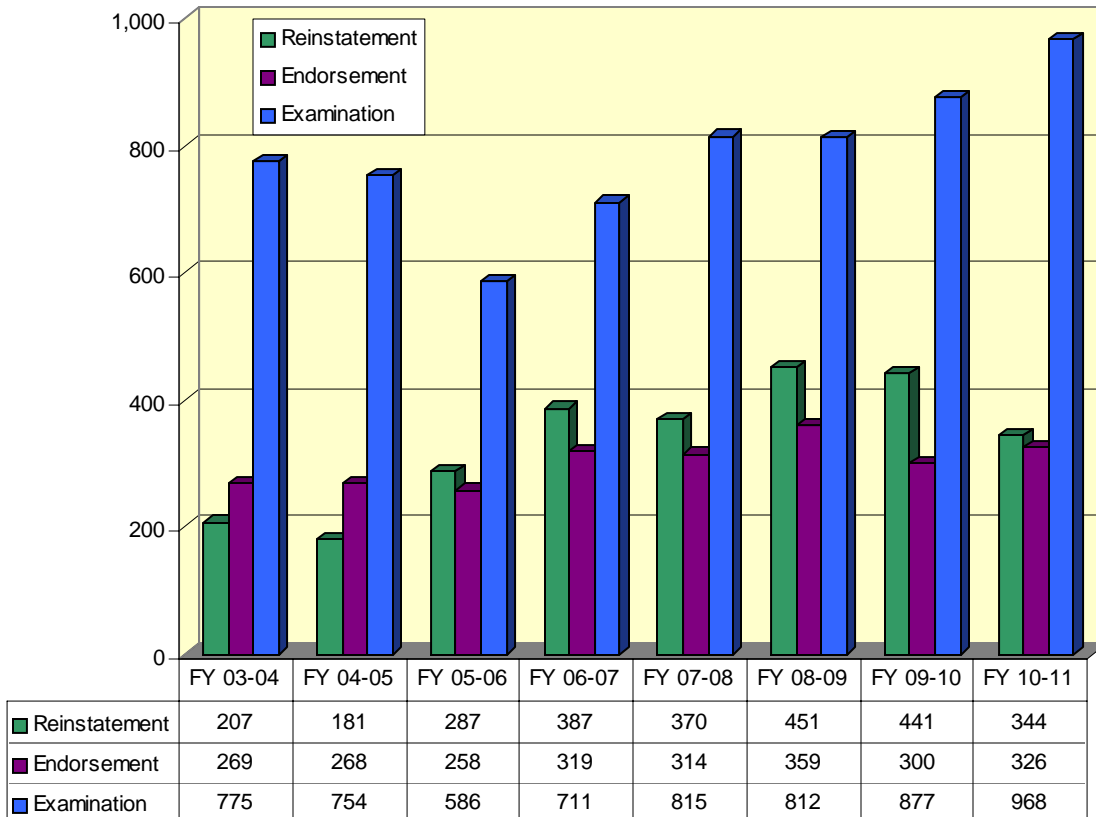
REGISTERED NURSE

LICENSURE BY ENDORSEMENT, REINSTATEMENT & EXAMINATION FY 03-04 TO 10-11



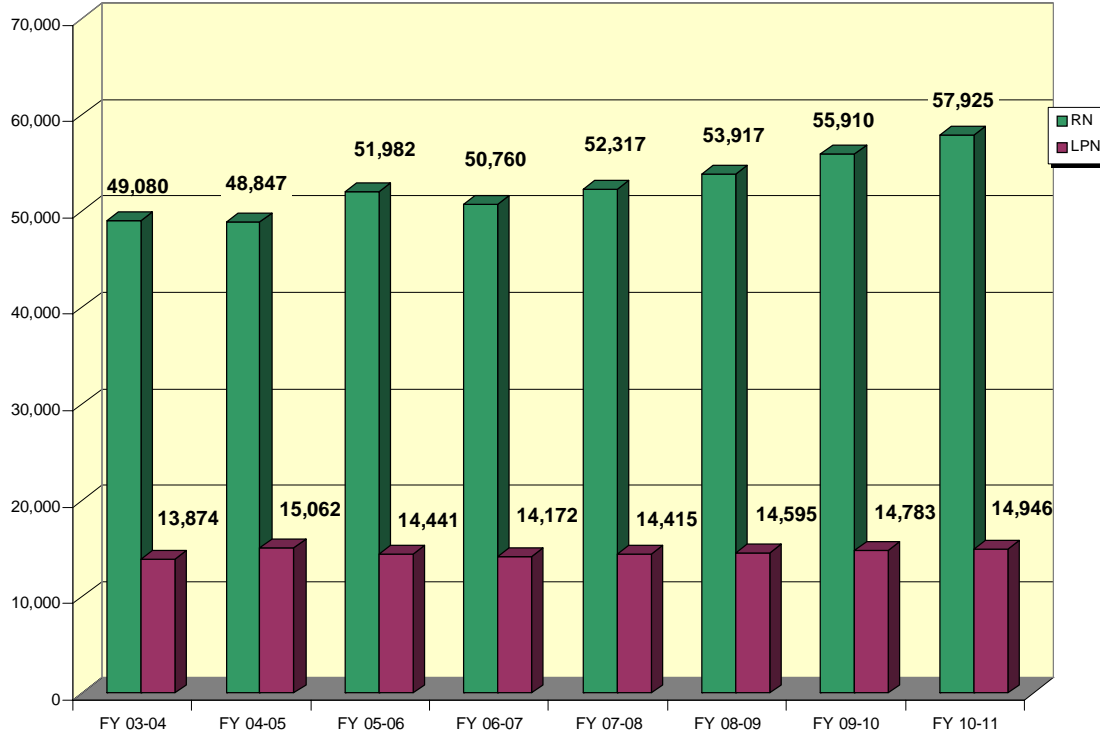
PRACTICAL NURSE

LICENSURE BY ENDORSEMENT, REINSTATEMENT & EXAMINATION FY 03-04 TO 10-11

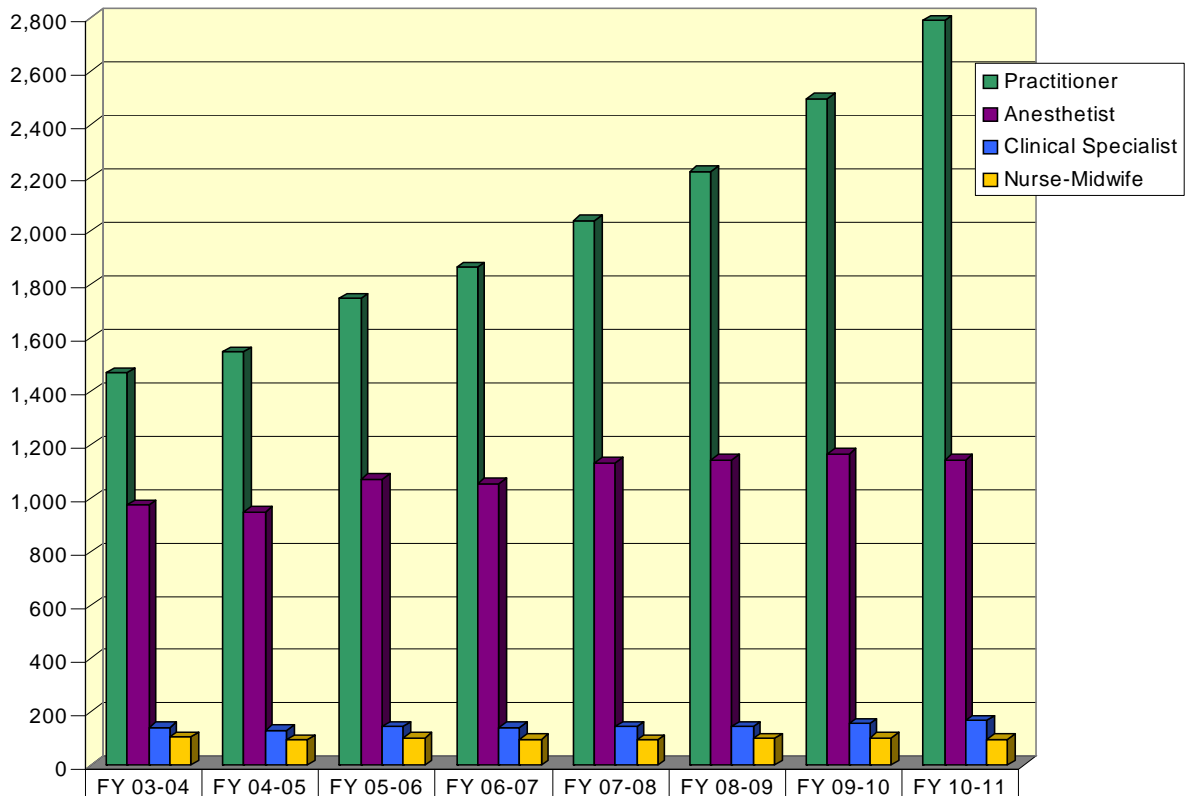


LICENSURE & REGISTRATION STATISTICS (CONTINUED)

REGISTERED NURSE & PRACTICAL NURSE LICENSEES FY 03-04 TO 10-11 COMPARATIVE SUMMARY



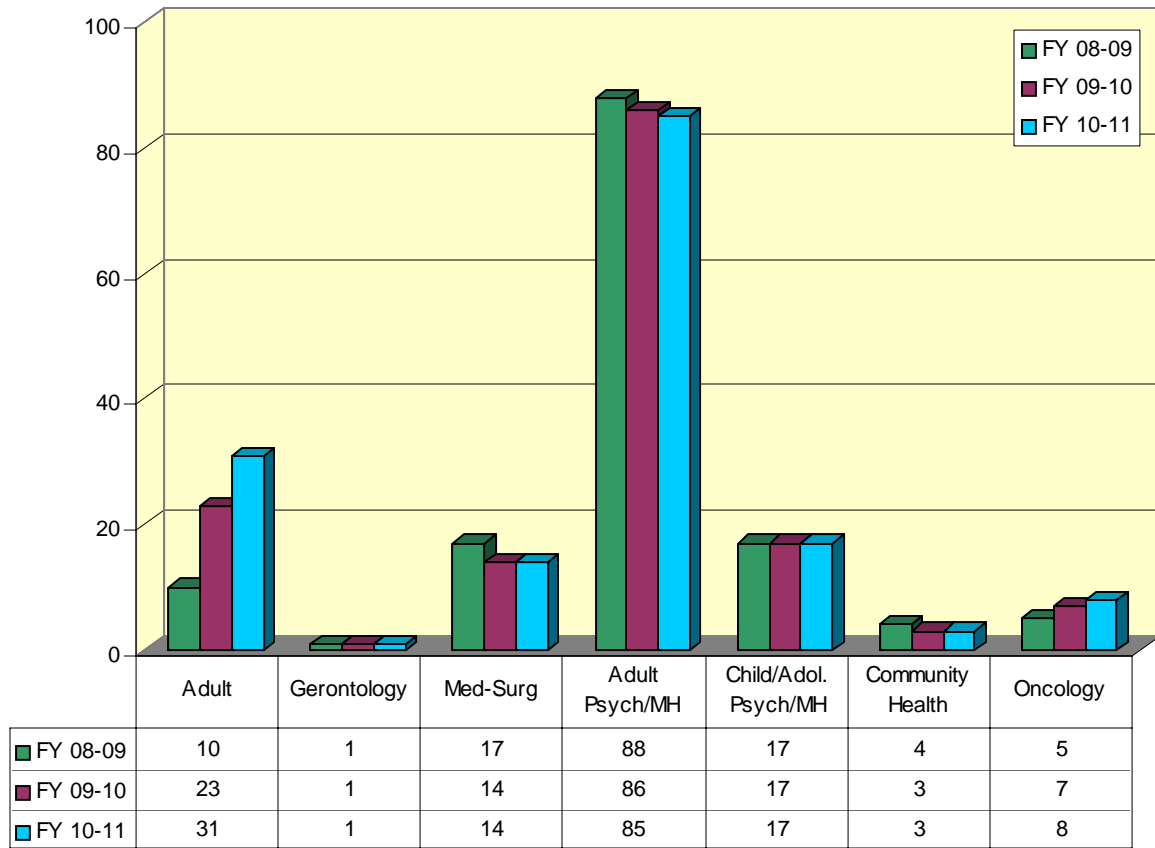
ADVANCED PRACTICE REGISTERED NURSES: FY 03-04 TO 10-11 COMPARATIVE SUMMARY BY DESIGNATION



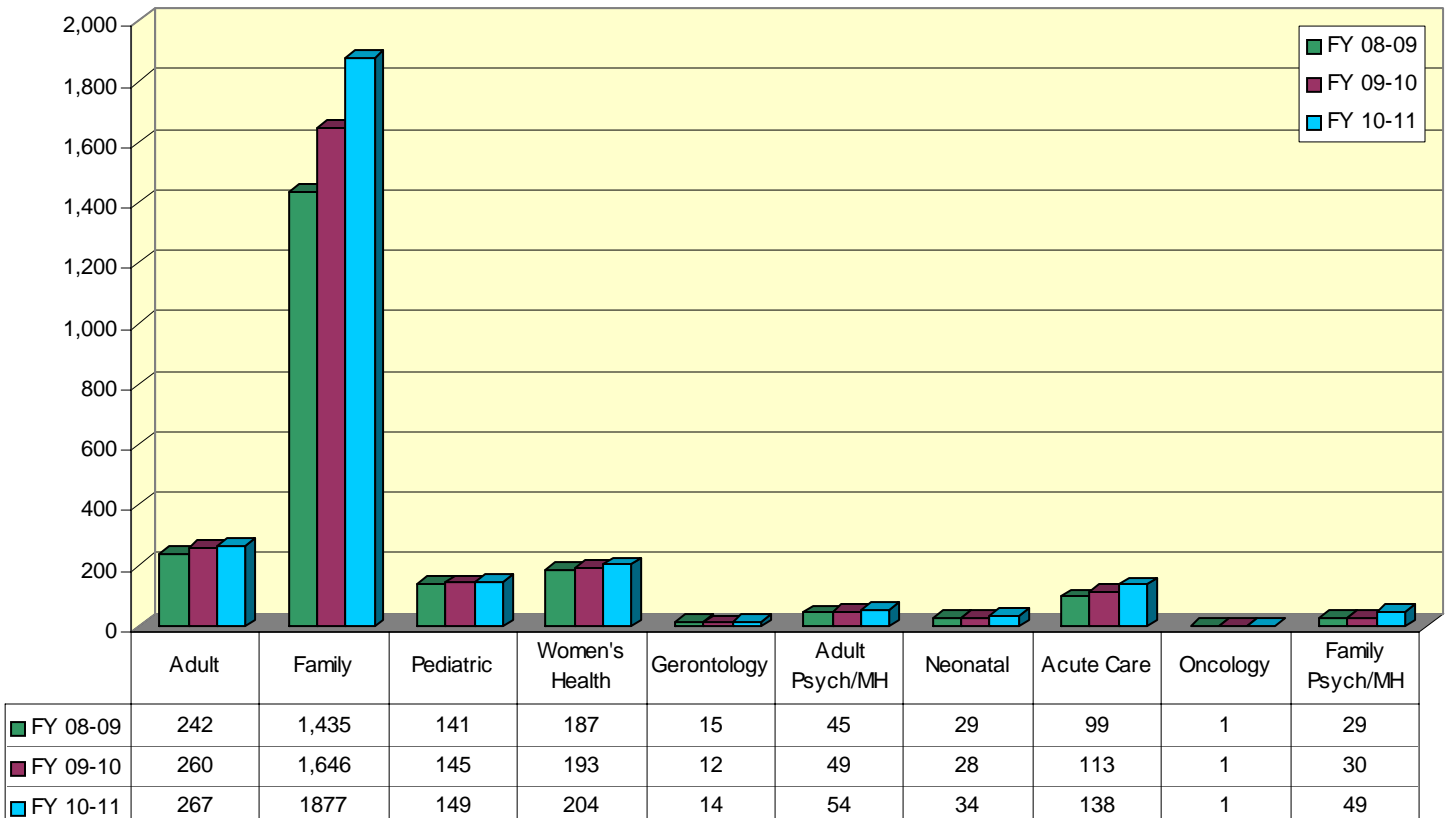
	FY 03-04	FY 04-05	FY 05-06	FY 06-07	FY 07-08	FY 08-09	FY 09-10	FY 10-11
Practitioner	1,471	1,548	1,748	1,863	2,039	2,223	2,496	2,789
Anesthetist	976	949	1,072	1,055	1,134	1,144	1,167	1,145
Clinical Specialist	142	131	146	142	147	146	158	169
Nurse-Midwife	107	96	104	99	95	100	103	99

LICENSURE & REGISTRATION STATISTICS (CONTINUED)

CLINICAL NURSE SPECIALISTS FY 08-09 TO 10-11 COMPARATIVE SUMMARY

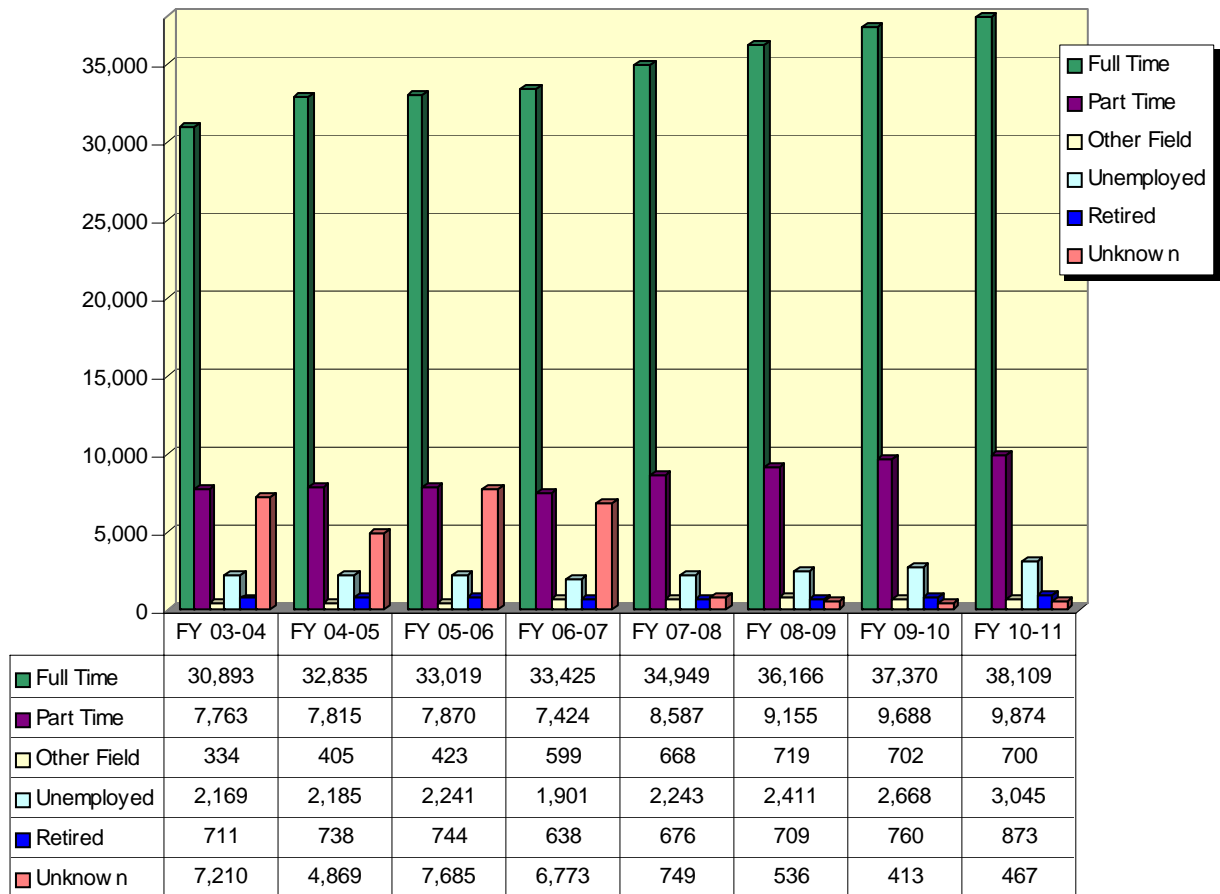


NURSE PRACTITIONERS FY 08-09 TO 10-11 COMPARATIVE SUMMARY

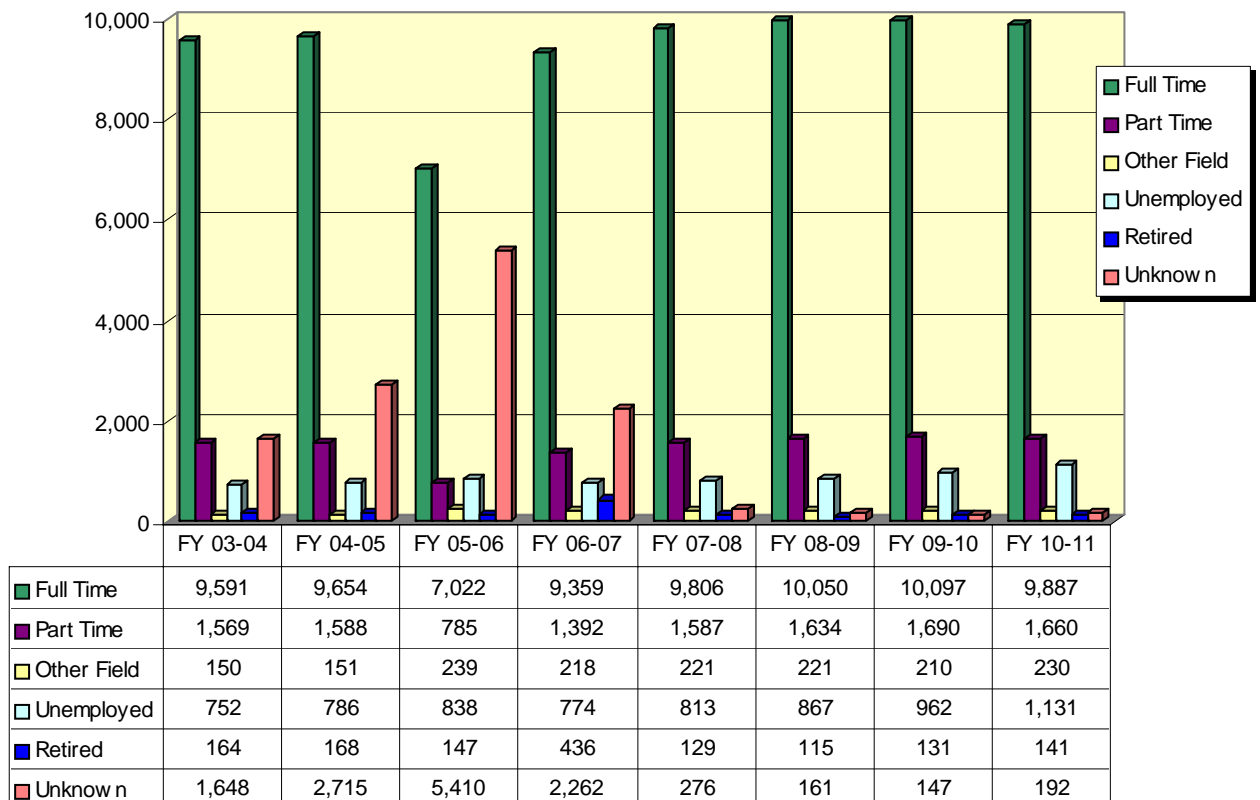


LICENSURE & REGISTRATION STATISTICS (CONTINUED)

SUMMARY OF REGISTERED NURSES BY EMPLOYMENT STATUS: FY 03-04 TO 10-11

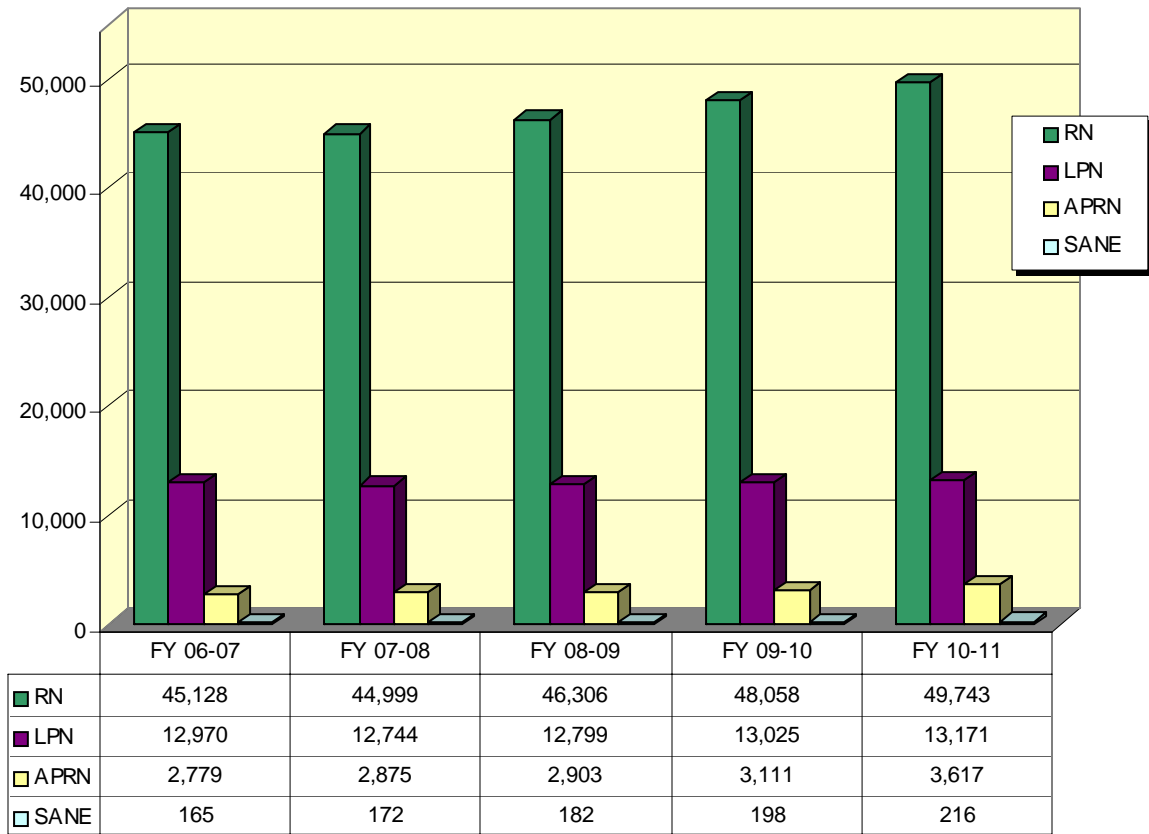


SUMMARY OF PRACTICAL NURSES BY EMPLOYMENT STATUS: FY 03-04 TO 10-11



LICENSURE & REGISTRATION STATISTICS (CONTINUED)

SUMMARY OF LICENSURE RENEWALS: FY 06-07 TO 10-11



SUMMARY OF POST-RENEWAL LAPSE RATES (PERCENTAGE): FY 06-07 TO 10-11

