



Kentucky Board of Nursing

Programs of Nursing Update

Summer 2009

Questions? Contact: Patty Spurr, Education Consultant @ 502-429-3333; Patricia.Spurr@ky.gov

KBN Board Meeting- August 2009

Dear Educators,

I'm pleased to invite you and your students to KBN's second off-site Board meeting to be held from 9:00-4:30 on August 26 at Blue Lick State Park in Mt. Olivet, KY (between Lexington and Maysville).

The purpose of this venue change is to provide an opportunity for practicing nurses, students and educators not in the vicinity of Louisville to attend a Board meeting and have an opportunity to meet and interact with Board members and KBN staff.

We will follow the format that proved successful in our last off-site meeting held in Western KY: the Board President will provide an overview of the KBN's purpose and function. Each KBN member will provide a brief introduction. The Board will conduct its regular business and reports, any votes, or other business will be augmented by Committee Chairs and Board staff providing explanations and overviews of the purpose of the Committee, how votes are implemented, regulations, data use, etc. The meeting will conclude with an interactive session between Board members and students/visitors.

Additional information will be forthcoming and although we anticipate being able to accommodate any number that might attend, we do ask that you register and provide the number of students who will attend so that we have a sufficient number of handouts prepared.

I know it is unlikely that your workload will be lighter but I do hope each of you will have a great summer. Please phone or e-mail Diane Thomas (502-429-3310) Diane.thomas@ky.gov or me if you have questions.

Best Regards,

Charlotte F. Beason, Ed.D., RN
Executive Director

Committee and Board Meeting Dates for 2009-2010

<u>Education Committee Date:</u>	<u>Materials for Educ. Committee Meeting Due No Later Than*</u>	<u>Board Meeting Date:</u>
September 17, 2009	August 17, 2009	October 15-16, 2009
November 5, 2009	October 5, 2009	December 10, 2009
January 14, 2010	December 14, 2009	February 18, 2010
March 18, 2010	February 18, 2010	April 15-16, 2010
May 13, 2010	April 13, 2010	June 17-18, 2010
September 16, 2010	August 16, 2010	October 14-15, 2010
November 18, 2010	October 18, 2010	December 9, 2010

- If you should have business that you would like to come before the Education Committee, all materials need to be submitted by this date. Please submit electronically only.

Students are always welcome. Just e-mail Lila at LilaA.Hicks@ky.gov to let us know how many to expect so that we can have accommodations ready.

NCSBN - Free Videos via You Tube

Isn't the internet wonderful? The NCSBN has just released links to some of the information that they have produced.

POST ENTRY COMPETENCY STUDY: This presentation is available to the public through the following web link:
<http://vimeo.com/4095456>

THE RETIRED PROFESSIONAL CHALLENGES VIDEO: These videos are available via You tube. This series includes:

- Breaking the Habit: When your colleague is chemically dependent
- Crossing the line: When professional boundaries are violated
- Delegating Effectively: Working Through and with Assistive Personnel

<http://www.youtube.com/profile?user=NCSBNInteract&view=videos>

Educator Orientation Sessions for 2009-2010 Academic Year

For the past several years, we have been conducting educator orientations here at the Board office. The sessions are open to anyone from a program who wishes to attend to learn more about Nursing Education and Regulation in Kentucky. All sessions are held at the Board Office. The dates for the new academic year include:

- October 9, 2009
- November 13, 2009
- February 12, 2010
- April 2, 2010

The program lasts from 9 a.m. until 2 p.m. To cover some of the costs, we must charge a \$25 non-refundable fee for the session. This \$25 will include: light breakfast, snacks, lunch, and materials. The fee should be received prior to attendance to secure your place at the session. Registration is limited to 20 individuals per session. Continuing education hours are awarded (6.0 CH). Reserve your spot early. This can be done by e-mailing Lila Hicks @ LilaA.Hicks@ky.gov or calling her at 502-429-3300, ext. 299

NCSBN Publishes Three New Research Briefs

The National Council of State Boards of Nursing (NCSBN) sets an ambitious research agenda designed to advance the science of nursing regulation. NCSBN recently added to its body of research with the publication of three new briefs: *2008 Knowledge of Newly Licensed Registered Nurses Survey*, *2008 RN Practice Analysis: Linking the NCLEX-RN Examination to Practice*; and *2007 Nurse Licensee Volume and NCLEX Examination Statistics*. NCSBN offers 37 volumes of research that include practice analyses and national surveys of the profession, covering topics such as nursing education and professional issues. Previously only available for purchase through NCSBN, these research briefs are now **downloadable free of charge** by visiting www.ncsbn.org.

The *2008 Knowledge of Newly Licensed Registered Nurses*

Survey (https://www.ncsbn.org/WEB_08_Newly_Licensed_Nurses_Vol37_small.pdf) identifies the knowledge needed by newly licensed RNs. The results of this study (i.e., the important knowledge statements) will be used to inform item development.

The *2008 RN Practice Analysis: Linking the NCLEX-RN Examination to Practice*

(https://www.ncsbn.org/08_Linking_the_NCLEX_to_Practice_Vol36.pdf) is a periodic performance of practice analyses (i.e., job analysis) studies, which assists NCSBN in evaluating the validity of the test plan that guides content distribution of the licensure examination.

Additionally, the *2007 Nurse Licensee Volume and NCLEX Examination Statistics*

(https://www.ncsbn.org/WEB_08_2007LicExamRB_Vol35_CS3.pdf) is an annual publication that provides national and state summary data of Member Boards' licensure activities, as well as data on candidate performance on the NCLEX-RN and NCLEX-PN examinations.

"Our mission at NCSBN is to promote excellence in nursing regulation for public protection. One way we accomplish this is by conducting research and making our findings readily available to NCSBN's member boards, NCLEX candidates, nursing educators, nursing administrators and other regulatory professionals," said Kathy Apple, MS, RN, CAE, NCSBN CEO. "NCSBN prides itself in providing objective analysis and effective solutions that address the challenges facing the nursing regulators."

The National Council of State Boards of Nursing, Inc. (NCSBN) is a not-for-profit organization whose membership comprises the boards of nursing in the 50 states, the District of Columbia and four U.S. territories.

Essential Library Resources

<http://essentialnursing.medinfonow.com/>

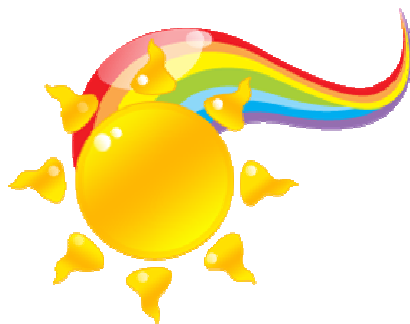
Doody Enterprises, Inc. has announced the release of the **2009 Edition of the Essential Nursing Bookshelf** web site, THE authoritative guide to the must-have titles in Nursing. Titles are selected once a year by content experts and medical librarians. The link is above.

2009 NCLEX Candidate Bulletin

As the upcoming peak testing season approaches, NCSBN would like to remind you of the importance of the 2009 NCLEX Candidate Bulletin and online tutorial for NCLEX examination candidates. The purpose of the candidate bulletin is to provide specific information to nursing students about the process for taking the NCLEX exam. The bulletin includes information about registration, scheduling, identification requirements, candidate rules, the NCLEX test plans and education program codes. In addition, NCSBN provides a sample online tutorial which gives students the opportunity to understand and use the functionality of all the item formats. For more information, please visit <https://www.ncsbn.org/1213.htm>.

Kentucky Administrative Regulations Pertinent to Education

Two additional regulations have completed the legislative review process and are now in effect: 201 KAR 20:270 (Programs of Nursing Site Visits) and 201 KAR 20:290 (Standards for prelicensure registered nurse and practical nurse secondary or distance learning sites) have gone through administrative procedures and became effective June 11, 2009. 201 KAR 20:360 (Evaluation of prelicensure registered nurse and practical nurse programs) will become effective on July 31, 2009. There is only one remaining regulation to progress through the process, 201 KAR 20:260 (Organization and administration standards for prelicensure programs of nursing.) which should become effective on August 12. A complete set of regulations will be prepared and sent to you as they are available.



Enjoy these last
days of summer!